

Project: \_\_\_\_\_

Fixture Type: \_\_\_\_\_

Location: \_\_\_\_\_

Contact/Phone: \_\_\_\_\_

**PRODUCT DESCRIPTION**

5 inch LED Dedicated IC Housing series. This LED housing series is designed for new construction installations and suitable for use in ceiling where the housing can be direct contact with insulation. Air tight construction reduces energy costs by reducing the amount of air leakages through the ceiling.

**PRODUCT SPECIFICATIONS**

**Plaster Frame**

- Galvanized steel construction. The housing can be removed from plaster frame to provide access to the junction box.

**Junction Box**

- Listed for through branch circuit wiring.
- Contains seven 7/8" knockouts and four Romex pryouts with strain relief.

**Bar Hanger**

- Pre-installed Real nail easily installs in regular lumber, engineered lumber.
- Bar Hangers are adjustable from 13-5/8" to 25" and can be repositioned 90 degree on plaster frame.

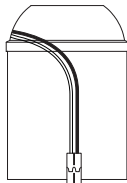
**Listings**

- cULus Listed for Damp Location
- cULus Listed for Feed Through
- Certified under ASTM-E283 for Air tight construction

**CONNECTOR**

Model NO. LED500ICA

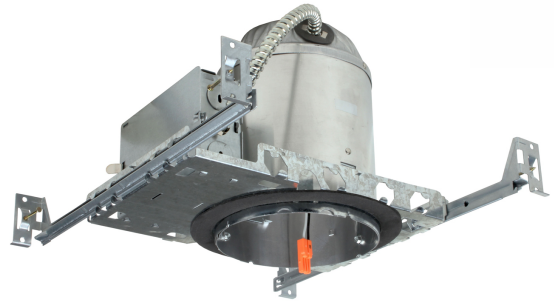
Triac Dimming version



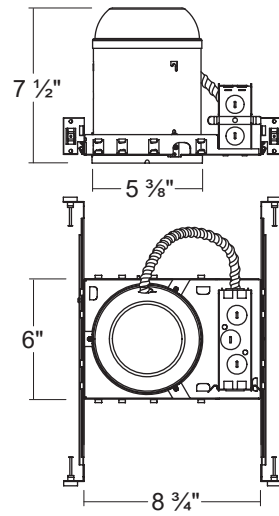
Ideal connector

**LS-5INCH-IC-AT**

5" IC LED Dedicated Can New construction Housing



**DIMENSIONS**



**COMPATIBLE TRIMS**

Dimming	Model NO.	Description
	LSL-560	5&6" LED Retrofit / Smooth
	LSL-563	5&6" LED Retrofit / Baffle
<b>Triac Dimming</b>		

**ORDERING INFORMATION**

Model NO.	Dimming	Description
LS-5INCH-IC-AT	Triac Dimming	5" IC Dedicated Can New construction Housing