

Project:

Fixture Type:

Location:

Contact/Phone:

PRODUCT DESCRIPTION

3" LED dedicated IC housing, LS-3-IC-AT is designed for new construction installations and suitable for use in ceiling where the housing can be direct contact with insulation. Air tight construction reduces energy costs by reducing the amount of air leakages through the ceiling.

PRODUCT SPECIFICATIONS

Plaster Frame

- Galvanized steel construction. The housing can be removed from plaster frame to provide access to the junction box.

Junction Box

- Listed for through branch circuit wiring.
- Contains seven 7/8" knockouts and four Romex pryouts with strain relief.

Bar Hanger

- Pre-installed Real nail easily installs in regular lumber, engineered lumber.
- Bar Hangers are adjustable from 13-5/8" to 25" and can be repositioned 90 degree on plaster frame.

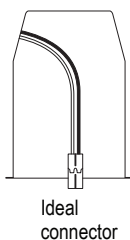
Listings

- cULus Listed for Damp Location
- cULus Listed for Feed Through
- Certified under ASTM-E283 for Air tight construction

CONNECTOR

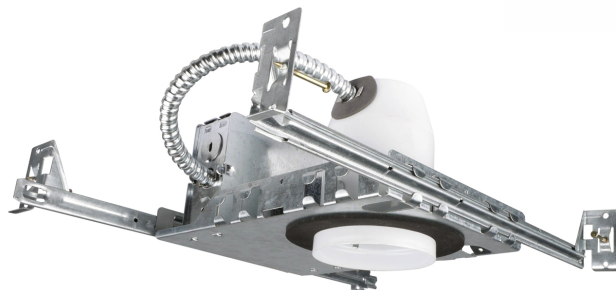
Model NO. LS-3-IC-AT

Triac Dimming version

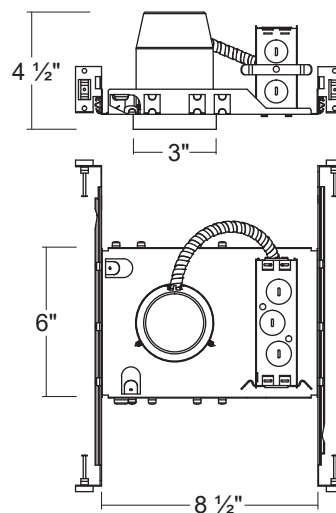


LS-3-IC-AT

3" IC LED Dedicated Can New construction Housing



DIMENSIONS



COMPATIBLE TRIMS

Dimming	Model NO.	Description
Triac Dimming	LSL-3"570 CCT	3" LED Retrofit / Smooth
	LSL-3"573 CCT	3" LED Retrofit / Baffle
	LSL-3"3574 CCT	3" LED Retrofit / Square Baffle
	LSL-3"575 CCT	3" LED Retrofit / Square Smooth
	LSL-3"311 CCT	3" LED Retrofit / Gimbal

ORDERING INFORMATION

Model NO.	Dimming	Description
LS-3-IC-AT	Triac Dimming	3" IC Dedicated Can New construction Housing