

Project: _____

Fixture Type: _____

Location: _____

Contact/Phone: _____

2" LED RECESSED DOWN LIGHT

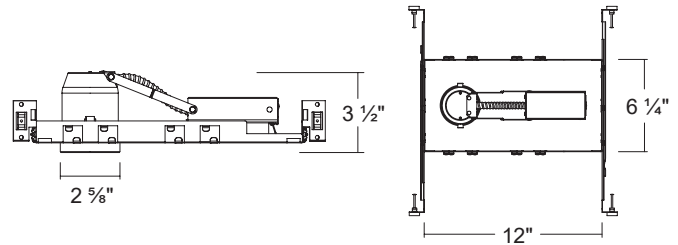


LS-2-IC-AT*2

2" IC AT LED New Construction Housing / Driver



DIMENSIONS



DESCRIPTION

- 2" LED Recessed Housings suitable for New Construction and Remodel in residential and commercial applications.
- Type IC / Air-Tight
- Galvanized steel plaster frame with J-Box and captive hanger bars.
- LED Driver is mounted directly on housing.
- Compatible with LS26- 2" LED dedicated trims only.
- Accessible to LED Driver from the opening of housing.
- Compatible with most of the standard incandescent or magnetic / electronic low voltage dimmers.

LED LIGHT ENGINE

- CRI ≥80 or ≥90
- Available in 2700K, 3000K, 4000K, and 5000K
- 120V (Triac dimming) or 120/277V (0-10V dimming).
- Long life LED Chips guaranteed up to 50,000 hours.

LISTINGS

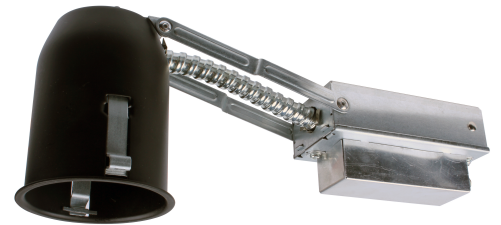
- cULus listed
- Energy star qualified
- Wet locations listed (Not suitable for coastal/salt water area)
- Damp locations
- RoHS compliances
- Tested in accordance with IESNA LM79 & LM80

List of Triac Dimmer Switch		
Mfr	Model #	Dimming Rate
COOPER	DLC03P	10 - 100%
Leviton	1A1505 / 1C1605	10 - 100%
Leviton	6631 / 6633	10 - 100%
Lutron	CT-603PG / CT-600PR	10 - 100%
Lutron	DV-600PR / DV603PG	10 - 100%
Lutron	DVW-603PGH / DVCL-153P	10 - 100%
Lutron	MACL-153M / TGCL-153P	10 - 100%
Lutron	S-600PR / S-2-LH	10 - 100%

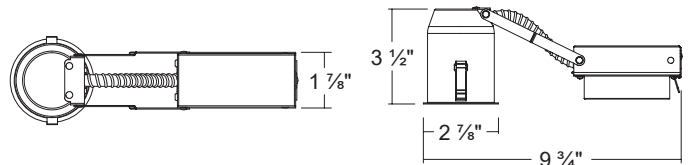
List of 0-10V Dimmer Switch		
Mfr	Model #	Dimming Rate
Lutron	NFTV	0 - 100%
Lutron	NTSTV-DV	0 - 100%
Legrand	CD4FBLW	0 - 100%
Leviton	1P710-DL	0 - 100%

LS-2R-IC-AT

2" IC AT LED Remodel Housing / Driver



DIMENSIONS



PRODUCT CODE

Model NO.	Description
LS-2-IC-AT*2	2" IC AT LED New Construction Housing / Driver / 120V
LS-2R-IC-AT	2" IC AT LED Remodel Housing / Driver / 120V
LS-2"200	2" LED Trim / Smooth
LS-2"203	2" LED Trim / Baffle
LS-2"207	2" LED Trim / Adjustable Gimbal WHITE/BLACK
LS-2"240	2" LED Trim / Square Smooth
LS"-243	2" LED Trim / Square Baffle
LS-2"247	2" LED Trim / Adjustable Square Gimbal WHITE/BLACK