



LS-PR12-21W-5CCT

12" LED Flush Mount Surface Light

LUMENS: 1800lm

COLOR TEMPERATURE: 27K/30K/35K/40K/50K

APERTURE: Round

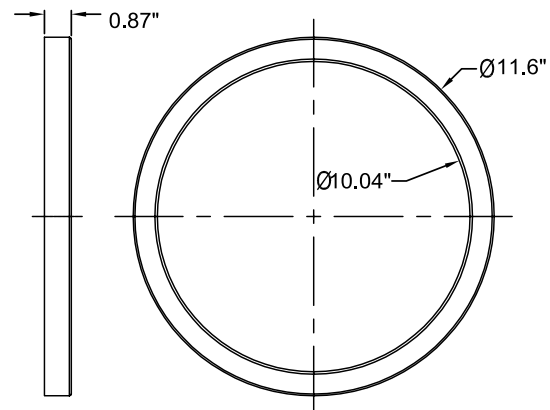
Description The 12" flush mount surface light is a versatile lighting solution perfect for various applications. Operating at just 21W, it provides a bright 1800-lumen output, making it an energy-efficient replacement for traditional incandescent bulbs. Featuring 5CCT selectable options, this light allows you to customize the ambiance to your preference, from warm to cool tones. Its flush mount design ensures a sleek, low-profile appearance, and its suitability for wet locations makes it ideal for bathrooms, showers, and outdoor covered areas, providing reliable and stylish illumination wherever needed.

FEATURES

- 1800lm / 21W
- Selectable 2700K, 3000K, 3500K, 4000K or 5000K
- High CRI (90+)
- 120V; Triac Dimming
- Dimming down to 10% with most dimmers
- Flush mounted
- 5-year limited warranty
- cULus Listed for Wet locations



PRODUCT IMAGES & DIMENSIONS



SPECIFICATIONS

PART NUMBER	SIZE	LUMEN/WATTAGE	SELECTABLE 5CCT	VOLTAGE	DIMMING	CRI	FINISH	LISTING
LS-PR12-21W-5CCT	12"	1800lm/21W	27K/30K/35K/40K/50K	120V	TRIAC	90	White	cULus



LS-PR12-21W-5CCT

12" LED Flush Mount Surface Light

PRODUCT PHOTOMETRIC

Luminaire Property

Luminaire Manufacturer:

Lamp Catalog: LED

Number of Lamps: 1

Luminous Length (mm): 0 mm

Luminous Height (mm): 0 mm

Current: 0.179 A

Power Factor: 0.935

Lamp Description: LED

Lumens per Lamp: 1939.2 lm

Luminous Width (mm): 0 mm

Voltage: 120.1 V

Power: 20.16 W

Photometric Results

CIE Class: Direct

Measurement Flux: 1939.2 lm

Downward Ratio: 98.97%

Field Angle: H163.3 V163.1

Luminaire Efficacy Rating (LER): 96

Max. Intensity: 579.22 cd

Total Rated Lamp Lumens: 1939.2 lm

Efficiency: 100.00%

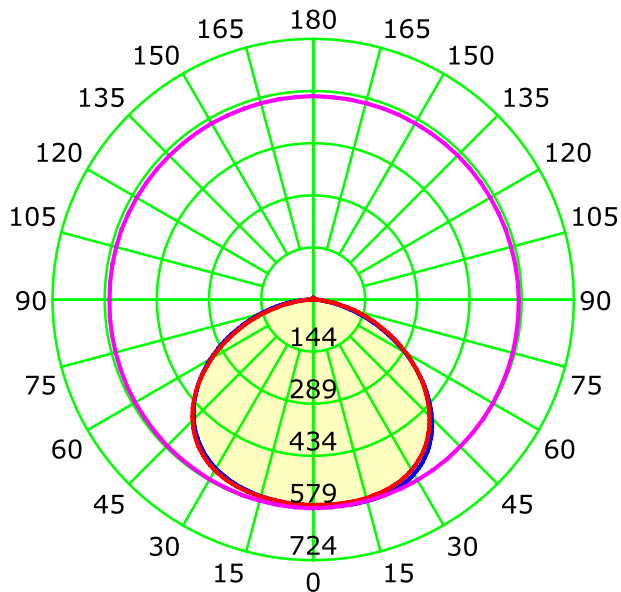
Upward Ratio: 1.03%

Beam Angle: H124.1 V124.3

Central Intensity: 573.69 cd

Pos of Max. Intensity: H0 V15

Luminous Intensity Distribution Curve



Average Diffuse Angle(50%): 124.2° Unit: cd

— C0-C180 — C90-C270 — G15