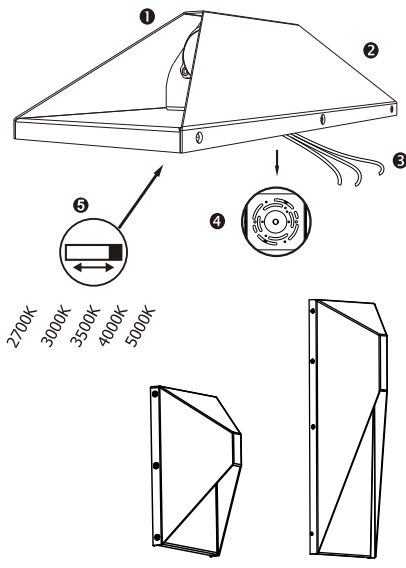


FIXTURE INSTALLATION

Important: Read all instructions in order to ensure safety and proper installation.
 DO NOT operate this product under any conditions other than those for which it is specified. Failure to observe these precautions can lead to electrical shock, product failure, or other problems.



PARTS LIST

- 1 LED Chip
- 2 LED Fixture
- 3 Wire
- 4 Mounting Plate
- 5 CCT adjustable switch

Specification	Power	Voltage	Length	Width	Height	Beam Angle
8-Inch Downward Wall Light	12 W	AC100-277V	203mm	126mm	86mm	65°
14-Inch Downward Wall Light	15 W	AC100-277V	356mm	126mm	86mm	65°
14-Inch Up Down Wall Light	22 W /24W	AC100-277V	356mm	126mm	86mm	65°

MAINTENANCE

READ ALL INSTRUCTIONS IN ORDER TO ENSURE SAFETY AND PROPER INSTALLATION.

- 1. DO NOT operate this product under ANY conditions other than those specified for it. Failure to observe these precautions can lead to electrical shock, product failure or other problems.
- 2. TURN OFF THE POWER at the electrical panel before installation or maintenance.
- 3. DO NOT modify this fixture. ANY modifications may render the product unsafe and void the warranty.
- 4. This product is rated for outdoor use.

Limited Warranty

The warranty applies to the product from the original date of purchase for three(3)years against manufacturing defects. The owner must provide a copy of the original proof of purchase. The manufacturer's obligation under this warranty is limited to repairing or replacing the component. It is not related in any way to the cost of the connection, the installation of the replacement parts or cost of transport.

Package Content

- Wall Light x 1
- Wire Connectors x 3
- Screws x 4
- Mounting plate x 1

INSTALLATION GUIDE

⚠ WARNING

**Turn power OFF from electrical panel before installation or maintenance.
Do not unscrew the screws! Read installation instructions.**

1. Take out the mounting plate from the fixture and fix it to the embedded electrical box with screws. Pull black, white, and ground wires out of electrical outlet box.
2. Twist together white fixture wire with white outlet wire. Next, twist together black fixture wire with black outlet wire. Connect fixture ground wire and outlet ground wire. Use wire connectors to secure connections.
3. Install the LED fixtures on the mounting plate according to the direction of the label on the back of the fixture. Use the fixture screws to fix both sides.
4. With silicone caulking compound, caulk completely around where the mounting bracket meets the wall surface.

CAUTION: Be sure to caulk completely where the mounting bracket meets the wall surface to prevent water from seeping into mounting bracket.

