

INSTALLATION INSTRUCTIONS

Installation Guide

How to install

Important safety information - read all instructions before installation.

Recessed Housings Retrofit

Step 1: Before installation, select your preferred CCT by moving the switch to either 2700K, 3000K, 3500K, 4000K or 5000K.

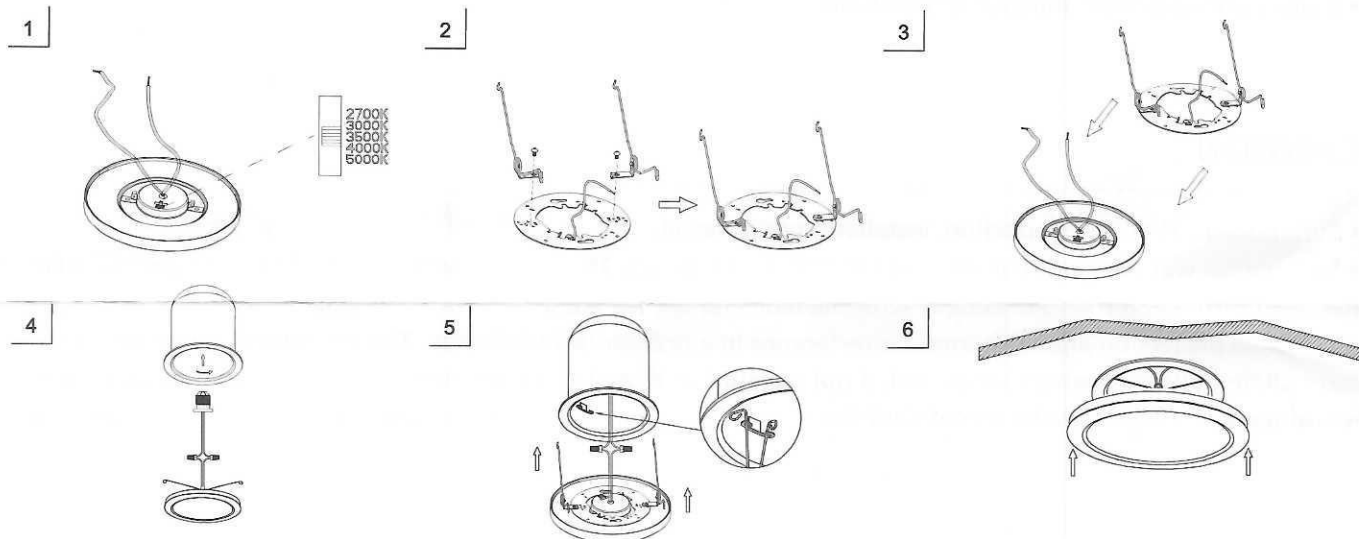
Step 2: Attach the two torsion springs onto the mounting plate. To install into a 5 or 6 in. housing.

Step 3: Install the mounting plate onto the back of the fixture.

Step 4: Connect the wire of E26 adapter to the wires on the LED fixtures. Thread the E26 adapter into the socket in the recessed housing.

Step 5: Tuck all wires into the recessed housing and carefully push the trim into the recessed housing.

Step 6: Push the LED fixture into recessed housing until the trim ring is flush with the ceiling.



Junction Box Installation

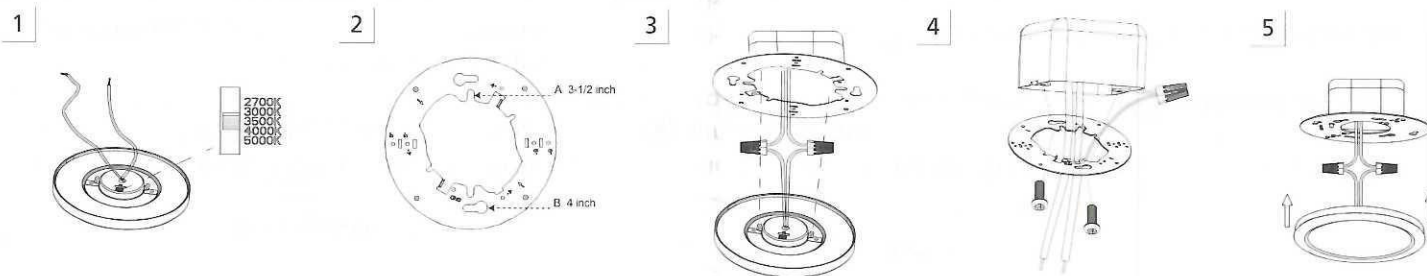
Step 1: Before installation, select your preferred CCT by moving the switch to either 2700K, 3000K, 3500K, 4000K or 5000K.

Step 2: Choose the mounting plate holes compatible with your junction box.

Step 3: Using the included wire nuts, connect the black wire to the hot supply wire, connect the white wire to the supply neutral wire, connect the green wire to the ground wire.

Step 4: Align the appropriate holes in the mounting plate with the holes in the junction box. Using the screws, attach the mounting plate to the junction box. Tighten the screws until the mounting plate is flush with the ceiling.

Step 5: Push the LED fixture into the mounting plate and make sure the LED fixture is fully secured before releasing.



INSTALLATION INSTRUCTIONS

WARNING

- Risk of electrical shock. Disconnect power at fuse or circuit breaker before installing or servicing.
- To prevent early lamp failure, lamp should only be installed in operating environments ranging between -4°F and +113°F.
- To prevent overheating do not install in totally enclosed recessed fixtures.
- No user serviceable parts inside. To avoid electrical shock do not disassemble product.
- This product is not intended for use in emergency light fixtures or exit signs.
- Covered ceiling mount only.
- Installation should be performed only by a qualified electrician.
- 5 years warranty from the date of purchase.

CAUTION

- Turn power off before inspection, installation or removal.
- Suitable for wet locations. Use only on 120 VAC, 60Hz circuits. This device complies with Part 15 of the FCC rules and has been tested and found to comply with the limits for a Class B digital device. These limits are designed to provide reasonable protection against harmful interference in a residential installation. This equipment generates, uses, and can radiate radio frequency energy and, if not installed and used in accordance with the instructions, may cause harmful interference to radio communications.

ACCESSORIES



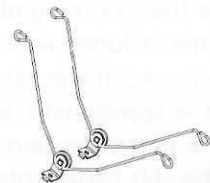
Wire Nut X3PCS



For Mounting Plate



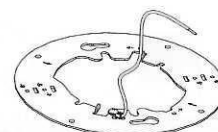
For Torsion springs



Torsion springs



E26 Adapter



Mounting Plate