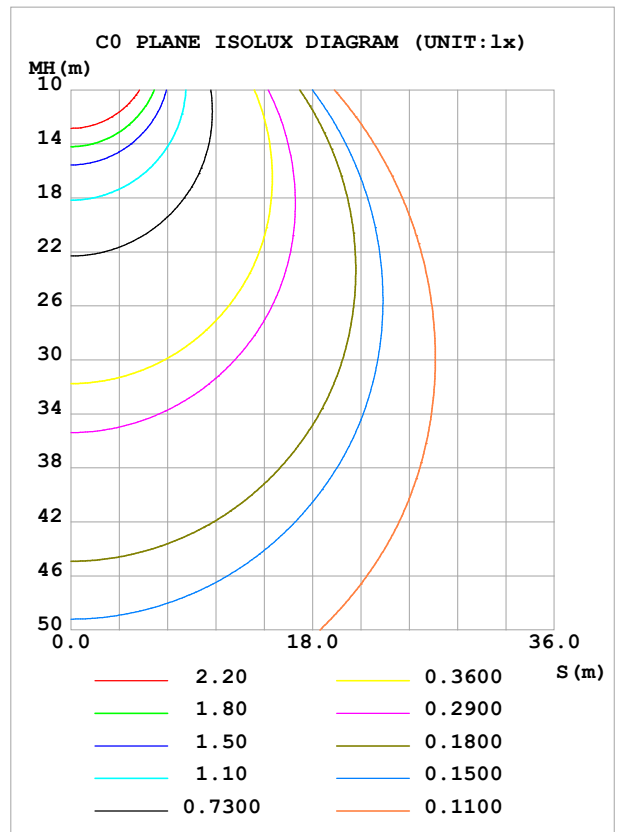
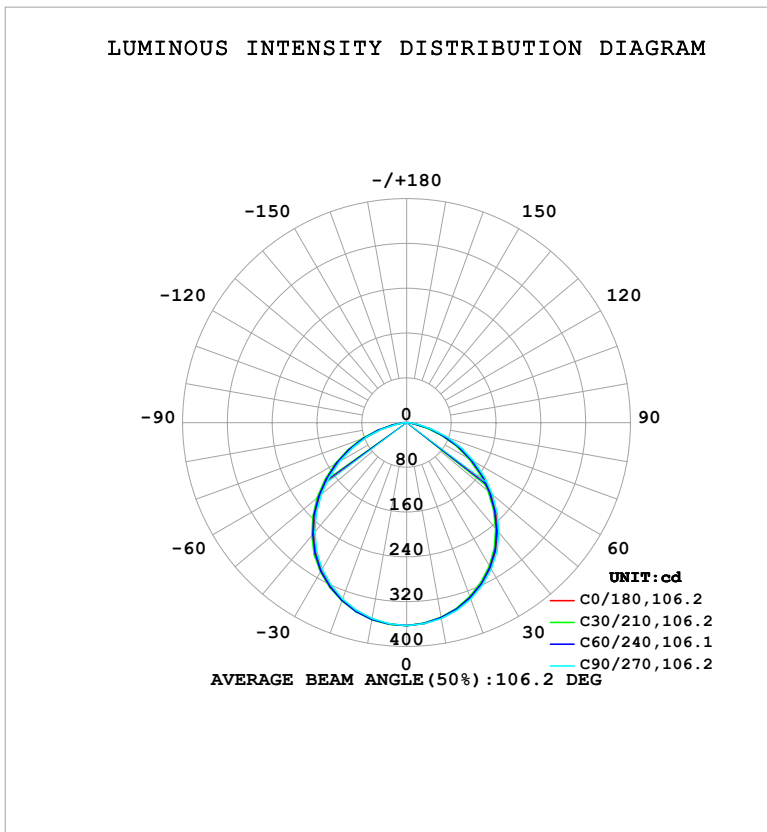


LUMINAIRE PHOTOMETRIC TEST REPORT

Test:U:121.03V I:0.0970A P:11.626W PF:0.9903 Freq:60.00Hz Lamp Flux:948.81x1 lm		
NAME: LS-SMC-7-C32-12W-5CCT-WH	TYPE:	WEIGHT:
SPEC.:	DIM.:	SERIAL No.: 1#30K
MFR.: YOURZOR	SUR.: 0.154	Shielding Angle:

DATA OF LAMP		PHOTOMETRIC DATA			
MSBEMC-7-C32-12W-5CCT-WH-30K		Imax (cd)	362.3	S/MH (C0/180)	1.25
NOMINAL POWER (W)	12	LOR (%)	100.0	S/MH (C90/270)	1.24
RATED VOLTAGE (V)	120	TOTAL FLUX (lm)	948.81	η UP, DN (C0-180)	0.0,49.9
NOMINAL FLUX (lm)	948.81	CIE CLASS	DIRECT	η UP, DN (C180-360)	0.0,50.1
LAMPS INSIDE	1	η up (%)	0.0	CIBSE SHR NOM	1.25
TEST VOLTAGE (V)	120	η down (%)	100.0	CIBSE SHR MAX	1.35



C Range: 0 - 360DEG
 C Interval: 30.0DEG
 Test Speed: HIGH
 Temperature:25.3°C
 Operators:DAMIN
 Test Date:2026-02-03

γ Range: 0 - 90DEG
 γ Interval: 5.0DEG
 Test System:EVERFINE GO-2000B_V1 SYSTEM V2.00.488
 Humidity:65.0%
 Test Distance:6.144m [K=1.0000]
 Remarks:

ZONAL FLUX DIAGRAM

ZONAL FLUX DIAGRAM:

γ	C0	C45	C90	C135	C180	C225	C270	C315	γ	Φ zone	Φ total	%lum, lamp
10	354.9	353.4	355.4	357.1	355.8	357.2	355.4	353.9	0- 10	34.26	34.26	3.61,3.61
20	334.0	331.2	335.3	338.3	335.9	338.5	335.1	332.0	10- 20	97.85	132.1	13.9,13.9
30	300.8	297.0	302.7	307.2	303.6	307.3	302.5	297.9	20- 30	147.5	279.6	29.5,29.5
40	253.8	248.8	256.7	262.6	257.6	262.6	255.5	249.4	30- 40	175.5	455.0	48,48
50	197.6	191.8	200.5	207.5	202.1	207.4	199.1	192.2	40- 50	176.3	631.3	66.5,66.5
60	136.2	130.3	139.6	147.1	141.3	146.5	137.8	130.5	50- 60	151.6	782.9	82.5,82.5
70	74.00	68.35	77.88	84.96	78.76	83.94	76.07	68.52	60- 70	106.3	889.2	93.7,93.7
80	18.75	15.17	22.15	27.78	22.36	26.85	20.53	14.91	70- 80	50.65	939.9	99.1,99.1
90	0.4696	0.5063	0.4730	1.220	0.5483	1.246	0.5469	0.5917	80- 90	8.915	948.8	100,100
100									90-100			
110									100-110			
120									110-120			
130									120-130			
140									130-140			
150									140-150			
160									150-160			
170									160-170			
180									170-180			
DEG	LUMINOUS INTENSITY:cd									UNIT:lm		

Conical surface Flux(90deg): 544.77 lm

%lum = 57.4%

%lamp = 57.4%

Conical surface Flux(130deg): 842.69 lm

%lum = 88.8%

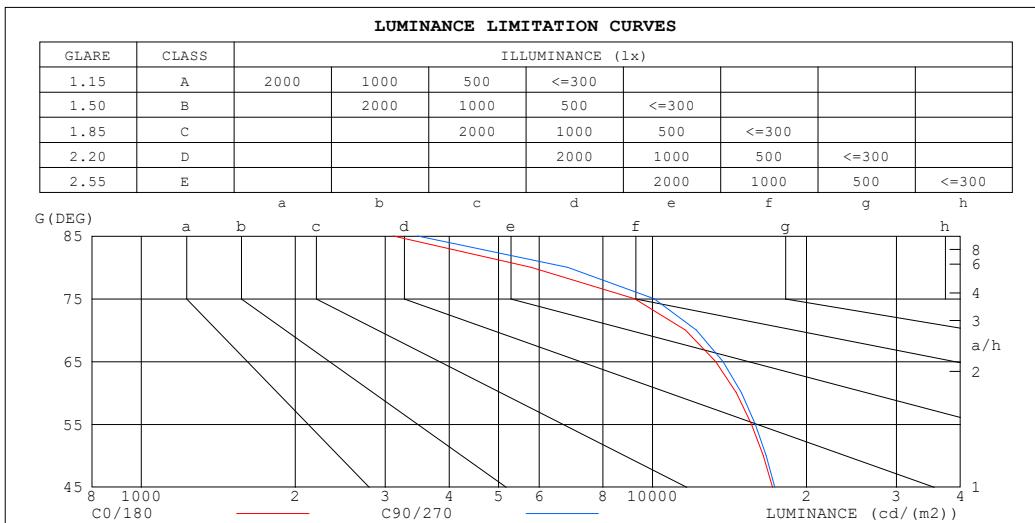
%lamp = 88.8%

C Range: 0 - 360DEG
 C Interval: 30.0DEG
 Test Speed: HIGH
 Temperature:25.3°C
 Operators:DAMIN
 Test Date:2026-02-03

γ Range: 0 - 90DEG
 γ Interval: 5.0DEG
 Test System:EVERFINE GO-2000B_V1 SYSTEM V2.00.488
 Humidity:65.0%
 Test Distance:6.144m [K=1.0000]
 Remarks:

LUMINANCE LIMITATION CURVES

Test:U:121.03V I:0.0970A P:11.626W PF:0.9903 Freq:60.00Hz Lamp Flux:948.81x1 lm		
NAME: LS-SMC-7-C32-12W-5CCT-WH	TYPE:	WEIGHT:
SPEC.:	DIM.:	SERIAL No.: 1#30K
MFR.: YOURZOR	SUR.: 0.154	Shielding Angle:



LUMINANCE cd/(m2)		
G (DEG)	C0/180	C90/270
85	3110	3472
80	5785	6820
75	9224	10066
70	11594	12177
65	13287	13726
60	14595	14928
55	15622	15889
50	16471	16680
45	17163	17342

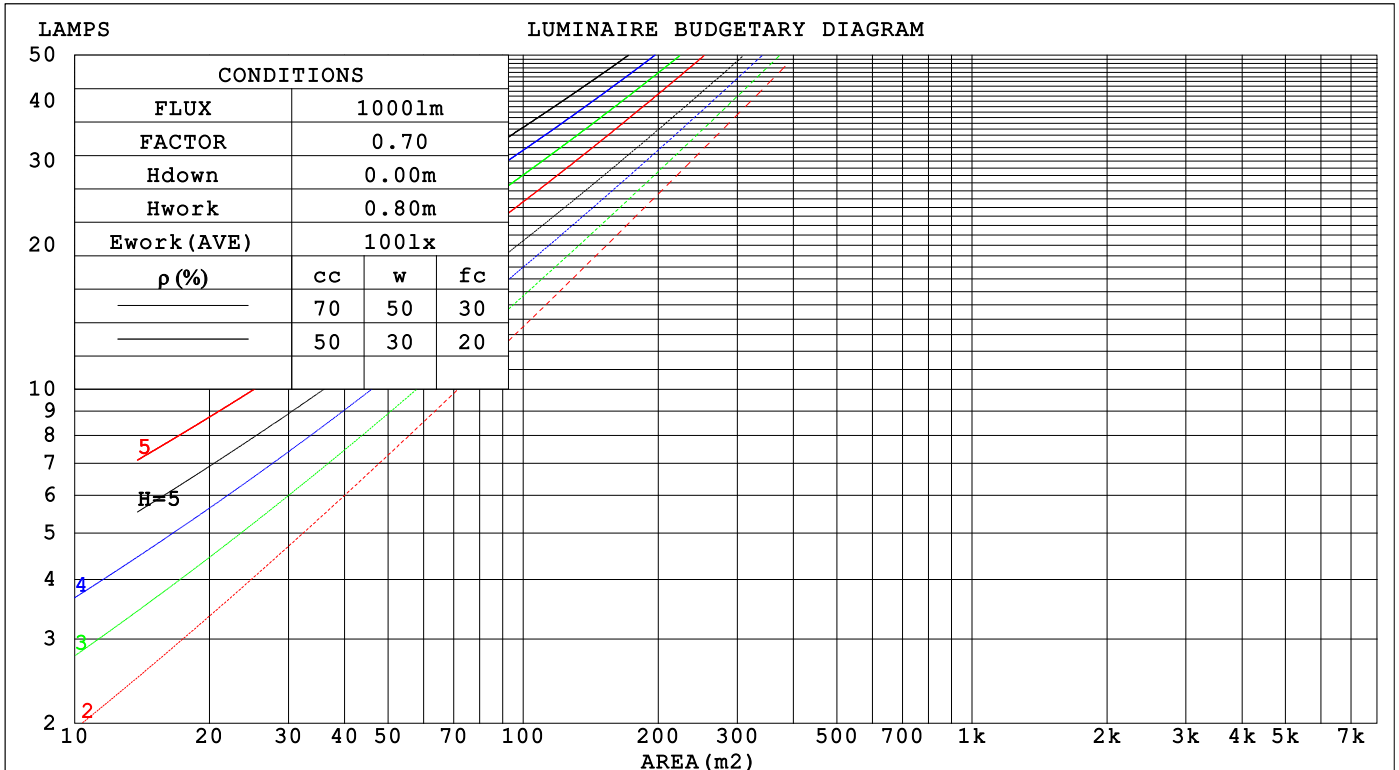
C Range: 0 - 360DEG
 C Interval: 30.0DEG
 Test Speed: HIGH
 Temperature:25.3°C
 Operators:DAMIN
 Test Date:2026-02-03

γ Range: 0 - 90DEG
 γ Interval: 5.0DEG
 Test System:EVERFINE GO-2000B_V1 SYSTEM V2.00.488
 Humidity:65.0%
 Test Distance:6.144m [K=1.0000]
 Remarks:

CU AND LUMINAIRE BUDGETARY ESTIMATE DIAGRAM

Test:U:121.03V I:0.0970A P:11.626W PF:0.9903 Freq:60.00Hz Lamp Flux:948.81x1 lm		
NAME: LS-SMC-7-C32-12W-5CCT-WH	TYPE:	WEIGHT:
SPEC.:	DIM.:	SERIAL No.: 1#30K
MFR.: YOURZOR	SUR.: 0.154	Shielding Angle:

ρcc	80%			70%			50%			30%			10%			0
ρw	50%	30%	10%	50%	30%	10%	50%	30%	10%	50%	30%	10%	50%	30%	10%	0
ρfc	20%			20%			20%			20%			20%			0
RCR	RCR:Room Cavity Ratio															
	Coefficients of Utilization(CU)															
0.0	1.19	1.19	1.19	1.16	1.16	1.16	1.11	1.11	1.11	1.06	1.06	1.06	1.02	1.02	1.02	.00
1.0	1.05	1.01	.97	1.03	.99	.96	.99	.96	.93	.95	.92	.90	.91	.89	.87	.85
2.0	.92	.86	.80	.90	.84	.79	.87	.82	.77	.83	.79	.76	.80	.77	.74	.72
3.0	.81	.73	.67	.80	.72	.66	.77	.70	.65	.74	.69	.64	.71	.67	.63	.61
4.0	.72	.64	.57	.71	.63	.57	.68	.61	.56	.66	.60	.55	.64	.59	.54	.52
5.0	.65	.56	.49	.64	.55	.49	.61	.54	.49	.59	.53	.48	.58	.52	.48	.45
6.0	.58	.50	.43	.57	.49	.43	.56	.48	.43	.54	.47	.42	.52	.46	.42	.40
7.0	.53	.44	.38	.52	.44	.38	.51	.43	.38	.49	.43	.38	.48	.42	.37	.35
8.0	.48	.40	.34	.48	.40	.34	.46	.39	.34	.45	.38	.34	.44	.38	.33	.32
9.0	.44	.36	.31	.44	.36	.31	.43	.36	.31	.42	.35	.30	.41	.35	.30	.28
10.0	.41	.33	.28	.40	.33	.28	.39	.33	.28	.39	.32	.28	.38	.32	.28	.26



C Range: 0 - 360DEG
 C Interval: 30.0DEG
 Test Speed: HIGH
 Temperature:25.3°C
 Operators:DAMIN
 Test Date:2026-02-03

γ Range: 0 - 90DEG
 γ Interval: 5.0DEG
 Test System:EVERFINE GO-2000B_V1 SYSTEM V2.00.488
 Humidity:65.0%
 Test Distance:6.144m [K=1.0000]
 Remarks:

WEC AND CCEC

Test:U:121.03V I:0.0970A P:11.626W PF:0.9903 Freq:60.00Hz Lamp Flux:948.81x1 lm								
NAME: LS-SMC-7-C32-12W-5CCT-WH			TYPE:			WEIGHT:		
SPEC.:			DIM.:			SERIAL No.: 1#30K		
MFR.: YOURZOR			SUR.: 0.154			Shielding Angle:		

ρ_{CC}	80%			70%			50%			30%			10%			0
ρ_w	50%	30%	10%	50%	30%	10%	50%	30%	10%	50%	30%	10%	50%	30%	10%	0
ρ_{fc}	20%			20%			20%			20%			20%			0
RCR	RCR:Room Cavity Ratio						Wall Exitance Coefficients (WEC)									
0.0																
1.0	.288	.164	.052	.281	.160	.051	.267	.153	.049	.255	.147	.047	.244	.142	.046	
2.0	.276	.151	.046	.270	.149	.046	.258	.144	.045	.247	.139	.043	.238	.134	.042	
3.0	.258	.137	.041	.253	.135	.041	.242	.131	.040	.233	.128	.039	.224	.124	.038	
4.0	.240	.125	.037	.235	.123	.036	.226	.120	.036	.218	.117	.035	.210	.114	.035	
5.0	.223	.114	.033	.219	.112	.033	.211	.110	.032	.203	.107	.032	.196	.105	.032	
6.0	.208	.104	.030	.204	.103	.030	.197	.101	.029	.190	.099	.029	.184	.097	.029	
7.0	.194	.096	.027	.191	.095	.027	.184	.093	.027	.178	.091	.027	.173	.090	.026	
8.0	.182	.089	.025	.179	.088	.025	.173	.086	.025	.168	.085	.024	.163	.083	.024	
9.0	.171	.083	.023	.168	.082	.023	.163	.081	.023	.158	.079	.023	.153	.078	.023	
10.0	.161	.077	.021	.158	.077	.021	.154	.075	.021	.149	.074	.021	.145	.073	.021	

ρ_{CC}	80%			70%			50%			30%			10%			0
ρ_w	50%	30%	10%	50%	30%	10%	50%	30%	10%	50%	30%	10%	50%	30%	10%	0
ρ_{fc}	20%			20%			20%			20%			20%			0
RCR	RCR:Room Cavity Ratio						Ceiling Cavity Exitance Coefficients (CCEC)									
0.0	.190	.190	.190	.163	.163	.163	.111	.111	.111	.064	.064	.064	.020	.020	.020	
1.0	.179	.156	.136	.153	.134	.117	.105	.092	.081	.060	.053	.047	.019	.017	.015	
2.0	.170	.132	.100	.146	.114	.086	.100	.079	.060	.058	.046	.035	.018	.015	.012	
3.0	.162	.114	.076	.139	.099	.066	.095	.068	.046	.055	.040	.027	.018	.013	.009	
4.0	.155	.101	.060	.133	.087	.052	.091	.061	.037	.053	.036	.022	.017	.012	.007	
5.0	.147	.090	.048	.126	.078	.042	.087	.055	.030	.050	.032	.018	.016	.010	.006	
6.0	.140	.082	.040	.121	.071	.035	.083	.050	.025	.048	.029	.015	.016	.010	.005	
7.0	.134	.075	.034	.115	.065	.029	.079	.046	.021	.046	.027	.012	.015	.009	.004	
8.0	.127	.069	.029	.110	.060	.025	.076	.042	.018	.044	.025	.011	.014	.008	.004	
9.0	.121	.064	.026	.105	.056	.022	.072	.039	.016	.042	.023	.009	.014	.008	.003	
10.0	.116	.060	.023	.100	.052	.020	.069	.037	.014	.040	.022	.008	.013	.007	.003	

C Range: 0 - 360DEG
 C Interval: 30.0DEG
 Test Speed: HIGH
 Temperature:25.3°C
 Operators:DAMIN
 Test Date:2026-02-03

γ Range: 0 - 90DEG
 γ Interval: 5.0DEG
 Test System:EVERFINE GO-2000B_V1 SYSTEM V2.00.488
 Humidity:65.0%
 Test Distance:6.144m [K=1.0000]
 Remarks:

UGR(Unified Glare Rating) Table

Test:U:121.03V I:0.0970A P:11.626W PF:0.9903 Freq:60.00Hz										
Lamp Flux:948.8lx1 lm										
NAME: LS-SMC-7-C32-12W-5CCT-WH					TYPE:			WEIGHT:		
SPEC.:					DIM.:			SERIAL No.: 1#30K		
MFR.: YOURZOR					SUR.: 0.154			Shielding Angle:		
ceiling/cavity	0.7	0.7	0.5	0.5	0.3	0.7	0.7	0.5	0.5	0.3
walls	0.5	0.3	0.5	0.3	0.3	0.5	0.3	0.5	0.3	0.3
working plane	0.2	0.2	0.2	0.2	0.2	0.2	0.2	0.2	0.2	0.2
Room dimensions	Viewed crosswise					Viewed endwise				
x = 2H y = 2H	22.3	23.8	22.6	24.0	24.2	22.4	23.9	22.7	24.1	24.3
3H	23.4	24.8	23.7	25.0	25.3	23.6	25.0	23.9	25.2	25.5
4H	23.7	25.0	24.0	25.3	25.5	24.0	25.3	24.3	25.5	25.8
6H	23.8	25.0	24.1	25.3	25.5	24.1	25.3	24.4	25.6	25.9
8H	23.8	24.9	24.1	25.2	25.5	24.1	25.2	24.4	25.5	25.8
12H	23.7	24.8	24.1	25.1	25.4	24.0	25.2	24.4	25.5	25.8
4H 2H	22.8	24.1	23.1	24.3	24.6	22.9	24.2	23.2	24.4	24.7
3H	24.0	25.1	24.4	25.4	25.7	24.2	25.3	24.6	25.6	25.9
4H	24.3	25.4	24.7	25.7	26.0	24.6	25.6	25.0	26.0	26.3
6H	24.4	25.4	24.8	25.7	26.1	24.8	25.7	25.2	26.0	26.4
8H	24.4	25.3	24.8	25.6	26.0	24.8	25.6	25.2	26.0	26.4
12H	24.4	25.2	24.8	25.6	26.0	24.7	25.5	25.2	25.9	26.3
8H 4H	24.4	25.2	24.8	25.6	26.0	24.7	25.5	25.1	25.9	26.2
6H	24.5	25.2	25.0	25.6	26.1	24.9	25.6	25.3	26.0	26.4
8H	24.5	25.1	25.0	25.6	26.0	24.9	25.5	25.3	25.9	26.3
12H	24.5	25.0	25.0	25.5	26.0	24.9	25.4	25.3	25.8	26.3
12H 4H	24.4	25.1	24.8	25.5	25.9	24.6	25.4	25.0	25.8	26.2
6H	24.5	25.1	25.0	25.5	26.0	24.8	25.4	25.3	25.9	26.3
8H	24.5	25.0	25.0	25.5	26.0	24.8	25.4	25.3	25.8	26.3
Variations with the observer position at spacings(CIE Pub.117):										
S = 1.0H	+ 0.2 / - 0.2					+ 0.2 / - 0.2				
1.5H	+ 0.2 / - 0.4					+ 0.2 / - 0.4				
2.0H	+ 0.6 / - 0.7					+ 0.5 / - 0.7				

CIE Pub.117, 948.8 lm Total Lamp Luminous Flux Correct (8log(F/F0) = -0.2)
 Area: 0.0187 m2

C Range: 0 - 360DEG
 C Interval: 30.0DEG
 Test Speed: HIGH
 Temperature:25.3°C
 Operators:DAMIN
 Test Date:2026-02-03

γ Range: 0 - 90DEG
 γ Interval: 5.0DEG
 Test System:EVERFINE GO-2000B_V1 SYSTEM V2.00.488
 Humidity:65.0%
 Test Distance:6.144m [K=1.0000]
 Remarks:

UTILIZATION FACTORS TABLE

Test:U:121.03V I:0.0970A P:11.626W PF:0.9903 Freq:60.00Hz Lamp Flux:948.81x1 lm		
NAME: LS-SMC-7-C32-12W-5CCT-WH	TYPE:	WEIGHT:
SPEC.:	DIM.:	SERIAL No.: 1#30K
MFR.: YOURZOR	SUR.: 0.154	Shielding Angle:

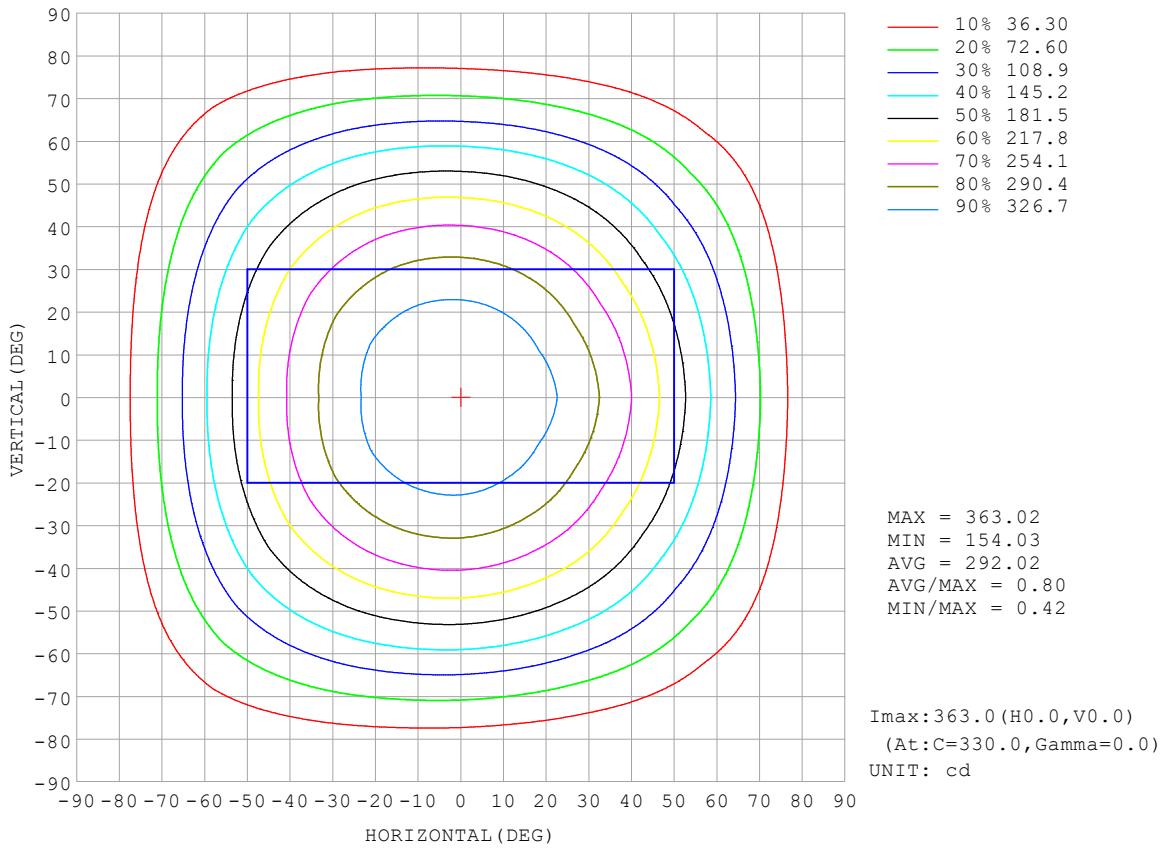
REFLECTANCE										
Ceiling	0.8	0.8	0.8	0.7	0.7	0.7	0.5	0.5	0.5	0
Walls	0.7	0.5	0.3	0.7	0.5	0.3	0.7	0.5	0.3	0
Working plane	0.2	0.2	0.2	0.2	0.2	0.2	0.2	0.2	0.2	0
ROOM INDEX	UTILIZATION FACTORS (PERCENT) $k(RI) \times RCR = 5$									
k = 0.60	59	48	41	59	48	41	57	47	41	35
0.80	69	58	51	68	58	51	67	57	51	44
1.00	78	67	60	77	67	60	75	68	59	53
1.25	85	75	68	84	74	68	81	73	67	60
1.50	90	81	74	88	80	73	85	78	72	65
2.00	97	89	82	95	87	82	91	85	80	73
2.50	100	93	87	98	92	86	95	89	85	77
3.00	103	97	92	101	96	91	97	93	89	80
4.00	107	102	98	105	100	96	101	97	94	85
5.00	110	105	101	107	103	100	103	100	97	88
ROOM INDEX	UF(total)									Direct
According to DIN EN 13032-2 2004			Suspended				SHRNOM = 1.25			

C Range: 0 - 360DEG
 C Interval: 30.0DEG
 Test Speed: HIGH
 Temperature:25.3°C
 Operators:DAMIN
 Test Date:2026-02-03

γ Range: 0 - 90DEG
 γ Interval: 5.0DEG
 Test System:EVERFINE GO-2000B_V1 SYSTEM V2.00.488
 Humidity:65.0%
 Test Distance:6.144m [K=1.0000]
 Remarks:

ISOCANDELA DIAGRAM

Test:U:121.03V I:0.0970A P:11.626W PF:0.9903 Freq:60.00Hz Lamp Flux:948.81x1 lm		
NAME: LS-SMC-7-C32-12W-5CCT-WH	TYPE:	WEIGHT:
SPEC.:	DIM.:	SERIAL No.: 1#30K
MFR.: YOURZOR	SUR.: 0.154	Shielding Angle:

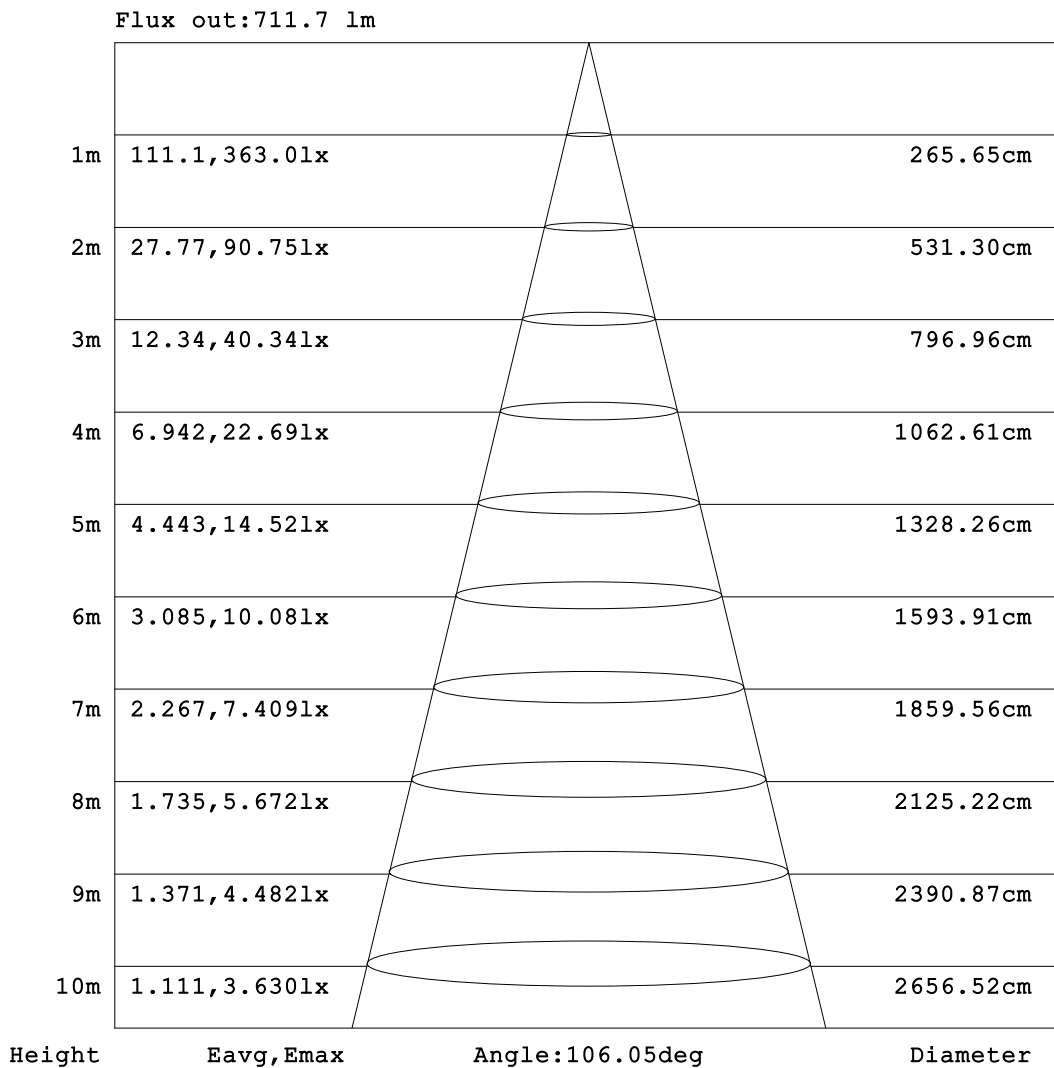


C Range: 0 - 360DEG
 C Interval: 30.0DEG
 Test Speed: HIGH
 Temperature:25.3°C
 Operators:DAMIN
 Test Date:2026-02-03

γ Range: 0 - 90DEG
 γ Interval: 5.0DEG
 Test System:EVERFINE GO-2000B_V1 SYSTEM V2.00.488
 Humidity:65.0%
 Test Distance:6.144m [K=1.0000]
 Remarks:

AAI Figure

Test:U:121.03V I:0.0970A P:11.626W PF:0.9903 Freq:60.00Hz Lamp Flux:948.81x1 lm		
NAME: LS-SMC-7-C32-12W-5CCT-WH	TYPE:	WEIGHT:
SPEC.:	DIM.:	SERIAL No.: 1#30K
MFR.: YOURZOR	SUR.: 0.154	Shielding Angle:



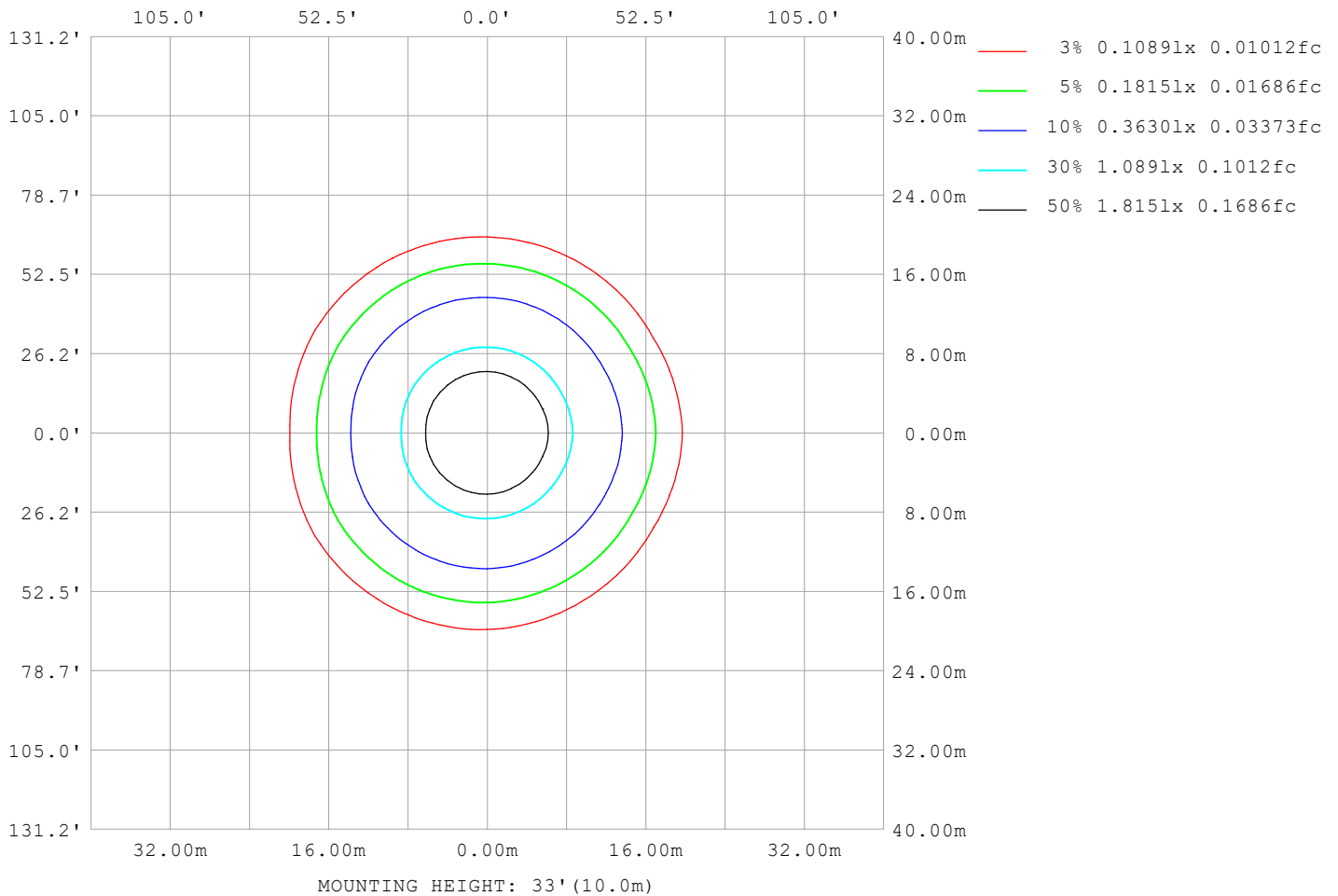
Note:The Curves indicate the illuminated area and the average illumination when the luminaire is at different distance.

C Range: 0 - 360DEG
C Interval: 30.0DEG
Test Speed: HIGH
Temperature:25.3°C
Operators:DAMIN
Test Date:2026-02-03

γ Range: 0 - 90DEG
γ Interval: 5.0DEG
Test System:EVERFINE GO-2000B_V1 SYSTEM V2.00.488
Humidity:65.0%
Test Distance:6.144m [K=1.0000]
Remarks:

ISOLUX DIAGRAM

Test:U:121.03V I:0.0970A P:11.626W PF:0.9903 Freq:60.00Hz Lamp Flux:948.81x1 lm		
NAME: LS-SMC-7-C32-12W-5CCT-WH	TYPE:	WEIGHT:
SPEC.:	DIM.:	SERIAL No.: 1#30K
MFR.: YOURZOR	SUR.: 0.154	Shielding Angle:



C Range: 0 - 360DEG
 C Interval: 30.0DEG
 Test Speed: HIGH
 Temperature:25.3°C
 Operators:DAMIN
 Test Date:2026-02-03

γ Range: 0 - 90DEG
 γ Interval: 5.0DEG
 Test System:EVERFINE GO-2000B_V1 SYSTEM V2.00.488
 Humidity:65.0%
 Test Distance:6.144m [K=1.0000]
 Remarks:

LED Avg.L Report

Test:U:121.03V I:0.0970A P:11.626W PF:0.9903 Freq:60.00Hz Lamp Flux:948.81x1 lm		
NAME: LS-SMC-7-C32-12W-5CCT-WH	TYPE:	WEIGHT:
SPEC.:	DIM.:	SERIAL No.: 1#30K
MFR.: YOURZOR	SUR.: 0.154	Shielding Angle:

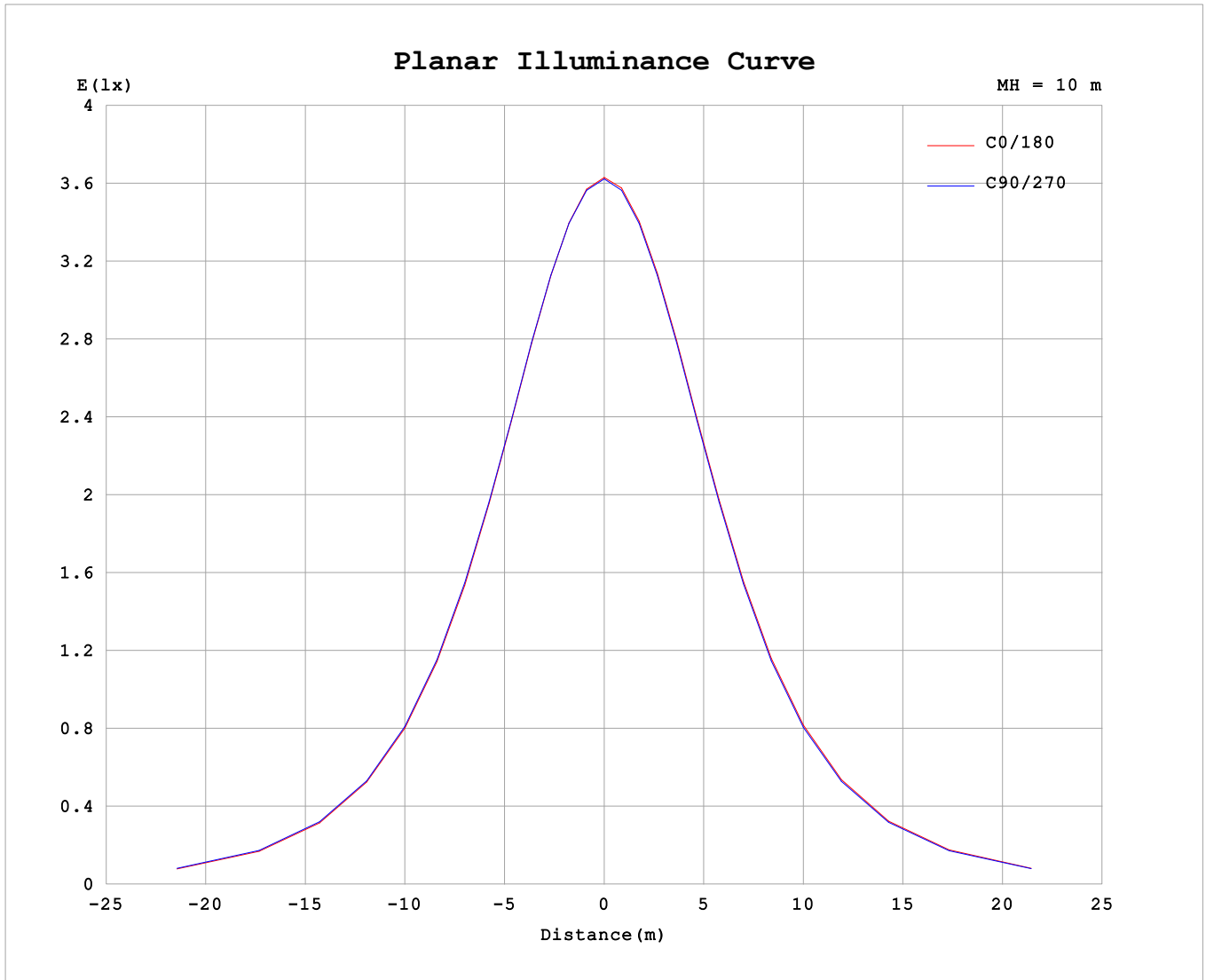
AvgL	cd/m2
L_0~180 (65) av	13582
L_0~180 (75) av	9675
L_0~180 (85) av	3302
L_90~270 (65) av	13599
L_90~270 (75) av	9868
L_90~270 (85) av	3383
L_45 (65) av	13573
L_45 (75) av	9764
L_45 (85) av	3345

Standard: GB/T 29293-2012

C Range: 0 - 360DEG
 C Interval: 30.0DEG
 Test Speed: HIGH
 Temperature:25.3℃
 Operators:DAMIN
 Test Date:2026-02-03

γ Range: 0 - 90DEG
 γ Interval: 5.0DEG
 Test System:EVERFINE GO-2000B_V1 SYSTEM V2.00.488
 Humidity:65.0%
 Test Distance:6.144m [K=1.0000]
 Remarks:

Planar Illuminance Curve



C Range: 0 - 360DEG
 C Interval: 30.0DEG
 Test Speed: HIGH
 Temperature: 25.3°C
 Operators: DAMIN
 Test Date: 2026-02-03

γ Range: 0 - 90DEG
 γ Interval: 5.0DEG
 Test System: EVERFINE GO-2000B_V1 SYSTEM V2.00.488
 Humidity: 65.0%
 Test Distance: 6.144m [K=1.0000]
 Remarks:

LUMINOUS DISTRIBUTION INTENSITY DATA

Test:U:121.03V I:0.0970A P:11.626W PF:0.9903 Freq:60.00Hz Lamp Flux:948.81x1 lm		
NAME: LS-SMC-7-C32-12W-5CCT-WH	TYPE:	WEIGHT:
SPEC.:	DIM.:	SERIAL No.: 1#30K
MFR.: YOURZOR	SUR.: 0.154	Shielding Angle:

Table--1

UNIT: cd

C (DEG) γ (DEG)	0	30	60	90	120	150	180	210	240	270	300	330								
0	362	362	362	362	362	362	362	362	362	362	362	362								
5	360	359	360	361	361	362	361	362	361	361	360	360								
10	355	353	354	355	357	357	356	358	357	355	354	353								
15	346	343	345	347	349	350	348	350	349	347	345	344								
20	334	330	332	335	337	339	336	339	338	335	333	331								
25	319	314	317	320	323	325	321	325	323	320	318	315								
30	301	296	298	303	306	308	304	308	306	302	299	296								
35	279	273	276	282	286	288	282	288	286	281	277	273								
40	254	247	251	257	261	264	258	264	261	255	251	247								
45	226	219	223	229	234	238	231	237	234	228	224	220								
50	198	190	194	200	206	209	202	209	206	199	194	190								
55	167	160	163	170	176	180	172	179	176	169	164	160								
60	136	128	132	140	145	149	141	148	145	138	133	128								
65	105	96.9	101	108	114	118	110	117	113	106	101	96.8								
70	74.0	66.2	70.5	77.9	83.2	86.7	78.8	85.7	82.1	76.1	70.8	66.2								
75	44.6	37.6	41.9	48.7	53.7	56.7	49.1	55.8	52.5	46.8	42.0	37.8								
80	18.7	13.6	16.7	22.1	26.4	29.1	22.4	28.2	25.5	20.5	16.6	13.2								
85	5.06	3.84	4.54	5.66	6.42	7.19	5.70	7.08	6.23	5.37	4.49	3.82								
90	0.47	0.52	0.50	0.47	0.92	1.52	0.55	1.63	0.86	0.55	0.58	0.60								

C Range: 0 - 360DEG
 C Interval: 30.0DEG
 Test Speed: HIGH
 Temperature:25.3℃
 Operators:DAMIN
 Test Date:2026-02-03
 γ Range: 0 - 90DEG
 γ Interval: 5.0DEG
 Test System:EVERFINE GO-2000B_V1 SYSTEM V2.00.488
 Humidity:65.0%
 Test Distance:6.144m [K=1.0000]
 Remarks: