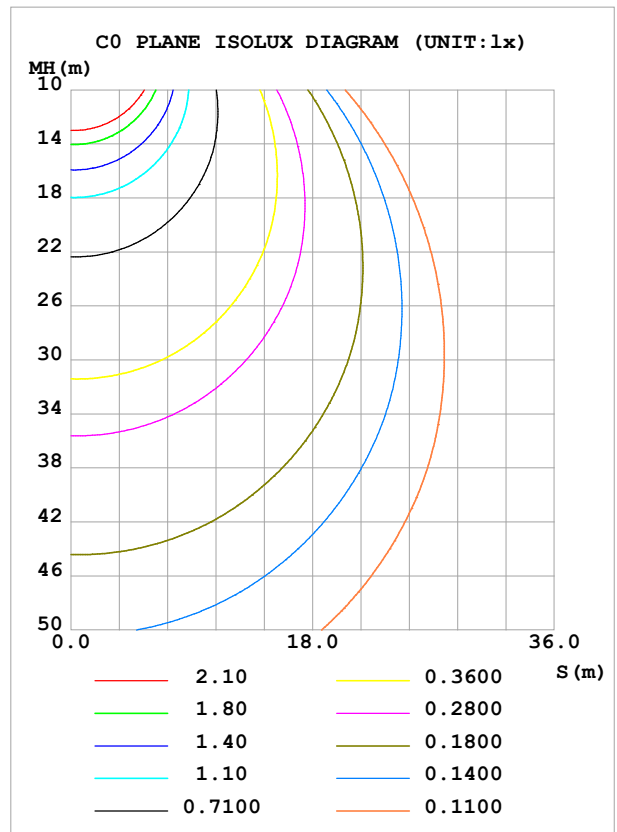
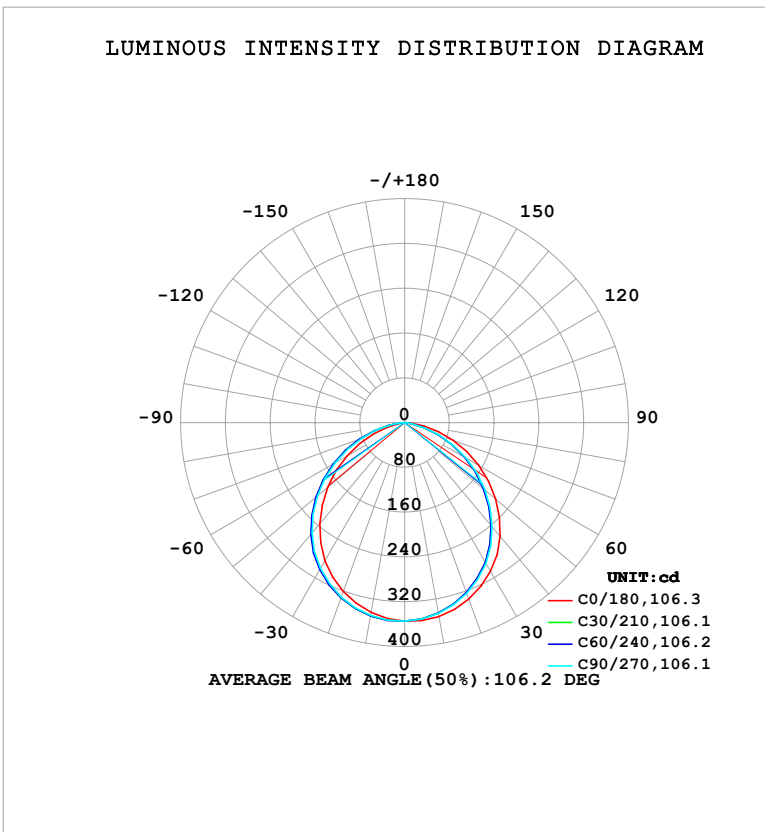


**LUMINAIRE PHOTOMETRIC TEST REPORT**

Test:U:121.03V I:0.0970A P:11.630W PF:0.9903 Freq:60.00Hz Lamp Flux:928.506x1 lm		
NAME: LS-SMC-7-C32-12W-5CCT-BL	TYPE:	WEIGHT:
SPEC.:	DIM.:	SERIAL No.: 1#30K
MFR.: YOURZOR	SUR.: 0.154	Shielding Angle:

DATA OF LAMP		PHOTOMETRIC DATA			
MSBEMC-7-C32-12W-5CCT-BL-30K		Imax (cd)	355.0	S/MH (C0/180)	1.20
NOMINAL POWER (W)	12	LOR (%)	100.0	S/MH (C90/270)	1.26
RATED VOLTAGE (V)	120	TOTAL FLUX (lm)	928.51	$\eta$ UP, DN (C0-180)	0.0,49.3
NOMINAL FLUX (lm)	928.506	CIE CLASS	DIRECT	$\eta$ UP, DN (C180-360)	0.0,50.7
LAMPS INSIDE	1	$\eta$ up (%)	0.0	CIBSE SHR NOM	1.25
TEST VOLTAGE (V)	120	$\eta$ down (%)	100.0	CIBSE SHR MAX	1.35



C Range: 0 - 360DEG  
 C Interval: 30.0DEG  
 Test Speed: HIGH  
 Temperature: 25.3°C  
 Operators: DAMIN  
 Test Date: 2026-02-03

$\gamma$  Range: 0 - 90DEG  
 $\gamma$  Interval: 5.0DEG  
 Test System: EVERFINE GO-2000B\_V1 SYSTEM V2.00.488  
 Humidity: 65.0%  
 Test Distance: 6.144m [K=1.0000]  
 Remarks:

ZONAL FLUX DIAGRAM

ZONAL FLUX DIAGRAM:

$\gamma$	C0	C45	C90	C135	C180	C225	C270	C315	$\gamma$	$\Phi$ zone	$\Phi$ total	%lum,lamp
10	351.8	345.4	346.2	347.7	344.3	350.6	349.8	348.4	0- 10	33.54	33.54	3.61,3.61
20	335.5	322.9	324.2	327.5	320.8	333.0	331.6	328.7	10- 20	95.82	129.4	13.9,13.9
30	306.8	288.7	290.6	295.3	285.3	303.0	300.9	296.9	20- 30	144.4	273.7	29.5,29.5
40	265.1	240.6	243.4	249.3	236.0	260.0	257.3	251.7	30- 40	171.7	445.5	48,48
50	212.2	184.4	187.5	194.2	179.4	206.5	203.2	196.6	40- 50	172.5	618.0	66.6,66.6
60	153.3	123.9	127.1	134.3	118.8	147.2	143.4	136.6	50- 60	148.2	766.2	82.5,82.5
70	92.14	63.15	66.26	73.89	59.00	85.60	81.90	75.98	60- 70	103.9	870.1	93.7,93.7
80	34.71	11.86	14.32	20.05	9.152	28.84	25.95	21.17	70- 80	49.45	919.6	99,99
90	2.931	0.5174	0.5045	0.4645	0.6429	1.861	1.194	0.5353	80- 90	8.924	928.5	100,100
100									90-100			
110									100-110			
120									110-120			
130									120-130			
140									130-140			
150									140-150			
160									150-160			
170									160-170			
180									170-180			
DEG	LUMINOUS INTENSITY:cd									UNIT:lm		

Conical surface Flux(90deg): 533.27 lm

%lum = 57.4%

%lamp = 57.4%

Conical surface Flux(130deg): 824.66 lm

%lum = 88.8%

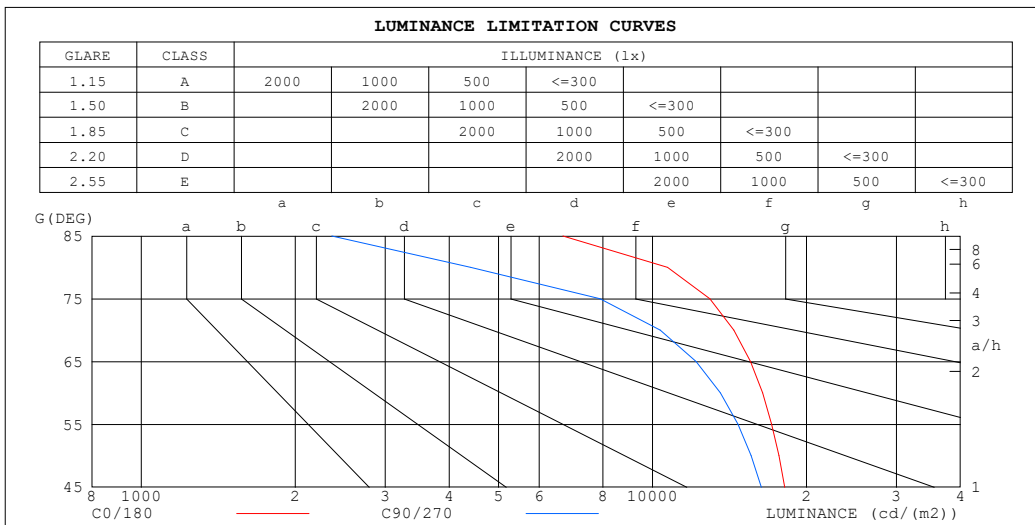
%lamp = 88.8%

C Range: 0 - 360DEG  
 C Interval: 30.0DEG  
 Test Speed: HIGH  
 Temperature:25.3°C  
 Operators:DAMIN  
 Test Date:2026-02-03

$\gamma$  Range: 0 - 90DEG  
 $\gamma$  Interval: 5.0DEG  
 Test System:EVERFINE GO-2000B\_V1 SYSTEM V2.00.488  
 Humidity:65.0%  
 Test Distance:6.144m [K=1.0000]  
 Remarks:

**LUMINANCE LIMITATION CURVES**

Test:U:121.03V I:0.0970A P:11.630W PF:0.9903 Freq:60.00Hz Lamp Flux:928.506x1 lm		
NAME: LS-SMC-7-C32-12W-5CCT-BL	TYPE:	WEIGHT:
SPEC.:	DIM.:	SERIAL No.: 1#30K
MFR.: YOURZOR	SUR.: 0.154	Shielding Angle:



LUMINANCE cd/(m2)		
G (DEG)	C0/180	C90/270
85	6675	2357
80	10698	4408
75	12945	7896
70	14418	10351
65	15543	12173
60	16413	13579
55	17099	14688
50	17670	15587
45	18135	16335

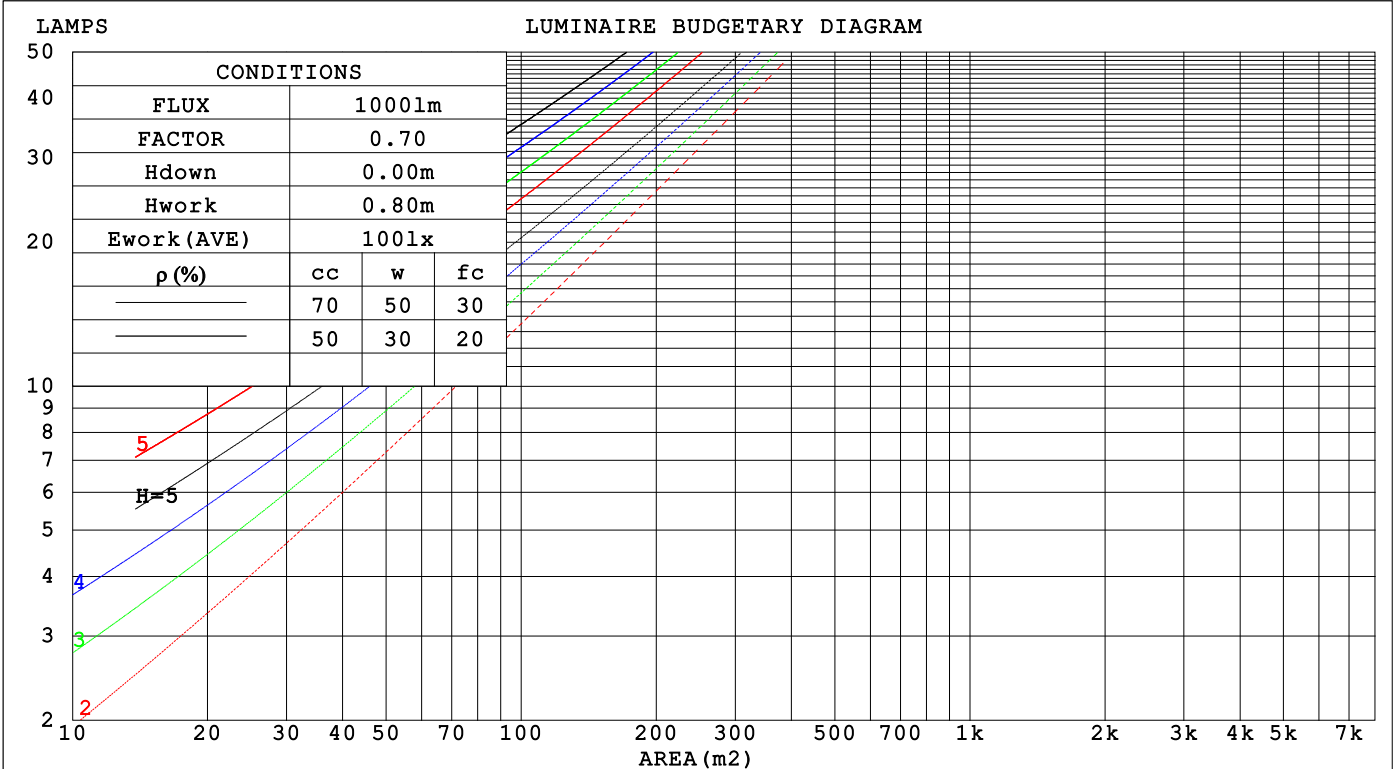
C Range: 0 - 360DEG  
 C Interval: 30.0DEG  
 Test Speed: HIGH  
 Temperature:25.3°C  
 Operators:DAMIN  
 Test Date:2026-02-03

γ Range: 0 - 90DEG  
 γ Interval: 5.0DEG  
 Test System:EVERFINE GO-2000B\_V1 SYSTEM V2.00.488  
 Humidity:65.0%  
 Test Distance:6.144m [K=1.0000]  
 Remarks:

**CU AND LUMINAIRE BUDGETARY ESTIMATE DIAGRAM**

Test:U:121.03V I:0.0970A P:11.630W PF:0.9903 Freq:60.00Hz Lamp Flux:928.506x1 lm		
NAME: LS-SMC-7-C32-12W-5CCT-BL	TYPE:	WEIGHT:
SPEC.:	DIM.:	SERIAL No.: 1#30K
MFR.: YOURZOR	SUR.: 0.154	Shielding Angle:

pcc	80%			70%			50%			30%			10%			0
	50%	30%	10%	50%	30%	10%	50%	30%	10%	50%	30%	10%	50%	30%	10%	0
p <sub>w</sub>																0
p <sub>fc</sub>	20%			20%			20%			20%			20%			0
RCR	RCR:Room Cavity Ratio      Coefficients of Utilization(CU)															
0.0	1.19	1.19	1.19	1.16	1.16	1.16	1.11	1.11	1.11	1.06	1.06	1.06	1.02	1.02	1.02	1.00
1.0	1.05	1.01	.97	1.03	.99	.96	.99	.96	.93	.95	.92	.90	.91	.89	.87	.85
2.0	.92	.86	.80	.90	.84	.79	.87	.82	.77	.83	.79	.76	.80	.77	.74	.72
3.0	.81	.73	.67	.80	.72	.67	.77	.70	.65	.74	.69	.64	.71	.67	.63	.61
4.0	.72	.64	.57	.71	.63	.57	.68	.61	.56	.66	.60	.55	.64	.59	.54	.52
5.0	.65	.56	.49	.64	.55	.49	.61	.54	.49	.59	.53	.48	.58	.52	.48	.45
6.0	.58	.50	.43	.57	.49	.43	.56	.48	.43	.54	.47	.42	.52	.46	.42	.40
7.0	.53	.44	.38	.52	.44	.38	.51	.43	.38	.49	.43	.38	.48	.42	.37	.35
8.0	.48	.40	.34	.48	.40	.34	.46	.39	.34	.45	.38	.34	.44	.38	.33	.32
9.0	.44	.36	.31	.44	.36	.31	.43	.36	.31	.42	.35	.30	.41	.35	.30	.28
10.0	.41	.33	.28	.40	.33	.28	.39	.33	.28	.39	.32	.28	.38	.32	.28	.26



C Range: 0 - 360DEG  
 C Interval: 30.0DEG  
 Test Speed: HIGH  
 Temperature:25.3°C  
 Operators:DAMIN  
 Test Date:2026-02-03

γ Range: 0 - 90DEG  
 γ Interval: 5.0DEG  
 Test System:EVERFINE GO-2000B\_V1 SYSTEM V2.00.488  
 Humidity:65.0%  
 Test Distance:6.144m [K=1.0000]  
 Remarks:

**WEC AND CCEC**

Test:U:121.03V I:0.0970A P:11.630W PF:0.9903 Freq:60.00Hz								
Lamp Flux:928.506x1 lm								
NAME: LS-SMC-7-C32-12W-5CCT-BL			TYPE:			WEIGHT:		
SPEC.:			DIM.:			SERIAL No.: 1#30K		
MFR.: YOURZOR			SUR.: 0.154			Shielding Angle:		

$\rho_{CC}$	80%			70%			50%			30%			10%			0
$\rho_w$	50%	30%	10%	50%	30%	10%	50%	30%	10%	50%	30%	10%	50%	30%	10%	0
$\rho_{fc}$	20%			20%			20%			20%			20%			0
RCR	RCR:Room Cavity Ratio						Wall Exitance Coefficients (WEC)									
0.0																
1.0	.288	.164	.052	.281	.160	.051	.268	.154	.049	.255	.147	.047	.244	.142	.046	
2.0	.276	.151	.046	.270	.149	.046	.258	.144	.045	.247	.139	.043	.238	.134	.042	
3.0	.258	.137	.041	.253	.135	.041	.242	.131	.040	.233	.128	.039	.224	.124	.038	
4.0	.240	.125	.037	.235	.123	.036	.226	.120	.036	.218	.117	.035	.210	.114	.035	
5.0	.223	.114	.033	.219	.112	.033	.211	.110	.032	.203	.107	.032	.196	.105	.032	
6.0	.208	.104	.030	.204	.103	.030	.197	.101	.029	.190	.099	.029	.184	.097	.029	
7.0	.194	.096	.027	.191	.095	.027	.184	.093	.027	.178	.091	.027	.173	.090	.026	
8.0	.182	.089	.025	.179	.088	.025	.173	.086	.025	.168	.085	.024	.163	.083	.024	
9.0	.171	.083	.023	.168	.082	.023	.163	.081	.023	.158	.079	.023	.153	.078	.023	
10.0	.161	.077	.021	.158	.076	.021	.154	.075	.021	.149	.074	.021	.145	.073	.021	

$\rho_{CC}$	80%			70%			50%			30%			10%			0
$\rho_w$	50%	30%	10%	50%	30%	10%	50%	30%	10%	50%	30%	10%	50%	30%	10%	0
$\rho_{fc}$	20%			20%			20%			20%			20%			0
RCR	RCR:Room Cavity Ratio						Ceiling Cavity Exitance Coefficients (CCEC)									
0.0																
1.0	.190	.190	.190	.163	.163	.163	.111	.111	.111	.064	.064	.064	.020	.020	.020	
2.0	.179	.156	.136	.153	.134	.117	.105	.092	.081	.060	.053	.047	.019	.017	.015	
3.0	.170	.132	.100	.146	.114	.086	.100	.079	.060	.058	.046	.035	.018	.015	.012	
4.0	.162	.114	.076	.139	.099	.066	.095	.068	.046	.055	.040	.027	.018	.013	.009	
5.0	.155	.101	.060	.133	.087	.052	.091	.061	.037	.053	.036	.022	.017	.012	.007	
6.0	.147	.090	.048	.126	.078	.042	.087	.055	.030	.050	.032	.018	.016	.010	.006	
7.0	.140	.082	.040	.121	.071	.035	.083	.050	.025	.048	.029	.015	.016	.010	.005	
8.0	.134	.075	.034	.115	.065	.030	.079	.046	.021	.046	.027	.012	.015	.009	.004	
9.0	.127	.069	.029	.110	.060	.025	.076	.042	.018	.044	.025	.011	.014	.008	.004	
10.0	.121	.064	.026	.105	.056	.022	.072	.039	.016	.042	.023	.009	.014	.008	.003	
10.0	.116	.060	.023	.100	.052	.020	.069	.037	.014	.040	.022	.008	.013	.007	.003	

C Range: 0 - 360DEG  
 C Interval: 30.0DEG  
 Test Speed: HIGH  
 Temperature:25.3°C  
 Operators:DAMIN  
 Test Date:2026-02-03

$\gamma$  Range: 0 - 90DEG  
 $\gamma$  Interval: 5.0DEG  
 Test System:EVERFINE GO-2000B\_V1 SYSTEM V2.00.488  
 Humidity:65.0%  
 Test Distance:6.144m [K=1.0000]  
 Remarks:

**UGR(Unified Glare Rating) Table**

Test:U:121.03V I:0.0970A P:11.630W PF:0.9903 Freq:60.00Hz										
Lamp Flux:928.506x1 lm										
NAME: LS-SMC-7-C32-12W-5CCT-BL					TYPE:			WEIGHT:		
SPEC.:					DIM.:			SERIAL No.: 1#30K		
MFR.: YOURZOR					SUR.: 0.154			Shielding Angle:		
ceiling/cavity	0.7	0.7	0.5	0.5	0.3	0.7	0.7	0.5	0.5	0.3
walls	0.5	0.3	0.5	0.3	0.3	0.5	0.3	0.5	0.3	0.3
working plane	0.2	0.2	0.2	0.2	0.2	0.2	0.2	0.2	0.2	0.2
Room dimensions	Viewed crosswise					Viewed endwise				
x = 2H y = 2H	22.6	24.1	22.9	24.3	24.5	22.1	23.6	22.4	23.8	24.0
3H	24.0	25.4	24.3	25.6	25.8	23.2	24.5	23.5	24.7	25.0
4H	24.5	25.8	24.8	26.0	26.3	23.4	24.7	23.7	24.9	25.2
6H	24.8	26.0	25.1	26.3	26.5	23.4	24.6	23.7	24.9	25.2
8H	24.8	25.9	25.1	26.2	26.5	23.4	24.5	23.7	24.8	25.1
12H	24.8	25.9	25.1	26.2	26.5	23.3	24.5	23.7	24.8	25.1
4H 2H	23.0	24.3	23.3	24.5	24.8	22.6	23.9	22.9	24.1	24.4
3H	24.4	25.6	24.8	25.8	26.1	23.7	24.9	24.1	25.2	25.5
4H	25.0	26.0	25.3	26.3	26.6	24.0	25.0	24.4	25.4	25.7
6H	25.3	26.2	25.7	26.5	26.9	24.1	25.0	24.5	25.3	25.7
8H	25.3	26.1	25.7	26.5	26.9	24.0	24.9	24.4	25.2	25.6
12H	25.3	26.1	25.7	26.5	26.9	24.0	24.8	24.4	25.2	25.6
8H 4H	24.9	25.8	25.3	26.1	26.5	24.1	24.9	24.5	25.3	25.6
6H	25.3	26.0	25.7	26.4	26.8	24.1	24.8	24.6	25.2	25.7
8H	25.3	25.9	25.8	26.4	26.8	24.1	24.7	24.6	25.2	25.6
12H	25.4	25.9	25.8	26.3	26.8	24.1	24.6	24.6	25.1	25.6
12H 4H	24.9	25.7	25.3	26.1	26.5	24.0	24.8	24.4	25.2	25.6
6H	25.3	25.9	25.7	26.3	26.7	24.1	24.7	24.6	25.1	25.6
8H	25.3	25.8	25.8	26.3	26.7	24.1	24.6	24.6	25.1	25.5
Variations with the observer position at spacings(CIE Pub.117):										
S = 1.0H	+ 0.1 / - 0.1					+ 0.2 / - 0.2				
1.5H	+ 0.2 / - 0.3					+ 0.2 / - 0.4				
2.0H	+ 0.7 / - 1.1					+ 0.6 / - 0.7				

CIE Pub.117, 928.5 lm Total Lamp Luminous Flux Correct (8log(F/F0) = -0.3)  
 Area: 0.0187 m2

C Range: 0 - 360DEG  
 C Interval: 30.0DEG  
 Test Speed: HIGH  
 Temperature:25.3°C  
 Operators:DAMIN  
 Test Date:2026-02-03

γ Range: 0 - 90DEG  
 γ Interval: 5.0DEG  
 Test System:EVERFINE GO-2000B\_V1 SYSTEM V2.00.488  
 Humidity:65.0%  
 Test Distance:6.144m [K=1.0000]  
 Remarks:

**UTILIZATION FACTORS TABLE**

Test:U:121.03V I:0.0970A P:11.630W PF:0.9903 Freq:60.00Hz Lamp Flux:928.506x1 lm		
NAME: LS-SMC-7-C32-12W-5CCT-BL	TYPE:	WEIGHT:
SPEC.:	DIM.:	SERIAL No.: 1#30K
MFR.: YOURZOR	SUR.: 0.154	Shielding Angle:

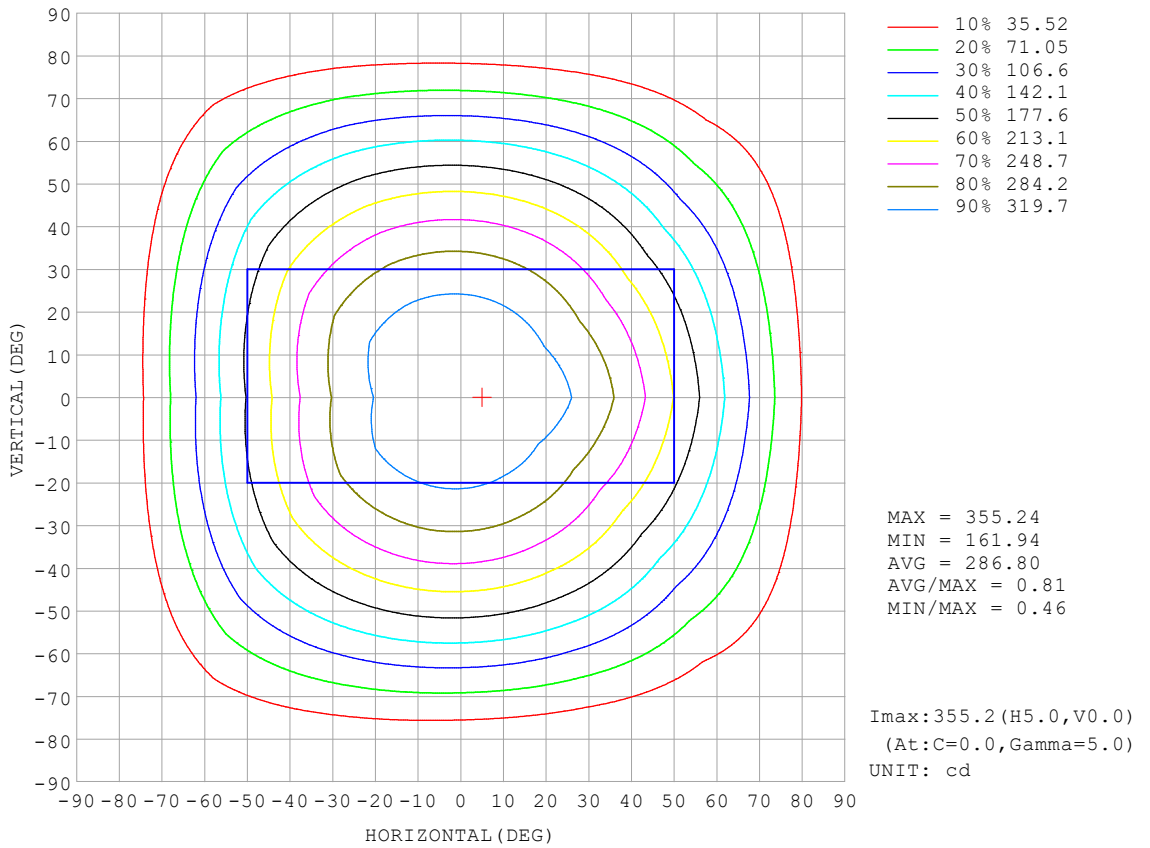
REFLECTANCE										
Ceiling	0.8	0.8	0.8	0.7	0.7	0.7	0.5	0.5	0.5	0
Walls	0.7	0.5	0.3	0.7	0.5	0.3	0.7	0.5	0.3	0
Working plane	0.2	0.2	0.2	0.2	0.2	0.2	0.2	0.2	0.2	0
ROOM INDEX	UTILIZATION FACTORS (PERCENT) $k(RI) \times RCR = 5$									
k = 0.60	59	48	41	59	48	41	57	47	41	35
0.80	69	58	51	68	58	51	67	57	51	44
1.00	78	67	60	77	67	60	75	68	60	53
1.25	85	75	68	84	74	68	81	73	67	60
1.50	90	81	74	88	80	73	85	78	72	65
2.00	97	89	82	95	87	82	91	85	80	73
2.50	100	93	87	98	92	86	95	89	85	77
3.00	103	97	92	101	96	91	97	93	89	80
4.00	107	102	98	105	100	96	101	97	94	85
5.00	110	105	101	107	103	100	103	99	97	88
ROOM INDEX	UF(total)									Direct
According to DIN EN 13032-2 2004			Suspended				SHRNOM = 1.25			

C Range: 0 - 360DEG  
 C Interval: 30.0DEG  
 Test Speed: HIGH  
 Temperature:25.3°C  
 Operators:DAMIN  
 Test Date:2026-02-03

$\gamma$  Range: 0 - 90DEG  
 $\gamma$  Interval: 5.0DEG  
 Test System:EVERFINE GO-2000B\_V1 SYSTEM V2.00.488  
 Humidity:65.0%  
 Test Distance:6.144m [K=1.0000]  
 Remarks:

**ISOCANDELA DIAGRAM**

Test:U:121.03V I:0.0970A P:11.630W PF:0.9903 Freq:60.00Hz Lamp Flux:928.506x1 lm		
NAME: LS-SMC-7-C32-12W-5CCT-BL	TYPE:	WEIGHT:
SPEC.:	DIM.:	SERIAL No.: 1#30K
MFR.: YOURZOR	SUR.: 0.154	Shielding Angle:

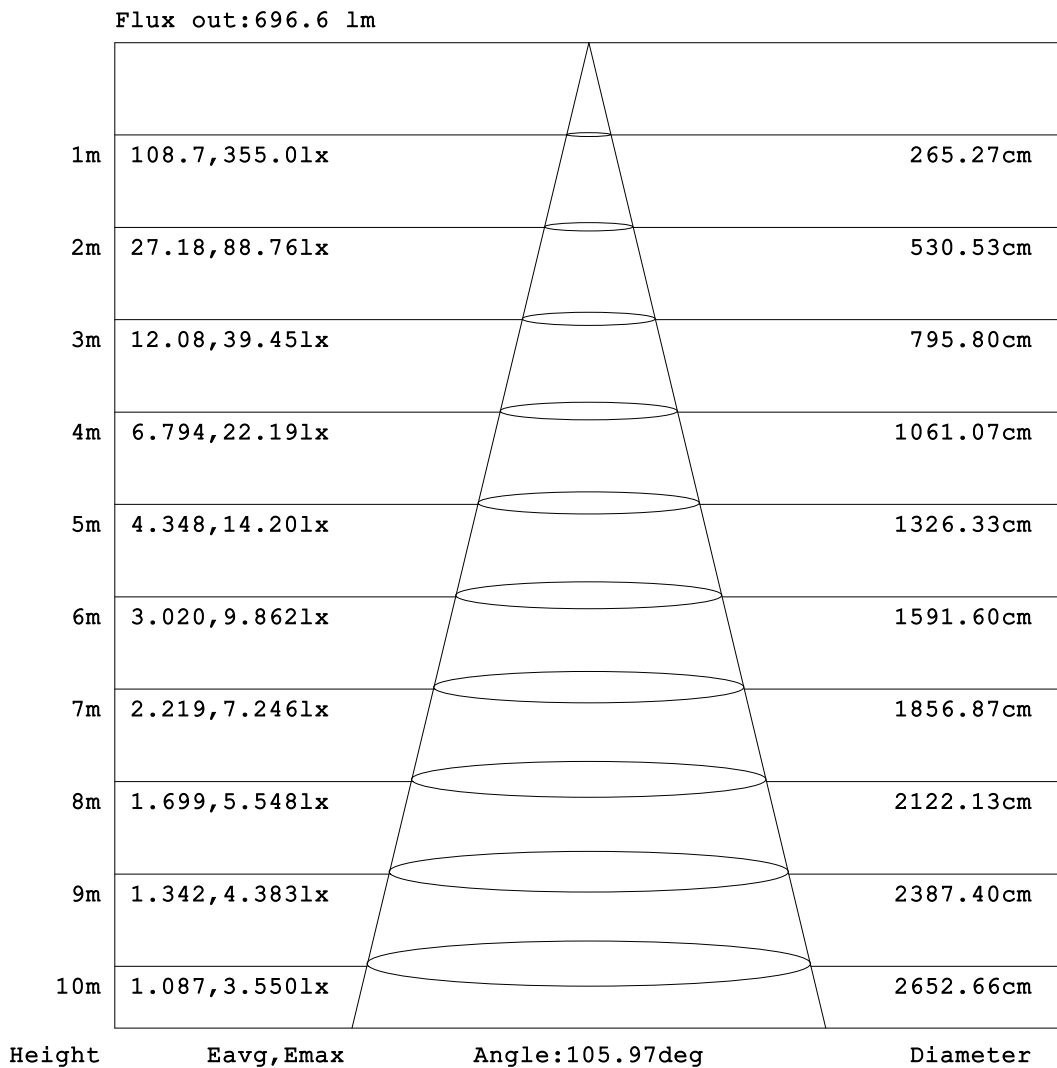


C Range: 0 - 360DEG  
 C Interval: 30.0DEG  
 Test Speed: HIGH  
 Temperature:25.3°C  
 Operators:DAMIN  
 Test Date:2026-02-03

γ Range: 0 - 90DEG  
 γ Interval: 5.0DEG  
 Test System:EVERFINE GO-2000B\_V1 SYSTEM V2.00.488  
 Humidity:65.0%  
 Test Distance:6.144m [K=1.0000]  
 Remarks:

**AAI Figure**

Test:U:121.03V I:0.0970A P:11.630W PF:0.9903 Freq:60.00Hz Lamp Flux:928.506x1 lm		
NAME: LS-SMC-7-C32-12W-5CCT-BL	TYPE:	WEIGHT:
SPEC.:	DIM.:	SERIAL No.: 1#30K
MFR.: YOURZOR	SUR.: 0.154	Shielding Angle:



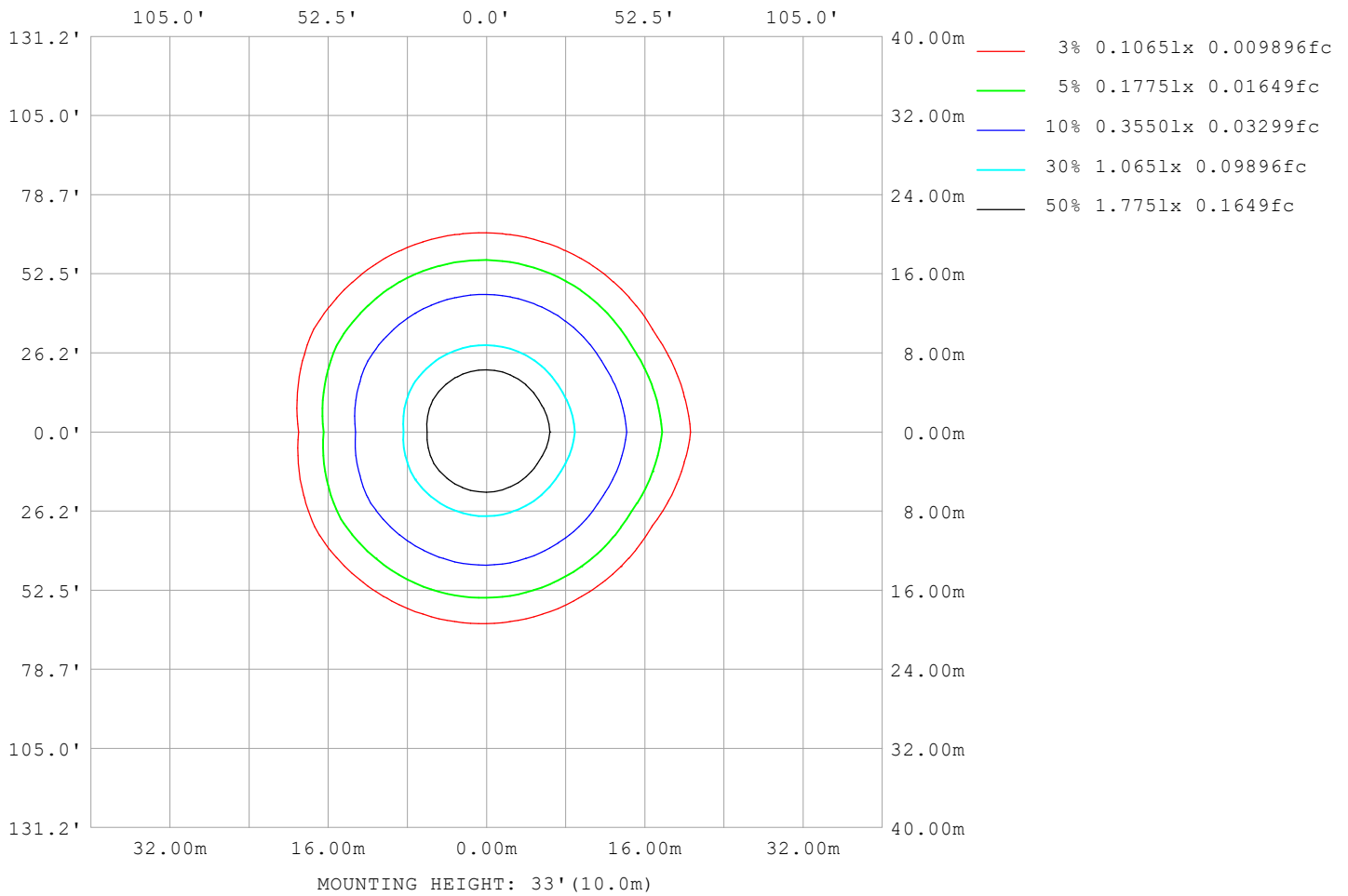
Note:The Curves indicate the illuminated area and the average illumination when the luminaire is at different distance.

C Range: 0 - 360DEG  
C Interval: 30.0DEG  
Test Speed: HIGH  
Temperature:25.3°C  
Operators:DAMIN  
Test Date:2026-02-03

γ Range: 0 - 90DEG  
γ Interval: 5.0DEG  
Test System:EVERFINE GO-2000B\_V1 SYSTEM V2.00.488  
Humidity:65.0%  
Test Distance:6.144m [K=1.0000]  
Remarks:

**ISOLUX DIAGRAM**

Test:U:121.03V I:0.0970A P:11.630W PF:0.9903 Freq:60.00Hz Lamp Flux:928.506x1 lm		
NAME: LS-SMC-7-C32-12W-5CCT-BL	TYPE:	WEIGHT:
SPEC.:	DIM.:	SERIAL No.: 1#30K
MFR.: YOURZOR	SUR.: 0.154	Shielding Angle:



C Range: 0 - 360DEG  
 C Interval: 30.0DEG  
 Test Speed: HIGH  
 Temperature:25.3°C  
 Operators:DAMIN  
 Test Date:2026-02-03

γ Range: 0 - 90DEG  
 γ Interval: 5.0DEG  
 Test System:EVERFINE GO-2000B\_V1 SYSTEM V2.00.488  
 Humidity:65.0%  
 Test Distance:6.144m [K=1.0000]  
 Remarks:

**LED Avg.L Report**

Test:U:121.03V I:0.0970A P:11.630W PF:0.9903 Freq:60.00Hz Lamp Flux:928.506x1 lm		
NAME: LS-SMC-7-C32-12W-5CCT-BL	TYPE:	WEIGHT:
SPEC.:	DIM.:	SERIAL No.: 1#30K
MFR.: YOURZOR	SUR.: 0.154	Shielding Angle:

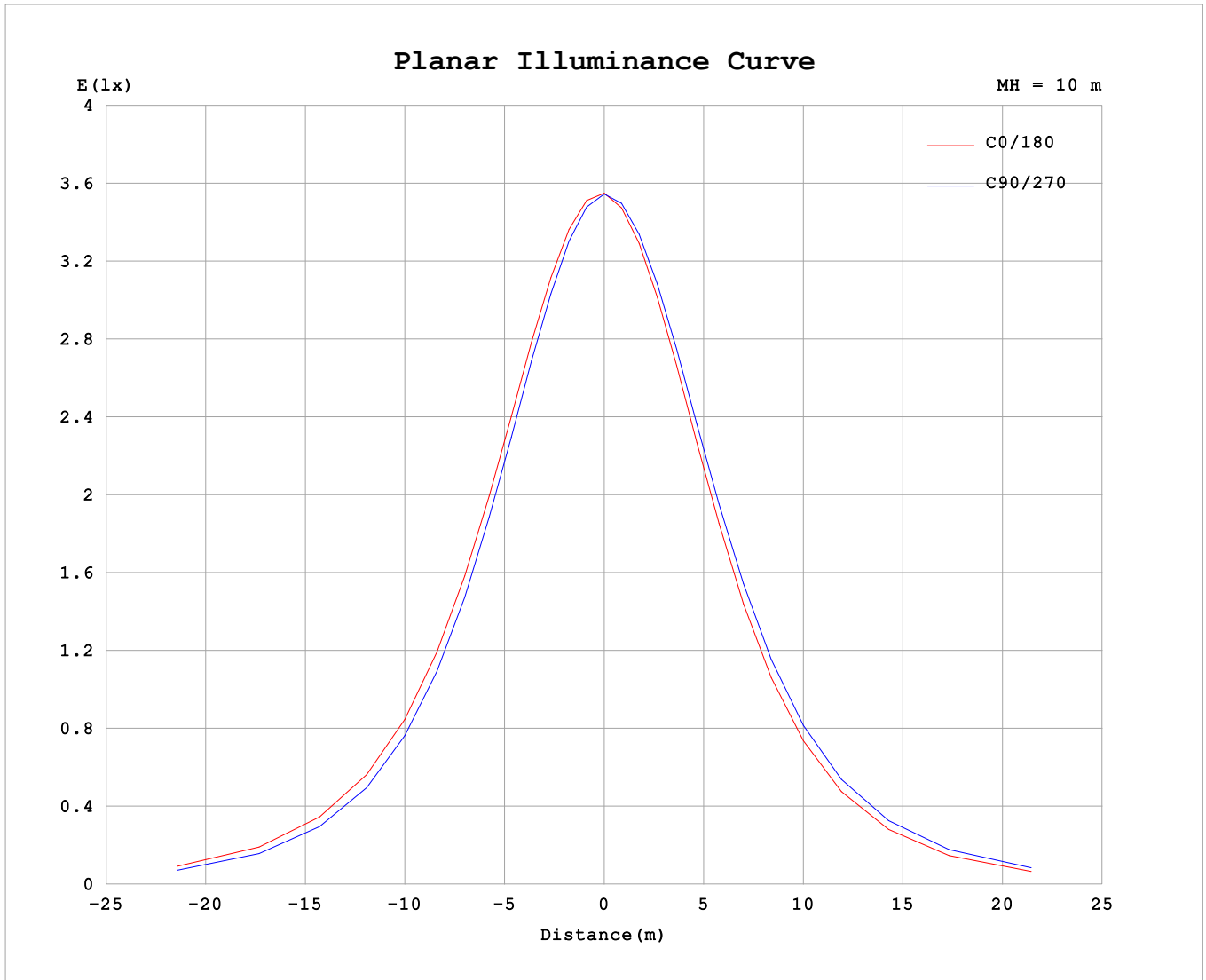
AvgL	cd/m2
L_0~180 (65) av	13357
L_0~180 (75) av	9744
L_0~180 (85) av	4061
L_90~270 (65) av	13203
L_90~270 (75) av	9399
L_90~270 (85) av	3161
L_45 (65) av	13259
L_45 (75) av	9498
L_45 (85) av	3275

Standard: GB/T 29293-2012

C Range: 0 - 360DEG  
 C Interval: 30.0DEG  
 Test Speed: HIGH  
 Temperature:25.3°C  
 Operators:DAMIN  
 Test Date:2026-02-03

γ Range: 0 - 90DEG  
 γ Interval: 5.0DEG  
 Test System:EVERFINE GO-2000B\_V1 SYSTEM V2.00.488  
 Humidity:65.0%  
 Test Distance:6.144m [K=1.0000]  
 Remarks:

**Planar Illuminance Curve**



C Range: 0 - 360DEG  
 C Interval: 30.0DEG  
 Test Speed: HIGH  
 Temperature: 25.3°C  
 Operators: DAMIN  
 Test Date: 2026-02-03

γ Range: 0 - 90DEG  
 γ Interval: 5.0DEG  
 Test System: EVERFINE GO-2000B\_V1 SYSTEM V2.00.488  
 Humidity: 65.0%  
 Test Distance: 6.144m [K=1.0000]  
 Remarks:

