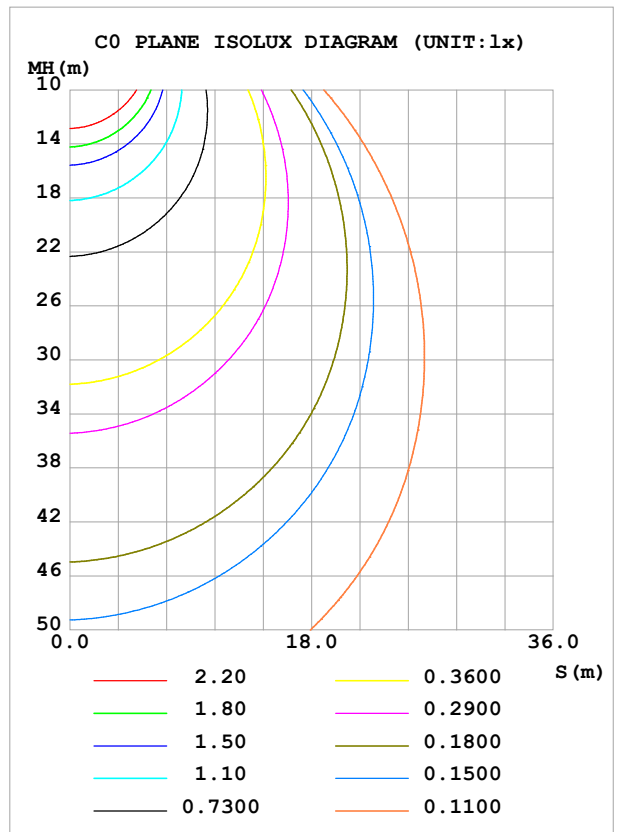
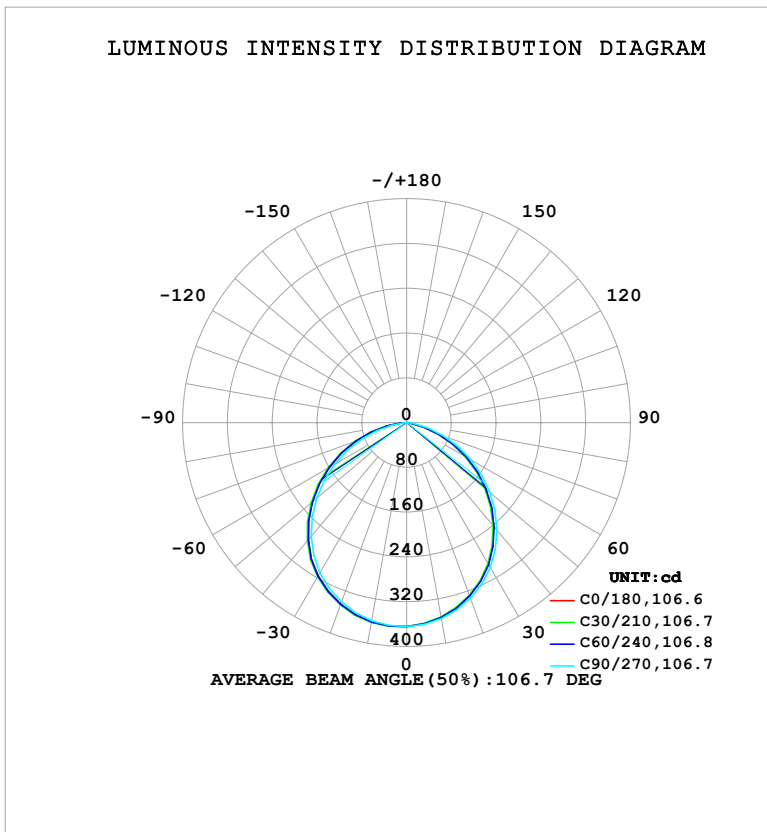


LUMINAIRE PHOTOMETRIC TEST REPORT

Test:U:121.03V I:0.0949A P:11.369W PF:0.9898 Freq:60.00Hz Lamp Flux:959.758x1 lm		
NAME: LS-SMC-7-C28-12W-5CCT-WH	TYPE:	WEIGHT:
SPEC.:	DIM.:	SERIAL No.: 1#30K
MFR.: YOURZOR	SUR.: 0.154	Shielding Angle:

DATA OF LAMP		PHOTOMETRIC DATA			
MSBEMC-7-C28-12W-5CCT-WH-30K		Imax (cd)	365.1	S/MH (C0/180)	1.29
NOMINAL POWER (W)	12	LOR (%)	100.0	S/MH (C90/270)	1.26
RATED VOLTAGE (V)	120	TOTAL FLUX (lm)	959.76	η UP, DN (C0-180)	0.0,47.9
NOMINAL FLUX (lm)	959.758	CIE CLASS	DIRECT	η UP, DN (C180-360)	0.0,52.1
LAMPS INSIDE	1	η up (%)	0.0	CIBSE SHR NOM	1.25
TEST VOLTAGE (V)	120	η down (%)	100.0	CIBSE SHR MAX	1.35



C Range: 0 - 360DEG
C Interval: 30.0DEG
Test Speed: HIGH
Temperature: 25.3°C
Operators: DAMIN
Test Date: 2026-02-03

γ Range: 0 - 90DEG
 γ Interval: 5.0DEG
Test System: EVERFINE GO-2000B_V1 SYSTEM V2.00.488
Humidity: 65.0%
Test Distance: 6.144m [K=1.0000]
Remarks:

ZONAL FLUX DIAGRAM

ZONAL FLUX DIAGRAM:

γ	C0	C45	C90	C135	C180	C225	C270	C315	γ	Φ zone	Φ total	%lum,lamp
10	353.1	353.0	355.5	358.9	361.6	362.0	359.4	355.7	0- 10	34.45	34.45	3.59,3.59
20	328.9	328.8	333.5	339.9	345.3	346.1	340.8	333.9	10- 20	98.43	132.9	13.8,13.8
30	292.1	292.0	299.4	308.7	316.3	317.5	310.1	299.9	20- 30	148.5	281.4	29.3,29.3
40	241.8	241.6	251.1	263.4	273.6	275.0	265.1	251.7	30- 40	176.7	458.1	47.7,47.7
50	184.0	183.8	194.6	208.5	220.1	221.4	209.9	195.2	40- 50	178.0	636.1	66.3,66.3
60	121.5	121.8	133.2	148.2	159.8	161.2	148.6	133.1	50- 60	153.7	789.9	82.3,82.3
70	59.30	59.95	71.13	85.26	96.17	97.94	85.53	69.84	60- 70	108.4	898.2	93.6,93.6
80	8.827	8.972	15.38	26.21	34.64	36.65	27.25	15.30	70- 80	51.76	950.0	99,99
90	0.5864	0.6063	0.5513	1.115	2.916	3.564	1.702	0.6641	80- 90	9.755	959.8	100,100
100									90-100			
110									100-110			
120									110-120			
130									120-130			
140									130-140			
150									140-150			
160									150-160			
170									160-170			
180									170-180			
DEG	LUMINOUS INTENSITY:cd									UNIT:lm		

Conical surface Flux(90deg): 548.6 lm

%lum = 57.2%

%lamp = 57.2%

Conical surface Flux(130deg): 850.74 lm

%lum = 88.6%

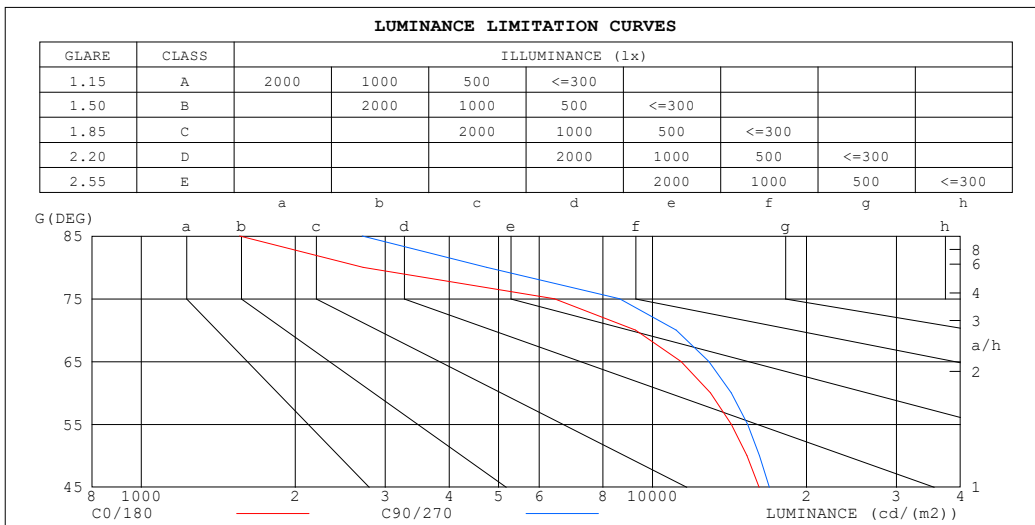
%lamp = 88.6%

C Range: 0 - 360DEG
 C Interval: 30.0DEG
 Test Speed: HIGH
 Temperature:25.3°C
 Operators:DAMIN
 Test Date:2026-02-03

γ Range: 0 - 90DEG
 γ Interval: 5.0DEG
 Test System:EVERFINE GO-2000B_V1 SYSTEM V2.00.488
 Humidity:65.0%
 Test Distance:6.144m [K=1.0000]
 Remarks:

LUMINANCE LIMITATION CURVES

Test:U:121.03V I:0.0949A P:11.369W PF:0.9898 Freq:60.00Hz Lamp Flux:959.758x1 lm		
NAME: LS-SMC-7-C28-12W-5CCT-WH	TYPE:	WEIGHT:
SPEC.:	DIM.:	SERIAL No.: 1#30K
MFR.: YOURZOR	SUR.: 0.154	Shielding Angle:



LUMINANCE cd/(m2)		
G (DEG)	C0/180	C90/270
85	1556	2706
80	2716	4738
75	6420	8617
70	9265	11124
65	11368	12885
60	12986	14251
55	14255	15334
50	15295	16190
45	16151	16918

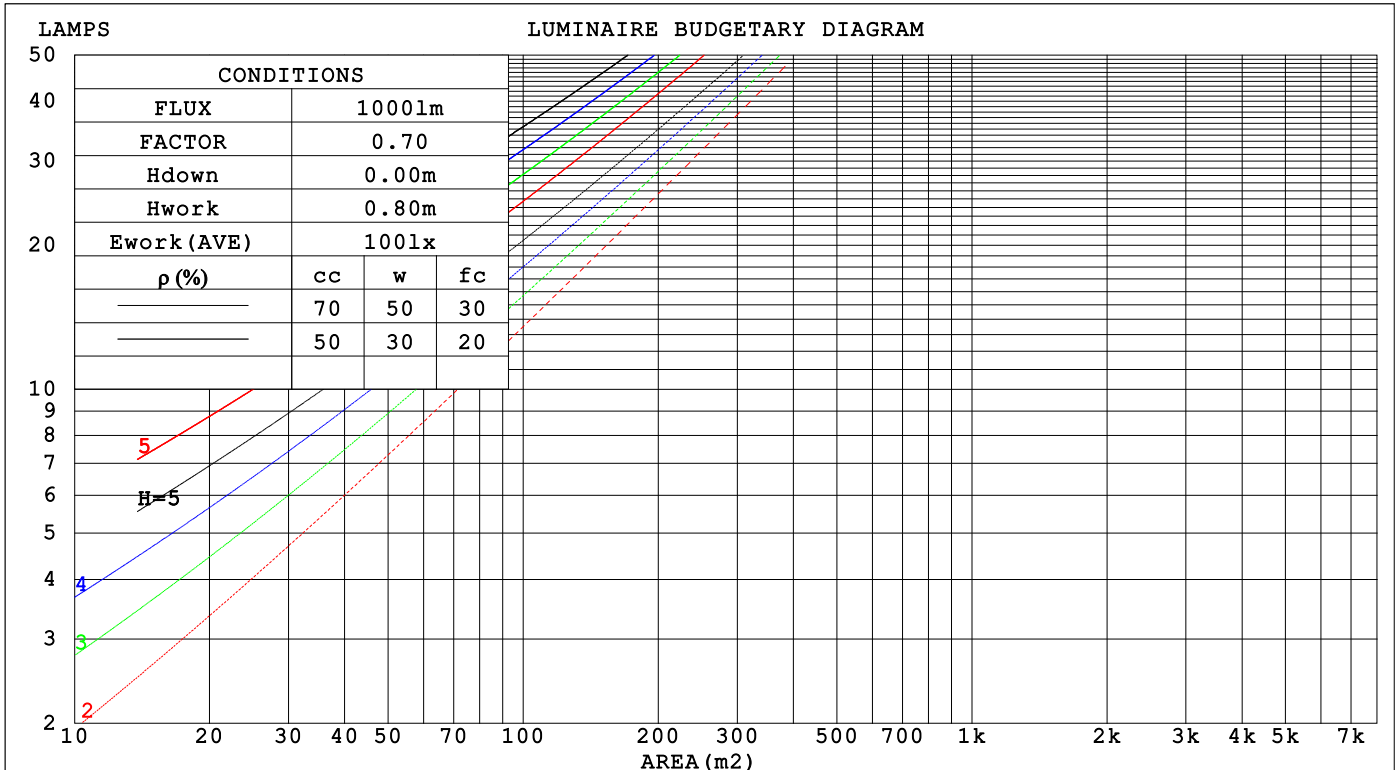
C Range: 0 - 360DEG
 C Interval: 30.0DEG
 Test Speed: HIGH
 Temperature:25.3°C
 Operators:DAMIN
 Test Date:2026-02-03

γ Range: 0 - 90DEG
 γ Interval: 5.0DEG
 Test System:EVERFINE GO-2000B_V1 SYSTEM V2.00.488
 Humidity:65.0%
 Test Distance:6.144m [K=1.0000]
 Remarks:

CU AND LUMINAIRE BUDGETARY ESTIMATE DIAGRAM

Test:U:121.03V I:0.0949A P:11.369W PF:0.9898 Freq:60.00Hz Lamp Flux:959.758x1 lm		
NAME: LS-SMC-7-C28-12W-5CCT-WH	TYPE:	WEIGHT:
SPEC.:	DIM.:	SERIAL No.: 1#30K
MFR.: YOURZOR	SUR.: 0.154	Shielding Angle:

ρcc	80%			70%			50%			30%			10%			0
ρw	50%	30%	10%	50%	30%	10%	50%	30%	10%	50%	30%	10%	50%	30%	10%	0
ρfc	20%			20%			20%			20%			20%			0
RCR	RCR:Room Cavity Ratio Coefficients of Utilization(CU)															
0.0	1.19	1.19	1.19	1.16	1.16	1.16	1.11	1.11	1.11	1.06	1.06	1.06	1.02	1.02	1.02	1.00
1.0	1.05	1.01	.97	1.03	.99	.96	.98	.95	.93	.95	.92	.90	.91	.89	.87	.85
2.0	.92	.85	.80	.90	.84	.79	.87	.82	.77	.83	.79	.75	.80	.77	.74	.72
3.0	.81	.73	.67	.80	.72	.66	.77	.70	.65	.74	.69	.64	.71	.67	.63	.61
4.0	.72	.64	.57	.71	.63	.57	.68	.61	.56	.66	.60	.55	.64	.59	.54	.52
5.0	.65	.56	.49	.63	.55	.49	.61	.54	.48	.59	.53	.48	.57	.52	.47	.45
6.0	.58	.49	.43	.57	.49	.43	.55	.48	.43	.54	.47	.42	.52	.46	.42	.40
7.0	.53	.44	.38	.52	.44	.38	.50	.43	.38	.49	.42	.37	.48	.42	.37	.35
8.0	.48	.40	.34	.48	.40	.34	.46	.39	.34	.45	.38	.34	.44	.38	.33	.31
9.0	.44	.36	.31	.44	.36	.31	.43	.35	.30	.41	.35	.30	.40	.35	.30	.28
10.0	.41	.33	.28	.40	.33	.28	.39	.32	.28	.38	.32	.28	.38	.32	.27	.26



C Range: 0 - 360DEG
 C Interval: 30.0DEG
 Test Speed: HIGH
 Temperature:25.3°C
 Operators:DAMIN
 Test Date:2026-02-03

γ Range: 0 - 90DEG
 γ Interval: 5.0DEG
 Test System:EVERFINE GO-2000B_V1 SYSTEM V2.00.488
 Humidity:65.0%
 Test Distance:6.144m [K=1.0000]
 Remarks:

WEC AND CCEC

Test:U:121.03V I:0.0949A P:11.369W PF:0.9898 Freq:60.00Hz Lamp Flux:959.758x1 lm		
NAME: LS-SMC-7-C28-12W-5CCT-WH	TYPE:	WEIGHT:
SPEC.:	DIM.:	SERIAL No.: 1#30K
MFR.: YOURZOR	SUR.: 0.154	Shielding Angle:

ρ_{CC}	80%			70%			50%			30%			10%			0
ρ_w	50%	30%	10%	50%	30%	10%	50%	30%	10%	50%	30%	10%	50%	30%	10%	0
ρ_{fc}	20%			20%			20%			20%			20%			0
RCR	RCR:Room Cavity Ratio						Wall Exitance Coefficients (WEC)									
0.0																
1.0	.289	.164	.052	.282	.161	.051	.269	.154	.049	.257	.148	.048	.246	.142	.046	
2.0	.277	.152	.047	.271	.149	.046	.259	.144	.045	.248	.139	.044	.239	.135	.043	
3.0	.259	.138	.041	.253	.136	.041	.243	.132	.040	.234	.128	.039	.225	.125	.039	
4.0	.241	.125	.037	.236	.123	.036	.227	.120	.036	.218	.117	.035	.210	.114	.035	
5.0	.224	.114	.033	.219	.113	.033	.211	.110	.032	.204	.108	.032	.197	.105	.032	
6.0	.208	.104	.030	.204	.103	.030	.197	.101	.029	.191	.099	.029	.184	.097	.029	
7.0	.194	.096	.027	.191	.095	.027	.185	.093	.027	.179	.092	.027	.173	.090	.026	
8.0	.182	.089	.025	.179	.088	.025	.173	.087	.025	.168	.085	.025	.163	.084	.024	
9.0	.171	.083	.023	.168	.082	.023	.163	.081	.023	.158	.079	.023	.154	.078	.023	
10.0	.161	.077	.021	.159	.077	.021	.154	.075	.021	.150	.074	.021	.145	.073	.021	

ρ_{CC}	80%			70%			50%			30%			10%			0
ρ_w	50%	30%	10%	50%	30%	10%	50%	30%	10%	50%	30%	10%	50%	30%	10%	0
ρ_{fc}	20%			20%			20%			20%			20%			0
RCR	RCR:Room Cavity Ratio						Ceiling Cavity Exitance Coefficients (CCEC)									
0.0	.190	.190	.190	.163	.163	.163	.111	.111	.111	.064	.064	.064	.020	.020	.020	
1.0	.179	.156	.136	.153	.134	.117	.105	.092	.081	.060	.053	.047	.019	.017	.015	
2.0	.170	.132	.100	.146	.114	.086	.100	.079	.060	.058	.046	.035	.018	.015	.011	
3.0	.162	.114	.076	.139	.099	.066	.096	.068	.046	.055	.040	.027	.018	.013	.009	
4.0	.155	.101	.060	.133	.087	.052	.091	.061	.036	.053	.036	.022	.017	.012	.007	
5.0	.147	.090	.048	.127	.078	.042	.087	.055	.030	.051	.032	.018	.016	.010	.006	
6.0	.140	.082	.040	.121	.071	.035	.083	.050	.025	.048	.029	.015	.016	.010	.005	
7.0	.134	.075	.034	.115	.065	.029	.079	.046	.021	.046	.027	.012	.015	.009	.004	
8.0	.127	.069	.029	.110	.060	.025	.076	.042	.018	.044	.025	.011	.014	.008	.004	
9.0	.122	.064	.026	.105	.056	.022	.073	.039	.016	.042	.023	.009	.014	.008	.003	
10.0	.116	.060	.023	.100	.052	.020	.069	.037	.014	.040	.022	.008	.013	.007	.003	

C Range: 0 - 360DEG
 C Interval: 30.0DEG
 Test Speed: HIGH
 Temperature:25.3°C
 Operators:DAMIN
 Test Date:2026-02-03

γ Range: 0 - 90DEG
 γ Interval: 5.0DEG
 Test System:EVERFINE GO-2000B_V1 SYSTEM V2.00.488
 Humidity:65.0%
 Test Distance:6.144m [K=1.0000]
 Remarks:

UGR(Unified Glare Rating) Table

Test:U:121.03V I:0.0949A P:11.369W PF:0.9898 Freq:60.00Hz Lamp Flux:959.758x1 lm		
NAME: LS-SMC-7-C28-12W-5CCT-WH	TYPE:	WEIGHT:
SPEC.:	DIM.:	SERIAL No.: 1#30K
MFR.: YOURZOR	SUR.: 0.154	Shielding Angle:

ceiling/cavity	0.7	0.7	0.5	0.5	0.3	0.7	0.7	0.5	0.5	0.3
walls	0.5	0.3	0.5	0.3	0.3	0.5	0.3	0.5	0.3	0.3
working plane	0.2	0.2	0.2	0.2	0.2	0.2	0.2	0.2	0.2	0.2
Room dimensions	Viewed crosswise					Viewed endwise				
x = 2H y = 2H	21.7	23.2	22.0	23.4	23.6	22.0	23.5	22.3	23.7	23.9
3H	22.6	24.0	22.9	24.2	24.5	23.1	24.5	23.4	24.7	24.9
4H	22.8	24.1	23.1	24.3	24.6	23.4	24.7	23.7	24.9	25.2
6H	22.7	23.9	23.1	24.2	24.5	23.4	24.6	23.7	24.9	25.2
8H	22.7	23.9	23.0	24.1	24.4	23.4	24.5	23.7	24.8	25.1
12H	22.6	23.8	23.0	24.1	24.4	23.3	24.4	23.7	24.7	25.0
4H 2H	22.2	23.5	22.5	23.7	24.0	22.4	23.7	22.7	24.0	24.2
3H	23.2	24.3	23.5	24.6	24.9	23.6	24.7	24.0	25.0	25.3
4H	23.4	24.4	23.7	24.7	25.0	23.9	24.9	24.3	25.3	25.6
6H	23.3	24.2	23.7	24.6	25.0	24.0	24.9	24.4	25.2	25.6
8H	23.3	24.1	23.7	24.5	24.9	23.9	24.8	24.3	25.1	25.5
12H	23.3	24.0	23.7	24.4	24.8	23.9	24.7	24.3	25.1	25.5
8H 4H	23.4	24.2	23.8	24.6	25.0	23.9	24.7	24.3	25.1	25.5
6H	23.4	24.1	23.8	24.5	24.9	24.0	24.7	24.4	25.1	25.5
8H	23.3	24.0	23.8	24.4	24.8	24.0	24.6	24.4	25.0	25.4
12H	23.3	23.8	23.8	24.3	24.8	23.9	24.5	24.4	24.9	25.4
12H 4H	23.3	24.1	23.8	24.5	24.9	23.9	24.6	24.3	25.0	25.4
6H	23.3	24.0	23.8	24.4	24.8	23.9	24.5	24.4	25.0	25.4
8H	23.3	23.8	23.8	24.3	24.8	23.9	24.5	24.4	24.9	25.4
Variations with the observer position at spacings(CIE Pub.117):										
S = 1.0H	+ 0.2 / - 0.3					+ 0.2 / - 0.2				
1.5H	+ 0.2 / - 0.5					+ 0.2 / - 0.4				
2.0H	+ 0.7 / - 0.8					+ 0.7 / - 0.8				

CIE Pub.117, 959.8 lm Total Lamp Luminous Flux Correct (8log(F/F0) = -0.1)
Area: 0.0187 m2

C Range: 0 - 360DEG
C Interval: 30.0DEG
Test Speed: HIGH
Temperature:25.3°C
Operators:DAMIN
Test Date:2026-02-03

γ Range: 0 - 90DEG
γ Interval: 5.0DEG
Test System:EVERFINE GO-2000B_V1 SYSTEM V2.00.488
Humidity:65.0%
Test Distance:6.144m [K=1.0000]
Remarks:

UTILIZATION FACTORS TABLE

Test:U:121.03V I:0.0949A P:11.369W PF:0.9898 Freq:60.00Hz Lamp Flux:959.758x1 lm		
NAME: LS-SMC-7-C28-12W-5CCT-WH	TYPE:	WEIGHT:
SPEC.:	DIM.:	SERIAL No.: 1#30K
MFR.: YOURZOR	SUR.: 0.154	Shielding Angle:

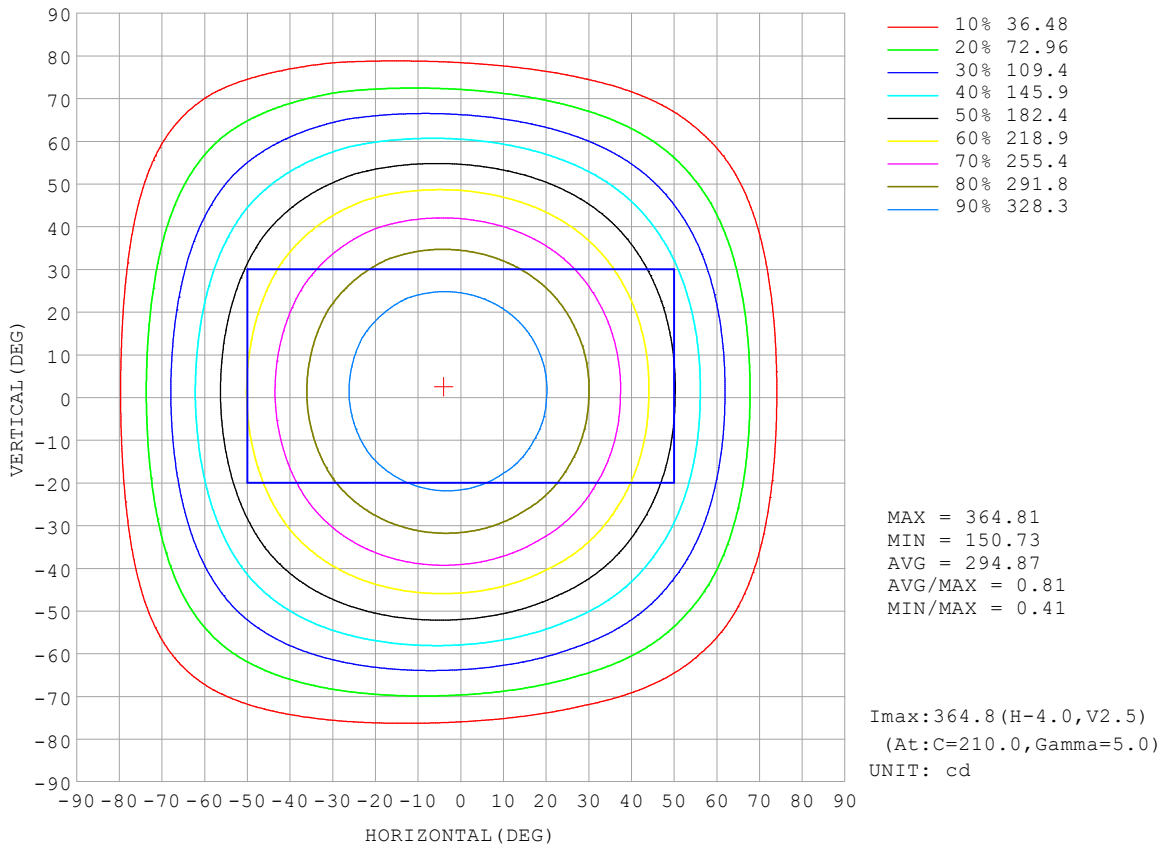
REFLECTANCE										
Ceiling	0.8	0.8	0.8	0.7	0.7	0.7	0.5	0.5	0.5	0
Walls	0.7	0.5	0.3	0.7	0.5	0.3	0.7	0.5	0.3	0
Working plane	0.2	0.2	0.2	0.2	0.2	0.2	0.2	0.2	0.2	0
ROOM INDEX	UTILIZATION FACTORS (PERCENT) $k(RI) \times RCR = 5$									
k = 0.60	59	48	41	58	48	41	57	47	41	34
0.80	69	58	51	68	58	51	67	57	50	44
1.00	78	67	60	77	67	60	74	68	59	52
1.25	85	75	68	83	74	68	81	73	67	60
1.50	90	80	74	88	80	73	85	78	72	65
2.00	96	88	82	95	87	82	91	85	80	72
2.50	100	93	87	98	91	86	94	89	84	76
3.00	103	97	92	101	95	91	97	93	89	80
4.00	107	102	98	105	100	96	101	97	93	85
5.00	109	105	101	107	103	100	103	99	97	88
ROOM INDEX	UF(total)									Direct
According to DIN EN 13032-2 2004			Suspended				SHRNOM = 1.25			

C Range: 0 - 360DEG
 C Interval: 30.0DEG
 Test Speed: HIGH
 Temperature:25.3°C
 Operators:DAMIN
 Test Date:2026-02-03

γ Range: 0 - 90DEG
 γ Interval: 5.0DEG
 Test System:EVERFINE GO-2000B_V1 SYSTEM V2.00.488
 Humidity:65.0%
 Test Distance:6.144m [K=1.0000]
 Remarks:

ISOCANDELA DIAGRAM

Test:U:121.03V I:0.0949A P:11.369W PF:0.9898 Freq:60.00Hz Lamp Flux:959.758x1 lm		
NAME: LS-SMC-7-C28-12W-5CCT-WH	TYPE:	WEIGHT:
SPEC.:	DIM.:	SERIAL No.: 1#30K
MFR.: YOURZOR	SUR.: 0.154	Shielding Angle:

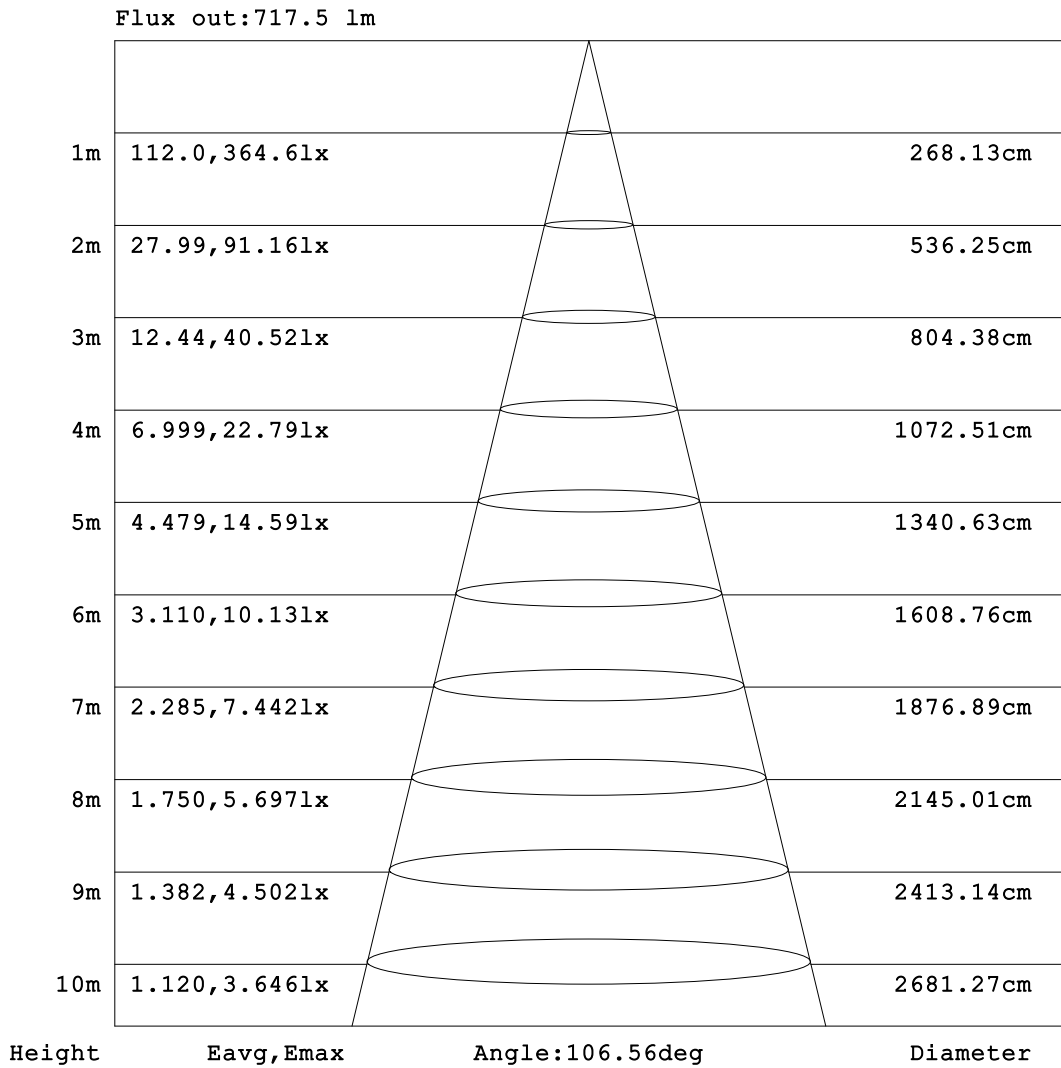


C Range: 0 - 360DEG
C Interval: 30.0DEG
Test Speed: HIGH
Temperature:25.3°C
Operators:DAMIN
Test Date:2026-02-03

γ Range: 0 - 90DEG
γ Interval: 5.0DEG
Test System:EVERFINE GO-2000B_V1 SYSTEM V2.00.488
Humidity:65.0%
Test Distance:6.144m [K=1.0000]
Remarks:

AAI Figure

Test:U:121.03V I:0.0949A P:11.369W PF:0.9898 Freq:60.00Hz Lamp Flux:959.758x1 lm		
NAME: LS-SMC-7-C28-12W-5CCT-WH	TYPE:	WEIGHT:
SPEC.:	DIM.:	SERIAL No.: 1#30K
MFR.: YOURZOR	SUR.: 0.154	Shielding Angle:



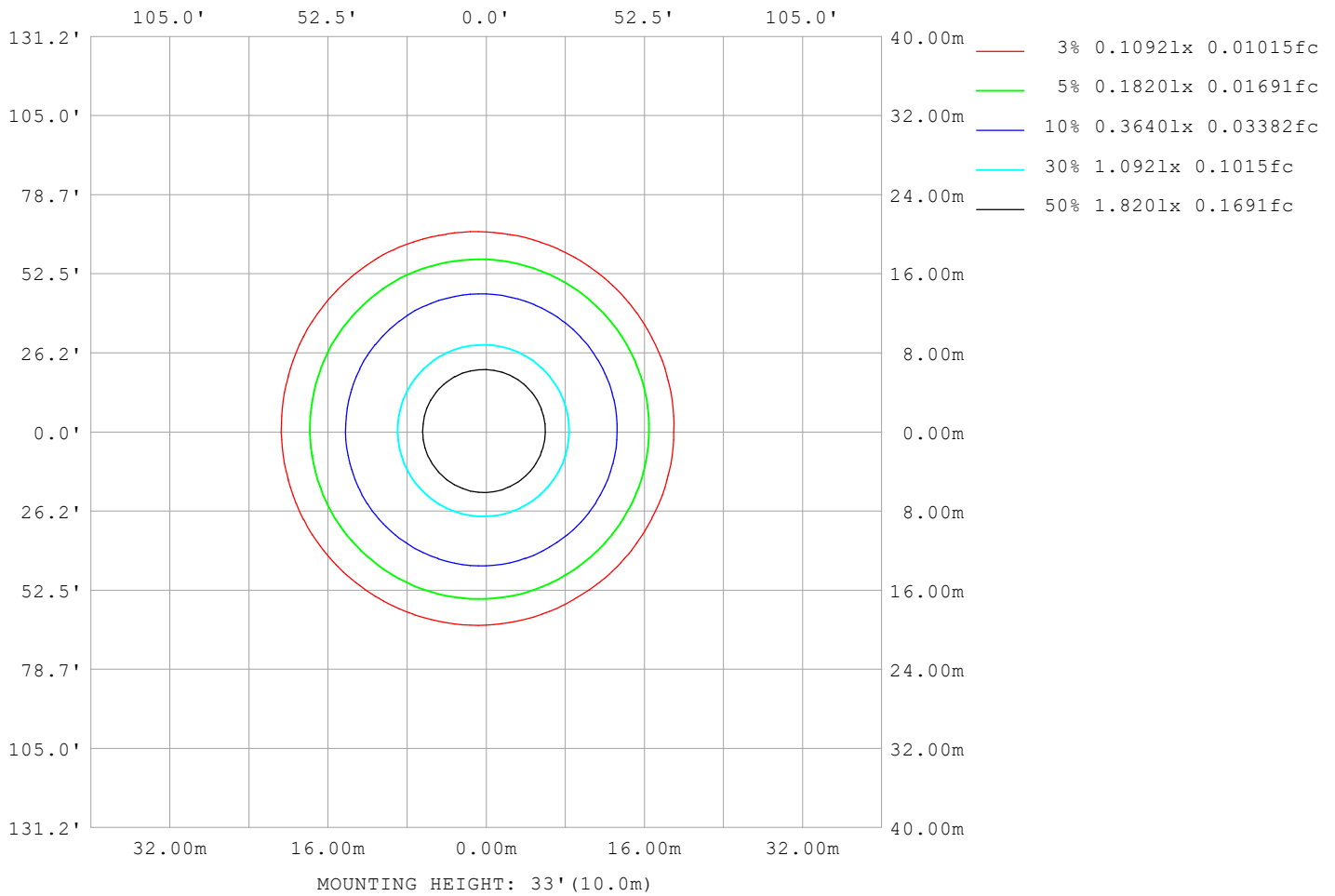
Note: The Curves indicate the illuminated area and the average illumination when the luminaire is at different distance.

C Range: 0 - 360DEG
 C Interval: 30.0DEG
 Test Speed: HIGH
 Temperature: 25.3°C
 Operators: DAMIN
 Test Date: 2026-02-03

γ Range: 0 - 90DEG
 γ Interval: 5.0DEG
 Test System: EVERFINE GO-2000B_V1 SYSTEM V2.00.488
 Humidity: 65.0%
 Test Distance: 6.144m [K=1.0000]
 Remarks:

ISOLUX DIAGRAM

Test:U:121.03V I:0.0949A P:11.369W PF:0.9898 Freq:60.00Hz Lamp Flux:959.758x1 lm		
NAME: LS-SMC-7-C28-12W-5CCT-WH	TYPE:	WEIGHT:
SPEC.:	DIM.:	SERIAL No.: 1#30K
MFR.: YOURZOR	SUR.: 0.154	Shielding Angle:



C Range: 0 - 360DEG
 C Interval: 30.0DEG
 Test Speed: HIGH
 Temperature:25.3°C
 Operators:DAMIN
 Test Date:2026-02-03

γ Range: 0 - 90DEG
 γ Interval: 5.0DEG
 Test System:EVERFINE GO-2000B_V1 SYSTEM V2.00.488
 Humidity:65.0%
 Test Distance:6.144m [K=1.0000]
 Remarks:

LED Avg.L Report

Test:U:121.03V I:0.0949A P:11.369W PF:0.9898 Freq:60.00Hz Lamp Flux:959.758x1 lm		
NAME: LS-SMC-7-C28-12W-5CCT-WH	TYPE:	WEIGHT:
SPEC.:	DIM.:	SERIAL No.: 1#30K
MFR.: YOURZOR	SUR.: 0.154	Shielding Angle:

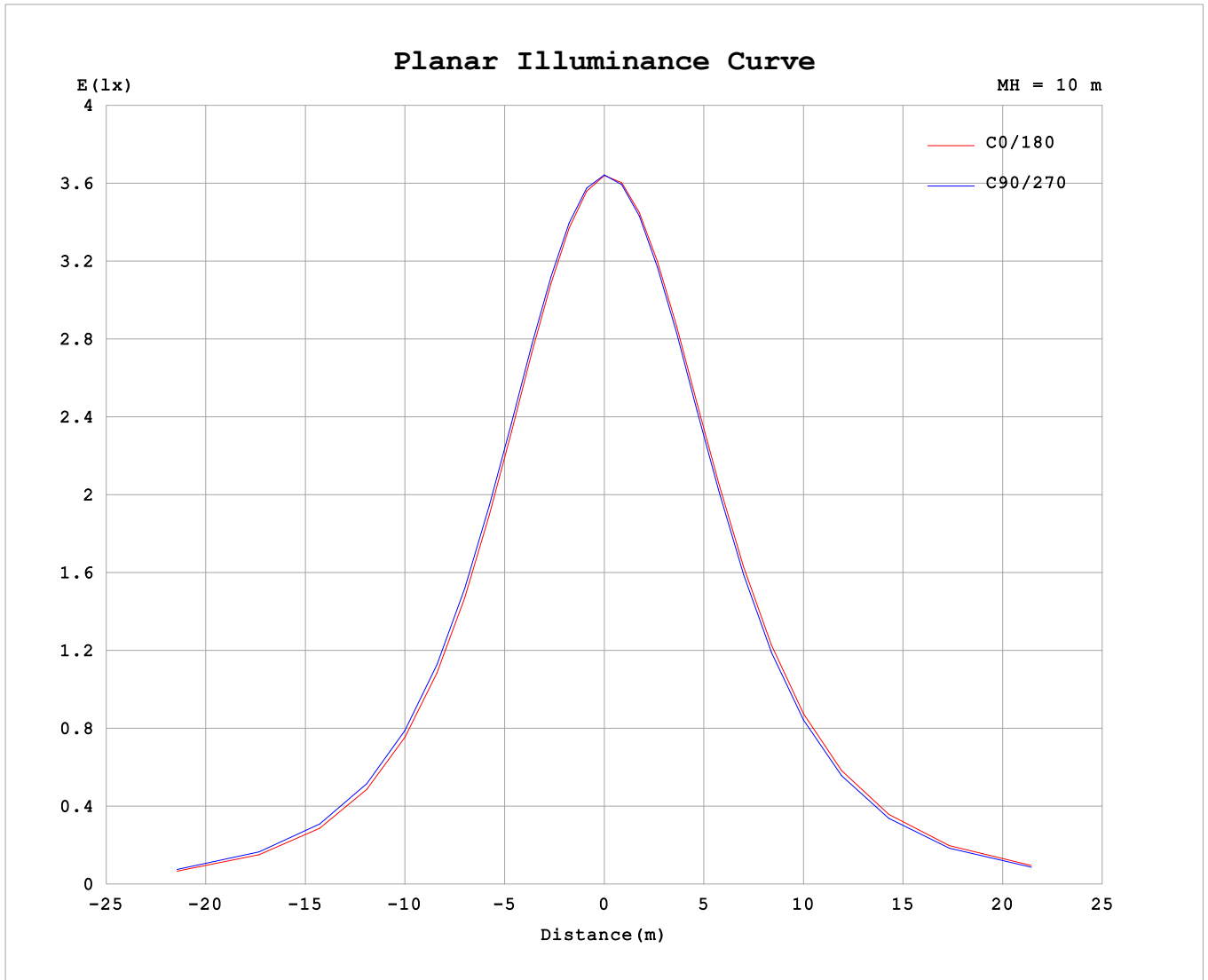
AvgL	cd/m2
L_0~180 (65) av	13806
L_0~180 (75) av	9884
L_0~180 (85) av	3749
L_90~270 (65) av	13837
L_90~270 (75) av	10030
L_90~270 (85) av	3585
L_45 (65) av	13864
L_45 (75) av	9976
L_45 (85) av	4041

Standard: GB/T 29293-2012

C Range: 0 - 360DEG
 C Interval: 30.0DEG
 Test Speed: HIGH
 Temperature:25.3°C
 Operators:DAMIN
 Test Date:2026-02-03

γ Range: 0 - 90DEG
 γ Interval: 5.0DEG
 Test System:EVERFINE GO-2000B_V1 SYSTEM V2.00.488
 Humidity:65.0%
 Test Distance:6.144m [K=1.0000]
 Remarks:

Planar Illuminance Curve



C Range: 0 - 360DEG
 C Interval: 30.0DEG
 Test Speed: HIGH
 Temperature: 25.3°C
 Operators: DAMIN
 Test Date: 2026-02-03

γ Range: 0 - 90DEG
 γ Interval: 5.0DEG
 Test System: EVERFINE GO-2000B_V1 SYSTEM V2.00.488
 Humidity: 65.0%
 Test Distance: 6.144m [K=1.0000]
 Remarks:

