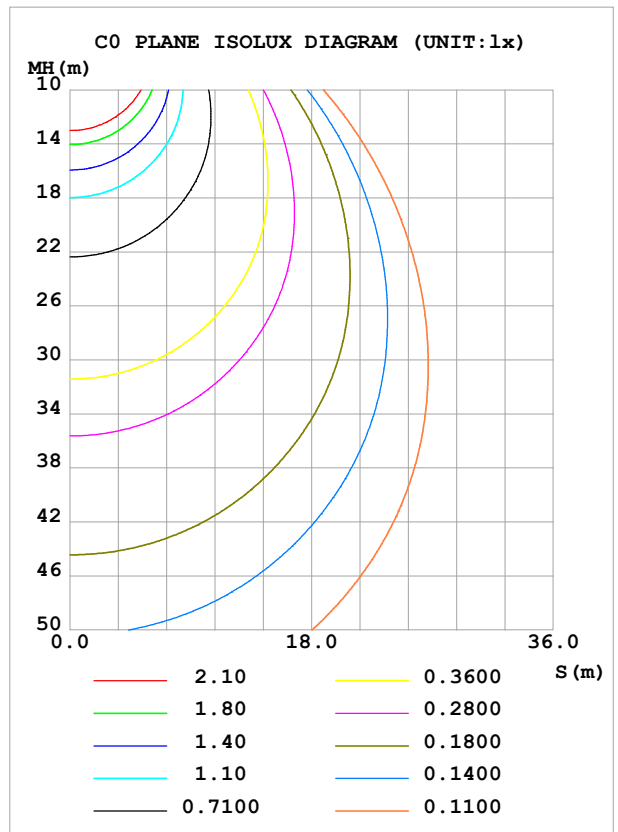
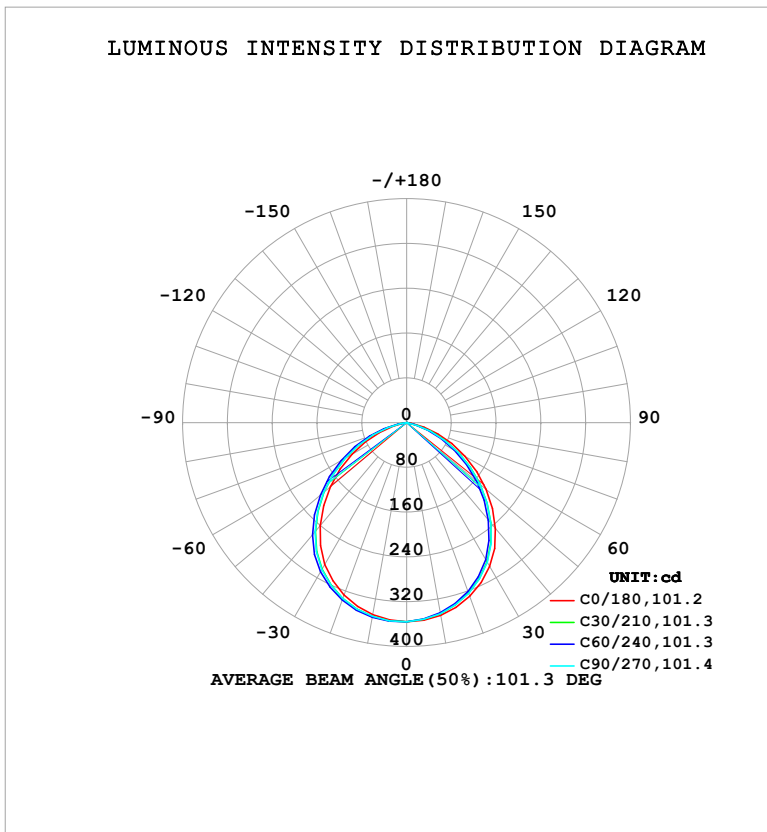


LUMINAIRE PHOTOMETRIC TEST REPORT

Test:U:120.99V I:0.0960A P:11.508W PF:0.9906 Freq:60.00Hz Lamp Flux:858.704x1 lm		
NAME: LS-SMC-5-C32-11W-5CCT-WH	TYPE:	WEIGHT:
SPEC.:	DIM.:	SERIAL No.: 1#30K
MFR.: YOURZOR	SUR.: 0.110	Shielding Angle:

DATA OF LAMP		PHOTOMETRIC DATA			
MSBEMC-5-C32-11W-5CCT-WH-30K		Imax (cd)	356.1	S/MH (C0/180)	1.23
NOMINAL POWER (W)	11	LOR (%)	100.0	S/MH (C90/270)	1.26
RATED VOLTAGE (V)	120	TOTAL FLUX (lm)	858.70	η UP, DN (C0-180)	0.0,48.8
NOMINAL FLUX (lm)	858.704	CIE CLASS	DIRECT	η UP, DN (C180-360)	0.0,51.2
LAMPS INSIDE	1	η up (%)	0.0	CIBSE SHR NOM	1.25
TEST VOLTAGE (V)	120	η down (%)	100.0	CIBSE SHR MAX	1.35



C Range: 0 - 360DEG
C Interval: 30.0DEG
Test Speed: HIGH
Temperature:25.3°C
Operators:DAMIN
Test Date:2026-02-02

γ Range: 0 - 90DEG
 γ Interval: 5.0DEG
Test System:EVERFINE GO-2000B_V1 SYSTEM V2.00.488
Humidity:65.0%
Test Distance:6.144m [K=1.0000]
Remarks:

ZONAL FLUX DIAGRAM

ZONAL FLUX DIAGRAM:

γ	C0	C45	C90	C135	C180	C225	C270	C315	γ	Φ zone	Φ total	%lum,lamp
10	349.5	345.7	346.5	349.3	348.3	352.4	351.4	348.5	0- 10	33.62	33.62	3.92,3.92
20	330.0	322.3	324.2	329.7	327.6	335.8	334.3	328.1	10- 20	96.11	129.7	15.1,15.1
30	296.9	285.3	288.0	296.5	292.8	305.0	303.0	293.4	20- 30	144.5	274.2	31.9,31.9
40	247.1	230.7	234.4	246.2	240.4	258.0	255.0	241.3	30- 40	169.6	443.7	51.7,51.7
50	185.5	167.4	171.5	184.6	178.1	197.0	193.5	178.1	40- 50	164.8	608.5	70.9,70.9
60	120.7	102.5	106.0	119.6	112.8	131.0	127.2	112.0	50- 60	133.3	741.8	86.4,86.4
70	59.29	43.08	45.74	57.96	51.81	67.68	63.98	50.60	60- 70	84.28	826.1	96.2,96.2
80	8.700	0.6203	0.5551	6.368	3.123	14.14	11.28	2.700	70- 80	30.71	856.8	99.8,99.8
90	0.3044	0.3967	0.3911	0.3068	0.4105	0.3562	0.3632	0.4045	80- 90	1.892	858.7	100,100
100									90-100			
110									100-110			
120									110-120			
130									120-130			
140									130-140			
150									140-150			
160									150-160			
170									160-170			
180									170-180			
DEG	LUMINOUS INTENSITY:cd									UNIT:lm		

Conical surface Flux(90deg): 528.55 lm

%lum = 61.6%

%lamp = 61.6%

Conical surface Flux(130deg): 790.73 lm

%lum = 92.1%

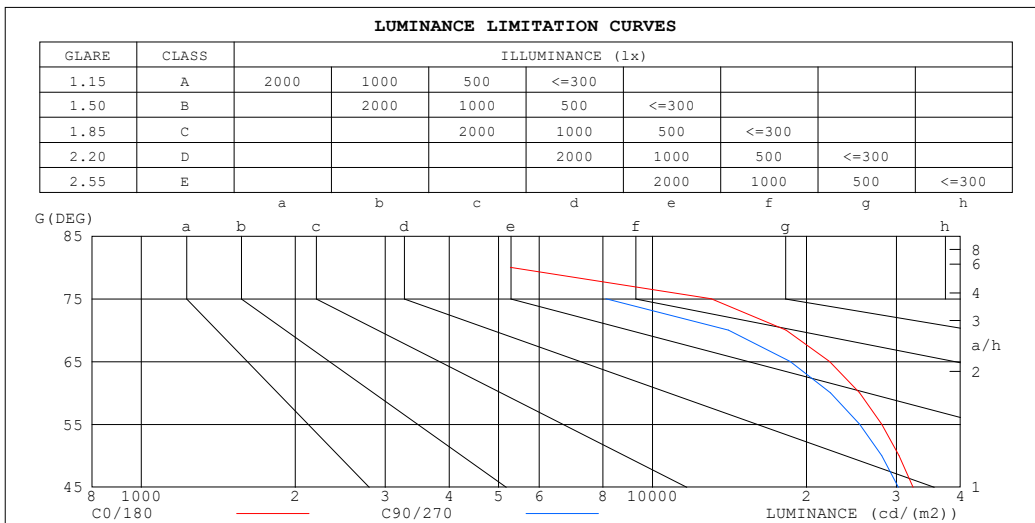
%lamp = 92.1%

C Range: 0 - 360DEG
 C Interval: 30.0DEG
 Test Speed: HIGH
 Temperature:25.3°C
 Operators:DAMIN
 Test Date:2026-02-02

γ Range: 0 - 90DEG
 γ Interval: 5.0DEG
 Test System:EVERFINE GO-2000B_V1 SYSTEM V2.00.488
 Humidity:65.0%
 Test Distance:6.144m [K=1.0000]
 Remarks:

LUMINANCE LIMITATION CURVES

Test:U:120.99V I:0.0960A P:11.508W PF:0.9906 Freq:60.00Hz Lamp Flux:858.704x1 lm		
NAME: LS-SMC-5-C32-11W-5CCT-WH	TYPE:	WEIGHT:
SPEC.:	DIM.:	SERIAL No.: 1#30K
MFR.: YOURZOR	SUR.: 0.110	Shielding Angle:



LUMINANCE cd/(m2)		
G (DEG)	C0/180	C90/270
85	345	361
80	5273	336
75	13016	8099
70	18245	14070
65	22196	18596
60	25410	22302
55	28072	25402
50	30368	28067
45	32337	30272

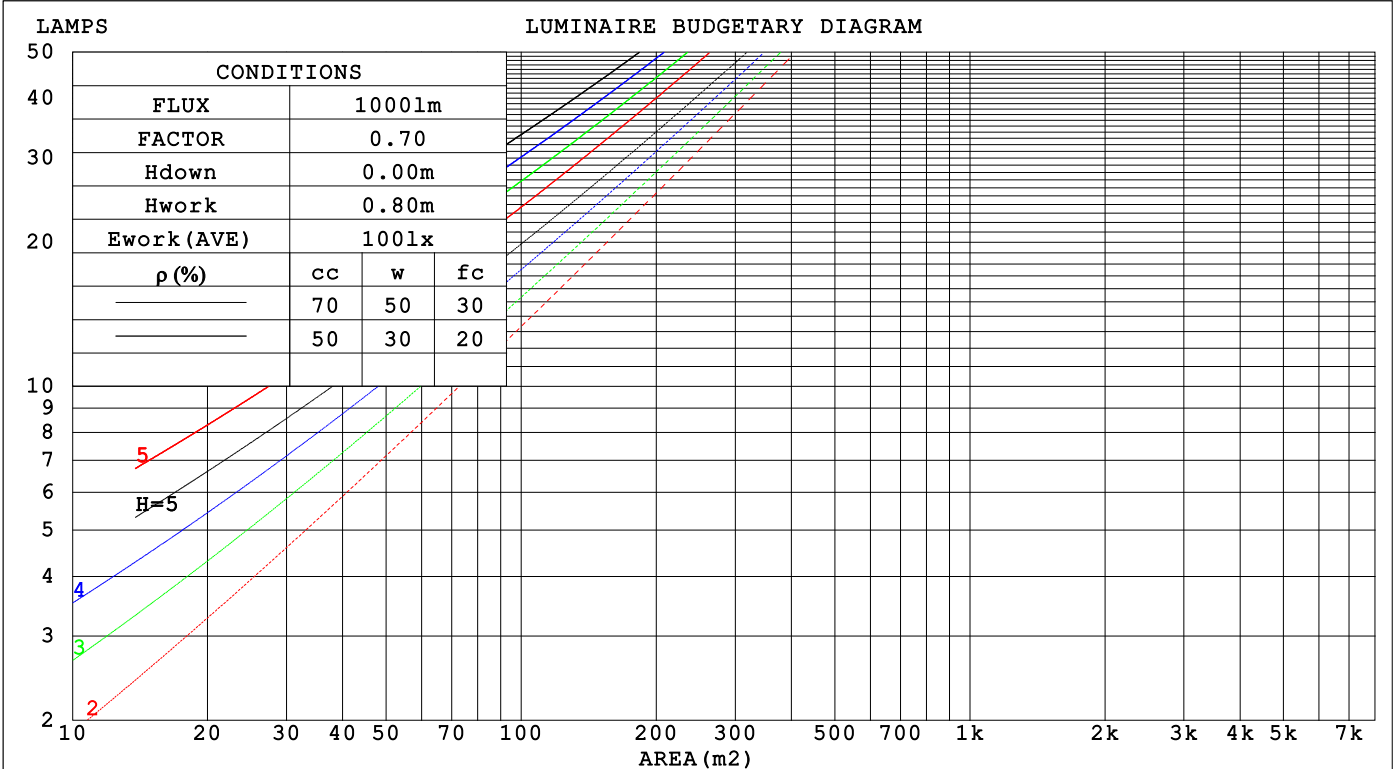
C Range: 0 - 360DEG
 C Interval: 30.0DEG
 Test Speed: HIGH
 Temperature:25.3°C
 Operators:DAMIN
 Test Date:2026-02-02

γ Range: 0 - 90DEG
 γ Interval: 5.0DEG
 Test System:EVERFINE GO-2000B_V1 SYSTEM V2.00.488
 Humidity:65.0%
 Test Distance:6.144m [K=1.0000]
 Remarks:

CU AND LUMINAIRE BUDGETARY ESTIMATE DIAGRAM

Test:U:120.99V I:0.0960A P:11.508W PF:0.9906 Freq:60.00Hz Lamp Flux:858.704x1 lm		
NAME: LS-SMC-5-C32-11W-5CCT-WH	TYPE:	WEIGHT:
SPEC.:	DIM.:	SERIAL No.: 1#30K
MFR.: YOURZOR	SUR.: 0.110	Shielding Angle:

ρcc	80%			70%			50%			30%			10%			0
	50%	30%	10%	50%	30%	10%	50%	30%	10%	50%	30%	10%	50%	30%	10%	
ρw	0															
ρfc	0															
RCR	RCR:Room Cavity Ratio Coefficients of Utilization(CU)															
0.0	1.19	1.19	1.19	1.16	1.16	1.16	1.11	1.11	1.11	1.06	1.06	1.06	1.02	1.02	1.02	.00
1.0	1.06	1.02	.99	1.04	1.01	.97	.00	.97	.94	.96	.94	.92	.92	.91	.89	.87
2.0	.94	.88	.83	.92	.86	.82	.88	.84	.80	.85	.81	.78	.82	.79	.76	.74
3.0	.83	.76	.70	.82	.75	.69	.79	.73	.68	.76	.71	.67	.74	.69	.66	.64
4.0	.74	.66	.60	.73	.65	.59	.70	.64	.59	.68	.62	.58	.66	.61	.57	.55
5.0	.67	.58	.52	.66	.58	.52	.63	.56	.51	.62	.55	.51	.60	.54	.50	.48
6.0	.60	.52	.46	.59	.51	.45	.58	.50	.45	.56	.50	.45	.54	.49	.44	.42
7.0	.55	.46	.41	.54	.46	.40	.52	.45	.40	.51	.45	.40	.50	.44	.40	.38
8.0	.50	.42	.36	.49	.42	.36	.48	.41	.36	.47	.40	.36	.46	.40	.36	.34
9.0	.46	.38	.33	.45	.38	.33	.44	.37	.33	.43	.37	.32	.42	.37	.32	.30
10.0	.43	.35	.30	.42	.35	.30	.41	.34	.30	.40	.34	.30	.39	.34	.29	.28



C Range: 0 - 360DEG
 C Interval: 30.0DEG
 Test Speed: HIGH
 Temperature:25.3°C
 Operators:DAMIN
 Test Date:2026-02-02

γ Range: 0 - 90DEG
 γ Interval: 5.0DEG
 Test System:EVERFINE GO-2000B_V1 SYSTEM V2.00.488
 Humidity:65.0%
 Test Distance:6.144m [K=1.0000]
 Remarks:

WEC AND CCEC

Test:U:120.99V I:0.0960A P:11.508W PF:0.9906 Freq:60.00Hz Lamp Flux:858.704x1 lm		
NAME: LS-SMC-5-C32-11W-5CCT-WH	TYPE:	WEIGHT:
SPEC.:	DIM.:	SERIAL No.: 1#30K
MFR.: YOURZOR	SUR.: 0.110	Shielding Angle:

ρ_{CC}	80%			70%			50%			30%			10%			0
ρ_w	50%	30%	10%	50%	30%	10%	50%	30%	10%	50%	30%	10%	50%	30%	10%	0
ρ_{fc}	20%			20%			20%			20%			20%			0
RCR	RCR:Room Cavity Ratio						Wall Exitance Coefficients (WEC)									
0.0																
1.0	.266	.151	.048	.259	.148	.047	.246	.141	.045	.234	.135	.043	.223	.129	.042	
2.0	.260	.142	.044	.254	.140	.043	.242	.135	.042	.232	.130	.041	.222	.126	.040	
3.0	.246	.131	.039	.240	.129	.039	.230	.125	.038	.221	.121	.037	.212	.118	.036	
4.0	.230	.120	.035	.225	.118	.035	.217	.115	.034	.208	.112	.034	.201	.109	.033	
5.0	.215	.110	.032	.211	.108	.032	.203	.106	.031	.196	.103	.031	.189	.101	.030	
6.0	.201	.101	.029	.198	.100	.029	.191	.098	.028	.184	.096	.028	.178	.094	.028	
7.0	.189	.093	.026	.186	.092	.026	.179	.091	.026	.173	.089	.026	.168	.087	.026	
8.0	.177	.087	.024	.174	.086	.024	.169	.084	.024	.163	.083	.024	.159	.081	.024	
9.0	.167	.081	.023	.164	.080	.022	.159	.079	.022	.155	.077	.022	.150	.076	.022	
10.0	.158	.076	.021	.155	.075	.021	.151	.074	.021	.146	.073	.021	.142	.072	.021	

ρ_{CC}	80%			70%			50%			30%			10%			0
ρ_w	50%	30%	10%	50%	30%	10%	50%	30%	10%	50%	30%	10%	50%	30%	10%	0
ρ_{fc}	20%			20%			20%			20%			20%			0
RCR	RCR:Room Cavity Ratio						Ceiling Cavity Exitance Coefficients (CCEC)									
0.0	.190	.190	.190	.163	.163	.163	.111	.111	.111	.064	.064	.064	.020	.020	.020	
1.0	.177	.157	.138	.152	.134	.119	.104	.092	.082	.060	.053	.048	.019	.017	.015	
2.0	.168	.132	.102	.144	.114	.088	.099	.079	.061	.057	.046	.036	.018	.015	.012	
3.0	.160	.114	.078	.137	.098	.067	.094	.068	.047	.054	.040	.028	.017	.013	.009	
4.0	.152	.101	.061	.131	.087	.053	.090	.061	.037	.052	.035	.022	.017	.012	.007	
5.0	.145	.090	.049	.124	.078	.043	.086	.054	.030	.050	.032	.018	.016	.010	.006	
6.0	.138	.082	.041	.119	.071	.036	.082	.049	.025	.048	.029	.015	.015	.010	.005	
7.0	.132	.075	.035	.113	.065	.030	.078	.045	.021	.045	.027	.013	.015	.009	.004	
8.0	.126	.069	.030	.108	.060	.026	.075	.042	.018	.044	.025	.011	.014	.008	.004	
9.0	.120	.064	.026	.103	.055	.023	.071	.039	.016	.042	.023	.010	.013	.008	.003	
10.0	.114	.060	.023	.099	.052	.020	.068	.036	.014	.040	.022	.009	.013	.007	.003	

C Range: 0 - 360DEG
 C Interval: 30.0DEG
 Test Speed: HIGH
 Temperature:25.3°C
 Operators:DAMIN
 Test Date:2026-02-02

γ Range: 0 - 90DEG
 γ Interval: 5.0DEG
 Test System:EVERFINE GO-2000B_V1 SYSTEM V2.00.488
 Humidity:65.0%
 Test Distance:6.144m [K=1.0000]
 Remarks:

UGR(Unified Glare Rating) Table

Test:U:120.99V I:0.0960A P:11.508W PF:0.9906 Freq:60.00Hz										
Lamp Flux:858.704x1 lm										
NAME: LS-SMC-5-C32-11W-5CCT-WH					TYPE:			WEIGHT:		
SPEC.:					DIM.:			SERIAL No.: 1#30K		
MFR.: YOURZOR					SUR.: 0.110			Shielding Angle:		
ceiling/cavity	0.7	0.7	0.5	0.5	0.3	0.7	0.7	0.5	0.5	0.3
walls	0.5	0.3	0.5	0.3	0.3	0.5	0.3	0.5	0.3	0.3
working plane	0.2	0.2	0.2	0.2	0.2	0.2	0.2	0.2	0.2	0.2
Room dimensions	Viewed crosswise					Viewed endwise				
x = 2H y = 2H	24.5	25.9	24.7	26.1	26.3	24.0	25.4	24.2	25.6	25.8
3H	25.4	26.7	25.6	26.9	27.1	24.6	25.9	24.9	26.2	26.4
4H	25.5	26.8	25.8	27.0	27.3	24.7	25.9	25.0	26.1	26.4
6H	25.5	26.6	25.8	26.9	27.2	24.6	25.7	24.9	26.0	26.3
8H	25.4	26.5	25.7	26.8	27.1	24.5	25.6	24.8	25.9	26.2
12H	25.4	26.4	25.7	26.7	27.0	24.5	25.5	24.8	25.8	26.1
4H 2H	24.7	26.0	25.0	26.2	26.5	24.3	25.6	24.6	25.8	26.1
3H	25.7	26.8	26.0	27.1	27.4	25.0	26.1	25.4	26.4	26.7
4H	25.9	26.9	26.2	27.2	27.5	25.1	26.0	25.4	26.4	26.7
6H	25.8	26.7	26.2	27.0	27.4	25.0	25.8	25.4	26.2	26.5
8H	25.8	26.6	26.2	26.9	27.3	24.9	25.7	25.3	26.1	26.5
12H	25.7	26.5	26.2	26.9	27.3	24.9	25.6	25.3	26.0	26.4
8H 4H	25.8	26.6	26.2	27.0	27.3	25.0	25.8	25.4	26.2	26.6
6H	25.8	26.4	26.2	26.8	27.2	24.9	25.6	25.4	26.0	26.4
8H	25.7	26.3	26.2	26.7	27.2	24.9	25.5	25.3	25.9	26.3
12H	25.7	26.2	26.2	26.6	27.1	24.8	25.3	25.3	25.8	26.3
12H 4H	25.8	26.5	26.2	26.9	27.3	25.0	25.7	25.4	26.1	26.5
6H	25.7	26.3	26.2	26.7	27.2	24.9	25.5	25.3	25.9	26.3
8H	25.7	26.2	26.2	26.6	27.1	24.8	25.3	25.3	25.8	26.3
Variations with the observer position at spacings(CIE Pub.117):										
S = 1.0H	+ 0.2 / - 0.3					+ 0.3 / - 0.4				
1.5H	+ 0.3 / - 0.4					+ 0.2 / - 0.3				
2.0H	+ 0.9 / - 1.3					+ 0.9 / - 1.2				

CIE Pub.117, 858.7 lm Total Lamp Luminous Flux Correct (8log(F/F0) = -0.5)
 Area: 0.0095 m2

C Range: 0 - 360DEG	γ Range: 0 - 90DEG
C Interval: 30.0DEG	γ Interval: 5.0DEG
Test Speed: HIGH	Test System:EVERFINE GO-2000B_V1 SYSTEM V2.00.488
Temperature:25.3°C	Humidity:65.0%
Operators:DAMIN	Test Distance:6.144m [K=1.0000]
Test Date:2026-02-02	Remarks:

UTILIZATION FACTORS TABLE

Test:U:120.99V I:0.0960A P:11.508W PF:0.9906 Freq:60.00Hz Lamp Flux:858.704x1 lm		
NAME: LS-SMC-5-C32-11W-5CCT-WH	TYPE:	WEIGHT:
SPEC.:	DIM.:	SERIAL No.: 1#30K
MFR.: YOURZOR	SUR.: 0.110	Shielding Angle:

REFLECTANCE										
Ceiling	0.8	0.8	0.8	0.7	0.7	0.7	0.5	0.5	0.5	0
Walls	0.7	0.5	0.3	0.7	0.5	0.3	0.7	0.5	0.3	0
Working plane	0.2	0.2	0.2	0.2	0.2	0.2	0.2	0.2	0.2	0
ROOM INDEX	UTILIZATION FACTORS (PERCENT) $k(RI) \times RCR = 5$									
k = 0.60	61	50	44	61	50	44	59	50	43	37
0.80	72	61	54	71	60	54	69	60	53	47
1.00	80	70	63	79	69	63	77	71	63	56
1.25	87	78	71	86	77	71	83	76	70	63
1.50	92	83	77	90	82	76	87	80	75	68
2.00	98	91	85	97	90	84	93	87	83	76
2.50	102	95	90	100	94	89	96	91	87	79
3.00	105	99	94	103	97	93	99	94	91	83
4.00	108	103	99	106	102	98	102	98	95	87
5.00	110	106	103	108	104	101	104	101	98	89
ROOM INDEX	UF(total)									Direct
According to DIN EN 13032-2 2004			Suspended				SHRNOM = 1.25			

C Range: 0 - 360DEG
 C Interval: 30.0DEG
 Test Speed: HIGH
 Temperature:25.3°C
 Operators:DAMIN
 Test Date:2026-02-02

γ Range: 0 - 90DEG
 γ Interval: 5.0DEG
 Test System:EVERFINE GO-2000B_V1 SYSTEM V2.00.488
 Humidity:65.0%
 Test Distance:6.144m [K=1.0000]
 Remarks:

ISOCANDELA DIAGRAM

Test:U:120.99V I:0.0960A P:11.508W PF:0.9906 Freq:60.00Hz Lamp Flux:858.704x1 lm		
NAME: LS-SMC-5-C32-11W-5CCT-WH	TYPE:	WEIGHT:
SPEC.:	DIM.:	SERIAL No.: 1#30K
MFR.: YOURZOR	SUR.: 0.110	Shielding Angle:

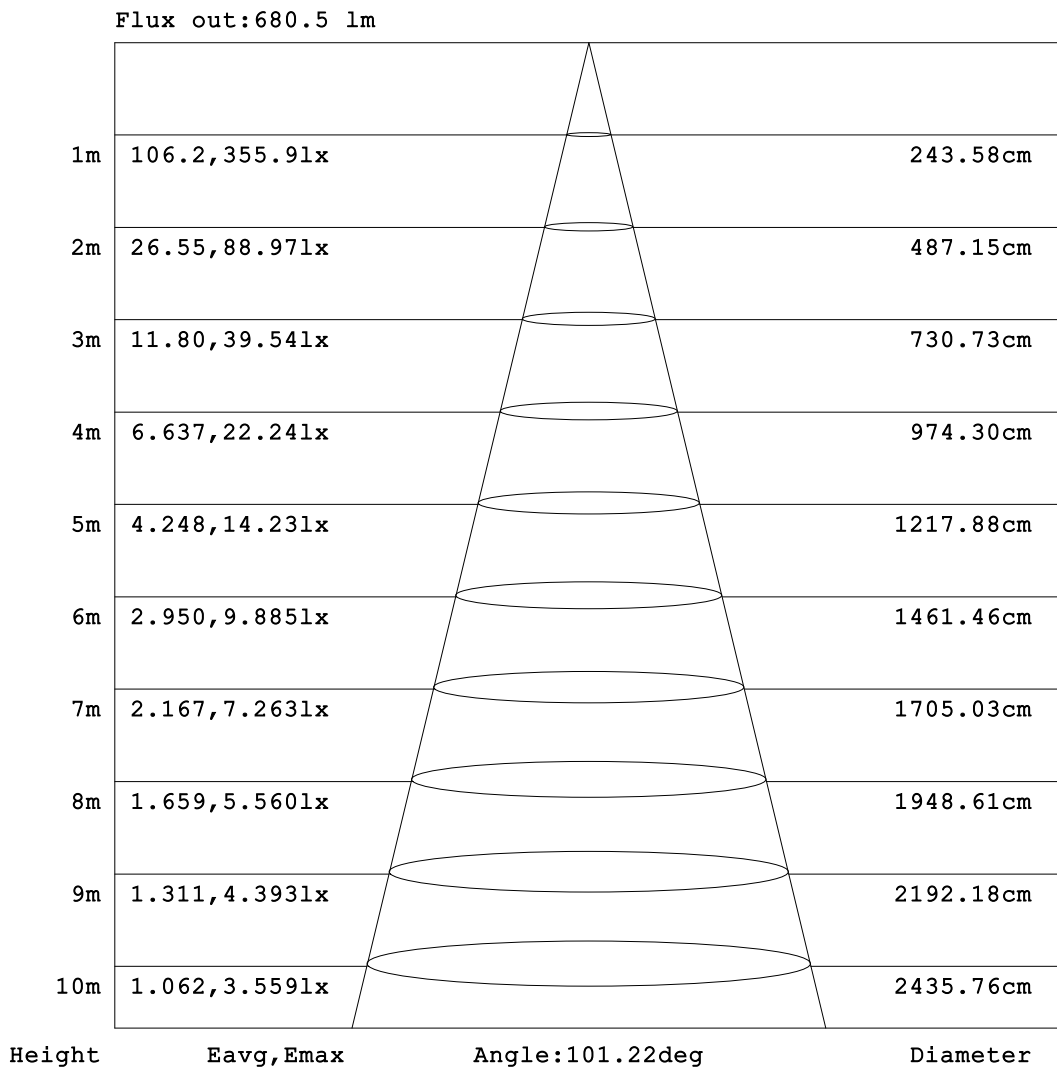


C Range: 0 - 360DEG
 C Interval: 30.0DEG
 Test Speed: HIGH
 Temperature:25.3°C
 Operators:DAMIN
 Test Date:2026-02-02

γ Range: 0 - 90DEG
 γ Interval: 5.0DEG
 Test System:EVERFINE GO-2000B_V1 SYSTEM V2.00.488
 Humidity:65.0%
 Test Distance:6.144m [K=1.0000]
 Remarks:

AAI Figure

Test:U:120.99V I:0.0960A P:11.508W PF:0.9906 Freq:60.00Hz Lamp Flux:858.704x1 lm		
NAME: LS-SMC-5-C32-11W-5CCT-WH	TYPE:	WEIGHT:
SPEC.:	DIM.:	SERIAL No.: 1#30K
MFR.: YOURZOR	SUR.: 0.110	Shielding Angle:



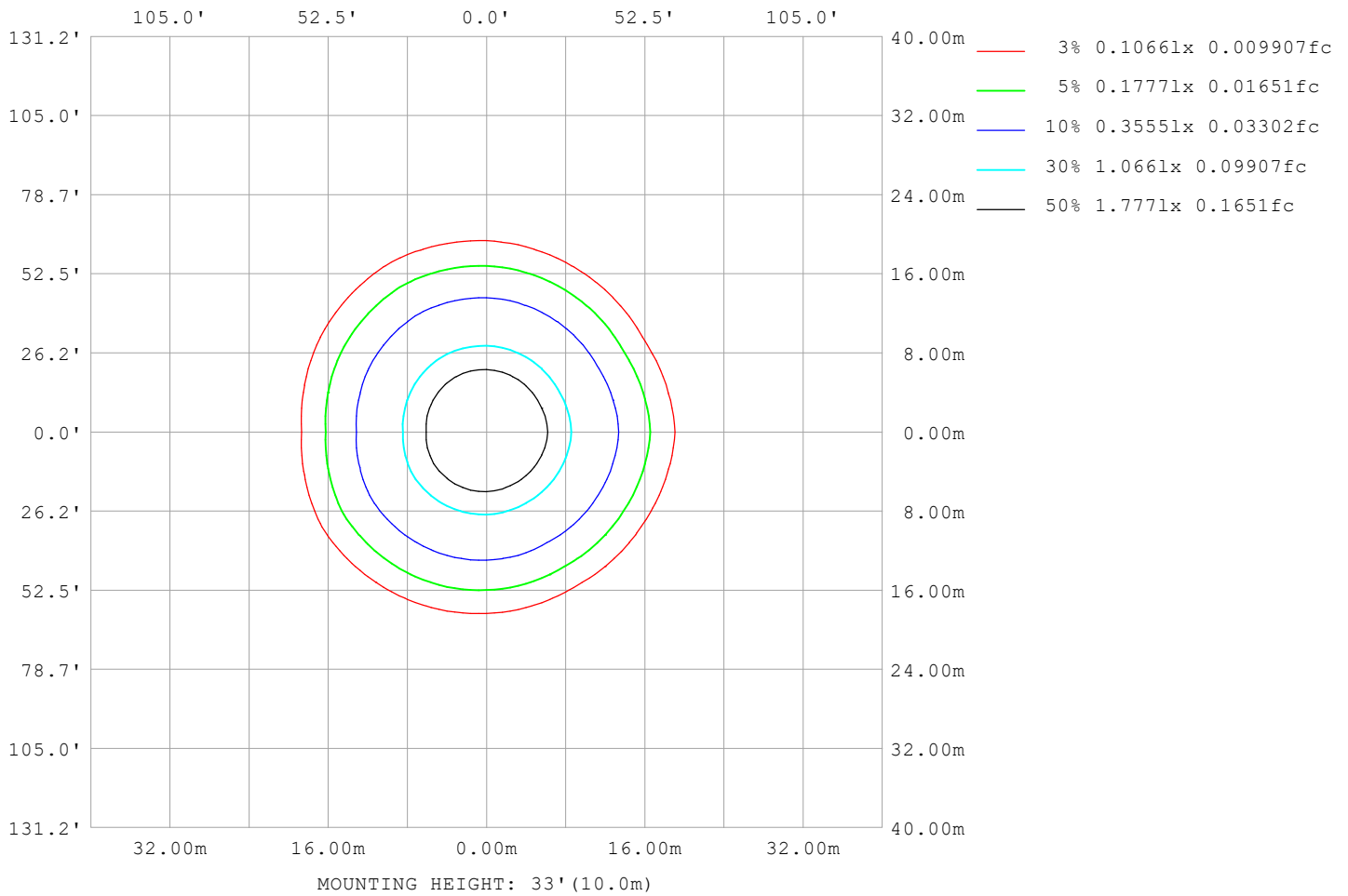
Note:The Curves indicate the illuminated area and the average illumination when the luminaire is at different distance.

C Range: 0 - 360DEG
C Interval: 30.0DEG
Test Speed: HIGH
Temperature:25.3°C
Operators:DAMIN
Test Date:2026-02-02

γ Range: 0 - 90DEG
γ Interval: 5.0DEG
Test System:EVERFINE GO-2000B_V1 SYSTEM V2.00.488
Humidity:65.0%
Test Distance:6.144m [K=1.0000]
Remarks:

ISOLUX DIAGRAM

Test:U:120.99V I:0.0960A P:11.508W PF:0.9906 Freq:60.00Hz Lamp Flux:858.704x1 lm		
NAME: LS-SMC-5-C32-11W-5CCT-WH	TYPE:	WEIGHT:
SPEC.:	DIM.:	SERIAL No.: 1#30K
MFR.: YOURZOR	SUR.: 0.110	Shielding Angle:



C Range: 0 - 360DEG
 C Interval: 30.0DEG
 Test Speed: HIGH
 Temperature:25.3°C
 Operators:DAMIN
 Test Date:2026-02-02

γ Range: 0 - 90DEG
 γ Interval: 5.0DEG
 Test System:EVERFINE GO-2000B_V1 SYSTEM V2.00.488
 Humidity:65.0%
 Test Distance:6.144m [K=1.0000]
 Remarks:

LED Avg.L Report

Test:U:120.99V I:0.0960A P:11.508W PF:0.9906 Freq:60.00Hz Lamp Flux:858.704x1 lm		
NAME: LS-SMC-5-C32-11W-5CCT-WH	TYPE:	WEIGHT:
SPEC.:	DIM.:	SERIAL No.: 1#30K
MFR.: YOURZOR	SUR.: 0.110	Shielding Angle:

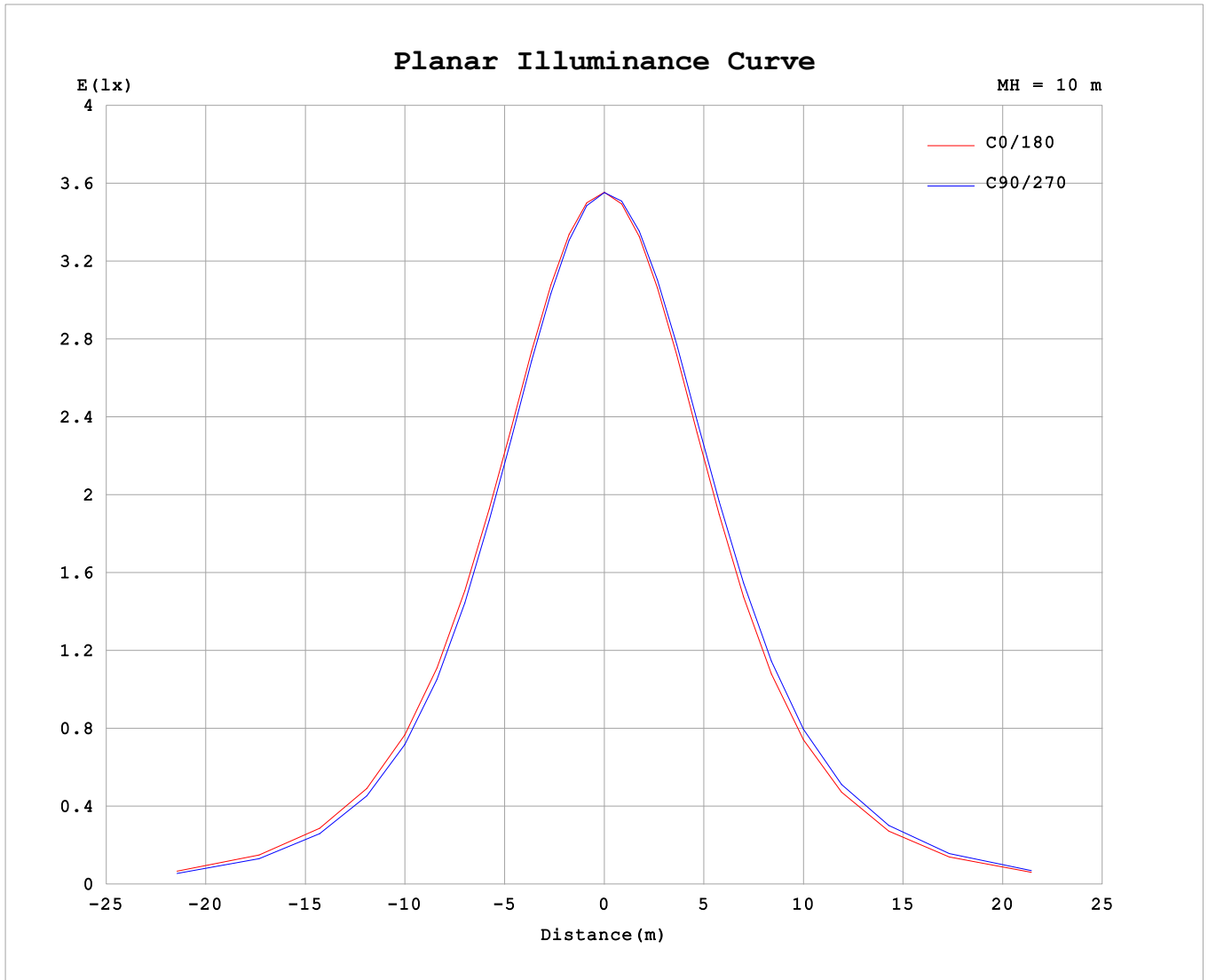
AvgL	cd/m2
L_0~180 (65) av	21235
L_0~180 (75) av	11588
L_0~180 (85) av	390
L_90~270 (65) av	21098
L_90~270 (75) av	11332
L_90~270 (85) av	404
L_45 (65) av	21069
L_45 (75) av	11266
L_45 (85) av	389

Standard: GB/T 29293-2012

C Range: 0 - 360DEG
 C Interval: 30.0DEG
 Test Speed: HIGH
 Temperature:25.3°C
 Operators:DAMIN
 Test Date:2026-02-02

γ Range: 0 - 90DEG
 γ Interval: 5.0DEG
 Test System:EVERFINE GO-2000B_V1 SYSTEM V2.00.488
 Humidity:65.0%
 Test Distance:6.144m [K=1.0000]
 Remarks:

Planar Illuminance Curve



C Range: 0 - 360DEG
 C Interval: 30.0DEG
 Test Speed: HIGH
 Temperature: 25.3°C
 Operators: DAMIN
 Test Date: 2026-02-02

γ Range: 0 - 90DEG
 γ Interval: 5.0DEG
 Test System: EVERFINE GO-2000B_V1 SYSTEM V2.00.488
 Humidity: 65.0%
 Test Distance: 6.144m [K=1.0000]
 Remarks:

