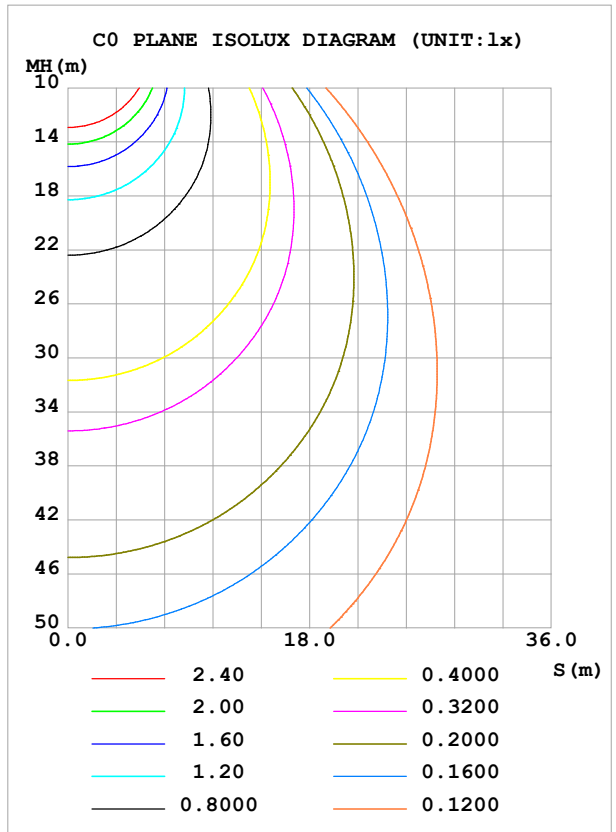
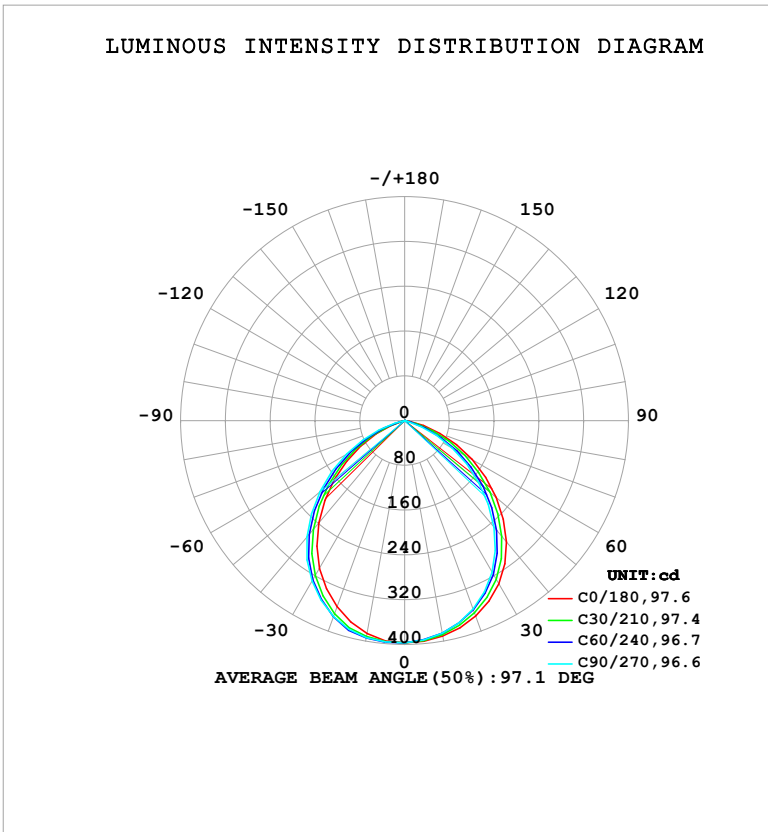


**LUMINAIRE PHOTOMETRIC TEST REPORT**

Test:U:120.99V I:0.0960A P:11.509W PF:0.9906 Freq:60.00Hz Lamp Flux:867.374x1 lm		
NAME: LS-SMC-5-C32-11W-5CCT-BL	TYPE:	WEIGHT:
SPEC.:	DIM.:	SERIAL No.: 1#30K
MFR.: YOURZOR	SUR.: 0.110	Shielding Angle:

DATA OF LAMP		PHOTOMETRIC DATA			
MSBEMC-5-C32-11W-5CCT-BL-30K		Imax (cd)	397.1	S/MH (C0/180)	1.15
NOMINAL POWER (W)	11	LOR (%)	100.0	S/MH (C90/270)	1.24
RATED VOLTAGE (V)	120	TOTAL FLUX (lm)	867.37	$\eta$ UP, DN (C0-180)	0.0,50.0
NOMINAL FLUX (lm)	867.374	CIE CLASS	DIRECT	$\eta$ UP, DN (C180-360)	0.0,50.0
LAMPS INSIDE	1	$\eta$ up (%)	0.0	CIBSE SHR NOM	1.25
TEST VOLTAGE (V)	120	$\eta$ down (%)	100.0	CIBSE SHR MAX	1.30



C Range: 0 - 360DEG  
 C Interval: 30.0DEG  
 Test Speed: HIGH  
 Temperature: 25.3°C  
 Operators: DAMIN  
 Test Date: 2026-02-02

$\gamma$  Range: 0 - 90DEG  
 $\gamma$  Interval: 5.0DEG  
 Test System: EVERFINE GO-2000B\_V1 SYSTEM V2.00.488  
 Humidity: 65.0%  
 Test Distance: 6.144m [K=1.0000]  
 Remarks:

**ZONAL FLUX DIAGRAM**

ZONAL FLUX DIAGRAM:

$\gamma$	C0	C45	C90	C135	C180	C225	C270	C315	$\gamma$	$\Phi$ zone	$\Phi$ total	%lum,lamp
10	390.9	387.0	385.7	386.9	385.9	392.8	393.5	387.6	0- 10	37.49	37.49	4.32,4.32
20	371.2	362.2	357.9	354.5	353.8	369.9	372.4	361.1	10- 20	106.5	144.0	16.6,16.6
30	336.7	322.6	313.0	305.4	305.1	324.0	330.8	317.4	20- 30	157.6	301.7	34.8,34.8
40	282.8	263.0	248.4	238.0	238.6	259.7	271.3	256.4	30- 40	180.7	482.4	55.6,55.6
50	213.9	191.2	173.6	161.1	164.3	183.0	197.3	182.6	40- 50	169.4	651.8	75.1,75.1
60	139.4	115.9	98.33	85.21	90.69	105.2	120.0	106.4	50- 60	128.6	780.4	90,90
70	67.47	46.42	32.04	20.48	25.99	35.29	48.66	37.53	60- 70	70.30	850.7	98.1,98.1
80	8.217	0.4142	0.2147	0.2546	0.4216	0.5441	0.5006	0.4913	70- 80	16.20	866.9	99.9,99.9
90	0.1923	0.2351	0.2905	0.2824	0.4436	0.3439	0.2905	0.2824	80- 90	0.5164	867.4	100,100
100									90-100			
110									100-110			
120									110-120			
130									120-130			
140									130-140			
150									140-150			
160									150-160			
170									160-170			
180									170-180			
DEG	LUMINOUS INTENSITY:cd									UNIT:lm		

Conical surface Flux(90deg): 570.55 lm

%lum = 65.8%

%lamp = 65.8%

Conical surface Flux(130deg): 823.27 lm

%lum = 94.9%

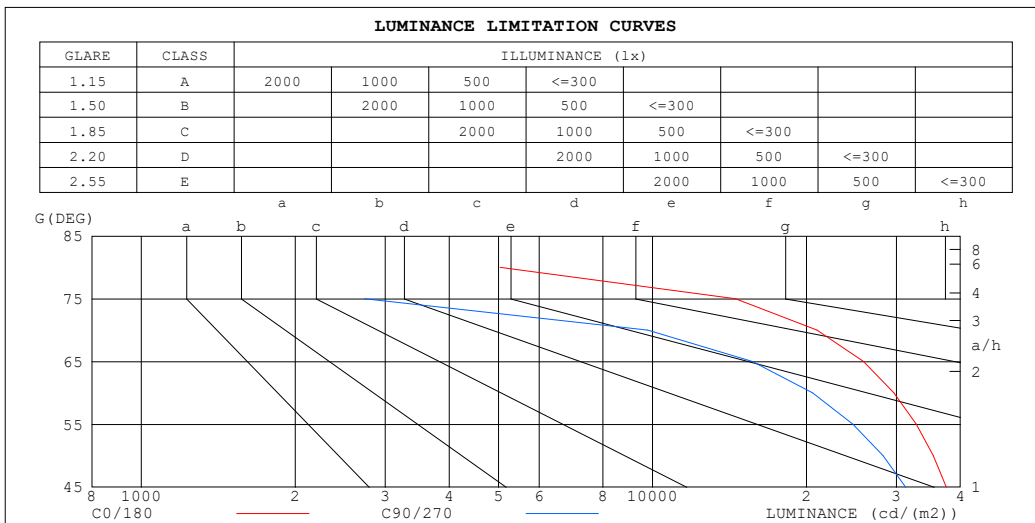
%lamp = 94.9%

C Range: 0 - 360DEG  
 C Interval: 30.0DEG  
 Test Speed: HIGH  
 Temperature:25.3°C  
 Operators:DAMIN  
 Test Date:2026-02-02

$\gamma$  Range: 0 - 90DEG  
 $\gamma$  Interval: 5.0DEG  
 Test System:EVERFINE GO-2000B\_V1 SYSTEM V2.00.488  
 Humidity:65.0%  
 Test Distance:6.144m [K=1.0000]  
 Remarks:

**LUMINANCE LIMITATION CURVES**

Test:U:120.99V I:0.0960A P:11.509W PF:0.9906 Freq:60.00Hz Lamp Flux:867.374x1 lm		
NAME: LS-SMC-5-C32-11W-5CCT-BL	TYPE:	WEIGHT:
SPEC.:	DIM.:	SERIAL No.: 1#30K
MFR.: YOURZOR	SUR.: 0.110	Shielding Angle:



LUMINANCE cd/(m2)		
G (DEG)	C0/180	C90/270
85	246	261
80	5035	129
75	14518	2731
70	20988	9789
65	25843	15682
60	29661	20554
55	32787	24674
50	35408	28231
45	37561	31279

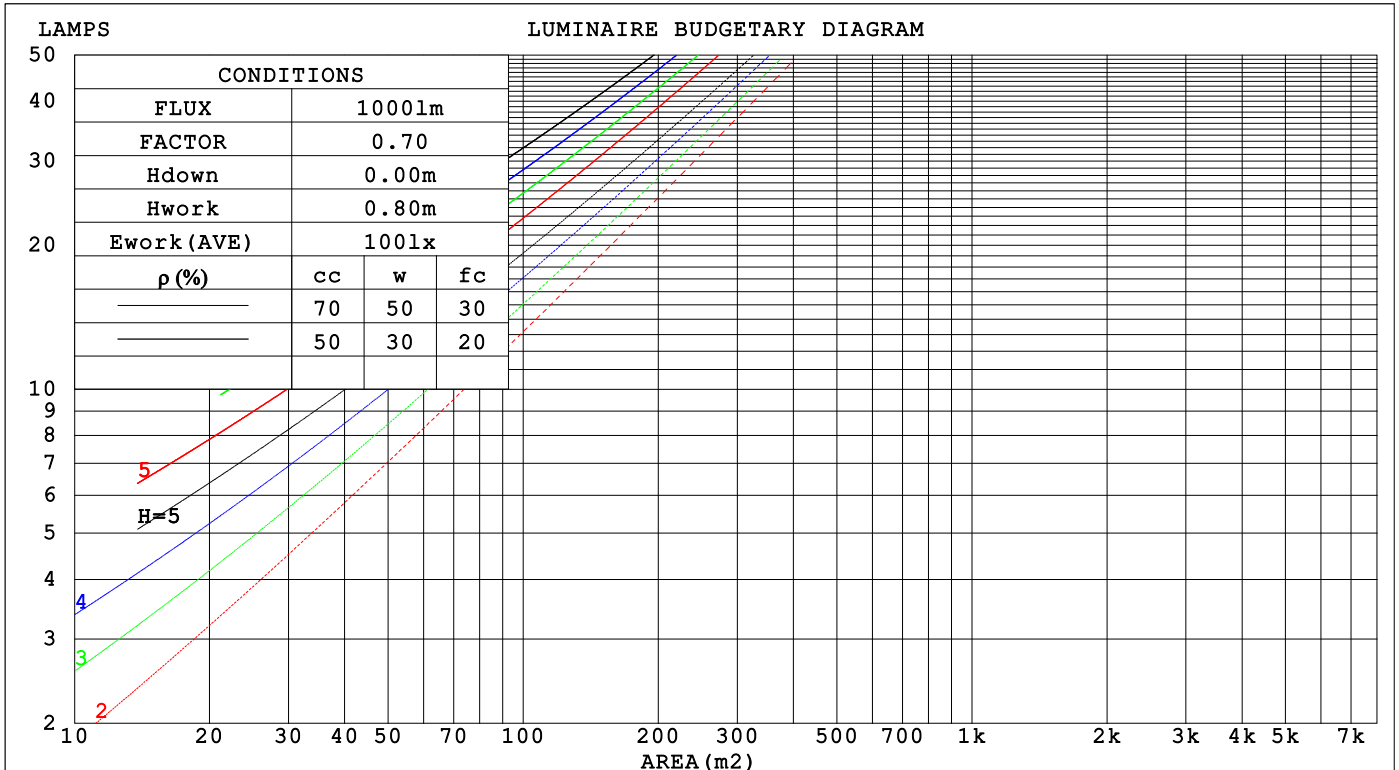
C Range: 0 - 360DEG  
 C Interval: 30.0DEG  
 Test Speed: HIGH  
 Temperature:25.3°C  
 Operators:DAMIN  
 Test Date:2026-02-02

γ Range: 0 - 90DEG  
 γ Interval: 5.0DEG  
 Test System:EVERFINE GO-2000B\_V1 SYSTEM V2.00.488  
 Humidity:65.0%  
 Test Distance:6.144m [K=1.0000]  
 Remarks:

**CU AND LUMINAIRE BUDGETARY ESTIMATE DIAGRAM**

Test:U:120.99V I:0.0960A P:11.509W PF:0.9906 Freq:60.00Hz Lamp Flux:867.374x1 lm		
NAME: LS-SMC-5-C32-11W-5CCT-BL	TYPE:	WEIGHT:
SPEC.:	DIM.:	SERIAL No.: 1#30K
MFR.: YOURZOR	SUR.: 0.110	Shielding Angle:

ρcc	80%			70%			50%			30%			10%			0
ρw	50%	30%	10%	50%	30%	10%	50%	30%	10%	50%	30%	10%	50%	30%	10%	0
ρfc	20%			20%			20%			20%			20%			0
RCR	RCR:Room Cavity Ratio      Coefficients of Utilization(CU)															
0.0	1.19	1.19	1.19	1.16	1.16	1.16	1.11	1.11	1.11	1.06	1.06	1.06	1.02	1.02	1.02	.00
1.0	1.07	1.04	1.00	1.05	1.02	.99	1.01	.98	.96	.97	.95	.93	.93	.92	.90	.88
2.0	.95	.90	.85	.93	.88	.84	.90	.86	.82	.87	.83	.80	.84	.81	.78	.76
3.0	.85	.78	.72	.84	.77	.72	.81	.75	.70	.78	.73	.69	.76	.71	.68	.66
4.0	.76	.68	.62	.75	.68	.62	.73	.66	.61	.70	.65	.60	.68	.64	.60	.58
5.0	.69	.61	.55	.68	.60	.54	.66	.59	.54	.64	.58	.53	.62	.57	.53	.51
6.0	.62	.54	.48	.61	.54	.48	.60	.53	.48	.58	.52	.47	.56	.51	.47	.45
7.0	.57	.49	.43	.56	.48	.43	.55	.48	.43	.53	.47	.42	.52	.46	.42	.40
8.0	.52	.44	.39	.51	.44	.39	.50	.43	.38	.49	.43	.38	.48	.42	.38	.36
9.0	.48	.40	.35	.47	.40	.35	.46	.39	.35	.45	.39	.35	.44	.39	.34	.33
10.0	.44	.37	.32	.44	.37	.32	.43	.36	.32	.42	.36	.32	.41	.35	.31	.30



C Range: 0 - 360DEG  
 C Interval: 30.0DEG  
 Test Speed: HIGH  
 Temperature:25.3°C  
 Operators:DAMIN  
 Test Date:2026-02-02

γ Range: 0 - 90DEG  
 γ Interval: 5.0DEG  
 Test System:EVERFINE GO-2000B\_V1 SYSTEM V2.00.488  
 Humidity:65.0%  
 Test Distance:6.144m [K=1.0000]  
 Remarks:

**WEC AND CCEC**

Test:U:120.99V I:0.0960A P:11.509W PF:0.9906 Freq:60.00Hz Lamp Flux:867.374x1 lm		
NAME: LS-SMC-5-C32-11W-5CCT-BL	TYPE:	WEIGHT:
SPEC.:	DIM.:	SERIAL No.: 1#30K
MFR.: YOURZOR	SUR.: 0.110	Shielding Angle:

$\rho_{CC}$	80%			70%			50%			30%			10%			0
$\rho_w$	50%	30%	10%	50%	30%	10%	50%	30%	10%	50%	30%	10%	50%	30%	10%	0
$\rho_{fc}$	20%			20%			20%			20%			20%			0
RCR	RCR:Room Cavity Ratio						Wall Exitance Coefficients (WEC)									
0.0																
1.0	.250	.142	.045	.243	.139	.044	.230	.132	.042	.218	.126	.040	.207	.120	.039	
2.0	.245	.134	.041	.239	.132	.041	.228	.127	.039	.218	.122	.038	.208	.118	.037	
3.0	.234	.124	.037	.228	.122	.037	.219	.118	.036	.209	.115	.035	.201	.111	.034	
4.0	.221	.115	.034	.216	.113	.033	.207	.110	.033	.199	.107	.032	.191	.104	.032	
5.0	.207	.106	.031	.203	.104	.030	.195	.102	.030	.188	.099	.030	.181	.097	.029	
6.0	.195	.098	.028	.191	.097	.028	.184	.094	.027	.178	.092	.027	.172	.090	.027	
7.0	.183	.091	.026	.180	.090	.026	.174	.088	.025	.168	.086	.025	.163	.084	.025	
8.0	.173	.084	.024	.170	.084	.024	.164	.082	.023	.159	.081	.023	.154	.079	.023	
9.0	.163	.079	.022	.160	.078	.022	.155	.077	.022	.151	.076	.022	.146	.074	.021	
10.0	.154	.074	.021	.152	.073	.020	.147	.072	.020	.143	.071	.020	.139	.070	.020	

$\rho_{CC}$	80%			70%			50%			30%			10%			0
$\rho_w$	50%	30%	10%	50%	30%	10%	50%	30%	10%	50%	30%	10%	50%	30%	10%	0
$\rho_{fc}$	20%			20%			20%			20%			20%			0
RCR	RCR:Room Cavity Ratio						Ceiling Cavity Exitance Coefficients (CCEC)									
0.0	.190	.190	.190	.163	.163	.163	.111	.111	.111	.064	.064	.064	.020	.020	.020	
1.0	.176	.157	.139	.151	.134	.120	.103	.093	.083	.059	.054	.048	.019	.017	.016	
2.0	.166	.132	.104	.142	.114	.090	.097	.079	.062	.056	.046	.037	.018	.015	.012	
3.0	.157	.114	.079	.135	.098	.069	.093	.068	.048	.054	.040	.028	.017	.013	.009	
4.0	.150	.100	.063	.129	.087	.054	.088	.060	.038	.051	.035	.023	.016	.012	.007	
5.0	.143	.090	.051	.122	.078	.044	.084	.054	.031	.049	.032	.018	.016	.010	.006	
6.0	.136	.081	.042	.117	.070	.036	.081	.049	.026	.047	.029	.015	.015	.009	.005	
7.0	.130	.074	.035	.111	.064	.031	.077	.045	.022	.045	.027	.013	.014	.009	.004	
8.0	.124	.068	.030	.106	.059	.026	.074	.042	.019	.043	.025	.011	.014	.008	.004	
9.0	.118	.063	.026	.102	.055	.023	.070	.039	.016	.041	.023	.010	.013	.007	.003	
10.0	.113	.059	.023	.097	.051	.020	.067	.036	.015	.039	.021	.009	.013	.007	.003	

C Range: 0 - 360DEG  
 C Interval: 30.0DEG  
 Test Speed: HIGH  
 Temperature:25.3°C  
 Operators:DAMIN  
 Test Date:2026-02-02

$\gamma$  Range: 0 - 90DEG  
 $\gamma$  Interval: 5.0DEG  
 Test System:EVERFINE GO-2000B\_V1 SYSTEM V2.00.488  
 Humidity:65.0%  
 Test Distance:6.144m [K=1.0000]  
 Remarks:

**UGR(Unified Glare Rating) Table**

Test:U:120.99V I:0.0960A P:11.509W PF:0.9906 Freq:60.00Hz										
Lamp Flux:867.374x1 lm										
NAME: LS-SMC-5-C32-11W-5CCT-BL					TYPE:			WEIGHT:		
SPEC.:					DIM.:			SERIAL No.: 1#30K		
MFR.: YOURZOR					SUR.: 0.110			Shielding Angle:		
ceiling/cavity	0.7	0.7	0.5	0.5	0.3	0.7	0.7	0.5	0.5	0.3
walls	0.5	0.3	0.5	0.3	0.3	0.5	0.3	0.5	0.3	0.3
working plane	0.2	0.2	0.2	0.2	0.2	0.2	0.2	0.2	0.2	0.2
Room dimensions	Viewed crosswise					Viewed endwise				
x = 2H y = 2H	25.4	26.8	25.7	27.0	27.2	24.2	25.6	24.5	25.8	26.0
3H	26.3	27.6	26.6	27.8	28.0	24.6	25.8	24.8	26.0	26.3
4H	26.5	27.7	26.8	27.9	28.2	24.5	25.7	24.8	25.9	26.2
6H	26.4	27.5	26.7	27.8	28.0	24.4	25.5	24.7	25.8	26.0
8H	26.4	27.4	26.7	27.7	28.0	24.3	25.4	24.7	25.7	26.0
12H	26.3	27.3	26.6	27.6	27.9	24.3	25.3	24.6	25.6	25.9
4H 2H	25.7	26.9	26.0	27.1	27.4	24.7	25.8	25.0	26.1	26.3
3H	26.6	27.7	27.0	27.9	28.2	25.0	26.1	25.4	26.4	26.6
4H	26.8	27.7	27.2	28.0	28.4	25.0	25.9	25.3	26.2	26.5
6H	26.7	27.6	27.1	27.9	28.3	24.9	25.7	25.3	26.0	26.4
8H	26.7	27.4	27.1	27.8	28.2	24.8	25.6	25.2	26.0	26.3
12H	26.6	27.3	27.1	27.7	28.1	24.8	25.5	25.2	25.9	26.3
8H 4H	26.7	27.5	27.1	27.8	28.2	24.9	25.7	25.3	26.1	26.4
6H	26.6	27.3	27.1	27.7	28.1	24.9	25.5	25.3	25.9	26.3
8H	26.6	27.1	27.1	27.6	28.0	24.8	25.4	25.3	25.8	26.2
12H	26.6	27.0	27.0	27.5	27.9	24.8	25.2	25.2	25.7	26.1
12H 4H	26.7	27.3	27.1	27.7	28.1	24.9	25.6	25.3	26.0	26.4
6H	26.6	27.1	27.1	27.6	28.0	24.8	25.4	25.3	25.8	26.2
8H	26.6	27.0	27.0	27.5	27.9	24.8	25.2	25.2	25.7	26.1
Variations with the observer position at spacings(CIE Pub.117):										
S = 1.0H	+ 0.2 / - 0.3					+ 0.5 / - 0.7				
1.5H	+ 0.3 / - 0.5					+ 0.4 / - 0.5				
2.0H	+ 1.0 / - 1.2					+ 0.9 / - 1.2				

CIE Pub.117, 867.4 lm Total Lamp Luminous Flux Correct (8log(F/F0) = -0.5)  
 Area: 0.0095 m2

C Range: 0 - 360DEG  
 C Interval: 30.0DEG  
 Test Speed: HIGH  
 Temperature:25.3°C  
 Operators:DAMIN  
 Test Date:2026-02-02

γ Range: 0 - 90DEG  
 γ Interval: 5.0DEG  
 Test System:EVERFINE GO-2000B\_V1 SYSTEM V2.00.488  
 Humidity:65.0%  
 Test Distance:6.144m [K=1.0000]  
 Remarks:

**UTILIZATION FACTORS TABLE**

Test:U:120.99V I:0.0960A P:11.509W PF:0.9906 Freq:60.00Hz Lamp Flux:867.374x1 lm		
NAME: LS-SMC-5-C32-11W-5CCT-BL	TYPE:	WEIGHT:
SPEC.:	DIM.:	SERIAL No.: 1#30K
MFR.: YOURZOR	SUR.: 0.110	Shielding Angle:

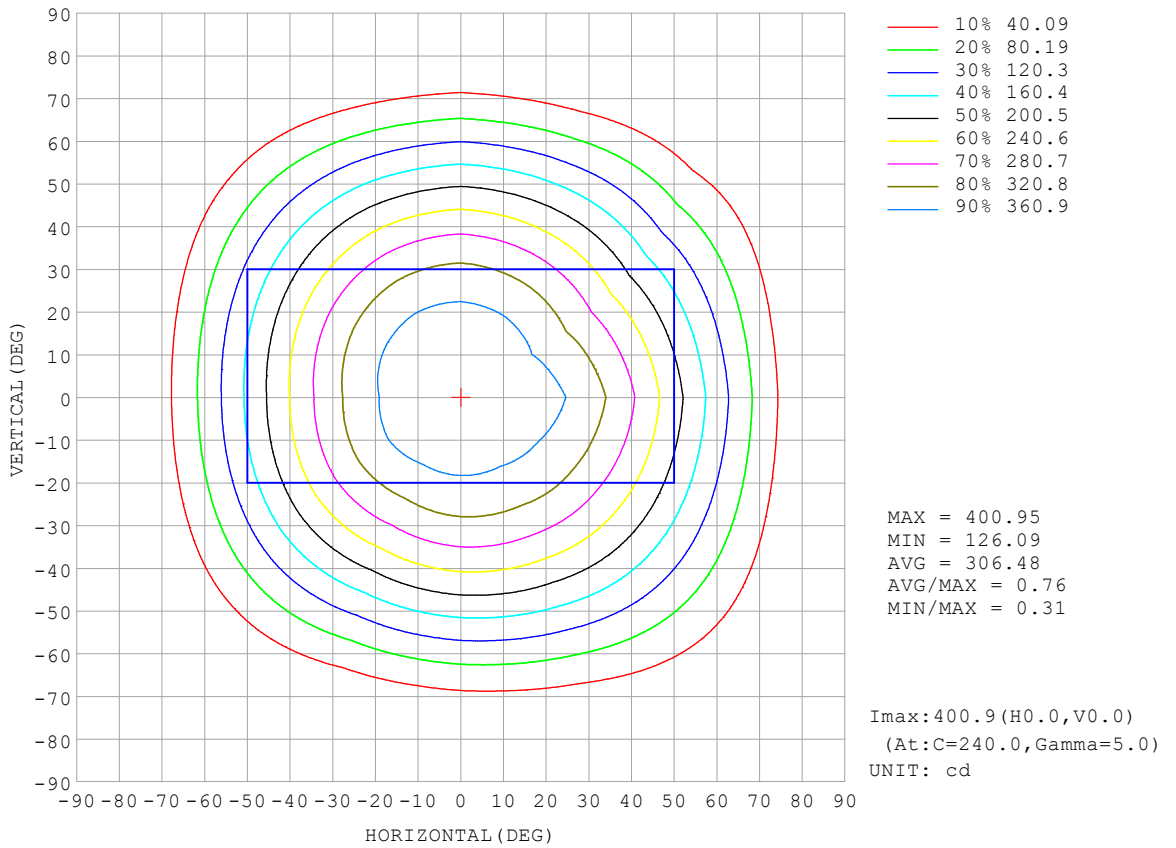
REFLECTANCE										
Ceiling	0.8	0.8	0.8	0.7	0.7	0.7	0.5	0.5	0.5	0
Walls	0.7	0.5	0.3	0.7	0.5	0.3	0.7	0.5	0.3	0
Working plane	0.2	0.2	0.2	0.2	0.2	0.2	0.2	0.2	0.2	0
ROOM INDEX	UTILIZATION FACTORS (PERCENT) $k(RI) \times RCR = 5$									
k = 0.60	63	53	47	63	53	46	62	52	46	40
0.80	74	63	57	73	63	57	71	62	56	50
1.00	82	73	66	81	72	66	79	73	66	59
1.25	89	80	74	88	80	74	85	78	73	67
1.50	94	85	80	92	85	79	89	83	78	72
2.00	100	93	88	98	92	87	95	90	85	78
2.50	103	97	92	101	95	91	98	93	89	82
3.00	106	100	96	104	99	95	100	96	93	85
4.00	109	105	101	107	103	99	103	100	97	89
5.00	111	107	104	109	105	102	104	102	99	91
ROOM INDEX	UF(total)									Direct
According to DIN EN 13032-2 2004			Suspended				SHRNOM = 1.25			

C Range: 0 - 360DEG  
 C Interval: 30.0DEG  
 Test Speed: HIGH  
 Temperature:25.3°C  
 Operators:DAMIN  
 Test Date:2026-02-02

$\gamma$  Range: 0 - 90DEG  
 $\gamma$  Interval: 5.0DEG  
 Test System:EVERFINE GO-2000B\_V1 SYSTEM V2.00.488  
 Humidity:65.0%  
 Test Distance:6.144m [K=1.0000]  
 Remarks:

**ISOCANDELA DIAGRAM**

Test:U:120.99V I:0.0960A P:11.509W PF:0.9906 Freq:60.00Hz Lamp Flux:867.374x1 lm		
NAME: LS-SMC-5-C32-11W-5CCT-BL	TYPE:	WEIGHT:
SPEC.:	DIM.:	SERIAL No.: 1#30K
MFR.: YOURZOR	SUR.: 0.110	Shielding Angle:

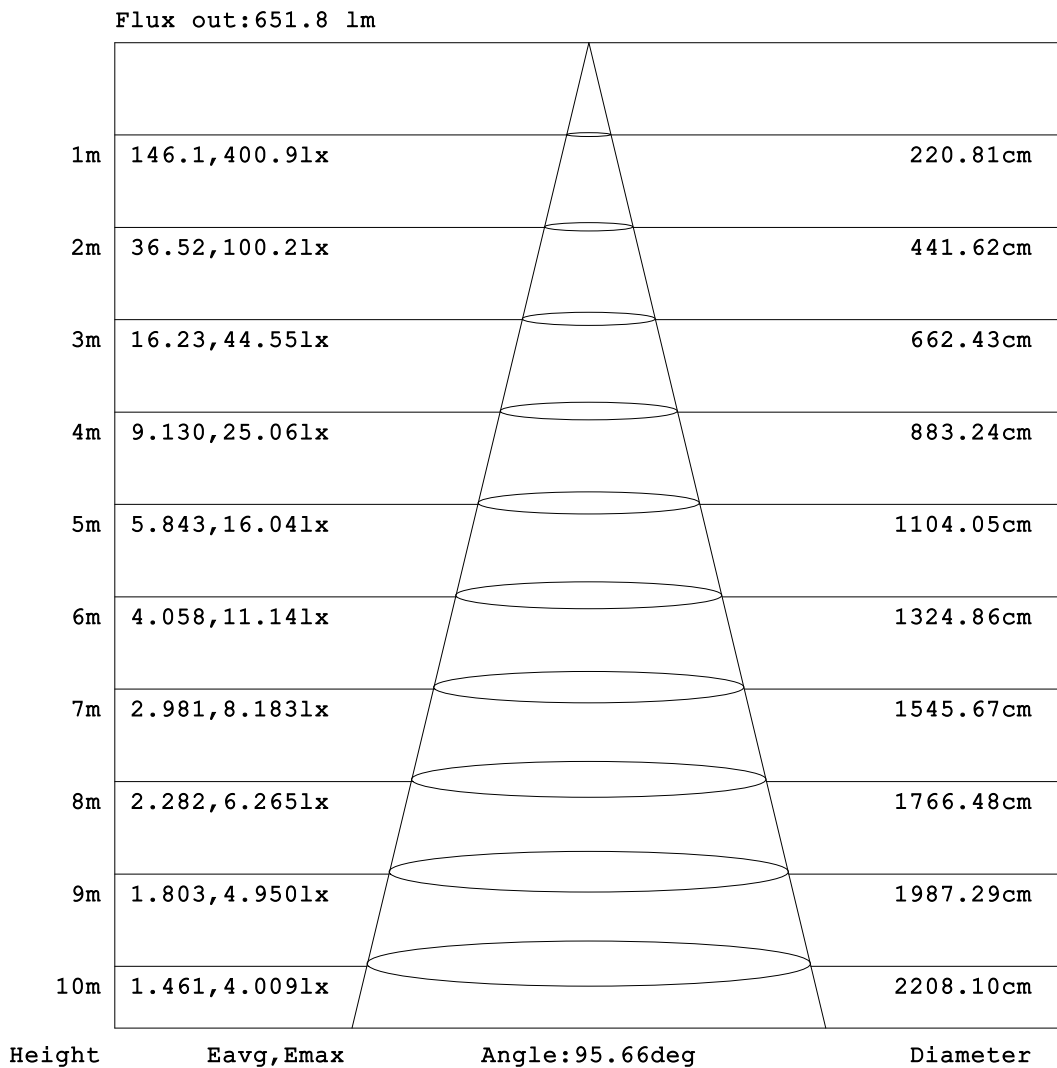


C Range: 0 - 360DEG  
 C Interval: 30.0DEG  
 Test Speed: HIGH  
 Temperature:25.3°C  
 Operators:DAMIN  
 Test Date:2026-02-02

γ Range: 0 - 90DEG  
 γ Interval: 5.0DEG  
 Test System:EVERFINE GO-2000B\_V1 SYSTEM V2.00.488  
 Humidity:65.0%  
 Test Distance:6.144m [K=1.0000]  
 Remarks:

**AAI Figure**

Test:U:120.99V I:0.0960A P:11.509W PF:0.9906 Freq:60.00Hz Lamp Flux:867.374x1 lm		
NAME: LS-SMC-5-C32-11W-5CCT-BL	TYPE:	WEIGHT:
SPEC.:	DIM.:	SERIAL No.: 1#30K
MFR.: YOURZOR	SUR.: 0.110	Shielding Angle:



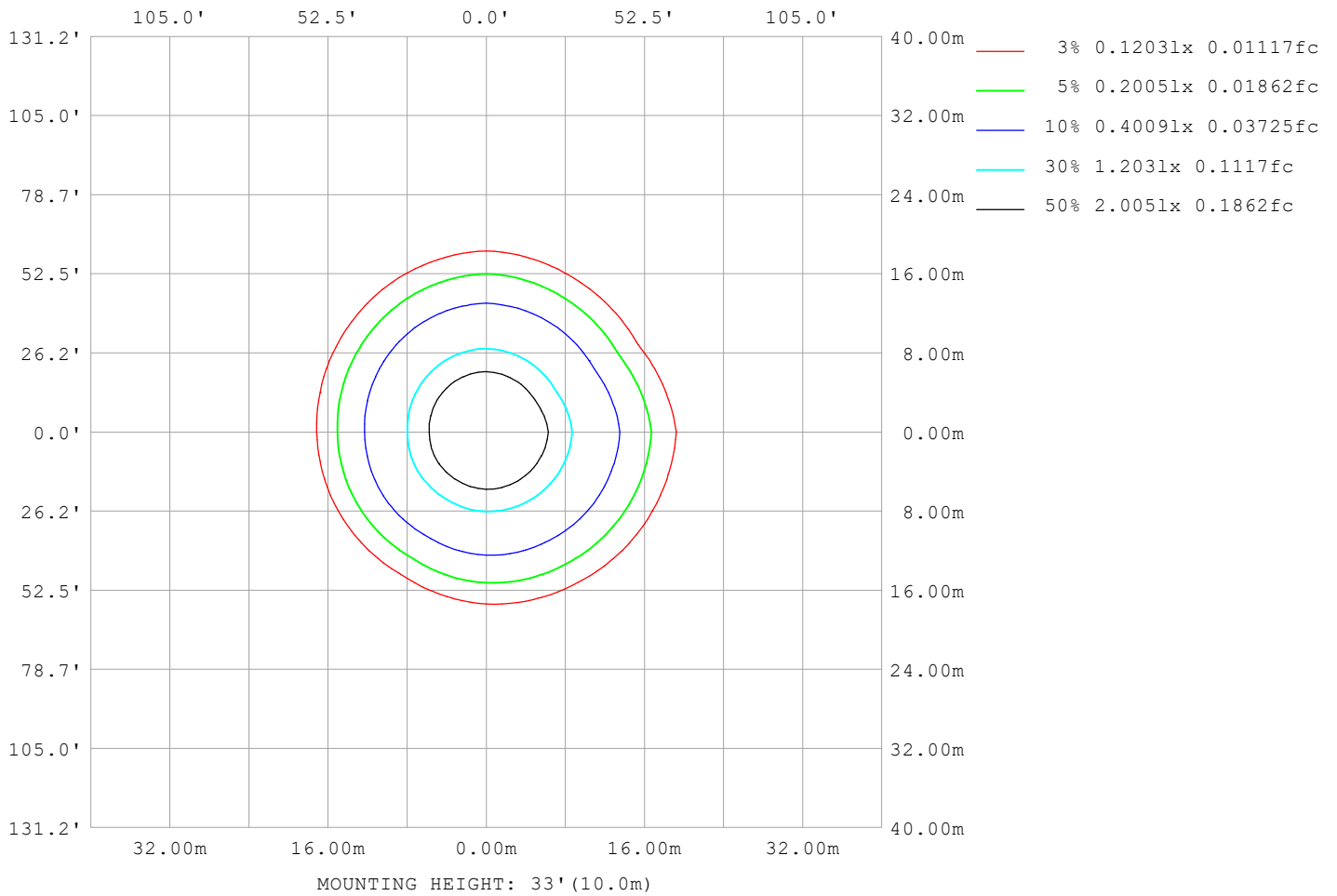
Note:The Curves indicate the illuminated area and the average illumination when the luminaire is at different distance.

C Range: 0 - 360DEG  
C Interval: 30.0DEG  
Test Speed: HIGH  
Temperature:25.3°C  
Operators:DAMIN  
Test Date:2026-02-02

γ Range: 0 - 90DEG  
γ Interval: 5.0DEG  
Test System:EVERFINE GO-2000B\_V1 SYSTEM V2.00.488  
Humidity:65.0%  
Test Distance:6.144m [K=1.0000]  
Remarks:

**ISOLUX DIAGRAM**

Test:U:120.99V I:0.0960A P:11.509W PF:0.9906 Freq:60.00Hz Lamp Flux:867.374x1 lm		
NAME: LS-SMC-5-C32-11W-5CCT-BL	TYPE:	WEIGHT:
SPEC.:	DIM.:	SERIAL No.: 1#30K
MFR.: YOURZOR	SUR.: 0.110	Shielding Angle:



C Range: 0 - 360DEG  
 C Interval: 30.0DEG  
 Test Speed: HIGH  
 Temperature:25.3°C  
 Operators:DAMIN  
 Test Date:2026-02-02

γ Range: 0 - 90DEG  
 γ Interval: 5.0DEG  
 Test System:EVERFINE GO-2000B\_V1 SYSTEM V2.00.488  
 Humidity:65.0%  
 Test Distance:6.144m [K=1.0000]  
 Remarks:

**LED Avg.L Report**

Test:U:120.99V I:0.0960A P:11.509W PF:0.9906 Freq:60.00Hz Lamp Flux:867.374x1 lm		
NAME: LS-SMC-5-C32-11W-5CCT-BL	TYPE:	WEIGHT:
SPEC.:	DIM.:	SERIAL No.: 1#30K
MFR.: YOURZOR	SUR.: 0.110	Shielding Angle:

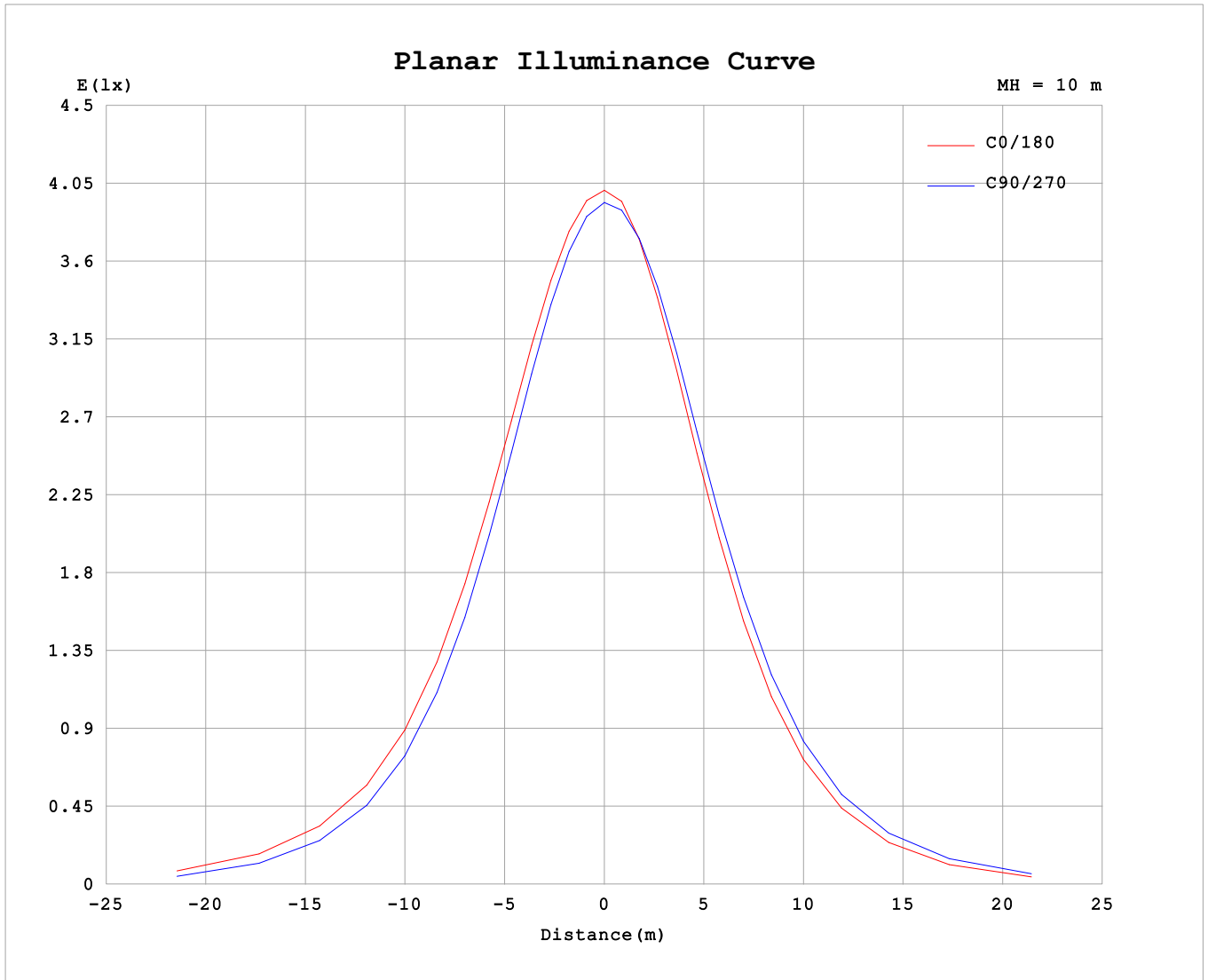
AvgL	cd/m2
L_0~180 (65) av	19839
L_0~180 (75) av	7688
L_0~180 (85) av	352
L_90~270 (65) av	18225
L_90~270 (75) av	5133
L_90~270 (85) av	311
L_45 (65) av	16499
L_45 (75) av	3424
L_45 (85) av	316

Standard: GB/T 29293-2012

C Range: 0 - 360DEG  
 C Interval: 30.0DEG  
 Test Speed: HIGH  
 Temperature:25.3℃  
 Operators:DAMIN  
 Test Date:2026-02-02

γ Range: 0 - 90DEG  
 γ Interval: 5.0DEG  
 Test System:EVERFINE GO-2000B\_V1 SYSTEM V2.00.488  
 Humidity:65.0%  
 Test Distance:6.144m [K=1.0000]  
 Remarks:

**Planar Illuminance Curve**



C Range: 0 - 360DEG  
 C Interval: 30.0DEG  
 Test Speed: HIGH  
 Temperature: 25.3°C  
 Operators: DAMIN  
 Test Date: 2026-02-02

γ Range: 0 - 90DEG  
 γ Interval: 5.0DEG  
 Test System: EVERFINE GO-2000B\_V1 SYSTEM V2.00.488  
 Humidity: 65.0%  
 Test Distance: 6.144m [K=1.0000]  
 Remarks:

