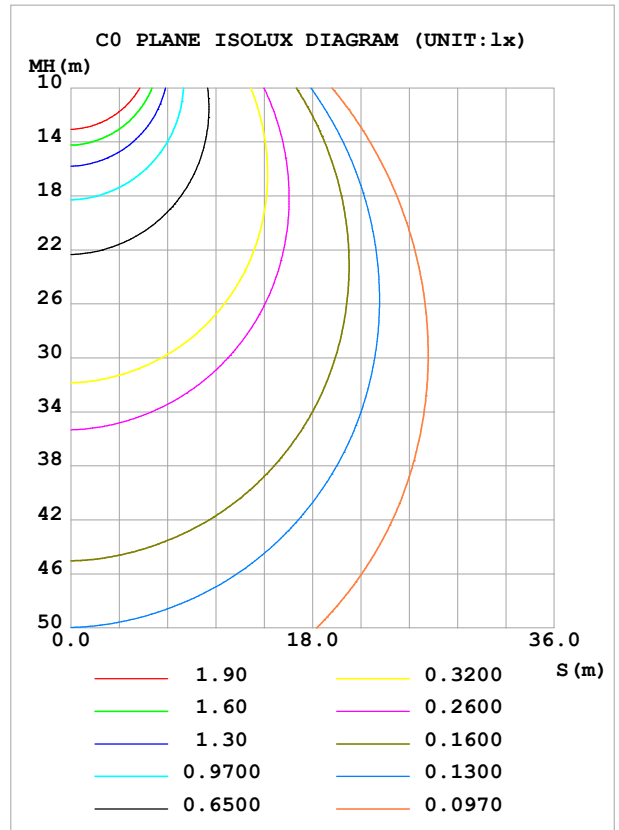
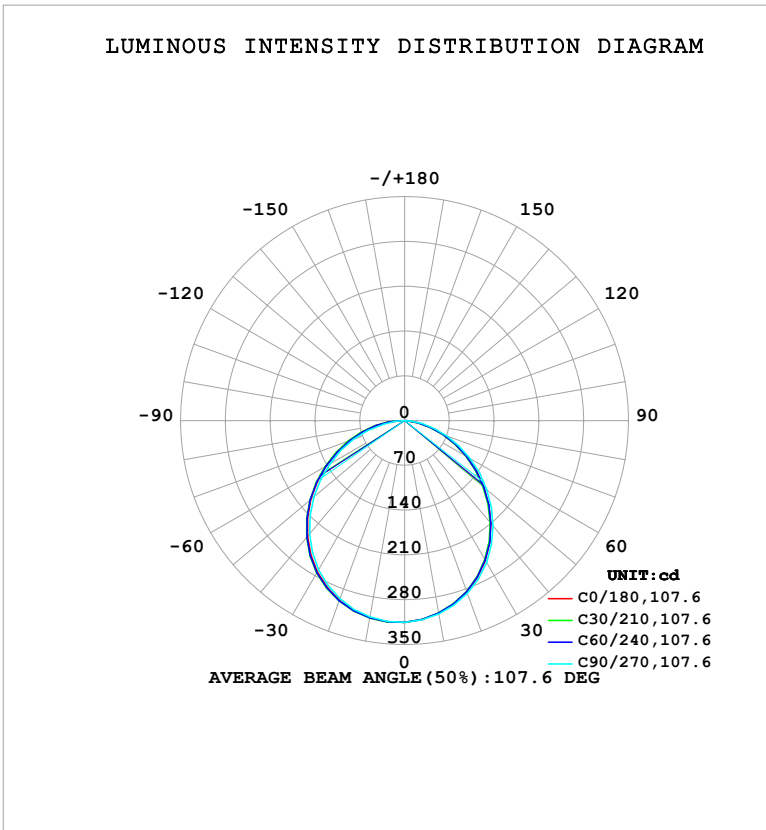


**LUMINAIRE PHOTOMETRIC TEST REPORT**

Test:U:120.92V I:0.0969A P:11.608W PF:0.9907 Freq:60.00Hz Lamp Flux:856.032x1 lm		
NAME: LS-SMC-5-C29-11W-5CCT-WH	TYPE:	WEIGHT:
SPEC.:	DIM.:	SERIAL No.: 1#27K
MFR.: YOURZOR	SUR.: 0.110	Shielding Angle:

DATA OF LAMP		PHOTOMETRIC DATA			
MSBEMC-5-C29-11W-5CCT-WH-27K		Imax (cd)	329.2	S/MH (C0/180)	1.28
NOMINAL POWER (W)	11	LOR (%)	100.0	S/MH (C90/270)	1.27
RATED VOLTAGE (V)	120	TOTAL FLUX (lm)	856.03	$\eta$ UP, DN (C0-180)	0.0,49.7
NOMINAL FLUX (lm)	856.032	CIE CLASS	DIRECT	$\eta$ UP, DN (C180-360)	0.0,50.3
LAMPS INSIDE	1	$\eta$ up (%)	0.0	CIBSE SHR NOM	1.25
TEST VOLTAGE (V)	120	$\eta$ down (%)	100.0	CIBSE SHR MAX	1.35



C Range: 0 - 360DEG  
C Interval: 30.0DEG  
Test Speed: HIGH  
Temperature: 25.3°C  
Operators: DAMIN  
Test Date: 2026-02-02

$\gamma$  Range: 0 - 90DEG  
 $\gamma$  Interval: 5.0DEG  
Test System: EVERFINE GO-2000B\_V1 SYSTEM V2.00.488  
Humidity: 65.0%  
Test Distance: 6.144m [K=1.0000]  
Remarks:

ZONAL FLUX DIAGRAM

ZONAL FLUX DIAGRAM:

$\gamma$	C0	C45	C90	C135	C180	C225	C270	C315	$\gamma$	$\Phi$ zone	$\Phi$ total	%lum, lamp
10	305.7	305.3	307.0	317.4	312.8	313.4	311.6	300.8	0- 10	29.80	29.80	3.48,3.48
20	284.7	284.0	287.3	307.6	298.8	299.8	296.3	273.9	10- 20	85.13	114.9	13.4,13.4
30	252.4	251.4	256.2	286.8	273.0	274.7	269.1	238.5	20- 30	128.3	243.2	28.4,28.4
40	209.9	209.1	215.1	249.5	236.3	238.3	231.0	194.1	30- 40	152.5	395.7	46.2,46.2
50	161.7	160.7	167.7	199.3	191.3	193.2	184.9	142.9	40- 50	153.9	549.7	64.2,64.2
60	112.1	110.8	118.1	146.5	142.1	143.0	135.0	91.69	50- 60	133.7	683.3	79.8,79.8
70	64.39	63.18	70.32	94.74	92.90	92.95	85.63	47.53	60- 70	99.03	782.4	91.4,91.4
80	21.56	21.12	27.99	47.34	47.03	46.79	33.33	12.35	70- 80	56.57	838.9	98,98
90	0.6112	0.6383	0.6939	6.157	4.076	6.197	1.968	1.044	80- 90	17.10	856.0	100,100
100									90-100			
110									100-110			
120									110-120			
130									120-130			
140									130-140			
150									140-150			
160									150-160			
170									160-170			
180									170-180			
DEG	LUMINOUS INTENSITY:cd									UNIT:lm		

Conical surface Flux(90deg): 473.97 lm

%lum = 55.4%

%lamp = 55.4%

Conical surface Flux(130deg): 737.85 lm

%lum = 86.2%

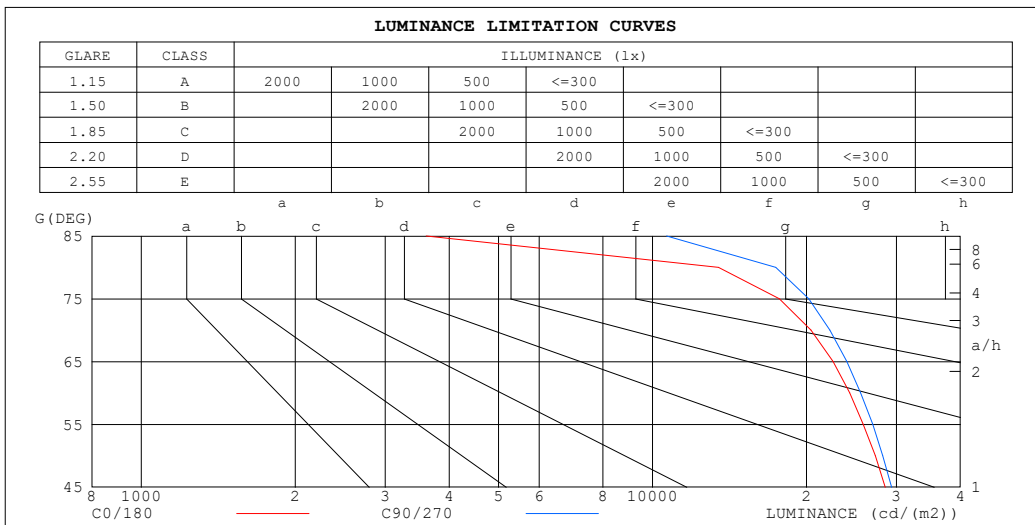
%lamp = 86.2%

C Range: 0 - 360DEG  
 C Interval: 30.0DEG  
 Test Speed: HIGH  
 Temperature:25.3°C  
 Operators:DAMIN  
 Test Date:2026-02-02

$\gamma$  Range: 0 - 90DEG  
 $\gamma$  Interval: 5.0DEG  
 Test System:EVERFINE GO-2000B\_V1 SYSTEM V2.00.488  
 Humidity:65.0%  
 Test Distance:6.144m [K=1.0000]  
 Remarks:

**LUMINANCE LIMITATION CURVES**

Test:U:120.92V I:0.0969A P:11.608W PF:0.9907 Freq:60.00Hz Lamp Flux:856.032x1 lm		
NAME: LS-SMC-5-C29-11W-5CCT-WH	TYPE:	WEIGHT:
SPEC.:	DIM.:	SERIAL No.: 1#27K
MFR.: YOURZOR	SUR.: 0.110	Shielding Angle:



LUMINANCE cd/(m2)		
G (DEG)	C0/180	C90/270
85	3606	10647
80	13455	17432
75	17700	20217
70	20403	22236
65	22552	23978
60	24289	25538
55	25834	26951
50	27260	28216
45	28538	29368

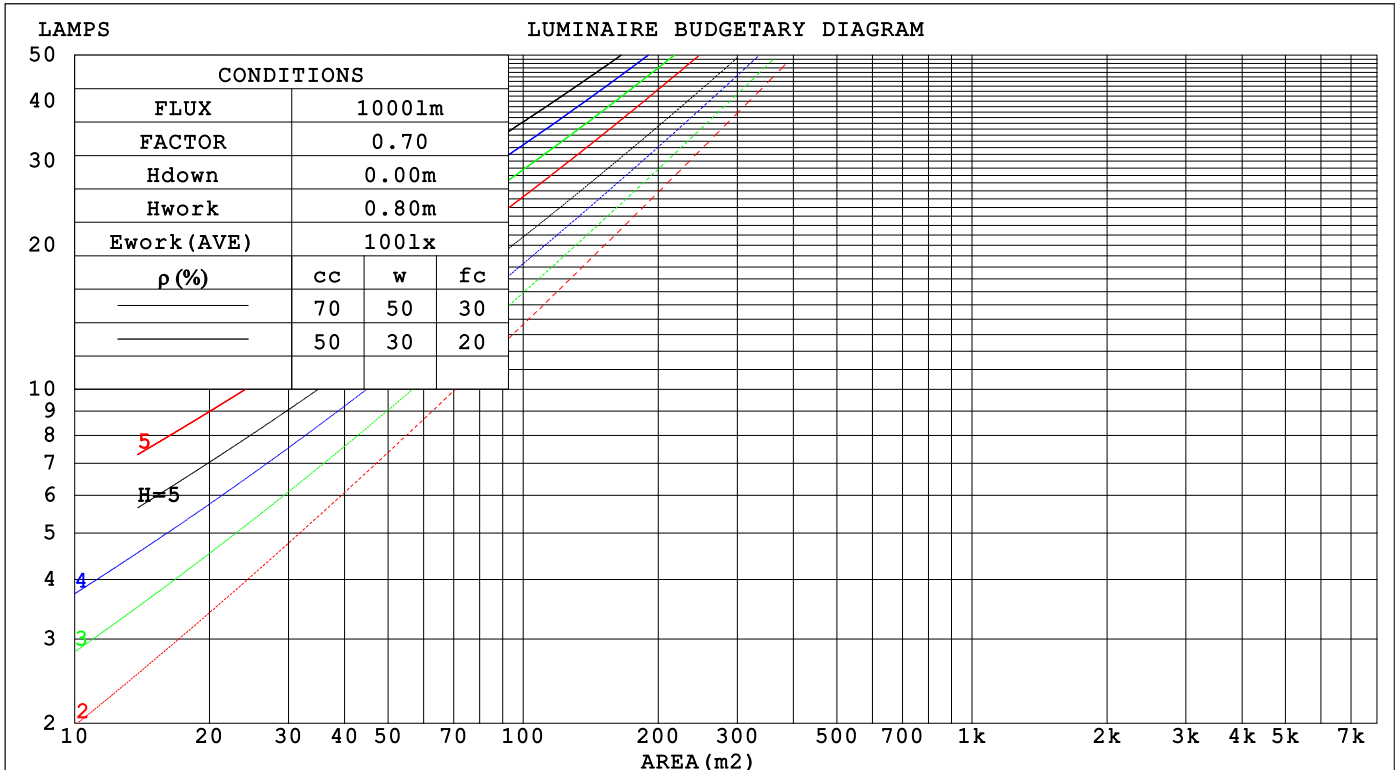
C Range: 0 - 360DEG  
 C Interval: 30.0DEG  
 Test Speed: HIGH  
 Temperature:25.3°C  
 Operators:DAMIN  
 Test Date:2026-02-02

γ Range: 0 - 90DEG  
 γ Interval: 5.0DEG  
 Test System:EVERFINE GO-2000B\_V1 SYSTEM V2.00.488  
 Humidity:65.0%  
 Test Distance:6.144m [K=1.0000]  
 Remarks:

**CU AND LUMINAIRE BUDGETARY ESTIMATE DIAGRAM**

Test:U:120.92V I:0.0969A P:11.608W PF:0.9907 Freq:60.00Hz Lamp Flux:856.032x1 lm		
NAME: LS-SMC-5-C29-11W-5CCT-WH	TYPE:	WEIGHT:
SPEC.:	DIM.:	SERIAL No.: 1#27K
MFR.: YOURZOR	SUR.: 0.110	Shielding Angle:

ρcc	80%			70%			50%			30%			10%			0
ρw	50%	30%	10%	50%	30%	10%	50%	30%	10%	50%	30%	10%	50%	30%	10%	0
ρfc	20%			20%			20%			20%			20%			0
RCR	RCR:Room Cavity Ratio															
	Coefficients of Utilization(CU)															
0.0	1.19	1.19	1.19	1.16	1.16	1.16	1.11	1.11	1.11	1.06	1.06	1.06	1.02	1.02	1.02	1.00
1.0	1.04	.00	.96	1.02	.98	.94	.98	.94	.91	.94	.91	.89	.90	.88	.86	.84
2.0	.91	.84	.78	.89	.83	.77	.85	.80	.76	.82	.78	.74	.79	.76	.72	.70
3.0	.80	.72	.65	.78	.71	.65	.75	.69	.64	.73	.67	.63	.70	.65	.61	.59
4.0	.71	.62	.56	.70	.61	.55	.67	.60	.54	.65	.59	.54	.63	.57	.53	.51
5.0	.63	.55	.48	.62	.54	.48	.60	.53	.47	.58	.52	.47	.56	.51	.46	.44
6.0	.57	.48	.42	.56	.48	.42	.54	.47	.41	.53	.46	.41	.51	.45	.41	.39
7.0	.52	.43	.37	.51	.43	.37	.50	.42	.37	.48	.41	.36	.47	.41	.36	.34
8.0	.47	.39	.33	.47	.39	.33	.45	.38	.33	.44	.37	.33	.43	.37	.32	.30
9.0	.44	.35	.30	.43	.35	.30	.42	.35	.30	.41	.34	.29	.40	.34	.29	.27
10.0	.40	.32	.27	.40	.32	.27	.39	.32	.27	.38	.31	.27	.37	.31	.27	.25



C Range: 0 - 360DEG  
 C Interval: 30.0DEG  
 Test Speed: HIGH  
 Temperature:25.3°C  
 Operators:DAMIN  
 Test Date:2026-02-02

γ Range: 0 - 90DEG  
 γ Interval: 5.0DEG  
 Test System:EVERFINE GO-2000B\_V1 SYSTEM V2.00.488  
 Humidity:65.0%  
 Test Distance:6.144m [K=1.0000]  
 Remarks:

**WEC AND CCEC**

Test:U:120.92V I:0.0969A P:11.608W PF:0.9907 Freq:60.00Hz								
Lamp Flux:856.032x1 lm								
NAME: LS-SMC-5-C29-11W-5CCT-WH			TYPE:			WEIGHT:		
SPEC.:			DIM.:			SERIAL No.: 1#27K		
MFR.: YOURZOR			SUR.: 0.110			Shielding Angle:		

$\rho_{CC}$	80%			70%			50%			30%			10%			0
$\rho_w$	50%	30%	10%	50%	30%	10%	50%	30%	10%	50%	30%	10%	50%	30%	10%	0
$\rho_{fc}$	20%			20%			20%			20%			20%			0
RCR	RCR:Room Cavity Ratio						Wall Exitance Coefficients (WEC)									
0.0																
1.0	.306	.174	.055	.299	.170	.054	.286	.164	.052	.273	.158	.051	.262	.152	.049	
2.0	.287	.158	.048	.281	.155	.048	.270	.150	.047	.259	.145	.045	.249	.141	.044	
3.0	.266	.142	.042	.261	.140	.042	.250	.136	.041	.241	.132	.040	.232	.128	.040	
4.0	.246	.128	.038	.241	.126	.037	.232	.123	.037	.223	.120	.036	.216	.117	.036	
5.0	.228	.116	.034	.223	.115	.033	.215	.112	.033	.208	.110	.033	.201	.107	.032	
6.0	.211	.106	.030	.207	.105	.030	.200	.103	.030	.193	.101	.030	.187	.099	.029	
7.0	.197	.097	.028	.193	.096	.027	.187	.095	.027	.181	.093	.027	.175	.091	.027	
8.0	.184	.090	.025	.181	.089	.025	.175	.088	.025	.170	.086	.025	.165	.085	.025	
9.0	.173	.083	.023	.170	.083	.023	.165	.081	.023	.160	.080	.023	.155	.079	.023	
10.0	.162	.078	.022	.160	.077	.022	.155	.076	.021	.151	.075	.021	.147	.074	.021	

$\rho_{CC}$	80%			70%			50%			30%			10%			0
$\rho_w$	50%	30%	10%	50%	30%	10%	50%	30%	10%	50%	30%	10%	50%	30%	10%	0
$\rho_{fc}$	20%			20%			20%			20%			20%			0
RCR	RCR:Room Cavity Ratio						Ceiling Cavity Exitance Coefficients (CCEC)									
0.0	.190	.190	.190	.163	.163	.163	.111	.111	.111	.064	.064	.064	.020	.020	.020	
1.0	.180	.156	.135	.154	.134	.116	.105	.092	.080	.061	.053	.047	.019	.017	.015	
2.0	.172	.132	.099	.147	.114	.085	.101	.079	.059	.058	.046	.035	.019	.015	.011	
3.0	.164	.114	.075	.140	.099	.065	.096	.068	.046	.056	.040	.027	.018	.013	.009	
4.0	.156	.101	.059	.134	.087	.051	.092	.061	.036	.053	.036	.021	.017	.012	.007	
5.0	.149	.090	.048	.128	.078	.041	.088	.055	.029	.051	.032	.017	.016	.010	.006	
6.0	.141	.082	.039	.122	.071	.034	.084	.050	.024	.049	.029	.014	.016	.010	.005	
7.0	.135	.075	.033	.116	.065	.029	.080	.046	.021	.046	.027	.012	.015	.009	.004	
8.0	.128	.069	.029	.110	.060	.025	.076	.042	.018	.044	.025	.011	.014	.008	.004	
9.0	.122	.064	.025	.105	.056	.022	.073	.039	.016	.042	.023	.009	.014	.008	.003	
10.0	.117	.060	.023	.100	.052	.020	.070	.037	.014	.041	.022	.008	.013	.007	.003	

C Range: 0 - 360DEG  
 C Interval: 30.0DEG  
 Test Speed: HIGH  
 Temperature:25.3°C  
 Operators:DAMIN  
 Test Date:2026-02-02

$\gamma$  Range: 0 - 90DEG  
 $\gamma$  Interval: 5.0DEG  
 Test System:EVERFINE GO-2000B\_V1 SYSTEM V2.00.488  
 Humidity:65.0%  
 Test Distance:6.144m [K=1.0000]  
 Remarks:

**UGR(Unified Glare Rating) Table**

Test:U:120.92V I:0.0969A P:11.608W PF:0.9907 Freq:60.00Hz										
Lamp Flux:856.032x1 lm										
NAME: LS-SMC-5-C29-11W-5CCT-WH					TYPE:			WEIGHT:		
SPEC.:					DIM.:			SERIAL No.: 1#27K		
MFR.: YOURZOR					SUR.: 0.110			Shielding Angle:		
ceiling/cavity	0.7	0.7	0.5	0.5	0.3	0.7	0.7	0.5	0.5	0.3
walls	0.5	0.3	0.5	0.3	0.3	0.5	0.3	0.5	0.3	0.3
working plane	0.2	0.2	0.2	0.2	0.2	0.2	0.2	0.2	0.2	0.2
Room dimensions	Viewed crosswise					Viewed endwise				
x = 2H y = 2H	24.3	25.8	24.6	26.0	26.2	24.5	26.0	24.7	26.2	26.4
3H	25.6	26.9	25.8	27.2	27.4	25.8	27.2	26.1	27.4	27.7
4H	26.0	27.3	26.3	27.6	27.8	26.3	27.6	26.6	27.9	28.1
6H	26.2	27.5	26.5	27.7	28.0	26.6	27.9	27.0	28.2	28.4
8H	26.2	27.4	26.5	27.6	27.9	26.7	27.9	27.0	28.1	28.4
12H	26.1	27.3	26.5	27.6	27.9	26.6	27.8	27.0	28.1	28.4
4H 2H	24.8	26.1	25.1	26.4	26.6	24.9	26.3	25.3	26.5	26.8
3H	26.2	27.4	26.6	27.7	28.0	26.4	27.6	26.8	27.9	28.2
4H	26.8	27.8	27.1	28.1	28.5	27.1	28.1	27.4	28.4	28.8
6H	27.0	28.0	27.4	28.3	28.7	27.5	28.4	27.9	28.8	29.1
8H	27.0	27.9	27.4	28.2	28.6	27.5	28.4	27.9	28.7	29.1
12H	27.0	27.8	27.4	28.2	28.6	27.5	28.3	27.9	28.7	29.1
8H 4H	26.9	27.8	27.3	28.2	28.6	27.2	28.1	27.6	28.4	28.8
6H	27.3	28.0	27.7	28.4	28.8	27.7	28.4	28.1	28.8	29.2
8H	27.2	27.9	27.7	28.3	28.8	27.7	28.4	28.2	28.8	29.2
12H	27.2	27.8	27.7	28.2	28.7	27.8	28.3	28.2	28.8	29.2
12H 4H	26.9	27.7	27.3	28.1	28.5	27.2	28.0	27.6	28.4	28.8
6H	27.3	27.9	27.7	28.3	28.8	27.6	28.3	28.1	28.7	29.2
8H	27.2	27.8	27.7	28.2	28.7	27.7	28.3	28.2	28.7	29.2
Variations with the observer position at spacings(CIE Pub.117):										
S = 1.0H	+ 0.2 / - 0.2					+ 0.2 / - 0.2				
1.5H	+ 0.2 / - 0.3					+ 0.1 / - 0.2				
2.0H	+ 0.4 / - 0.4					+ 0.4 / - 0.4				

CIE Pub.117, 856.0 lm Total Lamp Luminous Flux Correct (8log(F/F0) = -0.5)  
 Area: 0.0095 m2

C Range: 0 - 360DEG	γ Range: 0 - 90DEG
C Interval: 30.0DEG	γ Interval: 5.0DEG
Test Speed: HIGH	Test System:EVERFINE GO-2000B_V1 SYSTEM V2.00.488
Temperature:25.3°C	Humidity:65.0%
Operators:DAMIN	Test Distance:6.144m [K=1.0000]
Test Date:2026-02-02	Remarks:

**UTILIZATION FACTORS TABLE**

Test:U:120.92V I:0.0969A P:11.608W PF:0.9907 Freq:60.00Hz Lamp Flux:856.032x1 lm		
NAME: LS-SMC-5-C29-11W-5CCT-WH	TYPE:	WEIGHT:
SPEC.:	DIM.:	SERIAL No.: 1#27K
MFR.: YOURZOR	SUR.: 0.110	Shielding Angle:

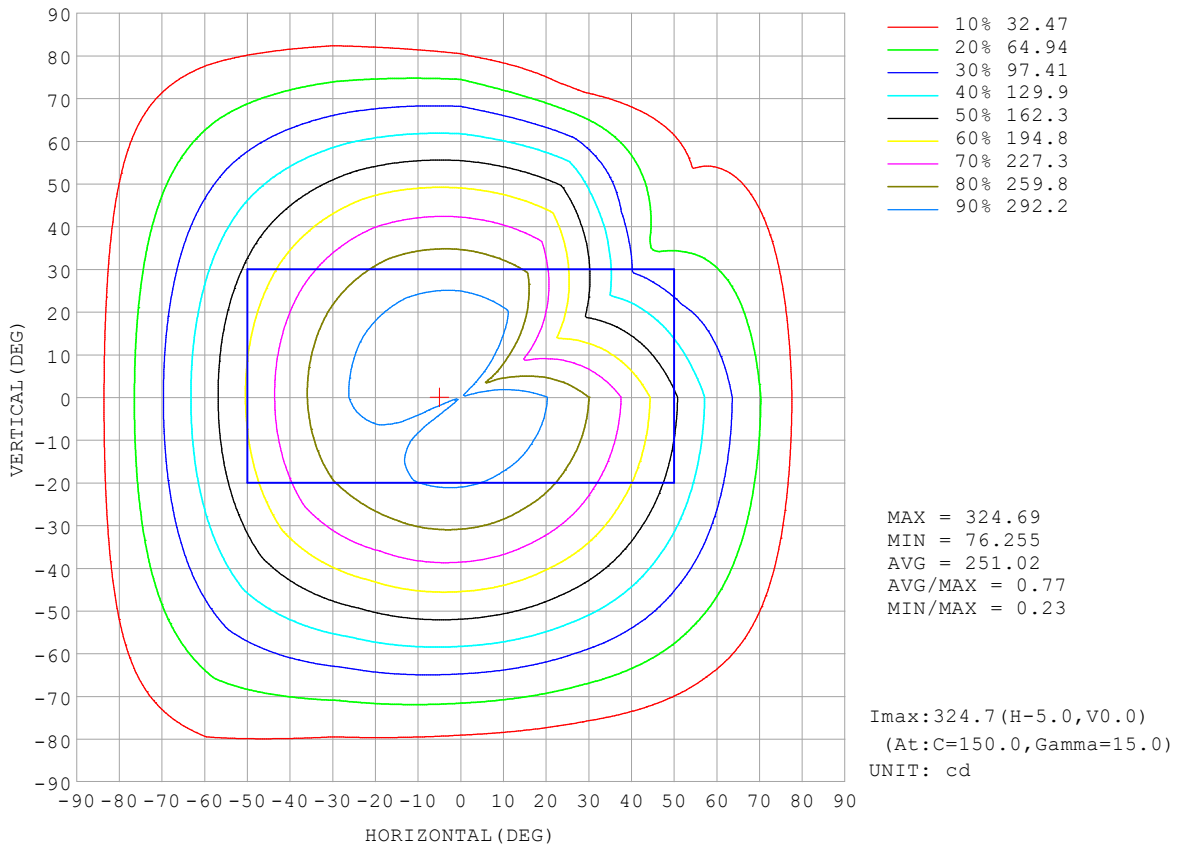
REFLECTANCE										
Ceiling	0.8	0.8	0.8	0.7	0.7	0.7	0.5	0.5	0.5	0
Walls	0.7	0.5	0.3	0.7	0.5	0.3	0.7	0.5	0.3	0
Working plane	0.2	0.2	0.2	0.2	0.2	0.2	0.2	0.2	0.2	0
ROOM INDEX	UTILIZATION FACTORS (PERCENT) $k(RI) \times RCR = 5$									
k = 0.60	58	47	40	58	47	40	57	46	40	33
0.80	68	57	50	67	57	50	66	56	49	42
1.00	77	66	59	76	65	58	73	67	58	51
1.25	84	74	66	82	73	66	80	71	65	58
1.50	89	79	72	87	78	72	84	76	71	63
2.00	95	87	81	94	86	80	90	84	78	71
2.50	99	92	86	97	90	85	93	88	83	75
3.00	103	96	90	100	94	89	96	91	87	79
4.00	106	101	96	104	99	95	100	96	92	83
5.00	109	104	100	106	102	98	102	98	95	86
ROOM INDEX	UF(total)									Direct
According to DIN EN 13032-2 2004			Suspended				SHRNOM = 1.25			

C Range: 0 - 360DEG  
 C Interval: 30.0DEG  
 Test Speed: HIGH  
 Temperature:25.3°C  
 Operators:DAMIN  
 Test Date:2026-02-02

$\gamma$  Range: 0 - 90DEG  
 $\gamma$  Interval: 5.0DEG  
 Test System:EVERFINE GO-2000B\_V1 SYSTEM V2.00.488  
 Humidity:65.0%  
 Test Distance:6.144m [K=1.0000]  
 Remarks:

**ISOCANDELA DIAGRAM**

Test:U:120.92V I:0.0969A P:11.608W PF:0.9907 Freq:60.00Hz Lamp Flux:856.032x1 lm		
NAME: LS-SMC-5-C29-11W-5CCT-WH	TYPE:	WEIGHT:
SPEC.:	DIM.:	SERIAL No.: 1#27K
MFR.: YOURZOR	SUR.: 0.110	Shielding Angle:

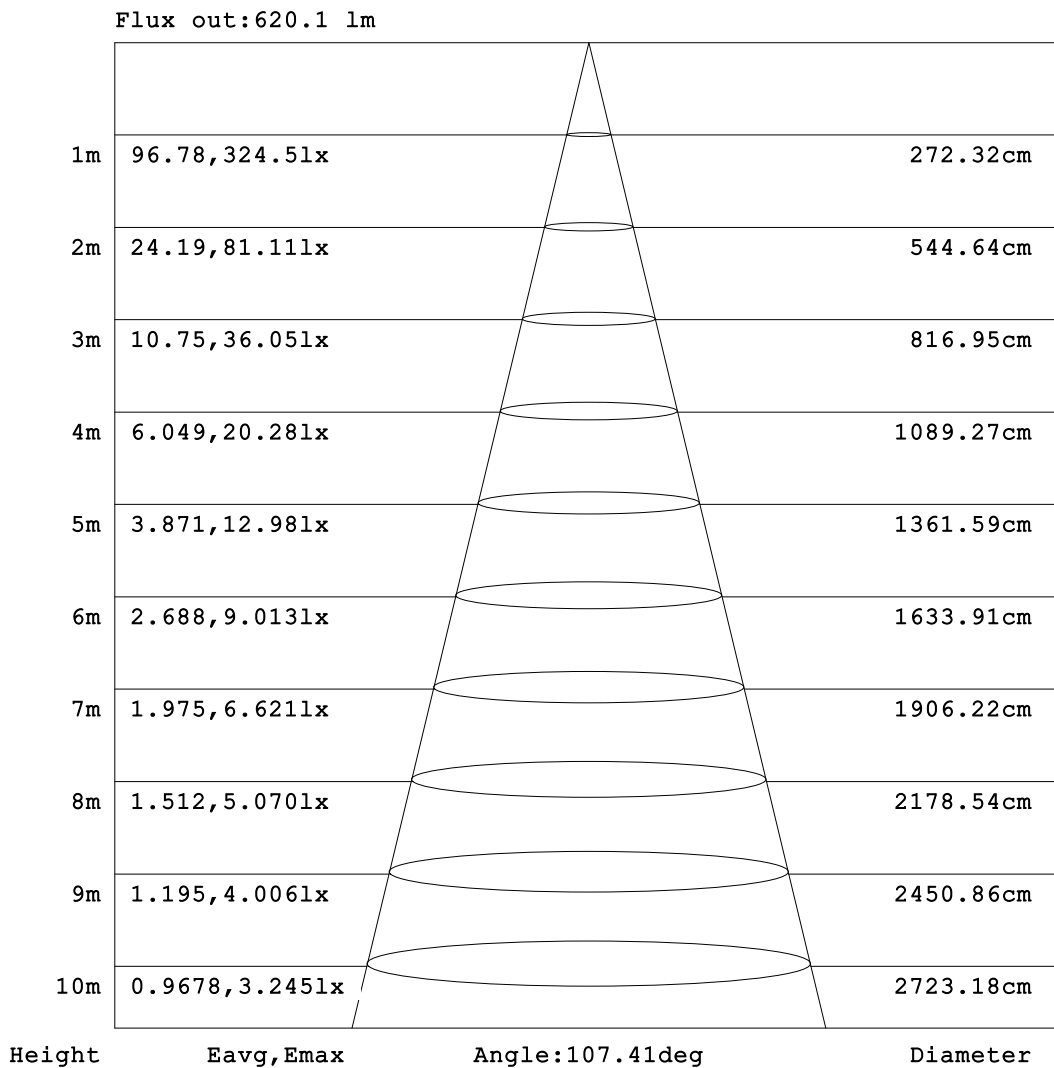


C Range: 0 - 360DEG  
 C Interval: 30.0DEG  
 Test Speed: HIGH  
 Temperature: 25.3°C  
 Operators: DAMIN  
 Test Date: 2026-02-02

γ Range: 0 - 90DEG  
 γ Interval: 5.0DEG  
 Test System: EVERFINE GO-2000B\_V1 SYSTEM V2.00.488  
 Humidity: 65.0%  
 Test Distance: 6.144m [K=1.0000]  
 Remarks:

**AAI Figure**

Test:U:120.92V I:0.0969A P:11.608W PF:0.9907 Freq:60.00Hz Lamp Flux:856.032x1 lm		
NAME: LS-SMC-5-C29-11W-5CCT-WH	TYPE:	WEIGHT:
SPEC.:	DIM.:	SERIAL No.: 1#27K
MFR.: YOURZOR	SUR.: 0.110	Shielding Angle:



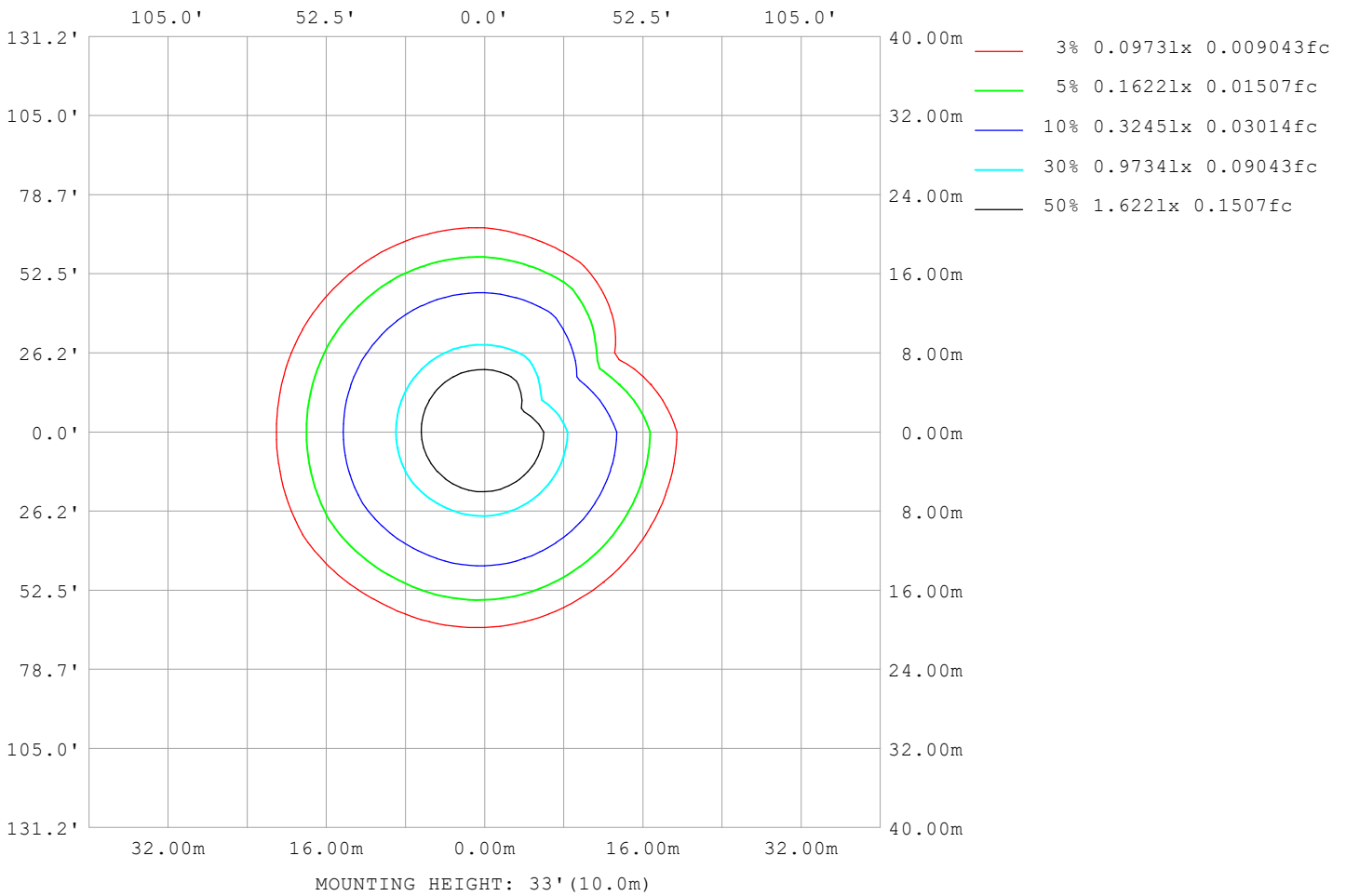
Note:The Curves indicate the illuminated area and the average illumination when the luminaire is at different distance.

C Range: 0 - 360DEG  
C Interval: 30.0DEG  
Test Speed: HIGH  
Temperature:25.3°C  
Operators:DAMIN  
Test Date:2026-02-02

γ Range: 0 - 90DEG  
γ Interval: 5.0DEG  
Test System:EVERFINE GO-2000B\_V1 SYSTEM V2.00.488  
Humidity:65.0%  
Test Distance:6.144m [K=1.0000]  
Remarks:

**ISOLUX DIAGRAM**

Test:U:120.92V I:0.0969A P:11.608W PF:0.9907 Freq:60.00Hz Lamp Flux:856.032x1 lm		
NAME: LS-SMC-5-C29-11W-5CCT-WH	TYPE:	WEIGHT:
SPEC.:	DIM.:	SERIAL No.: 1#27K
MFR.: YOURZOR	SUR.: 0.110	Shielding Angle:



C Range: 0 - 360DEG  
 C Interval: 30.0DEG  
 Test Speed: HIGH  
 Temperature:25.3°C  
 Operators:DAMIN  
 Test Date:2026-02-02

γ Range: 0 - 90DEG  
 γ Interval: 5.0DEG  
 Test System:EVERFINE GO-2000B\_V1 SYSTEM V2.00.488  
 Humidity:65.0%  
 Test Distance:6.144m [K=1.0000]  
 Remarks:

**LED Avg.L Report**

Test:U:120.92V I:0.0969A P:11.608W PF:0.9907 Freq:60.00Hz Lamp Flux:856.032x1 lm		
NAME: LS-SMC-5-C29-11W-5CCT-WH	TYPE:	WEIGHT:
SPEC.:	DIM.:	SERIAL No.: 1#27K
MFR.: YOURZOR	SUR.: 0.110	Shielding Angle:

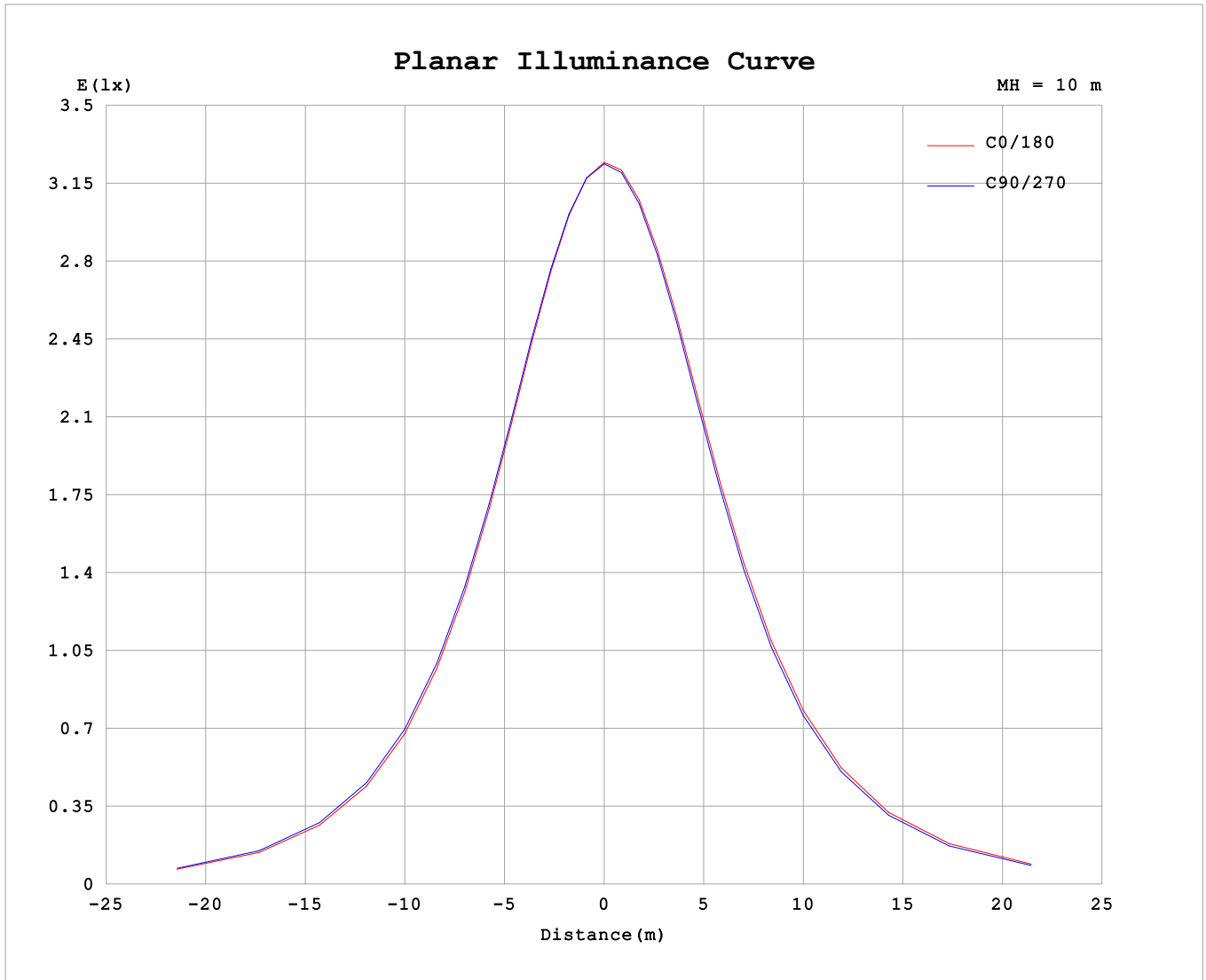
AvgL	cd/m2
L_0~180 (65) av	25555
L_0~180 (75) av	22748
L_0~180 (85) av	17008
L_90~270 (65) av	25360
L_90~270 (75) av	22119
L_90~270 (85) av	14060
L_45 (65) av	24390
L_45 (75) av	20947
L_45 (85) av	17576

Standard: GB/T 29293-2012

C Range: 0 - 360DEG  
 C Interval: 30.0DEG  
 Test Speed: HIGH  
 Temperature:25.3℃  
 Operators:DAMIN  
 Test Date:2026-02-02

γ Range: 0 - 90DEG  
 γ Interval: 5.0DEG  
 Test System:EVERFINE GO-2000B\_V1 SYSTEM V2.00.488  
 Humidity:65.0%  
 Test Distance:6.144m [K=1.0000]  
 Remarks:

**Planar Illuminance Curve**



C Range: 0 - 360DEG  
 C Interval: 30.0DEG  
 Test Speed: HIGH  
 Temperature: 25.3°C  
 Operators: DAMIN  
 Test Date: 2026-02-02

γ Range: 0 - 90DEG  
 γ Interval: 5.0DEG  
 Test System: EVERFINE GO-2000B\_V1 SYSTEM V2.00.488  
 Humidity: 65.0%  
 Test Distance: 6.144m [K=1.0000]  
 Remarks:

