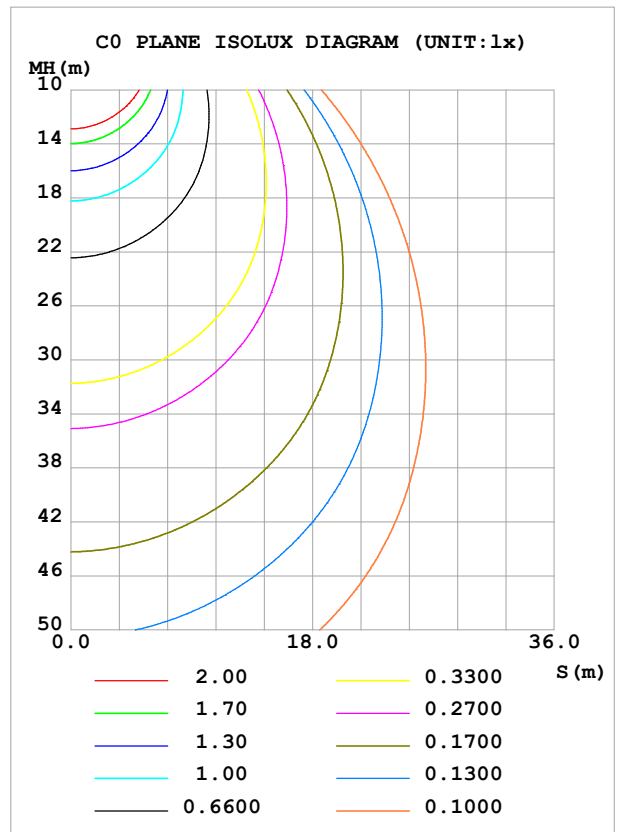
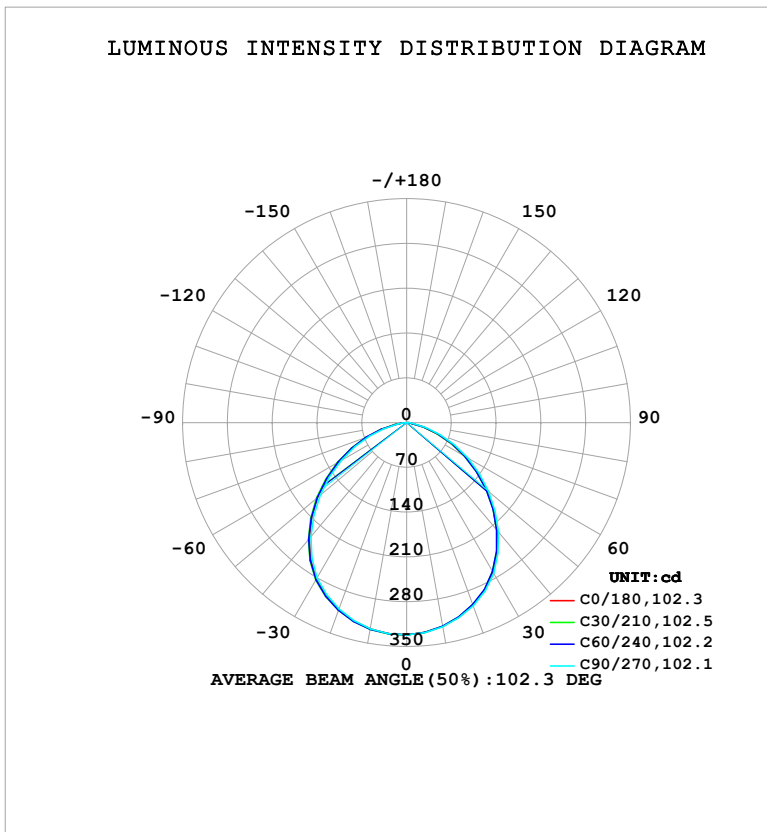


**LUMINAIRE PHOTOMETRIC TEST REPORT**

Test:U:120.96V I:0.0982A P:11.764W PF:0.9904 Freq:60.00Hz Lamp Flux:826.746x1 lm		
NAME: LS-SMC-5-C28-11W-5CCT-WH	TYPE:	WEIGHT:
SPEC.:	DIM.:	SERIAL No.: 1#27K
MFR.: YOURZOR	SUR.: 0.11	Shielding Angle:

DATA OF LAMP		PHOTOMETRIC DATA			
MSBEMC-5-C28-11W-5CCT-WH-27K		Imax (cd)	331.7	S/MH (C0/180)	1.26
NOMINAL POWER (W)	11	LOR (%)	100.0	S/MH (C90/270)	1.25
RATED VOLTAGE (V)	120	TOTAL FLUX (lm)	826.75	$\eta$ UP, DN (C0-180)	0.0,48.8
NOMINAL FLUX (lm)	826.746	CIE CLASS	DIRECT	$\eta$ UP, DN (C180-360)	0.0,51.2
LAMPS INSIDE	1	$\eta$ up (%)	0.0	CIBSE SHR NOM	1.25
TEST VOLTAGE (V)	120	$\eta$ down (%)	100.0	CIBSE SHR MAX	1.35



C Range: 0 - 360DEG  
 C Interval: 30.0DEG  
 Test Speed: HIGH  
 Temperature: 25.3°C  
 Operators: DAMIN  
 Test Date: 2026-01-30

$\gamma$  Range: 0 - 90DEG  
 $\gamma$  Interval: 5.0DEG  
 Test System: EVERFINE GO-2000B\_V1 SYSTEM V2.00.488  
 Humidity: 65.0%  
 Test Distance: 6.144m [K=1.0000]  
 Remarks:

ZONAL FLUX DIAGRAM

ZONAL FLUX DIAGRAM:

$\gamma$	C0	C45	C90	C135	C180	C225	C270	C315	$\gamma$	$\Phi$ zone	$\Phi$ total	%lum, lamp
10	323.6	323.2	324.1	325.8	327.3	328.0	327.0	325.3	0- 10	31.37	31.37	3.79,3.79
20	303.6	302.6	304.4	307.7	311.0	312.0	309.8	306.3	10- 20	89.68	121.0	14.6,14.6
30	269.9	268.7	272.1	277.5	282.6	284.0	280.1	274.2	20- 30	135.1	256.1	31,31
40	220.1	219.0	223.3	230.3	237.2	238.7	232.9	225.4	30- 40	158.5	414.6	50.1,50.1
50	163.2	162.4	167.3	174.4	182.1	183.3	176.8	168.7	40- 50	154.9	569.5	68.9,68.9
60	104.9	104.6	109.9	116.4	123.8	124.6	118.1	110.1	50- 60	128.0	697.5	84.4,84.4
70	50.49	51.14	56.34	61.77	67.45	67.99	62.19	55.10	60- 70	85.28	782.7	94.7,94.7
80	9.050	9.191	11.33	15.54	18.81	18.75	14.12	10.13	70- 80	37.17	819.9	99.2,99.2
90	0.4059	0.4198	0.3995	0.5054	1.156	0.9343	0.4125	0.4381	80- 90	6.824	826.7	100,100
100									90-100			
110									100-110			
120									110-120			
130									120-130			
140									130-140			
150									140-150			
160									150-160			
170									160-170			
180									170-180			
DEG	LUMINOUS INTENSITY:cd									UNIT:lm		

Conical surface Flux(90deg): 494.1 lm

%lum = 59.8%

%lamp = 59.8%

Conical surface Flux(130deg): 746.06 lm

%lum = 90.2%

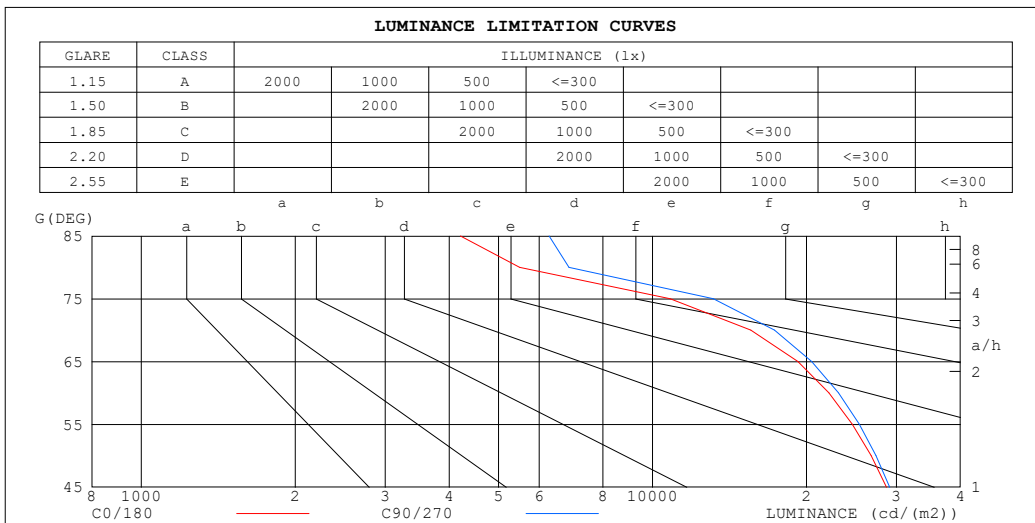
%lamp = 90.2%

C Range: 0 - 360DEG  
 C Interval: 30.0DEG  
 Test Speed: HIGH  
 Temperature:25.3°C  
 Operators:DAMIN  
 Test Date:2026-01-30

$\gamma$  Range: 0 - 90DEG  
 $\gamma$  Interval: 5.0DEG  
 Test System:EVERFINE GO-2000B\_V1 SYSTEM V2.00.488  
 Humidity:65.0%  
 Test Distance:6.144m [K=1.0000]  
 Remarks:

**LUMINANCE LIMITATION CURVES**

Test:U:120.96V I:0.0982A P:11.764W PF:0.9904 Freq:60.00Hz Lamp Flux:826.746x1 lm		
NAME: LS-SMC-5-C28-11W-5CCT-WH	TYPE:	WEIGHT:
SPEC.:	DIM.:	SERIAL No.: 1#27K
MFR.: YOURZOR	SUR.: 0.11	Shielding Angle:



LUMINANCE cd/(m2)		
G (DEG)	C0/180	C90/270
85	4212	6272
80	5498	6862
75	10822	13156
70	15573	17320
65	19229	20478
60	22130	23117
55	24600	25381
50	26785	27366
45	28673	29094

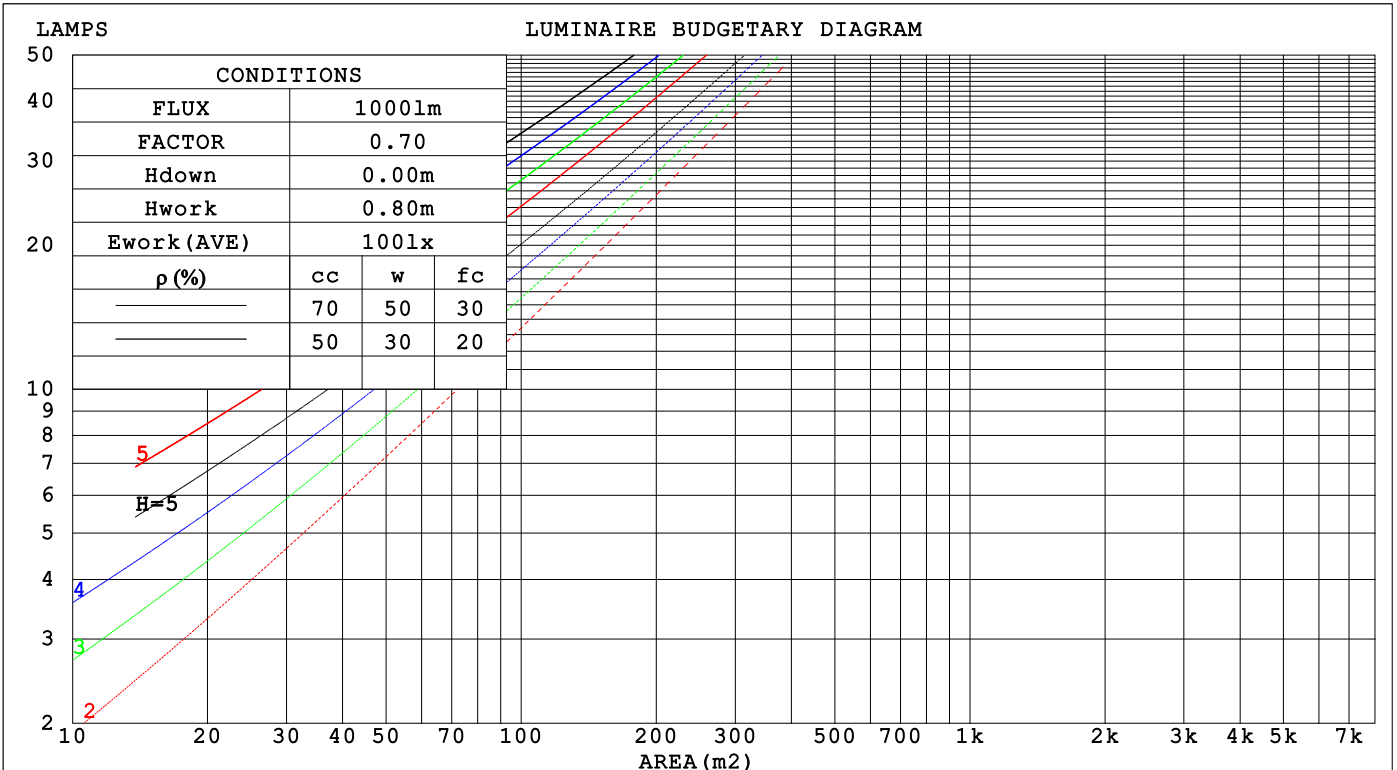
C Range: 0 - 360DEG  
 C Interval: 30.0DEG  
 Test Speed: HIGH  
 Temperature:25.3°C  
 Operators:DAMIN  
 Test Date:2026-01-30

γ Range: 0 - 90DEG  
 γ Interval: 5.0DEG  
 Test System:EVERFINE GO-2000B\_V1 SYSTEM V2.00.488  
 Humidity:65.0%  
 Test Distance:6.144m [K=1.0000]  
 Remarks:

**CU AND LUMINAIRE BUDGETARY ESTIMATE DIAGRAM**

Test:U:120.96V I:0.0982A P:11.764W PF:0.9904 Freq:60.00Hz Lamp Flux:826.746x1 lm		
NAME: LS-SMC-5-C28-11W-5CCT-WH	TYPE:	WEIGHT:
SPEC.:	DIM.:	SERIAL No.: 1#27K
MFR.: YOURZOR	SUR.: 0.11	Shielding Angle:

ρcc	80%			70%			50%			30%			10%			0
ρw	50%	30%	10%	50%	30%	10%	50%	30%	10%	50%	30%	10%	50%	30%	10%	0
ρfc	20%			20%			20%			20%			20%			0
RCR	RCR:Room Cavity Ratio															
	Coefficients of Utilization(CU)															
0.0	1.19	1.19	1.19	1.16	1.16	1.16	1.11	1.11	1.11	1.06	1.06	1.06	1.02	1.02	1.02	.00
1.0	1.05	1.02	.98	1.03	.90	.97	.99	.96	.93	.95	.93	.91	.92	.90	.88	.86
2.0	.93	.87	.81	.91	.85	.80	.88	.83	.78	.84	.80	.77	.81	.78	.75	.73
3.0	.82	.75	.68	.81	.74	.68	.78	.72	.67	.75	.70	.65	.72	.68	.64	.62
4.0	.73	.65	.59	.72	.64	.58	.69	.63	.57	.67	.61	.57	.65	.60	.56	.54
5.0	.66	.57	.51	.65	.57	.50	.63	.55	.50	.61	.54	.49	.59	.53	.49	.47
6.0	.59	.51	.45	.58	.50	.44	.57	.49	.44	.55	.49	.44	.53	.48	.43	.41
7.0	.54	.45	.40	.53	.45	.39	.52	.44	.39	.50	.44	.39	.49	.43	.39	.37
8.0	.49	.41	.35	.49	.41	.35	.47	.40	.35	.46	.40	.35	.45	.39	.35	.33
9.0	.45	.37	.32	.45	.37	.32	.44	.37	.32	.43	.36	.32	.42	.36	.31	.30
10.0	.42	.34	.29	.41	.34	.29	.40	.34	.29	.39	.33	.29	.39	.33	.29	.27



C Range: 0 - 360DEG  
 C Interval: 30.0DEG  
 Test Speed: HIGH  
 Temperature:25.3°C  
 Operators:DAMIN  
 Test Date:2026-01-30

γ Range: 0 - 90DEG  
 γ Interval: 5.0DEG  
 Test System:EVERFINE GO-2000B\_V1 SYSTEM V2.00.488  
 Humidity:65.0%  
 Test Distance:6.144m [K=1.0000]  
 Remarks:

**WEC AND CCEC**

Test:U:120.96V I:0.0982A P:11.764W PF:0.9904 Freq:60.00Hz								
Lamp Flux:826.746x1 lm								
NAME: LS-SMC-5-C28-11W-5CCT-WH			TYPE:			WEIGHT:		
SPEC.:			DIM.:			SERIAL No.: 1#27K		
MFR.: YOURZOR			SUR.: 0.11			Shielding Angle:		

$\rho_{CC}$	80%			70%			50%			30%			10%			0
$\rho_w$	50%	30%	10%	50%	30%	10%	50%	30%	10%	50%	30%	10%	50%	30%	10%	0
$\rho_{fc}$	20%			20%			20%			20%			20%			0
RCR	RCR:Room Cavity Ratio						Wall Exitance Coefficients (WEC)									
0.0																
1.0	.279	.159	.050	.272	.155	.049	.259	.148	.047	.247	.142	.046	.236	.137	.044	
2.0	.268	.147	.045	.262	.144	.044	.251	.139	.043	.240	.135	.042	.230	.130	.041	
3.0	.252	.134	.040	.246	.132	.040	.236	.128	.039	.227	.124	.038	.218	.121	.037	
4.0	.235	.122	.036	.230	.120	.036	.221	.117	.035	.213	.114	.034	.205	.111	.034	
5.0	.219	.112	.032	.215	.110	.032	.207	.108	.032	.199	.105	.031	.192	.103	.031	
6.0	.204	.102	.029	.201	.101	.029	.193	.099	.029	.187	.097	.029	.181	.095	.028	
7.0	.191	.095	.027	.188	.094	.027	.181	.092	.026	.176	.090	.026	.170	.088	.026	
8.0	.179	.088	.025	.176	.087	.025	.171	.085	.024	.165	.084	.024	.160	.082	.024	
9.0	.169	.082	.023	.166	.081	.023	.161	.080	.023	.156	.078	.022	.151	.077	.022	
10.0	.159	.076	.021	.157	.076	.021	.152	.074	.021	.148	.073	.021	.144	.072	.021	

$\rho_{CC}$	80%			70%			50%			30%			10%			0
$\rho_w$	50%	30%	10%	50%	30%	10%	50%	30%	10%	50%	30%	10%	50%	30%	10%	0
$\rho_{fc}$	20%			20%			20%			20%			20%			0
RCR	RCR:Room Cavity Ratio						Ceiling Cavity Exitance Coefficients (CCEC)									
0.0	.190	.190	.190	.163	.163	.163	.111	.111	.111	.064	.064	.064	.020	.020	.020	
1.0	.178	.156	.137	.152	.134	.118	.104	.092	.081	.060	.053	.047	.019	.017	.015	
2.0	.169	.132	.101	.145	.114	.087	.099	.079	.061	.057	.046	.036	.018	.015	.012	
3.0	.161	.114	.077	.138	.098	.067	.095	.068	.047	.055	.040	.028	.018	.013	.009	
4.0	.153	.101	.060	.132	.087	.053	.090	.061	.037	.052	.036	.022	.017	.012	.007	
5.0	.146	.090	.049	.125	.078	.043	.086	.054	.030	.050	.032	.018	.016	.010	.006	
6.0	.139	.082	.040	.120	.071	.035	.082	.050	.025	.048	.029	.015	.015	.010	.005	
7.0	.133	.075	.034	.114	.065	.030	.079	.045	.021	.046	.027	.013	.015	.009	.004	
8.0	.126	.069	.030	.109	.060	.026	.075	.042	.018	.044	.025	.011	.014	.008	.004	
9.0	.120	.064	.026	.104	.056	.023	.072	.039	.016	.042	.023	.010	.014	.008	.003	
10.0	.115	.060	.023	.099	.052	.020	.069	.036	.014	.040	.022	.008	.013	.007	.003	

C Range: 0 - 360DEG  
 C Interval: 30.0DEG  
 Test Speed: HIGH  
 Temperature:25.3°C  
 Operators:DAMIN  
 Test Date:2026-01-30

$\gamma$  Range: 0 - 90DEG  
 $\gamma$  Interval: 5.0DEG  
 Test System:EVERFINE GO-2000B\_V1 SYSTEM V2.00.488  
 Humidity:65.0%  
 Test Distance:6.144m [K=1.0000]  
 Remarks:

**UGR(Unified Glare Rating) Table**

Test:U:120.96V I:0.0982A P:11.764W PF:0.9904 Freq:60.00Hz Lamp Flux:826.746x1 lm		
NAME: LS-SMC-5-C28-11W-5CCT-WH	TYPE:	WEIGHT:
SPEC.:	DIM.:	SERIAL No.: 1#27K
MFR.: YOURZOR	SUR.: 0.11	Shielding Angle:

ceiling/cavity	0.7	0.7	0.5	0.5	0.3	0.7	0.7	0.5	0.5	0.3
walls	0.5	0.3	0.5	0.3	0.3	0.5	0.3	0.5	0.3	0.3
working plane	0.2	0.2	0.2	0.2	0.2	0.2	0.2	0.2	0.2	0.2

Room dimensions	Viewed crosswise					Viewed endwise				
x = 2H y = 2H	24.2	25.7	24.5	25.9	26.1	24.3	25.8	24.6	26.0	26.2
3H	25.1	26.4	25.4	26.6	26.9	25.3	26.6	25.6	26.9	27.1
4H	25.2	26.5	25.5	26.7	27.0	25.5	26.8	25.8	27.0	27.3
6H	25.2	26.4	25.5	26.6	26.9	25.5	26.7	25.8	27.0	27.2
8H	25.1	26.3	25.5	26.6	26.9	25.5	26.6	25.8	26.9	27.2
12H	25.1	26.2	25.5	26.5	26.8	25.5	26.6	25.8	26.9	27.2
4H 2H	24.6	25.9	24.9	26.1	26.4	24.7	26.0	25.0	26.2	26.5
3H	25.6	26.7	25.9	27.0	27.3	25.8	26.9	26.2	27.2	27.5
4H	25.8	26.8	26.2	27.1	27.4	26.1	27.1	26.4	27.4	27.7
6H	25.8	26.7	26.2	27.0	27.4	26.1	27.0	26.5	27.3	27.7
8H	25.8	26.6	26.2	27.0	27.3	26.1	26.9	26.5	27.3	27.7
12H	25.7	26.5	26.2	26.9	27.3	26.1	26.8	26.5	27.2	27.6
8H 4H	25.8	26.6	26.2	27.0	27.4	26.1	26.9	26.5	27.2	27.6
6H	25.8	26.5	26.3	26.9	27.3	26.1	26.8	26.6	27.2	27.6
8H	25.8	26.4	26.3	26.9	27.3	26.1	26.7	26.6	27.2	27.6
12H	25.8	26.3	26.3	26.8	27.3	26.2	26.7	26.6	27.1	27.6
12H 4H	25.8	26.5	26.2	26.9	27.3	26.0	26.8	26.4	27.2	27.6
6H	25.8	26.4	26.3	26.8	27.3	26.1	26.7	26.5	27.1	27.6
8H	25.8	26.3	26.3	26.8	27.2	26.1	26.6	26.6	27.1	27.6

Variations with the observer position at spacings(CIE Pub.117):		
S = 1.0H	+ 0.3 / - 0.3	+ 0.2 / - 0.3
1.5H	+ 0.2 / - 0.4	+ 0.2 / - 0.4
2.0H	+ 0.7 / - 0.7	+ 0.7 / - 0.8

CIE Pub.117, 826.7 lm Total Lamp Luminous Flux Correct (8log(F/F0) = -0.7)  
Area: 0.0095 m2

C Range: 0 - 360DEG  
C Interval: 30.0DEG  
Test Speed: HIGH  
Temperature:25.3°C  
Operators:DAMIN  
Test Date:2026-01-30

γ Range: 0 - 90DEG  
γ Interval: 5.0DEG  
Test System:EVERFINE GO-2000B\_V1 SYSTEM V2.00.488  
Humidity:65.0%  
Test Distance:6.144m [K=1.0000]  
Remarks:

**UTILIZATION FACTORS TABLE**

Test:U:120.96V I:0.0982A P:11.764W PF:0.9904 Freq:60.00Hz Lamp Flux:826.746x1 lm		
NAME: LS-SMC-5-C28-11W-5CCT-WH	TYPE:	WEIGHT:
SPEC.:	DIM.:	SERIAL No.: 1#27K
MFR.: YOURZOR	SUR.: 0.11	Shielding Angle:

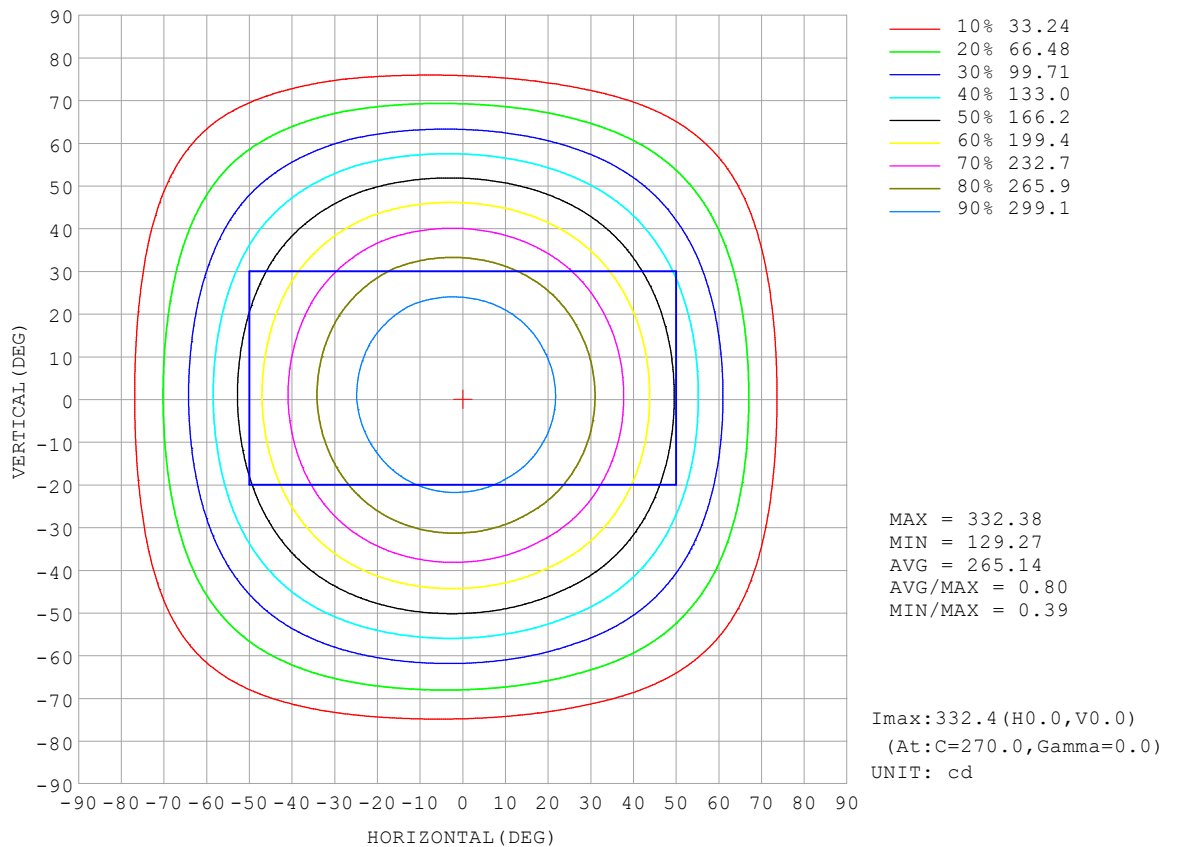
REFLECTANCE										
Ceiling	0.8	0.8	0.8	0.7	0.7	0.7	0.5	0.5	0.5	0
Walls	0.7	0.5	0.3	0.7	0.5	0.3	0.7	0.5	0.3	0
Working plane	0.2	0.2	0.2	0.2	0.2	0.2	0.2	0.2	0.2	0
ROOM INDEX	UTILIZATION FACTORS (PERCENT) $k(RI) \times RCR = 5$									
k = 0.60	61	49	43	60	49	43	59	49	42	36
0.80	71	60	53	70	59	53	68	59	52	46
1.00	79	69	62	78	68	62	76	69	61	54
1.25	86	76	70	85	76	69	82	74	69	62
1.50	91	82	75	89	81	75	86	79	74	67
2.00	97	90	84	96	88	83	92	86	82	74
2.50	101	94	88	99	93	88	95	90	86	78
3.00	104	98	93	102	96	92	98	93	90	82
4.00	108	103	98	105	101	97	101	98	94	86
5.00	110	106	102	108	104	100	103	100	97	88
ROOM INDEX	UF(total)									Direct
According to DIN EN 13032-2 2004			Suspended				SHRNOM = 1.25			

C Range: 0 - 360DEG  
 C Interval: 30.0DEG  
 Test Speed: HIGH  
 Temperature:25.3°C  
 Operators:DAMIN  
 Test Date:2026-01-30

$\gamma$  Range: 0 - 90DEG  
 $\gamma$  Interval: 5.0DEG  
 Test System:EVERFINE GO-2000B\_V1 SYSTEM V2.00.488  
 Humidity:65.0%  
 Test Distance:6.144m [K=1.0000]  
 Remarks:

**ISOCANDELA DIAGRAM**

Test:U:120.96V I:0.0982A P:11.764W PF:0.9904 Freq:60.00Hz Lamp Flux:826.746x1 lm		
NAME: LS-SMC-5-C28-11W-5CCT-WH	TYPE:	WEIGHT:
SPEC.:	DIM.:	SERIAL No.: 1#27K
MFR.: YOURZOR	SUR.: 0.11	Shielding Angle:

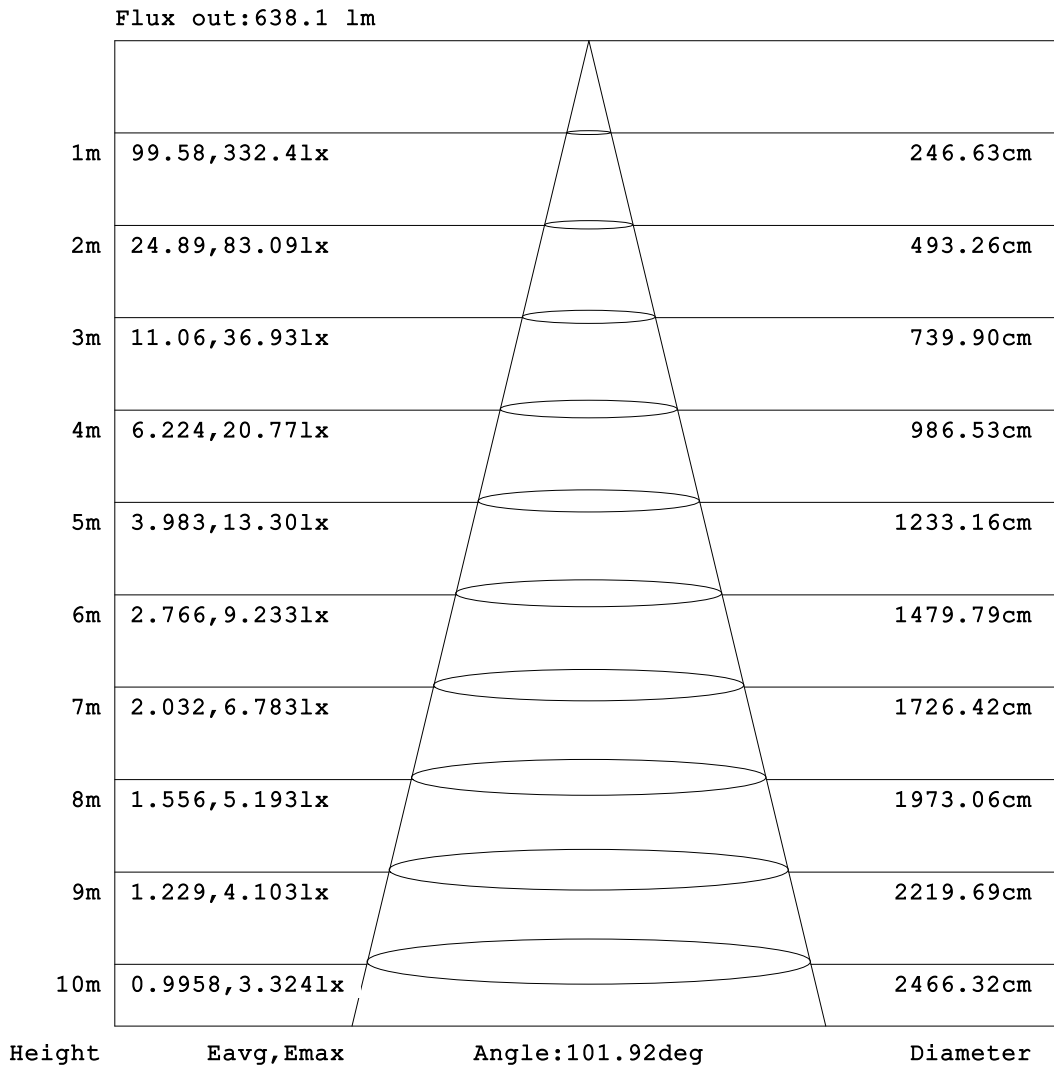


C Range: 0 - 360DEG  
 C Interval: 30.0DEG  
 Test Speed: HIGH  
 Temperature:25.3°C  
 Operators:DAMIN  
 Test Date:2026-01-30

γ Range: 0 - 90DEG  
 γ Interval: 5.0DEG  
 Test System:EVERFINE GO-2000B\_V1 SYSTEM V2.00.488  
 Humidity:65.0%  
 Test Distance:6.144m [K=1.0000]  
 Remarks:

**AAI Figure**

Test:U:120.96V I:0.0982A P:11.764W PF:0.9904 Freq:60.00Hz Lamp Flux:826.746x1 lm		
NAME: LS-SMC-5-C28-11W-5CCT-WH	TYPE:	WEIGHT:
SPEC.:	DIM.:	SERIAL No.: 1#27K
MFR.: YOURZOR	SUR.: 0.11	Shielding Angle:



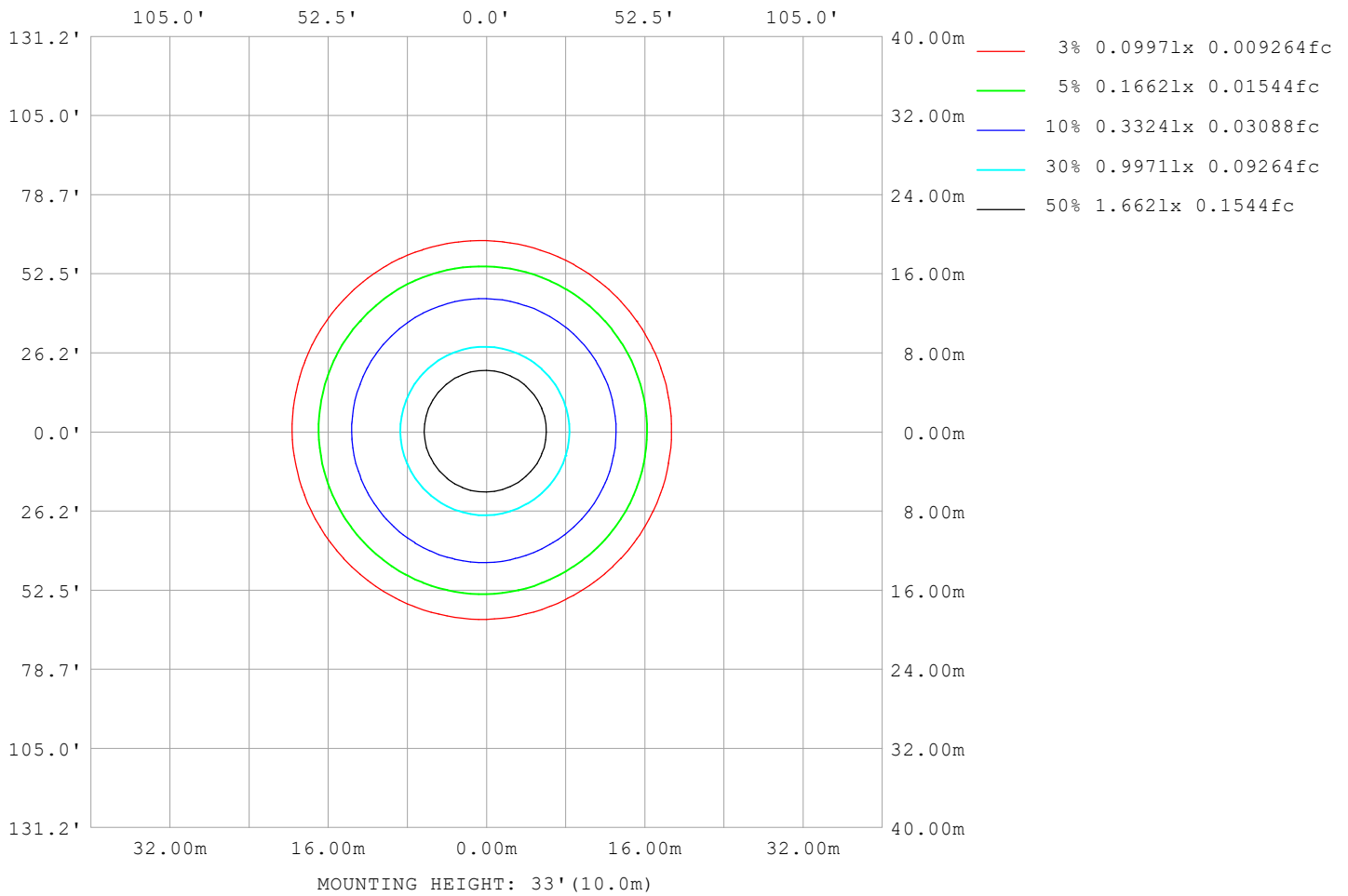
Note:The Curves indicate the illuminated area and the average illumination when the luminaire is at different distance.

C Range: 0 - 360DEG  
C Interval: 30.0DEG  
Test Speed: HIGH  
Temperature:25.3°C  
Operators:DAMIN  
Test Date:2026-01-30

γ Range: 0 - 90DEG  
γ Interval: 5.0DEG  
Test System:EVERFINE GO-2000B\_V1 SYSTEM V2.00.488  
Humidity:65.0%  
Test Distance:6.144m [K=1.0000]  
Remarks:

**ISOLUX DIAGRAM**

Test:U:120.96V I:0.0982A P:11.764W PF:0.9904 Freq:60.00Hz Lamp Flux:826.746x1 lm		
NAME: LS-SMC-5-C28-11W-5CCT-WH	TYPE:	WEIGHT:
SPEC.:	DIM.:	SERIAL No.: 1#27K
MFR.: YOURZOR	SUR.: 0.11	Shielding Angle:



C Range: 0 - 360DEG  
 C Interval: 30.0DEG  
 Test Speed: HIGH  
 Temperature:25.3°C  
 Operators:DAMIN  
 Test Date:2026-01-30

γ Range: 0 - 90DEG  
 γ Interval: 5.0DEG  
 Test System:EVERFINE GO-2000B\_V1 SYSTEM V2.00.488  
 Humidity:65.0%  
 Test Distance:6.144m [K=1.0000]  
 Remarks:

**LED Avg.L Report**

Test:U:120.96V I:0.0982A P:11.764W PF:0.9904 Freq:60.00Hz Lamp Flux:826.746x1 lm		
NAME: LS-SMC-5-C28-11W-5CCT-WH	TYPE:	WEIGHT:
SPEC.:	DIM.:	SERIAL No.: 1#27K
MFR.: YOURZOR	SUR.: 0.11	Shielding Angle:

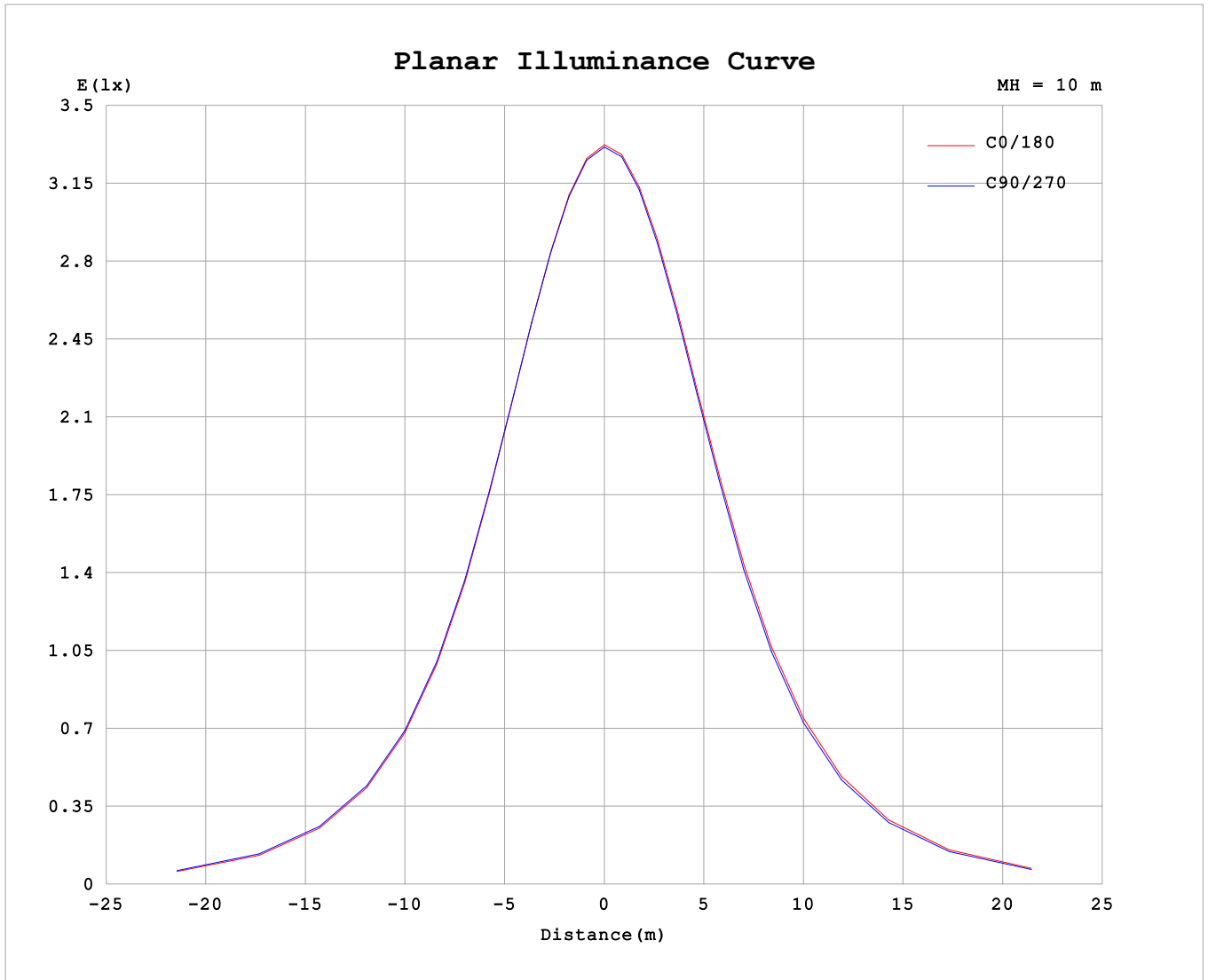
AvgL	cd/m2
L_0~180 (65) av	21445
L_0~180 (75) av	13891
L_0~180 (85) av	6631
L_90~270 (65) av	21391
L_90~270 (75) av	14085
L_90~270 (85) av	6799
L_45 (65) av	21360
L_45 (75) av	13949
L_45 (85) av	6704

Standard: GB/T 29293-2012

C Range: 0 - 360DEG  
 C Interval: 30.0DEG  
 Test Speed: HIGH  
 Temperature:25.3°C  
 Operators:DAMIN  
 Test Date:2026-01-30

γ Range: 0 - 90DEG  
 γ Interval: 5.0DEG  
 Test System:EVERFINE GO-2000B\_V1 SYSTEM V2.00.488  
 Humidity:65.0%  
 Test Distance:6.144m [K=1.0000]  
 Remarks:

**Planar Illuminance Curve**



C Range: 0 - 360DEG  
 C Interval: 30.0DEG  
 Test Speed: HIGH  
 Temperature: 25.3°C  
 Operators: DAMIN  
 Test Date: 2026-01-30

γ Range: 0 - 90DEG  
 γ Interval: 5.0DEG  
 Test System: EVERFINE GO-2000B\_V1 SYSTEM V2.00.488  
 Humidity: 65.0%  
 Test Distance: 6.144m [K=1.0000]  
 Remarks:

