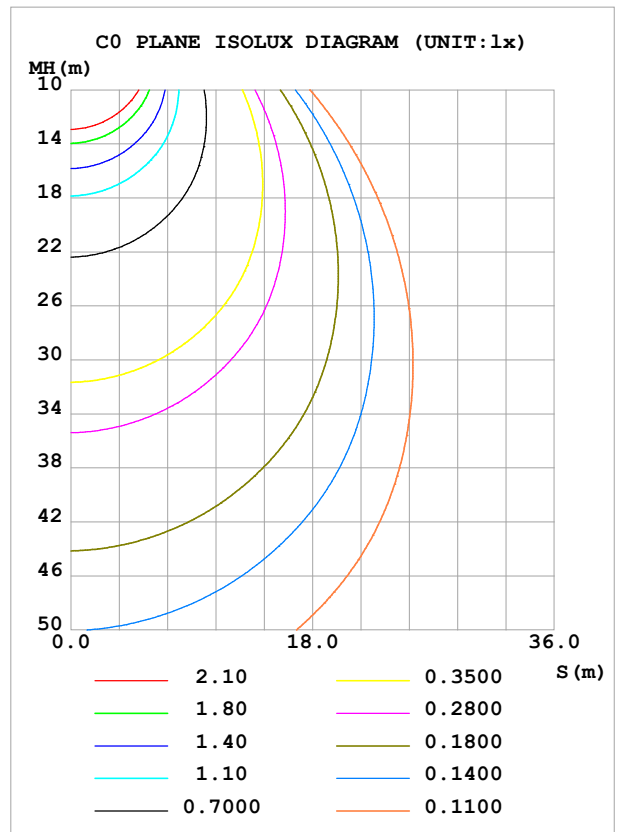
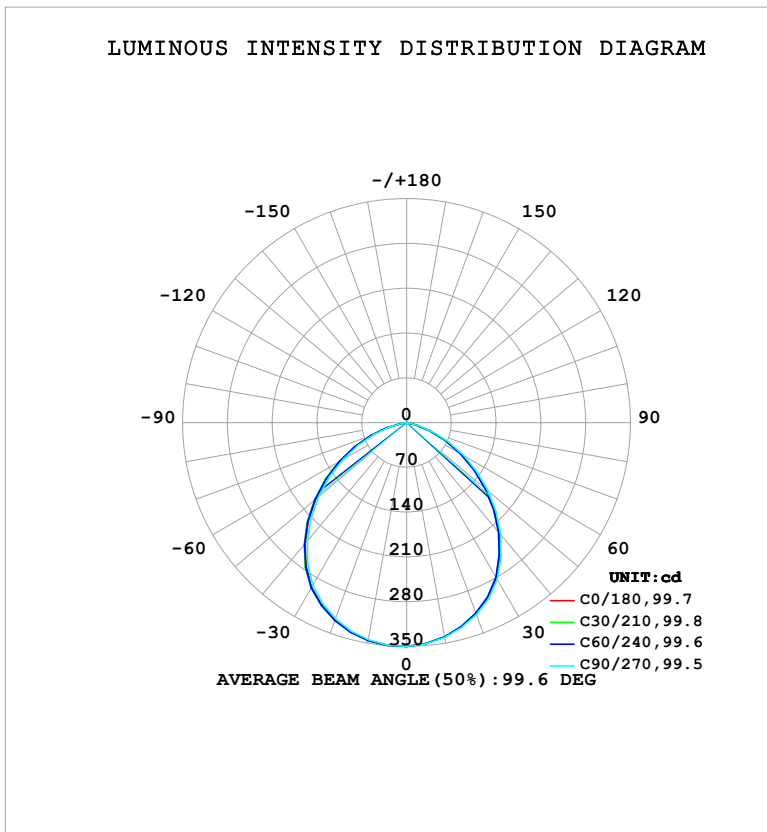


LUMINAIRE PHOTOMETRIC TEST REPORT

Test:U:120.96V I:0.0983A P:11.773W PF:0.9904 Freq:60.00Hz Lamp Flux:824.166x1 lm		
NAME: LS-SMC-5-C28-11W-5CCT-BL	TYPE:	WEIGHT:
SPEC.:	DIM.:	SERIAL No.: 1#-27K
MFR.: YOURZOR	SUR.: 0.11	Shielding Angle:

DATA OF LAMP		PHOTOMETRIC DATA			
MSBEMC-5-C28-11W-5CCT-BL-27K		Imax (cd)	349.7	S/MH (C0/180)	1.26
NOMINAL POWER (W)	11	LOR (%)	100.0	S/MH (C90/270)	1.24
RATED VOLTAGE (V)	120	TOTAL FLUX (lm)	824.17	η UP, DN (C0-180)	0.0,48.3
NOMINAL FLUX (lm)	824.166	CIE CLASS	DIRECT	η UP, DN (C180-360)	0.0,51.7
LAMPS INSIDE	1	η up (%)	0.0	CIBSE SHR NOM	1.25
TEST VOLTAGE (V)	120	η down (%)	100.0	CIBSE SHR MAX	1.35



C Range: 0 - 360DEG
 C Interval: 30.0DEG
 Test Speed: HIGH
 Temperature:25.3°C
 Operators:DAMIN
 Test Date:2026-01-30

γ Range: 0 - 90DEG
 γ Interval: 5.0DEG
 Test System:EVERFINE GO-2000B_V1 SYSTEM V2.00.488
 Humidity:65.0%
 Test Distance:6.144m [K=1.0000]
 Remarks:

ZONAL FLUX DIAGRAM

ZONAL FLUX DIAGRAM:

γ	C0	C45	C90	C135	C180	C225	C270	C315	γ	Φ zone	Φ total	%lum, lamp
10	340.4	339.9	341.0	343.1	345.6	346.1	344.5	342.8	0- 10	33.06	33.06	4.01,4.01
20	317.9	316.8	319.1	323.0	327.9	329.0	325.8	322.3	10- 20	94.36	127.4	15.5,15.5
30	280.7	279.2	283.1	289.5	297.0	298.6	293.7	287.4	20- 30	141.6	269.0	32.6,32.6
40	225.0	223.4	228.9	237.1	247.1	248.8	241.8	233.7	30- 40	164.8	433.8	52.6,52.6
50	161.7	160.2	166.8	175.2	186.0	187.7	179.7	171.0	40- 50	158.2	592.0	71.8,71.8
60	97.62	96.45	103.6	111.6	121.1	122.6	114.8	106.4	50- 60	126.3	718.3	87.2,87.2
70	39.14	38.73	45.41	52.31	59.63	60.62	53.88	46.61	60- 70	78.04	796.3	96.6,96.6
80	0.3584	0.3375	0.8030	5.025	9.239	9.375	4.654	0.9443	70- 80	26.49	822.8	99.8,99.8
90	0.3406	0.3606	0.3390	0.2893	0.3377	0.3253	0.3272	0.3645	80- 90	1.328	824.2	100,100
100									90-100			
110									100-110			
120									110-120			
130									120-130			
140									130-140			
150									140-150			
160									150-160			
170									160-170			
180									170-180			
DEG	LUMINOUS INTENSITY:cd									UNIT:lm		

Conical surface Flux(90deg): 515.44 lm

%lum = 62.5%

%lamp = 62.5%

Conical surface Flux(130deg): 763.94 lm

%lum = 92.7%

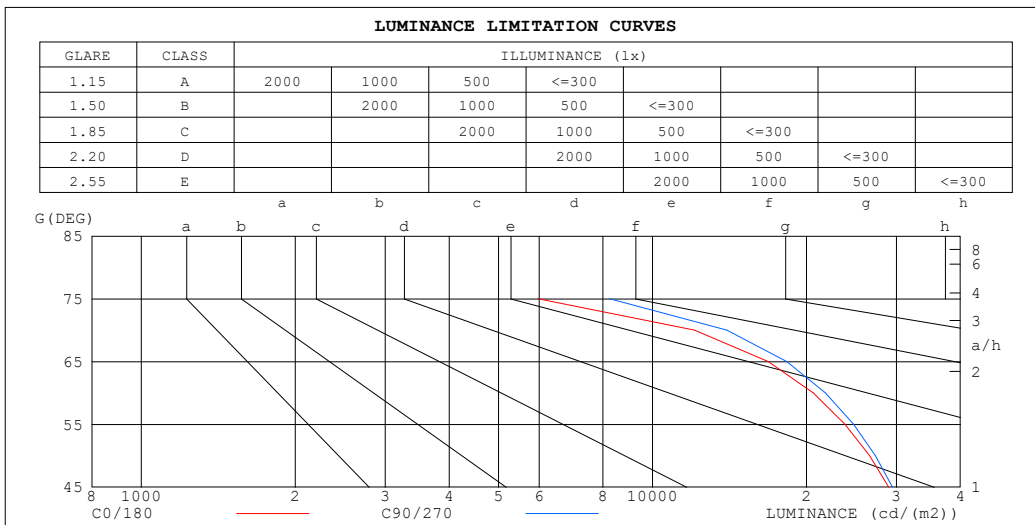
%lamp = 92.7%

C Range: 0 - 360DEG
 C Interval: 30.0DEG
 Test Speed: HIGH
 Temperature:25.3°C
 Operators:DAMIN
 Test Date:2026-01-30

γ Range: 0 - 90DEG
 γ Interval: 5.0DEG
 Test System:EVERFINE GO-2000B_V1 SYSTEM V2.00.488
 Humidity:65.0%
 Test Distance:6.144m [K=1.0000]
 Remarks:

LUMINANCE LIMITATION CURVES

Test:U:120.96V I:0.0983A P:11.773W PF:0.9904 Freq:60.00Hz Lamp Flux:824.166x1 lm		
NAME: LS-SMC-5-C28-11W-5CCT-BL	TYPE:	WEIGHT:
SPEC.:	DIM.:	SERIAL No.: 1#-27K
MFR.: YOURZOR	SUR.: 0.11	Shielding Angle:



LUMINANCE cd/(m2)		
G (DEG)	C0/180	C90/270
85	359	352
80	218	486
75	5970	8247
70	12084	13967
65	16824	18289
60	20616	21794
55	23795	24730
50	26560	27293
45	28970	29506

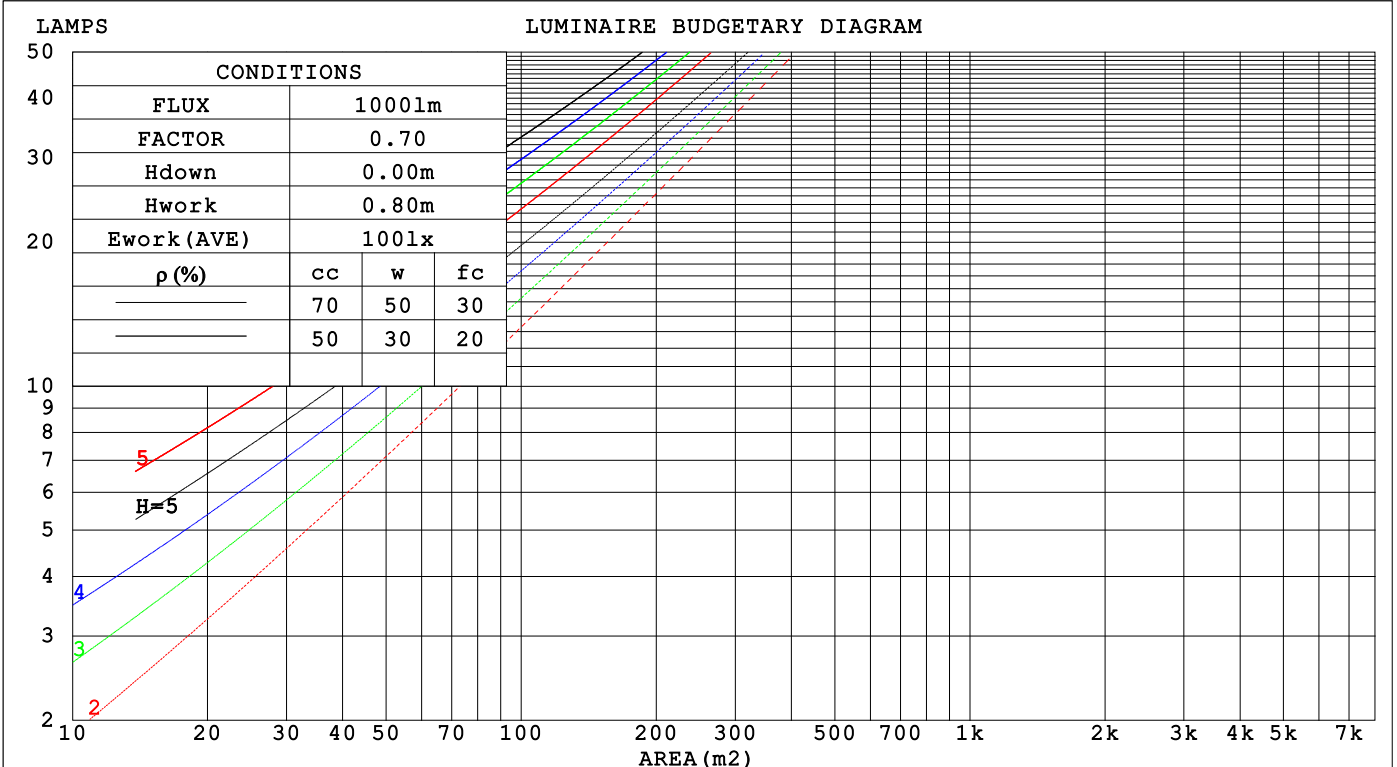
C Range: 0 - 360DEG
 C Interval: 30.0DEG
 Test Speed: HIGH
 Temperature:25.3°C
 Operators:DAMIN
 Test Date:2026-01-30

γ Range: 0 - 90DEG
 γ Interval: 5.0DEG
 Test System:EVERFINE GO-2000B_V1 SYSTEM V2.00.488
 Humidity:65.0%
 Test Distance:6.144m [K=1.0000]
 Remarks:

CU AND LUMINAIRE BUDGETARY ESTIMATE DIAGRAM

Test:U:120.96V I:0.0983A P:11.773W PF:0.9904 Freq:60.00Hz Lamp Flux:824.166x1 lm		
NAME: LS-SMC-5-C28-11W-5CCT-BL	TYPE:	WEIGHT:
SPEC.:	DIM.:	SERIAL No.: 1#-27K
MFR.: YOURZOR	SUR.: 0.11	Shielding Angle:

ρcc	80%			70%			50%			30%			10%			0
	ρw	50%	30%	10%	50%	30%	10%	50%	30%	10%	50%	30%	10%	50%	30%	10%
ρfc	20%			20%			20%			20%			20%			0
RCR	RCR:Room Cavity Ratio															
	Coefficients of Utilization(CU)															
0.0	1.19	1.19	1.19	1.16	1.16	1.16	1.11	1.11	1.11	1.06	1.06	1.06	1.02	1.02	1.02	1.00
1.0	1.06	1.03	.99	1.04	1.01	.98	.90	.97	.95	.96	.94	.92	.93	.91	.89	.87
2.0	.94	.88	.83	.92	.87	.82	.89	.84	.80	.86	.82	.78	.83	.79	.77	.75
3.0	.84	.76	.70	.82	.75	.70	.79	.73	.68	.76	.71	.67	.74	.70	.66	.64
4.0	.75	.67	.60	.73	.66	.60	.71	.64	.59	.69	.63	.58	.67	.62	.58	.56
5.0	.67	.59	.53	.66	.58	.52	.64	.57	.52	.62	.56	.51	.60	.55	.51	.49
6.0	.61	.52	.46	.60	.52	.46	.58	.51	.46	.56	.50	.45	.55	.49	.45	.43
7.0	.55	.47	.41	.54	.47	.41	.53	.46	.41	.52	.45	.40	.50	.44	.40	.38
8.0	.51	.42	.37	.50	.42	.37	.49	.42	.37	.47	.41	.36	.46	.40	.36	.34
9.0	.47	.39	.33	.46	.38	.33	.45	.38	.33	.44	.37	.33	.43	.37	.33	.31
10.0	.43	.35	.30	.42	.35	.30	.42	.35	.30	.41	.34	.30	.40	.34	.30	.28



C Range: 0 - 360DEG
 C Interval: 30.0DEG
 Test Speed: HIGH
 Temperature:25.3°C
 Operators:DAMIN
 Test Date:2026-01-30

γ Range: 0 - 90DEG
 γ Interval: 5.0DEG
 Test System:EVERFINE GO-2000B_V1 SYSTEM V2.00.488
 Humidity:65.0%
 Test Distance:6.144m [K=1.0000]
 Remarks:

WEC AND CCEC

Test:U:120.96V I:0.0983A P:11.773W PF:0.9904 Freq:60.00Hz Lamp Flux:824.166x1 lm		
NAME: LS-SMC-5-C28-11W-5CCT-BL	TYPE:	WEIGHT:
SPEC.:	DIM.:	SERIAL No.: 1#-27K
MFR.: YOURZOR	SUR.: 0.11	Shielding Angle:

ρ_{CC}	80%			70%			50%			30%			10%			0
ρ_w	50%	30%	10%	50%	30%	10%	50%	30%	10%	50%	30%	10%	50%	30%	10%	0
ρ_{fc}	20%			20%			20%			20%			20%			0
RCR	RCR:Room Cavity Ratio						Wall Exitance Coefficients (WEC)									
0.0																
1.0	.262	.149	.047	.256	.146	.046	.243	.139	.044	.231	.133	.043	.219	.127	.041	
2.0	.256	.140	.043	.250	.138	.042	.239	.133	.041	.228	.128	.040	.219	.124	.039	
3.0	.243	.129	.039	.238	.127	.038	.227	.123	.037	.218	.120	.037	.210	.116	.036	
4.0	.228	.118	.035	.223	.117	.035	.214	.114	.034	.206	.111	.033	.198	.108	.033	
5.0	.213	.109	.032	.209	.107	.031	.201	.105	.031	.194	.102	.030	.187	.100	.030	
6.0	.200	.100	.029	.196	.099	.029	.189	.097	.028	.183	.095	.028	.177	.093	.028	
7.0	.188	.093	.026	.184	.092	.026	.178	.090	.026	.172	.088	.026	.167	.087	.025	
8.0	.176	.086	.024	.173	.085	.024	.168	.084	.024	.162	.082	.024	.157	.081	.024	
9.0	.166	.080	.022	.163	.080	.022	.158	.078	.022	.154	.077	.022	.149	.076	.022	
10.0	.157	.075	.021	.154	.075	.021	.150	.073	.021	.146	.072	.021	.142	.071	.020	

ρ_{CC}	80%			70%			50%			30%			10%			0
ρ_w	50%	30%	10%	50%	30%	10%	50%	30%	10%	50%	30%	10%	50%	30%	10%	0
ρ_{fc}	20%			20%			20%			20%			20%			0
RCR	RCR:Room Cavity Ratio						Ceiling Cavity Exitance Coefficients (CCEC)									
0.0	.190	.190	.190	.163	.163	.163	.111	.111	.111	.064	.064	.064	.020	.020	.020	
1.0	.177	.157	.138	.151	.134	.119	.104	.092	.082	.060	.053	.048	.019	.017	.015	
2.0	.168	.132	.102	.143	.114	.088	.098	.079	.062	.057	.046	.036	.018	.015	.012	
3.0	.159	.114	.078	.137	.098	.068	.094	.068	.048	.054	.040	.028	.017	.013	.009	
4.0	.152	.101	.061	.130	.087	.053	.089	.061	.038	.052	.035	.022	.017	.012	.007	
5.0	.144	.090	.050	.124	.078	.043	.085	.054	.031	.049	.032	.018	.016	.010	.006	
6.0	.138	.081	.041	.118	.071	.036	.082	.049	.025	.047	.029	.015	.015	.009	.005	
7.0	.131	.074	.035	.113	.065	.030	.078	.045	.021	.045	.027	.013	.015	.009	.004	
8.0	.125	.069	.030	.108	.060	.026	.075	.042	.018	.043	.025	.011	.014	.008	.004	
9.0	.119	.064	.026	.103	.055	.023	.071	.039	.016	.042	.023	.010	.013	.008	.003	
10.0	.114	.059	.023	.098	.052	.020	.068	.036	.014	.040	.021	.009	.013	.007	.003	

C Range: 0 - 360DEG
 C Interval: 30.0DEG
 Test Speed: HIGH
 Temperature:25.3°C
 Operators:DAMIN
 Test Date:2026-01-30

γ Range: 0 - 90DEG
 γ Interval: 5.0DEG
 Test System:EVERFINE GO-2000B_V1 SYSTEM V2.00.488
 Humidity:65.0%
 Test Distance:6.144m [K=1.0000]
 Remarks:

UGR(Unified Glare Rating) Table

Test:U:120.96V I:0.0983A P:11.773W PF:0.9904 Freq:60.00Hz Lamp Flux:824.166x1 lm		
NAME: LS-SMC-5-C28-11W-5CCT-BL	TYPE:	WEIGHT:
SPEC.:	DIM.:	SERIAL No.: 1#-27K
MFR.: YOURZOR	SUR.: 0.11	Shielding Angle:

ceiling/cavity	0.7	0.7	0.5	0.5	0.3	0.7	0.7	0.5	0.5	0.3
walls	0.5	0.3	0.5	0.3	0.3	0.5	0.3	0.5	0.3	0.3
working plane	0.2	0.2	0.2	0.2	0.2	0.2	0.2	0.2	0.2	0.2

Room dimensions	Viewed crosswise					Viewed endwise				
x = 2H y = 2H	24.0	25.4	24.2	25.6	25.8	24.1	25.5	24.4	25.7	25.9
3H	24.5	25.8	24.8	26.0	26.3	24.8	26.1	25.1	26.3	26.5
4H	24.5	25.7	24.8	26.0	26.2	24.8	26.1	25.1	26.3	26.5
6H	24.4	25.6	24.7	25.8	26.1	24.7	25.9	25.0	26.1	26.4
8H	24.4	25.5	24.7	25.7	26.0	24.7	25.8	25.0	26.1	26.3
12H	24.3	25.4	24.7	25.7	26.0	24.6	25.7	25.0	26.0	26.3
4H 2H	24.3	25.5	24.6	25.8	26.0	24.4	25.6	24.7	25.9	26.1
3H	24.9	26.0	25.2	26.2	26.5	25.1	26.2	25.5	26.5	26.8
4H	24.9	25.9	25.3	26.2	26.5	25.2	26.2	25.6	26.5	26.8
6H	24.8	25.7	25.2	26.0	26.4	25.1	25.9	25.5	26.3	26.7
8H	24.8	25.6	25.2	25.9	26.3	25.1	25.8	25.5	26.2	26.6
12H	24.7	25.4	25.1	25.8	26.2	25.0	25.7	25.4	26.1	26.5
8H 4H	24.8	25.6	25.2	26.0	26.4	25.1	25.9	25.5	26.3	26.6
6H	24.7	25.4	25.2	25.8	26.2	25.0	25.7	25.5	26.1	26.5
8H	24.7	25.3	25.2	25.7	26.1	25.0	25.5	25.4	26.0	26.4
12H	24.7	25.1	25.1	25.6	26.1	24.9	25.4	25.4	25.9	26.3
12H 4H	24.8	25.5	25.2	25.9	26.3	25.1	25.8	25.5	26.2	26.6
6H	24.7	25.3	25.2	25.7	26.1	25.0	25.5	25.4	26.0	26.4
8H	24.7	25.1	25.1	25.6	26.1	24.9	25.4	25.4	25.9	26.3

Variations with the observer position at spacings(CIE Pub.117):		
S = 1.0H	+ 0.4 / - 0.5	+ 0.4 / - 0.4
1.5H	+ 0.3 / - 0.3	+ 0.2 / - 0.4
2.0H	+ 0.9 / - 1.0	+ 1.0 / - 1.2

CIE Pub.117, 824.2 lm Total Lamp Luminous Flux Correct (8log(F/F0) = -0.7)
Area: 0.0095 m2

C Range: 0 - 360DEG
C Interval: 30.0DEG
Test Speed: HIGH
Temperature:25.3°C
Operators:DAMIN
Test Date:2026-01-30

γ Range: 0 - 90DEG
γ Interval: 5.0DEG
Test System:EVERFINE GO-2000B_V1 SYSTEM V2.00.488
Humidity:65.0%
Test Distance:6.144m [K=1.0000]
Remarks:

UTILIZATION FACTORS TABLE

Test:U:120.96V I:0.0983A P:11.773W PF:0.9904 Freq:60.00Hz Lamp Flux:824.166x1 lm		
NAME: LS-SMC-5-C28-11W-5CCT-BL	TYPE:	WEIGHT:
SPEC.:	DIM.:	SERIAL No.: 1#-27K
MFR.: YOURZOR	SUR.: 0.11	Shielding Angle:

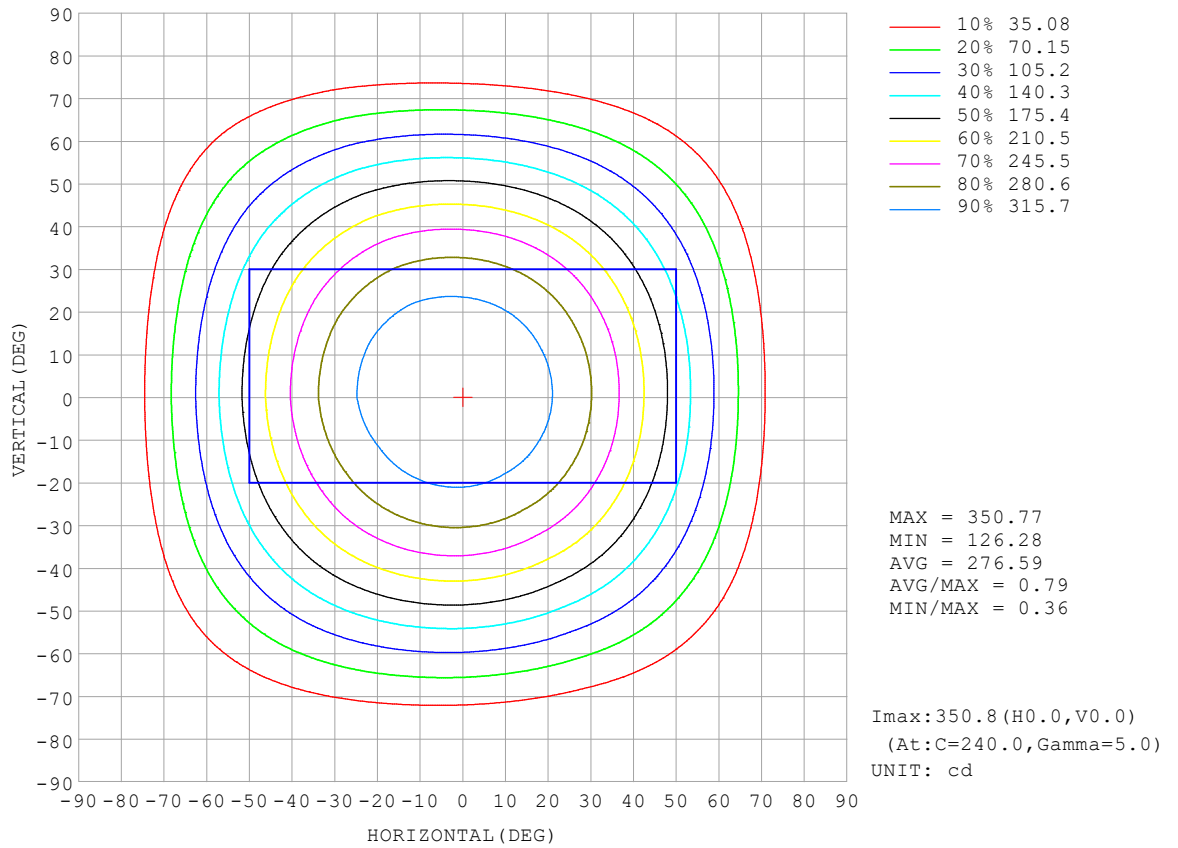
REFLECTANCE										
Ceiling	0.8	0.8	0.8	0.7	0.7	0.7	0.5	0.5	0.5	0
Walls	0.7	0.5	0.3	0.7	0.5	0.3	0.7	0.5	0.3	0
Working plane	0.2	0.2	0.2	0.2	0.2	0.2	0.2	0.2	0.2	0
ROOM INDEX	UTILIZATION FACTORS (PERCENT) $k(RI) \times RCR = 5$									
k = 0.60	62	51	44	61	51	44	60	50	44	38
0.80	72	61	55	71	61	55	69	60	54	48
1.00	81	71	64	80	70	64	77	71	63	57
1.25	88	78	72	86	78	72	84	76	71	64
1.50	92	84	77	91	83	77	88	81	76	69
2.00	99	91	86	97	90	85	94	88	83	76
2.50	102	95	90	100	94	89	96	91	87	80
3.00	105	99	94	103	98	93	99	95	91	83
4.00	108	104	100	106	102	98	102	99	96	87
5.00	111	106	103	108	105	101	104	101	98	90
ROOM INDEX	UF(total)									Direct
According to DIN EN 13032-2 2004			Suspended				SHRNOM = 1.25			

C Range: 0 - 360DEG
 C Interval: 30.0DEG
 Test Speed: HIGH
 Temperature:25.3°C
 Operators:DAMIN
 Test Date:2026-01-30

γ Range: 0 - 90DEG
 γ Interval: 5.0DEG
 Test System:EVERFINE GO-2000B_V1 SYSTEM V2.00.488
 Humidity:65.0%
 Test Distance:6.144m [K=1.0000]
 Remarks:

ISOCANDELA DIAGRAM

Test:U:120.96V I:0.0983A P:11.773W PF:0.9904 Freq:60.00Hz Lamp Flux:824.166x1 lm		
NAME: LS-SMC-5-C28-11W-5CCT-BL	TYPE:	WEIGHT:
SPEC.:	DIM.:	SERIAL No.: 1#-27K
MFR.: YOURZOR	SUR.: 0.11	Shielding Angle:

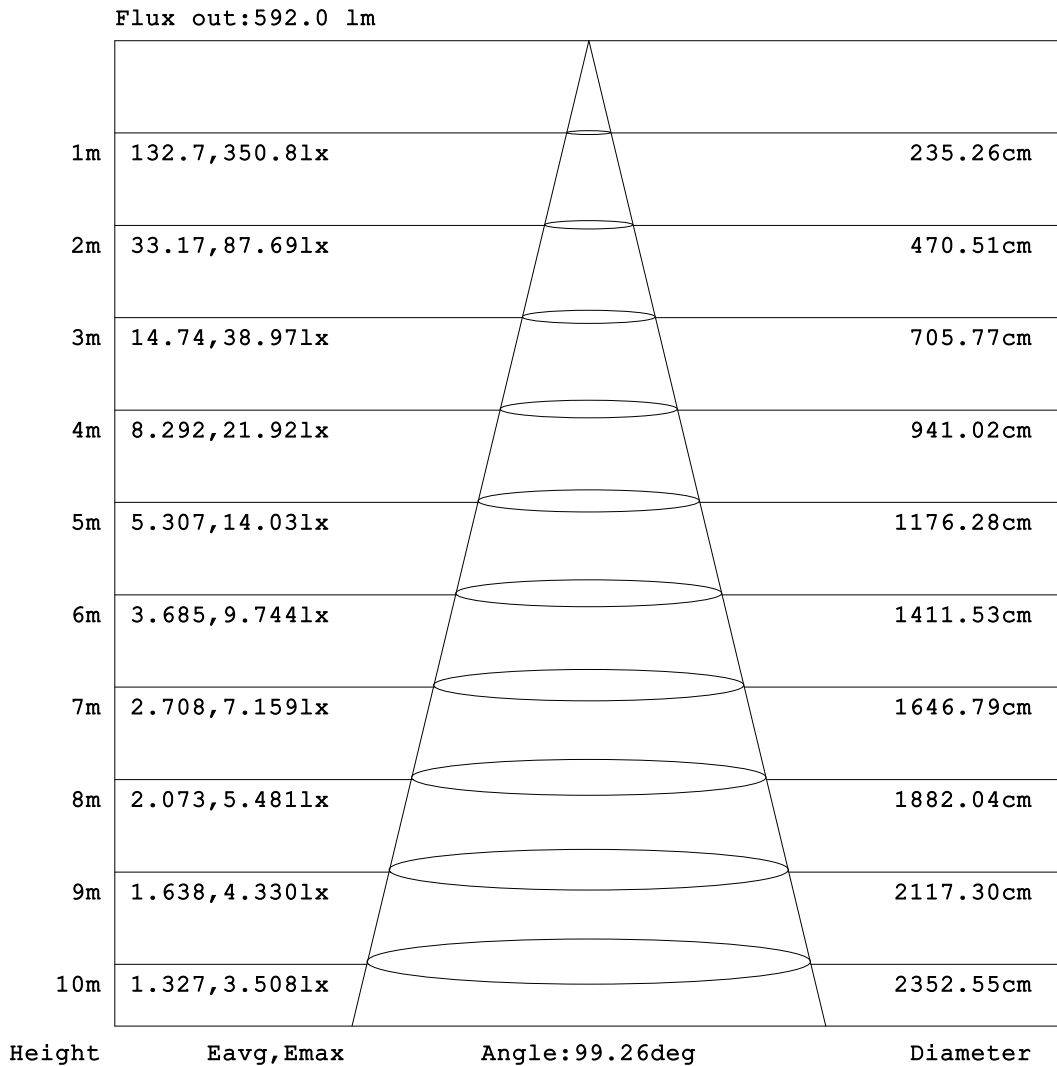


C Range: 0 - 360DEG
 C Interval: 30.0DEG
 Test Speed: HIGH
 Temperature:25.3°C
 Operators:DAMIN
 Test Date:2026-01-30

γ Range: 0 - 90DEG
 γ Interval: 5.0DEG
 Test System:EVERFINE GO-2000B_V1 SYSTEM V2.00.488
 Humidity:65.0%
 Test Distance:6.144m [K=1.0000]
 Remarks:

AAI Figure

Test:U:120.96V I:0.0983A P:11.773W PF:0.9904 Freq:60.00Hz Lamp Flux:824.166x1 lm		
NAME: LS-SMC-5-C28-11W-5CCT-BL	TYPE:	WEIGHT:
SPEC.:	DIM.:	SERIAL No.: 1#-27K
MFR.: YOURZOR	SUR.: 0.11	Shielding Angle:



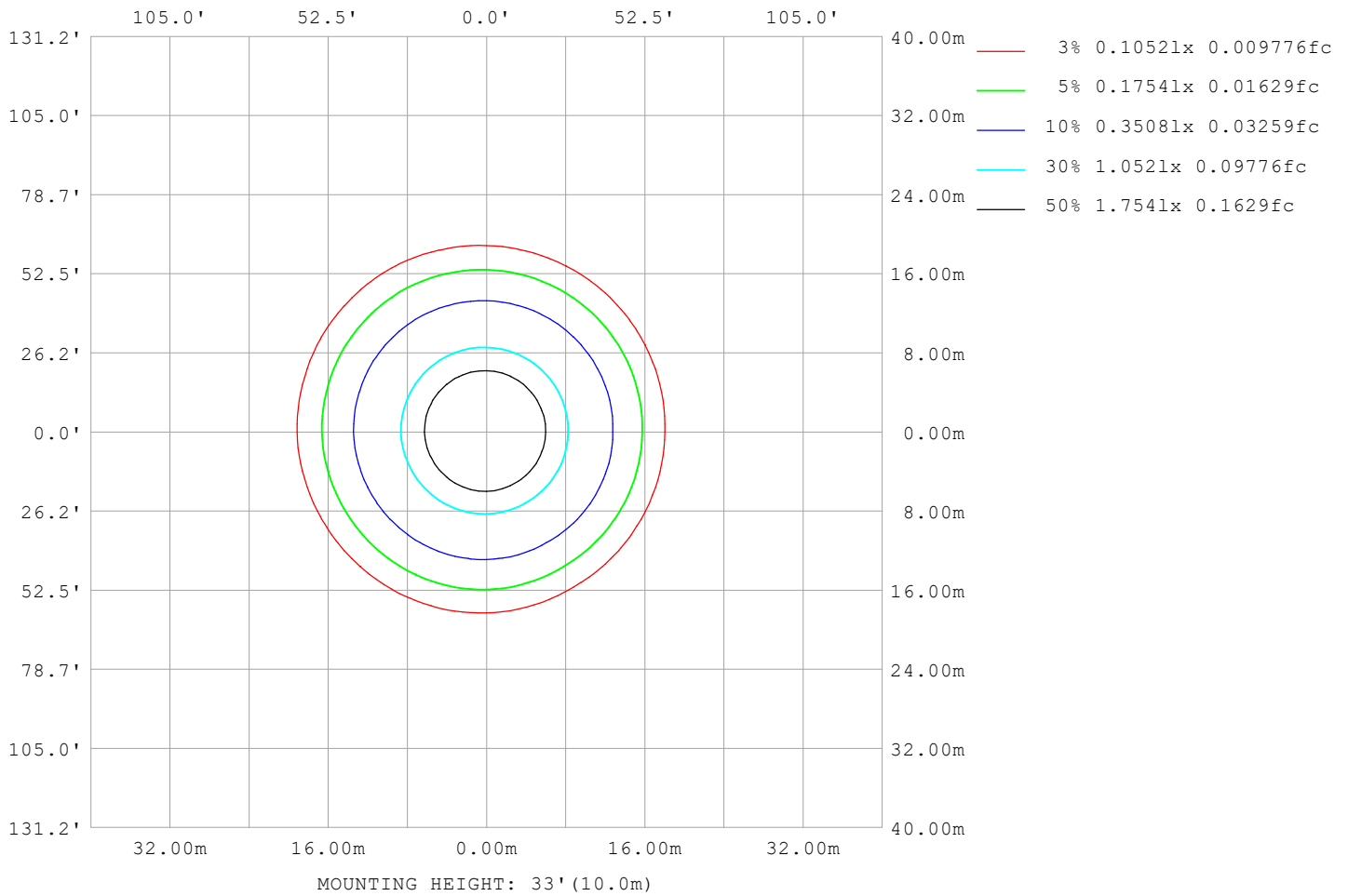
Note:The Curves indicate the illuminated area and the average illumination when the luminaire is at different distance.

C Range: 0 - 360DEG
C Interval: 30.0DEG
Test Speed: HIGH
Temperature:25.3°C
Operators:DAMIN
Test Date:2026-01-30

γ Range: 0 - 90DEG
γ Interval: 5.0DEG
Test System:EVERFINE GO-2000B_V1 SYSTEM V2.00.488
Humidity:65.0%
Test Distance:6.144m [K=1.0000]
Remarks:

ISOLUX DIAGRAM

Test:U:120.96V I:0.0983A P:11.773W PF:0.9904 Freq:60.00Hz Lamp Flux:824.166x1 lm		
NAME: LS-SMC-5-C28-11W-5CCT-BL	TYPE:	WEIGHT:
SPEC.:	DIM.:	SERIAL No.: 1#-27K
MFR.: YOURZOR	SUR.: 0.11	Shielding Angle:



C Range: 0 - 360DEG
 C Interval: 30.0DEG
 Test Speed: HIGH
 Temperature:25.3°C
 Operators:DAMIN
 Test Date:2026-01-30

γ Range: 0 - 90DEG
 γ Interval: 5.0DEG
 Test System:EVERFINE GO-2000B_V1 SYSTEM V2.00.488
 Humidity:65.0%
 Test Distance:6.144m [K=1.0000]
 Remarks:

LED Avg.L Report

Test:U:120.96V I:0.0983A P:11.773W PF:0.9904 Freq:60.00Hz Lamp Flux:824.166x1 lm		
NAME: LS-SMC-5-C28-11W-5CCT-BL	TYPE:	WEIGHT:
SPEC.:	DIM.:	SERIAL No.: 1#-27K
MFR.: YOURZOR	SUR.: 0.11	Shielding Angle:

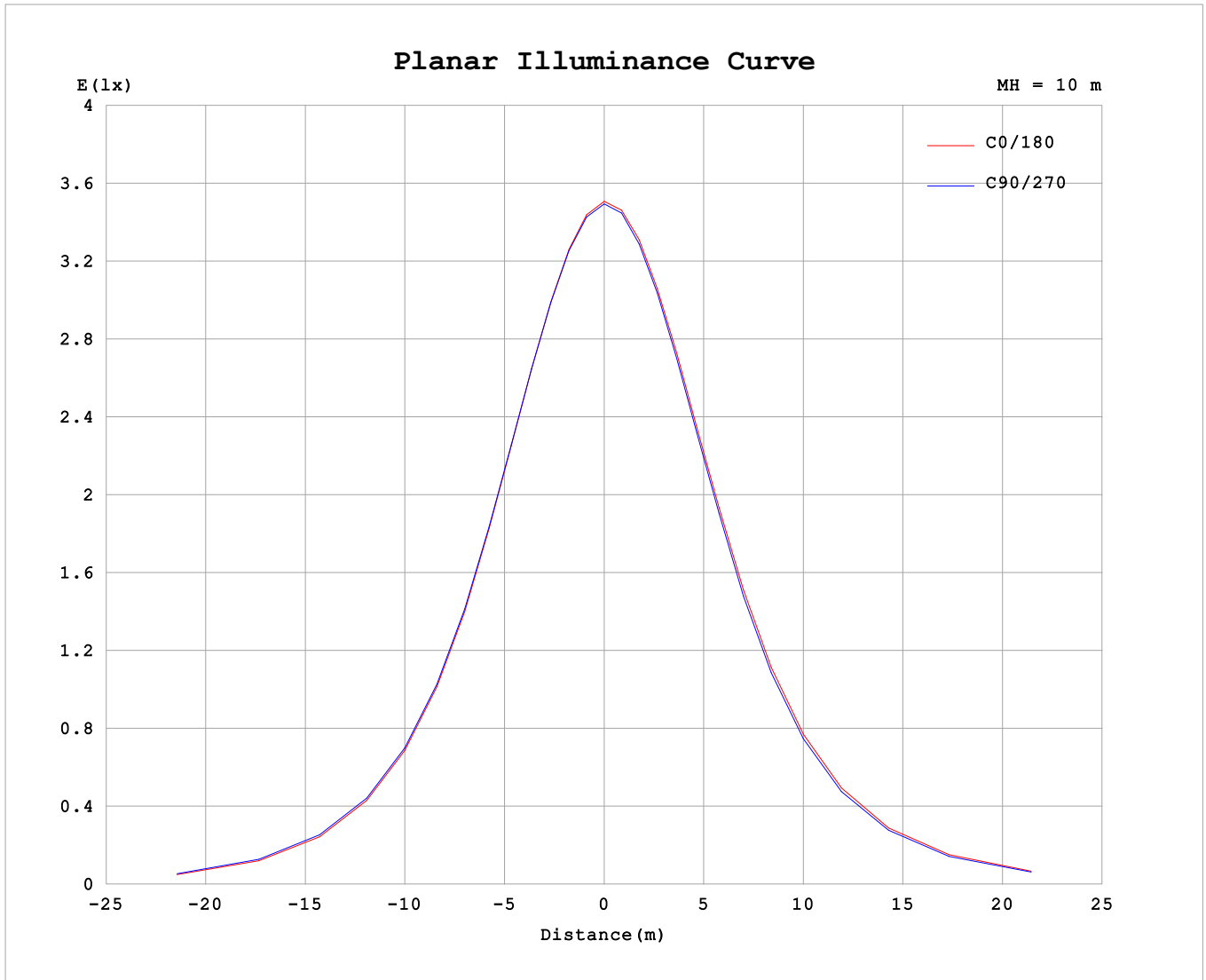
AvgL	cd/m2
L_0~180 (65) av	19540
L_0~180 (75) av	9563
L_0~180 (85) av	404
L_90~270 (65) av	19544
L_90~270 (75) av	9620
L_90~270 (85) av	409
L_45 (65) av	19534
L_45 (75) av	9632
L_45 (85) av	410

Standard: GB/T 29293-2012

C Range: 0 - 360DEG
 C Interval: 30.0DEG
 Test Speed: HIGH
 Temperature:25.3°C
 Operators:DAMIN
 Test Date:2026-01-30

γ Range: 0 - 90DEG
 γ Interval: 5.0DEG
 Test System:EVERFINE GO-2000B_V1 SYSTEM V2.00.488
 Humidity:65.0%
 Test Distance:6.144m [K=1.0000]
 Remarks:

Planar Illuminance Curve



C Range: 0 - 360DEG
 C Interval: 30.0DEG
 Test Speed: HIGH
 Temperature: 25.3°C
 Operators: DAMIN
 Test Date: 2026-01-30

γ Range: 0 - 90DEG
 γ Interval: 5.0DEG
 Test System: EVERFINE GO-2000B_V1 SYSTEM V2.00.488
 Humidity: 65.0%
 Test Distance: 6.144m [K=1.0000]
 Remarks:

