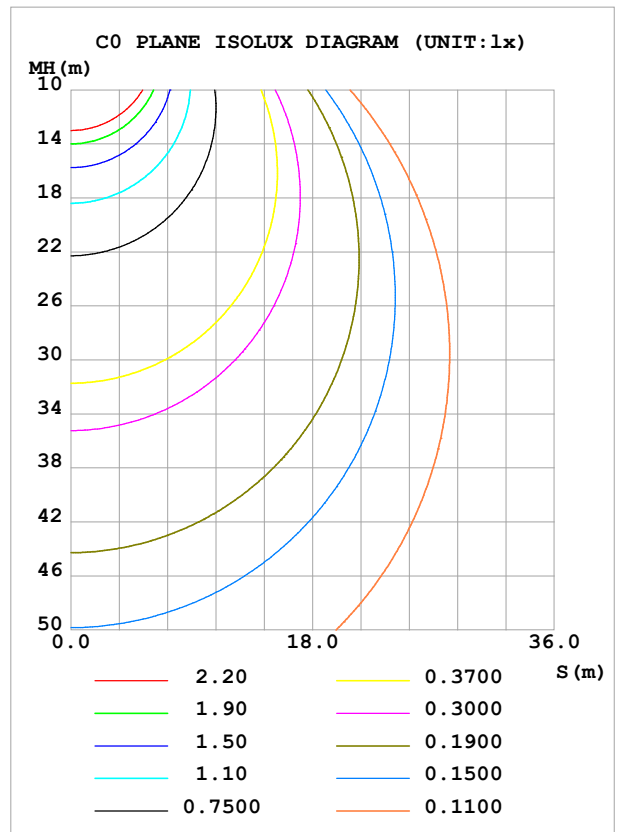
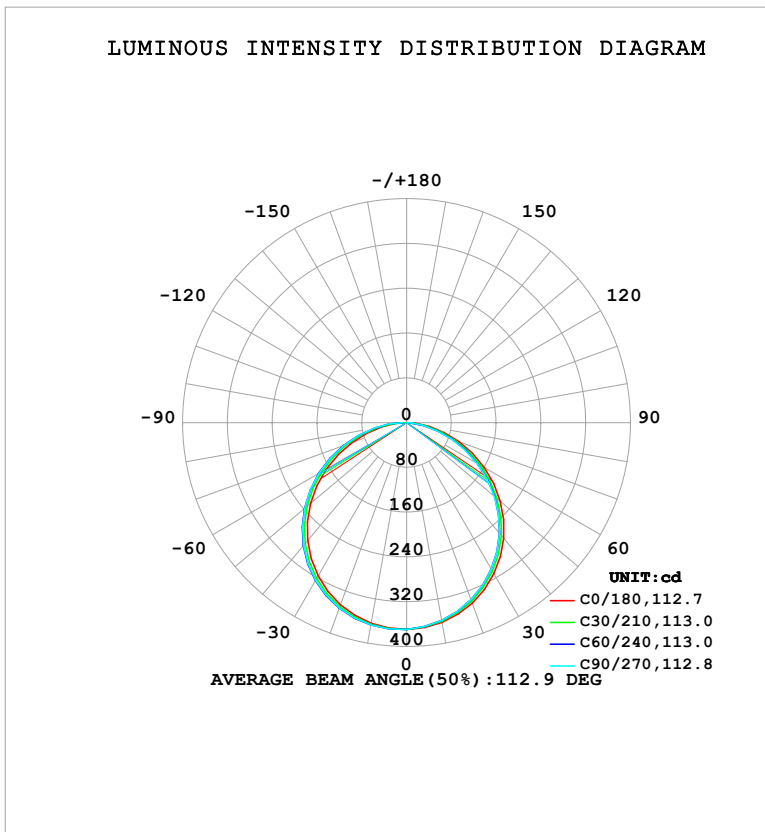


LUMINAIRE PHOTOMETRIC TEST REPORT

Test:U:121.02V I:0.1649A P:18.503W PF:0.9273 Freq:60.00Hz Lamp Flux:1065.68x1 lm		
NAME: LS-SM-9R-18W-5CCT-BL	TYPE:	WEIGHT:
SPEC.:	DIM.:	SERIAL No.: 1#27K
MFR.: EVERFINE	SUR.: 0.199	Shielding Angle:

DATA OF LAMP		PHOTOMETRIC DATA			
MODELS-SM-9R-18W-5CCT-BL-27K		Imax (cd)	369.8	S/MH (C0/180)	1.27
NOMINAL POWER (W)	18	LOR (%)	100.0	S/MH (C90/270)	1.31
RATED VOLTAGE (V)	120	TOTAL FLUX (lm)	1065.7	η UP, DN (C0-180)	0.0,47.3
NOMINAL FLUX (lm)	1065.68	CIE CLASS	DIRECT	η UP, DN (C180-360)	0.0,52.7
LAMPS INSIDE	1	η up (%)	0.0	CIBSE SHR NOM	1.25
TEST VOLTAGE (V)	120	η down (%)	100.0	CIBSE SHR MAX	1.35



C Range: 0 - 360DEG
 C Interval: 30.0DEG
 Test Speed: HIGH
 Temperature:25.3°C
 Operators:DAMIN
 Test Date:2026-02-02

γ Range: 0 - 90DEG
 γ Interval: 5.0DEG
 Test System:EVERFINE GO-2000B_V1 SYSTEM V2.00.488
 Humidity:65.0%
 Test Distance:6.144m [K=1.0000]
 Remarks:

ZONAL FLUX DIAGRAM

ZONAL FLUX DIAGRAM:

γ	C0	C45	C90	C135	C180	C225	C270	C315	γ	Φ zone	Φ total	%lum, lamp
10	362.3	359.7	359.1	361.0	363.9	366.5	367.0	365.2	0- 10	34.95	34.95	3.28,3.28
20	343.0	338.1	336.8	340.4	346.2	351.2	352.3	348.6	10- 20	100.3	135.3	12.7,12.7
30	311.8	304.7	302.6	307.7	316.3	323.7	325.4	320.0	20- 30	152.4	287.7	27,27
40	269.6	260.7	257.9	264.2	275.0	284.5	286.6	280.0	30- 40	184.2	471.9	44.3,44.3
50	218.3	208.1	204.7	211.6	224.1	235.3	237.8	230.2	40- 50	191.1	663.0	62.2,62.2
60	160.3	149.6	145.6	152.3	165.8	178.1	181.0	172.8	50- 60	172.4	835.3	78.4,78.4
70	99.16	89.14	84.76	90.40	103.7	116.6	119.4	111.1	60- 70	131.3	966.6	90.7,90.7
80	41.86	33.37	29.36	33.97	44.99	56.57	58.93	51.38	70- 80	76.39	1043	97.9,97.9
90	0.6794	0.7803	0.8134	0.7291	0.7611	5.243	7.442	3.493	80- 90	22.70	1066	100,100
100									90-100			
110									100-110			
120									110-120			
130									120-130			
140									130-140			
150									140-150			
160									150-160			
170									160-170			
180									170-180			
DEG	LUMINOUS INTENSITY:cd									UNIT:lm		

Conical surface Flux(90deg): 568.18 lm

%lum = 53.3%

%lamp = 53.3%

Conical surface Flux(130deg): 907.24 lm

%lum = 85.1%

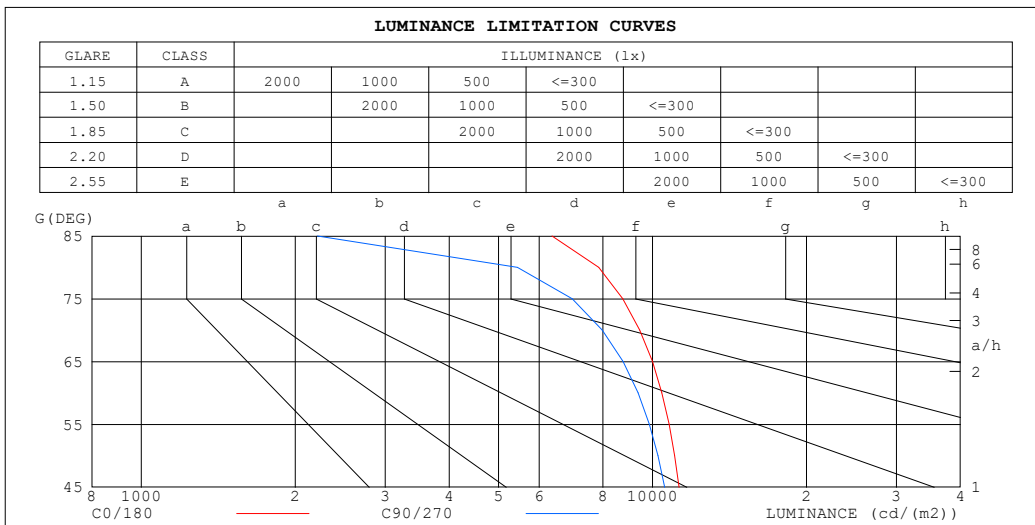
%lamp = 85.1%

C Range: 0 - 360DEG
 C Interval: 30.0DEG
 Test Speed: HIGH
 Temperature:25.3°C
 Operators:DAMIN
 Test Date:2026-02-02

γ Range: 0 - 90DEG
 γ Interval: 5.0DEG
 Test System:EVERFINE GO-2000B_V1 SYSTEM V2.00.488
 Humidity:65.0%
 Test Distance:6.144m [K=1.0000]
 Remarks:

LUMINANCE LIMITATION CURVES

Test:U:121.02V I:0.1649A P:18.503W PF:0.9273 Freq:60.00Hz Lamp Flux:1065.68x1 lm		
NAME: LS-SM-9R-18W-5CCT-BL	TYPE:	WEIGHT:
SPEC.:	DIM.:	SERIAL No.: 1#27K
MFR.: EVERFINE	SUR.: 0.199	Shielding Angle:



LUMINANCE cd/(m2)		
G (DEG)	C0/180	C90/270
85	6360	2208
80	7844	5442
75	8749	6960
70	9434	7976
65	9993	8756
60	10430	9372
55	10771	9860
50	11050	10250
45	11273	10566

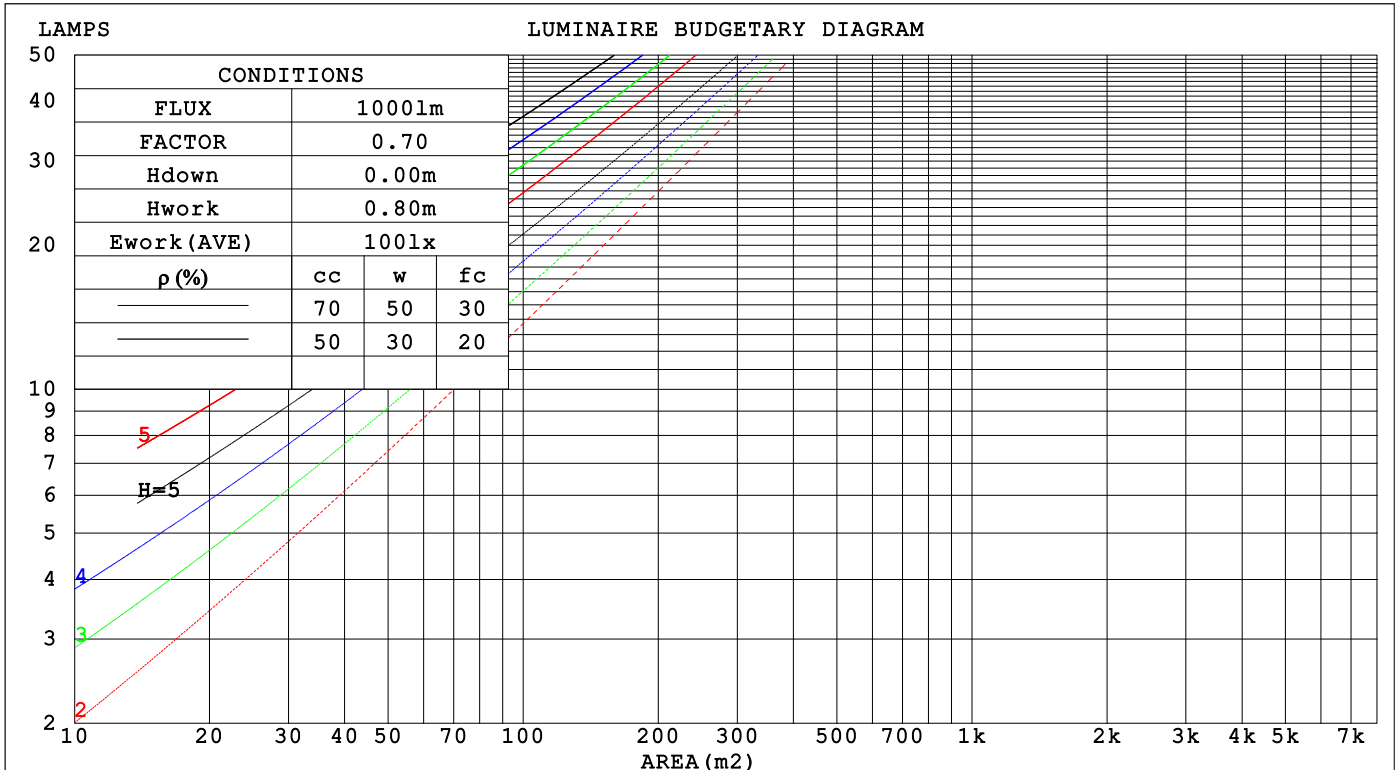
C Range: 0 - 360DEG
 C Interval: 30.0DEG
 Test Speed: HIGH
 Temperature:25.3°C
 Operators:DAMIN
 Test Date:2026-02-02

γ Range: 0 - 90DEG
 γ Interval: 5.0DEG
 Test System:EVERFINE GO-2000B_V1 SYSTEM V2.00.488
 Humidity:65.0%
 Test Distance:6.144m [K=1.0000]
 Remarks:

CU AND LUMINAIRE BUDGETARY ESTIMATE DIAGRAM

Test:U:121.02V I:0.1649A P:18.503W PF:0.9273 Freq:60.00Hz Lamp Flux:1065.68x1 lm		
NAME: LS-SM-9R-18W-5CCT-BL	TYPE:	WEIGHT:
SPEC.:	DIM.:	SERIAL No.: 1#27K
MFR.: EVERFINE	SUR.: 0.199	Shielding Angle:

ρcc	80%			70%			50%			30%			10%			0
ρw	50%	30%	10%	50%	30%	10%	50%	30%	10%	50%	30%	10%	50%	30%	10%	0
ρfc	20%			20%			20%			20%			20%			0
RCR	RCR:Room Cavity Ratio															
	Coefficients of Utilization(CU)															
0.0	1.19	1.19	1.19	1.16	1.16	1.16	1.11	1.11	1.11	1.06	1.06	1.06	1.02	1.02	1.02	1.00
1.0	1.04	.99	.95	1.01	.97	.94	.97	.94	.91	.93	.91	.88	.90	.87	.85	.83
2.0	.90	.83	.77	.88	.82	.77	.85	.79	.75	.81	.77	.73	.78	.75	.71	.69
3.0	.79	.71	.64	.78	.70	.64	.75	.68	.63	.72	.66	.61	.69	.64	.60	.58
4.0	.70	.61	.54	.69	.60	.54	.66	.59	.53	.64	.58	.52	.62	.56	.52	.50
5.0	.63	.53	.47	.61	.53	.46	.59	.52	.46	.57	.51	.45	.55	.50	.45	.43
6.0	.56	.47	.41	.55	.47	.41	.53	.46	.40	.52	.45	.40	.50	.44	.39	.37
7.0	.51	.42	.36	.50	.42	.36	.49	.41	.36	.47	.40	.35	.46	.40	.35	.33
8.0	.46	.38	.32	.46	.38	.32	.44	.37	.32	.43	.36	.32	.42	.36	.31	.29
9.0	.43	.34	.29	.42	.34	.29	.41	.34	.29	.40	.33	.28	.39	.33	.28	.26
10.0	.39	.31	.26	.39	.31	.26	.38	.31	.26	.37	.30	.26	.36	.30	.26	.24



C Range: 0 - 360DEG
 C Interval: 30.0DEG
 Test Speed: HIGH
 Temperature:25.3°C
 Operators:DAMIN
 Test Date:2026-02-02

γ Range: 0 - 90DEG
 γ Interval: 5.0DEG
 Test System:EVERFINE GO-2000B_V1 SYSTEM V2.00.488
 Humidity:65.0%
 Test Distance:6.144m [K=1.0000]
 Remarks:

WEC AND CCEC

Test:U:121.02V I:0.1649A P:18.503W PF:0.9273 Freq:60.00Hz Lamp Flux:1065.68x1 lm		
NAME: LS-SM-9R-18W-5CCT-BL	TYPE:	WEIGHT:
SPEC.:	DIM.:	SERIAL No.: 1#27K
MFR.: EVERFINE	SUR.: 0.199	Shielding Angle:

ρ_{CC}	80%			70%			50%			30%			10%			0
ρ_w	50%	30%	10%	50%	30%	10%	50%	30%	10%	50%	30%	10%	50%	30%	10%	0
ρ_{fc}	20%			20%			20%			20%			20%			0
RCR	RCR:Room Cavity Ratio						Wall Exitance Coefficients(WEC)									
0.0																
1.0	.313	.178	.056	.306	.175	.055	.293	.168	.054	.281	.162	.052	.269	.156	.050	
2.0	.294	.161	.049	.288	.158	.049	.276	.153	.048	.265	.149	.047	.255	.144	.045	
3.0	.271	.144	.043	.266	.142	.043	.256	.139	.042	.246	.135	.041	.237	.131	.041	
4.0	.250	.130	.038	.245	.128	.038	.236	.125	.037	.228	.122	.037	.220	.119	.036	
5.0	.231	.118	.034	.227	.116	.034	.219	.114	.034	.211	.111	.033	.204	.109	.033	
6.0	.214	.107	.031	.210	.106	.031	.203	.104	.030	.196	.102	.030	.190	.100	.030	
7.0	.199	.099	.028	.196	.098	.028	.189	.096	.028	.183	.094	.027	.178	.092	.027	
8.0	.186	.091	.026	.183	.090	.025	.177	.089	.025	.172	.087	.025	.167	.086	.025	
9.0	.174	.084	.024	.172	.084	.023	.166	.082	.023	.162	.081	.023	.157	.080	.023	
10.0	.164	.079	.022	.162	.078	.022	.157	.077	.022	.152	.076	.022	.148	.075	.021	

ρ_{CC}	80%			70%			50%			30%			10%			0
ρ_w	50%	30%	10%	50%	30%	10%	50%	30%	10%	50%	30%	10%	50%	30%	10%	0
ρ_{fc}	20%			20%			20%			20%			20%			0
RCR	RCR:Room Cavity Ratio						Ceiling Cavity Exitance Coefficients(CCEC)									
0.0																
1.0	.190	.190	.190	.163	.163	.163	.111	.111	.111	.064	.064	.064	.020	.020	.020	
2.0	.181	.156	.134	.154	.134	.115	.106	.092	.080	.061	.053	.046	.019	.017	.015	
3.0	.173	.132	.098	.148	.114	.085	.101	.079	.059	.058	.046	.035	.019	.015	.011	
4.0	.165	.114	.074	.141	.099	.064	.097	.069	.045	.056	.040	.027	.018	.013	.009	
5.0	.157	.101	.058	.135	.087	.051	.093	.061	.036	.054	.036	.021	.017	.012	.007	
6.0	.150	.091	.047	.129	.078	.041	.089	.055	.029	.051	.032	.017	.017	.010	.006	
7.0	.142	.082	.039	.122	.071	.034	.084	.050	.024	.049	.029	.014	.016	.010	.005	
8.0	.136	.075	.033	.117	.065	.029	.081	.046	.020	.047	.027	.012	.015	.009	.004	
9.0	.129	.070	.029	.111	.060	.025	.077	.042	.018	.045	.025	.011	.014	.008	.003	
10.0	.123	.065	.025	.106	.056	.022	.073	.039	.016	.043	.023	.009	.014	.008	.003	
10.0	.117	.060	.022	.101	.052	.020	.070	.037	.014	.041	.022	.008	.013	.007	.003	

C Range: 0 - 360DEG
 C Interval: 30.0DEG
 Test Speed: HIGH
 Temperature:25.3°C
 Operators:DAMIN
 Test Date:2026-02-02

γ Range: 0 - 90DEG
 γ Interval: 5.0DEG
 Test System:EVERFINE GO-2000B_V1 SYSTEM V2.00.488
 Humidity:65.0%
 Test Distance:6.144m [K=1.0000]
 Remarks:

UGR(Unified Glare Rating) Table

Test:U:121.02V I:0.1649A P:18.503W PF:0.9273 Freq:60.00Hz										
Lamp Flux:1065.68x1 lm										
NAME: LS-SM-9R-18W-5CCT-BL					TYPE:			WEIGHT:		
SPEC.:					DIM.:			SERIAL No.: 1#27K		
MFR.: EVERFINE					SUR.: 0.199			Shielding Angle:		
ceiling/cavity	0.7	0.7	0.5	0.5	0.3	0.7	0.7	0.5	0.5	0.3
walls	0.5	0.3	0.5	0.3	0.3	0.5	0.3	0.5	0.3	0.3
working plane	0.2	0.2	0.2	0.2	0.2	0.2	0.2	0.2	0.2	0.2
Room dimensions	Viewed crosswise					Viewed endwise				
x = 2H y = 2H	20.7	22.2	21.0	22.4	22.6	20.3	21.8	20.5	22.0	22.2
3H	22.2	23.6	22.5	23.8	24.0	21.6	23.0	21.9	23.2	23.5
4H	22.7	24.1	23.1	24.3	24.6	22.0	23.4	22.4	23.6	23.9
6H	23.1	24.4	23.5	24.7	25.0	22.3	23.6	22.6	23.8	24.1
8H	23.2	24.4	23.6	24.7	25.0	22.3	23.5	22.6	23.8	24.1
12H	23.3	24.4	23.6	24.7	25.0	22.2	23.4	22.6	23.7	24.0
4H 2H	21.2	22.5	21.5	22.8	23.0	20.9	22.2	21.2	22.5	22.7
3H	22.8	24.0	23.2	24.3	24.6	22.3	23.5	22.7	23.8	24.1
4H	23.5	24.6	23.9	24.9	25.3	22.9	24.0	23.3	24.3	24.6
6H	24.0	25.0	24.4	25.4	25.7	23.2	24.2	23.6	24.5	24.9
8H	24.2	25.0	24.6	25.4	25.8	23.2	24.1	23.6	24.5	24.9
12H	24.2	25.1	24.7	25.4	25.8	23.2	24.0	23.6	24.4	24.8
8H 4H	23.7	24.6	24.1	25.0	25.4	23.2	24.0	23.6	24.4	24.8
6H	24.3	25.0	24.7	25.5	25.9	23.5	24.3	24.0	24.7	25.1
8H	24.5	25.1	24.9	25.5	26.0	23.5	24.2	24.0	24.6	25.1
12H	24.6	25.2	25.1	25.6	26.1	23.5	24.1	24.0	24.6	25.0
12H 4H	23.7	24.5	24.1	24.9	25.3	23.1	24.0	23.6	24.4	24.8
6H	24.3	25.0	24.8	25.4	25.8	23.6	24.2	24.0	24.6	25.1
8H	24.5	25.0	24.9	25.5	26.0	23.6	24.1	24.0	24.6	25.1
Variations with the observer position at spacings(CIE Pub.117):										
S = 1.0H	+ 0.1 / - 0.2					+ 0.2 / - 0.2				
1.5H	+ 0.1 / - 0.3					+ 0.2 / - 0.3				
2.0H	+ 0.3 / - 0.3					+ 0.3 / - 0.4				

CIE Pub.117, 1066 lm Total Lamp Luminous Flux Correct (8log(F/F0) = 0.2)
 Area: 0.031 m2

C Range: 0 - 360DEG
 C Interval: 30.0DEG
 Test Speed: HIGH
 Temperature:25.3°C
 Operators:DAMIN
 Test Date:2026-02-02

γ Range: 0 - 90DEG
 γ Interval: 5.0DEG
 Test System:EVERFINE GO-2000B_V1 SYSTEM V2.00.488
 Humidity:65.0%
 Test Distance:6.144m [K=1.0000]
 Remarks:

UTILIZATION FACTORS TABLE

Test:U:121.02V I:0.1649A P:18.503W PF:0.9273 Freq:60.00Hz Lamp Flux:1065.68x1 lm		
NAME: LS-SM-9R-18W-5CCT-BL	TYPE:	WEIGHT:
SPEC.:	DIM.:	SERIAL No.: 1#27K
MFR.: EVERFINE	SUR.: 0.199	Shielding Angle:

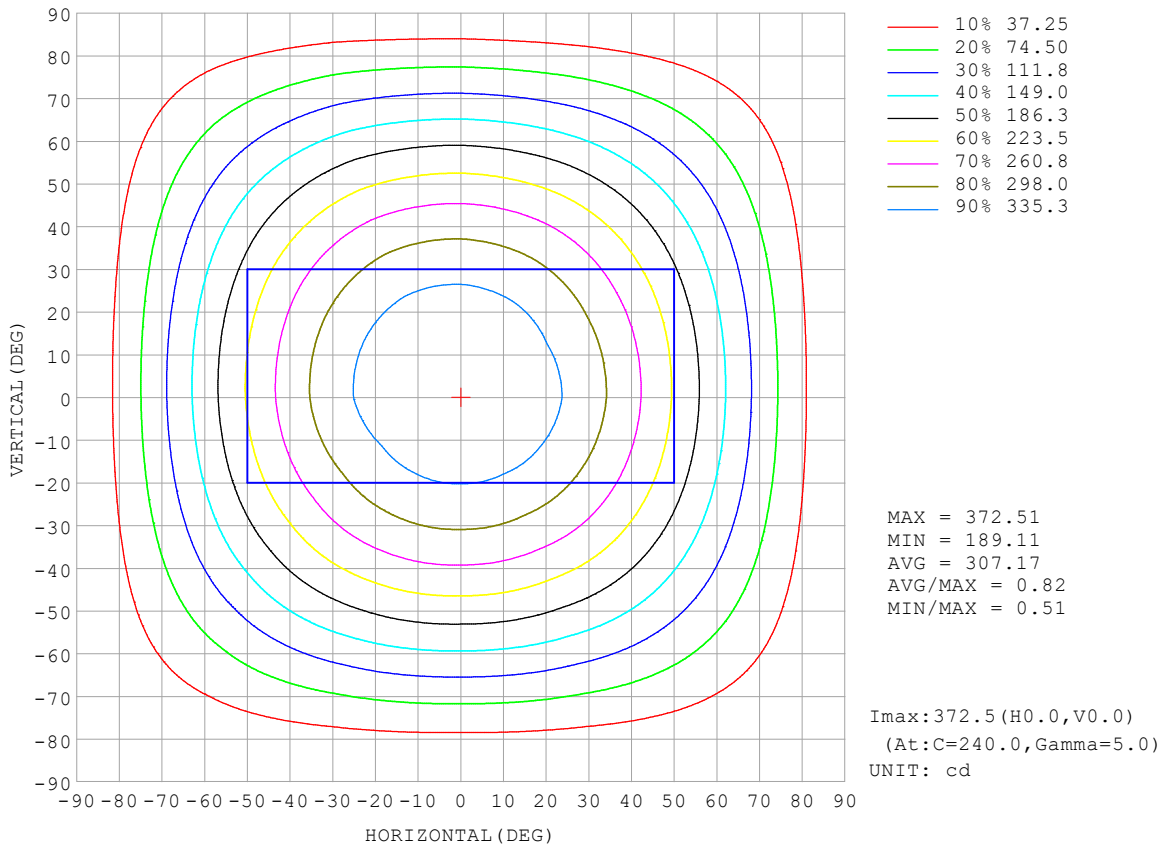
REFLECTANCE										
Ceiling	0.8	0.8	0.8	0.7	0.7	0.7	0.5	0.5	0.5	0
Walls	0.7	0.5	0.3	0.7	0.5	0.3	0.7	0.5	0.3	0
Working plane	0.2	0.2	0.2	0.2	0.2	0.2	0.2	0.2	0.2	0
ROOM INDEX	UTILIZATION FACTORS (PERCENT) $k(RI) \times RCR = 5$									
k = 0.60	57	46	39	57	45	39	55	45	38	32
0.80	67	56	48	66	55	48	65	54	48	41
1.00	76	65	57	75	64	57	72	65	56	49
1.25	83	72	65	81	72	65	79	70	64	57
1.50	88	78	71	86	77	70	83	75	69	62
2.00	95	86	80	93	85	79	89	83	77	69
2.50	99	91	85	97	89	84	93	87	82	74
3.00	102	95	90	100	94	88	96	91	86	78
4.00	106	100	96	104	99	94	99	95	92	83
5.00	109	104	100	106	102	98	102	98	95	86
ROOM INDEX	UF(total)									Direct
According to DIN EN 13032-2 2004			Suspended				SHRNOM = 1.25			

C Range: 0 - 360DEG
 C Interval: 30.0DEG
 Test Speed: HIGH
 Temperature:25.3°C
 Operators:DAMIN
 Test Date:2026-02-02

γ Range: 0 - 90DEG
 γ Interval: 5.0DEG
 Test System:EVERFINE GO-2000B_V1 SYSTEM V2.00.488
 Humidity:65.0%
 Test Distance:6.144m [K=1.0000]
 Remarks:

ISOCANDELA DIAGRAM

Test:U:121.02V I:0.1649A P:18.503W PF:0.9273 Freq:60.00Hz Lamp Flux:1065.68x1 lm		
NAME: LS-SM-9R-18W-5CCT-BL	TYPE:	WEIGHT:
SPEC.:	DIM.:	SERIAL No.: 1#27K
MFR.: EVERFINE	SUR.: 0.199	Shielding Angle:

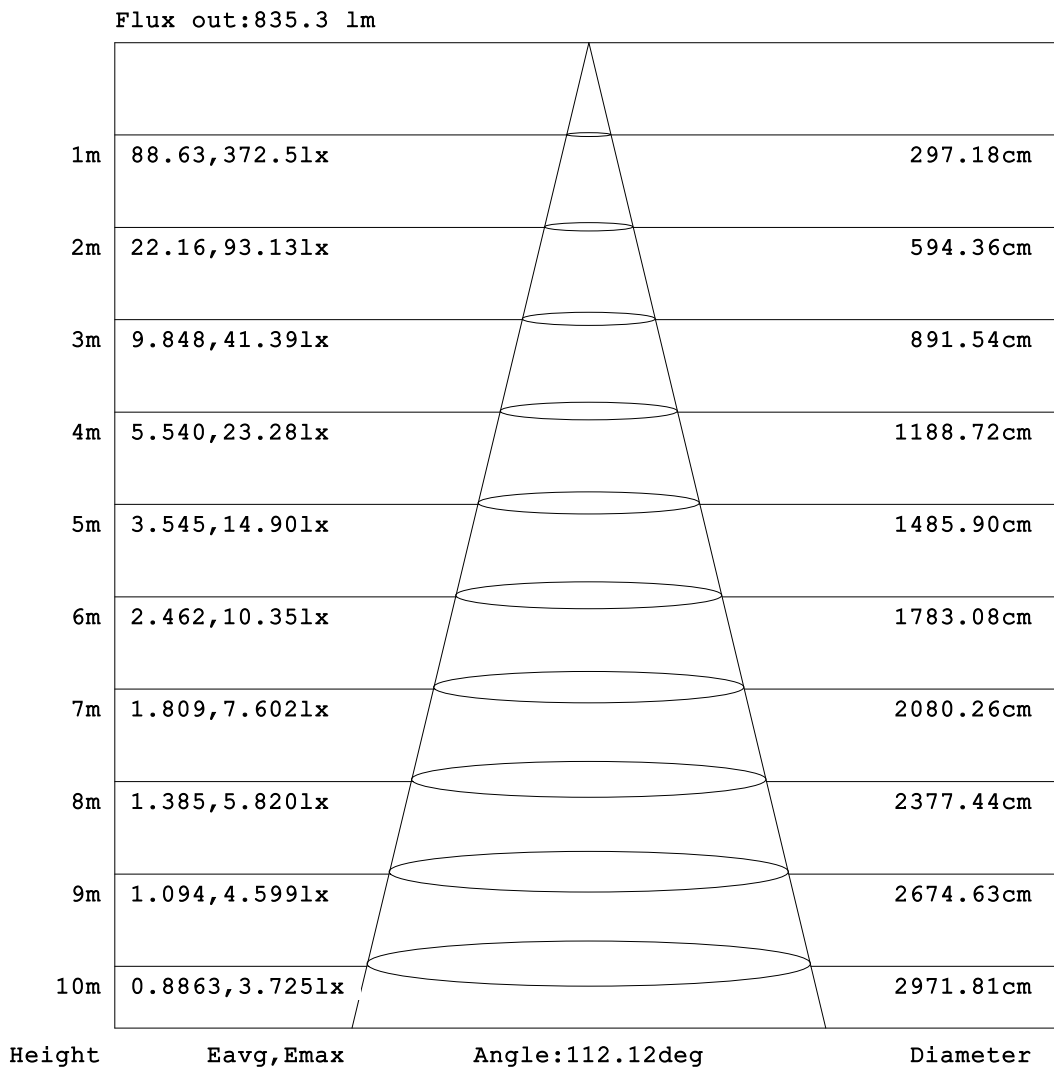


C Range: 0 - 360DEG
 C Interval: 30.0DEG
 Test Speed: HIGH
 Temperature: 25.3°C
 Operators: DAMIN
 Test Date: 2026-02-02

γ Range: 0 - 90DEG
 γ Interval: 5.0DEG
 Test System: EVERFINE GO-2000B_V1 SYSTEM V2.00.488
 Humidity: 65.0%
 Test Distance: 6.144m [K=1.0000]
 Remarks:

AAI Figure

Test:U:121.02V I:0.1649A P:18.503W PF:0.9273 Freq:60.00Hz Lamp Flux:1065.68x1 lm		
NAME: LS-SM-9R-18W-5CCT-BL	TYPE:	WEIGHT:
SPEC.:	DIM.:	SERIAL No.: 1#27K
MFR.: EVERFINE	SUR.: 0.199	Shielding Angle:



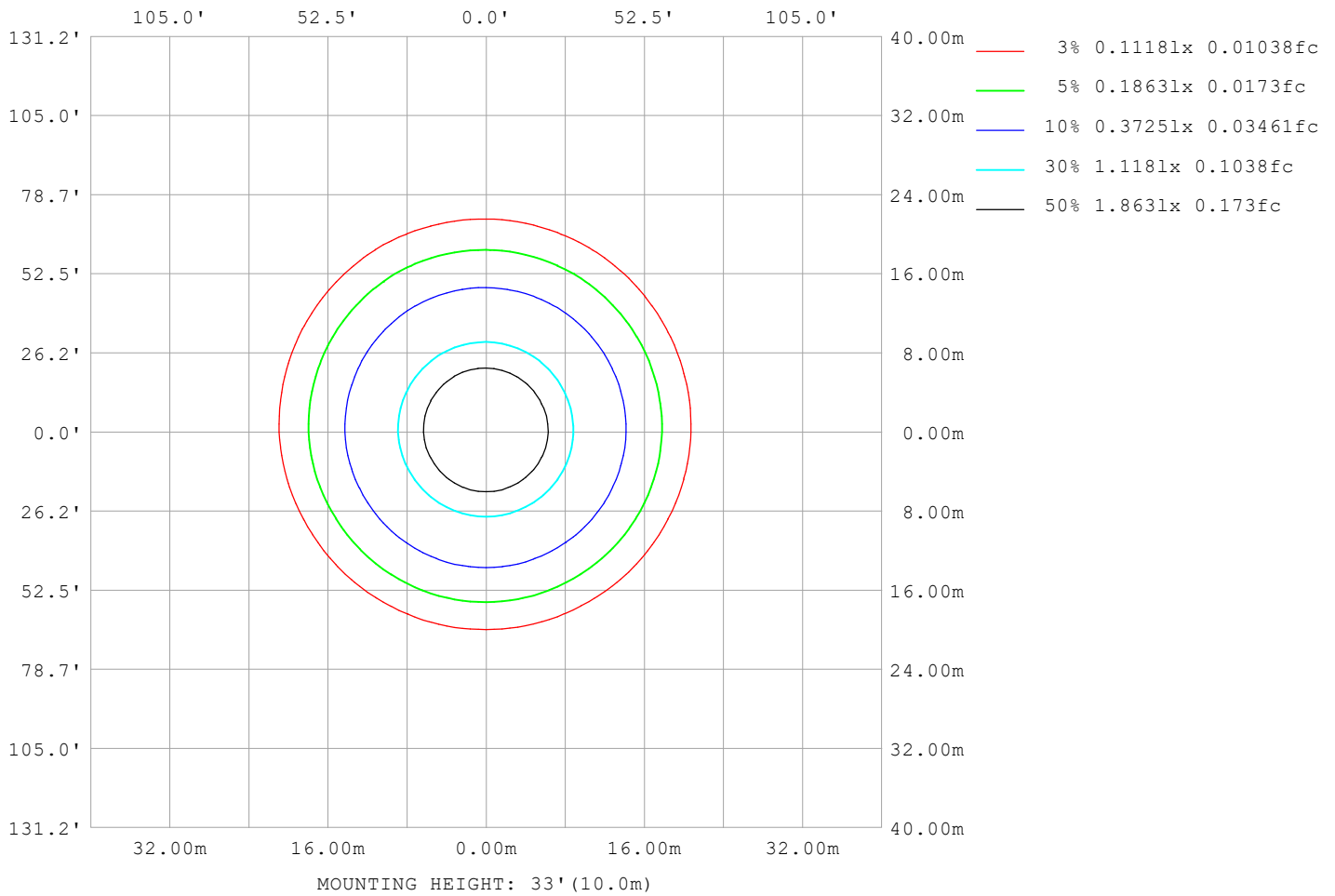
Note:The Curves indicate the illuminated area and the average illumination when the luminaire is at different distance.

C Range: 0 - 360DEG
C Interval: 30.0DEG
Test Speed: HIGH
Temperature:25.3°C
Operators:DAMIN
Test Date:2026-02-02

γ Range: 0 - 90DEG
γ Interval: 5.0DEG
Test System:EVERFINE GO-2000B_V1 SYSTEM V2.00.488
Humidity:65.0%
Test Distance:6.144m [K=1.0000]
Remarks:

ISOLUX DIAGRAM

Test:U:121.02V I:0.1649A P:18.503W PF:0.9273 Freq:60.00Hz Lamp Flux:1065.68x1 lm		
NAME: LS-SM-9R-18W-5CCT-BL	TYPE:	WEIGHT:
SPEC.:	DIM.:	SERIAL No.: 1#27K
MFR.: EVERFINE	SUR.: 0.199	Shielding Angle:



C Range: 0 - 360DEG
 C Interval: 30.0DEG
 Test Speed: HIGH
 Temperature:25.3°C
 Operators:DAMIN
 Test Date:2026-02-02

γ Range: 0 - 90DEG
 γ Interval: 5.0DEG
 Test System:EVERFINE GO-2000B_V1 SYSTEM V2.00.488
 Humidity:65.0%
 Test Distance:6.144m [K=1.0000]
 Remarks:

LED Avg.L Report

Test:U:121.02V I:0.1649A P:18.503W PF:0.9273 Freq:60.00Hz Lamp Flux:1065.68x1 lm		
NAME: LS-SM-9R-18W-5CCT-BL	TYPE:	WEIGHT:
SPEC.:	DIM.:	SERIAL No.: 1#27K
MFR.: EVERFINE	SUR.: 0.199	Shielding Angle:

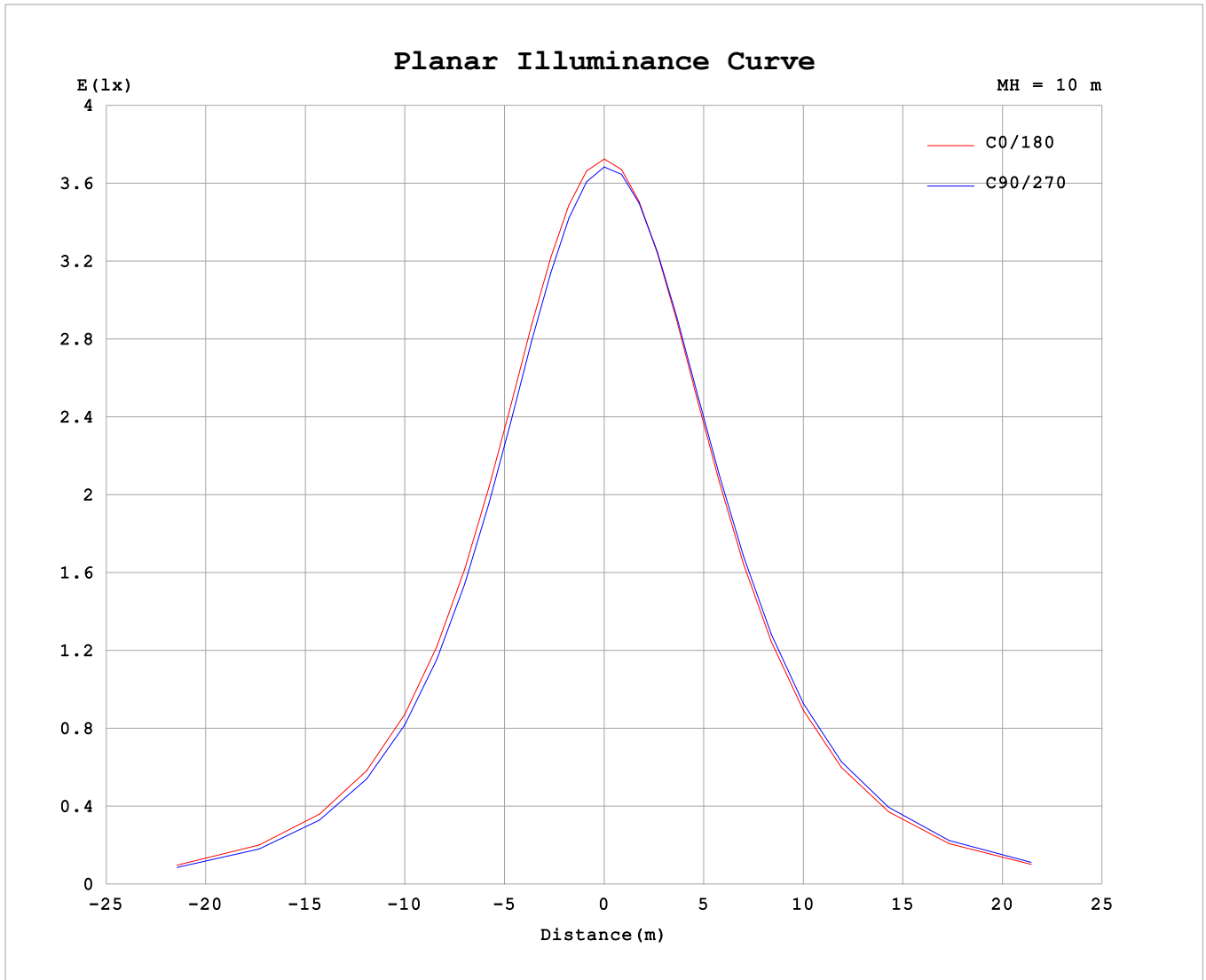
AvgL	cd/m2
L_0~180 (65) av	10101
L_0~180 (75) av	8910
L_0~180 (85) av	6732
L_90~270 (65) av	10128
L_90~270 (75) av	9025
L_90~270 (85) av	6968
L_45 (65) av	10123
L_45 (75) av	8966
L_45 (85) av	6860

Standard: GB/T 29293-2012

C Range: 0 - 360DEG
 C Interval: 30.0DEG
 Test Speed: HIGH
 Temperature:25.3°C
 Operators:DAMIN
 Test Date:2026-02-02

γ Range: 0 - 90DEG
 γ Interval: 5.0DEG
 Test System:EVERFINE GO-2000B_V1 SYSTEM V2.00.488
 Humidity:65.0%
 Test Distance:6.144m [K=1.0000]
 Remarks:

Planar Illuminance Curve



C Range: 0 - 360DEG
 C Interval: 30.0DEG
 Test Speed: HIGH
 Temperature: 25.3°C
 Operators: DAMIN
 Test Date: 2026-02-02

γ Range: 0 - 90DEG
 γ Interval: 5.0DEG
 Test System: EVERFINE GO-2000B_V1 SYSTEM V2.00.488
 Humidity: 65.0%
 Test Distance: 6.144m [K=1.0000]
 Remarks:

