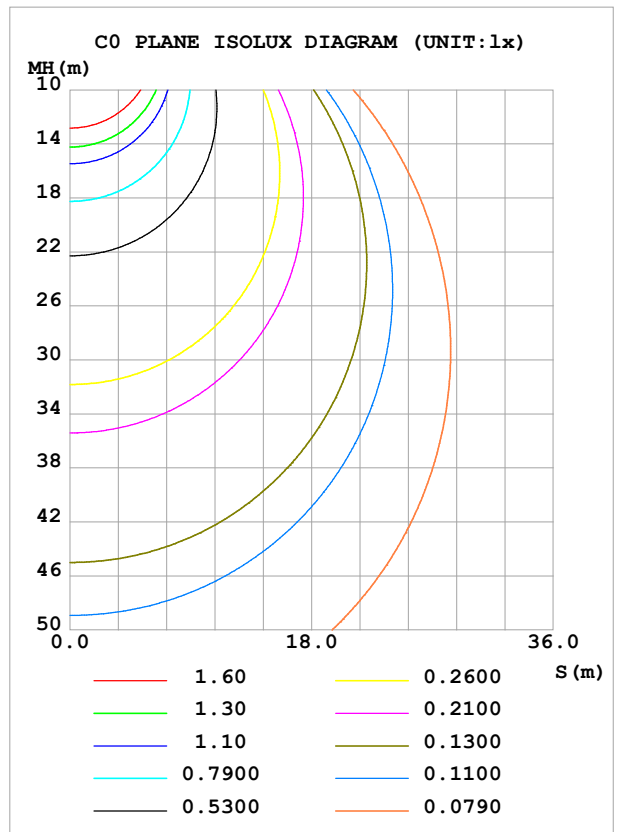
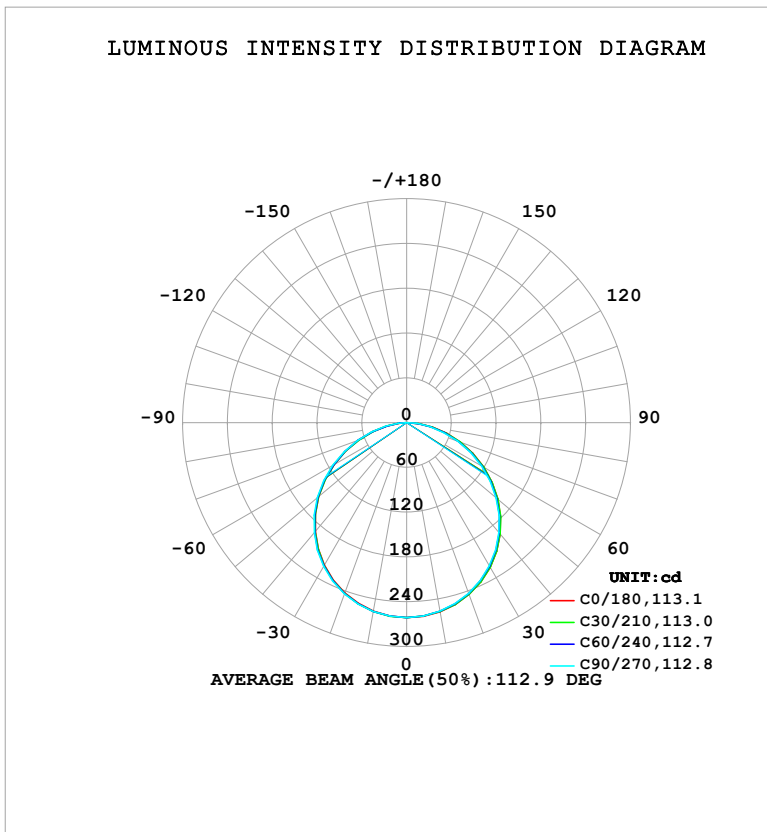


LUMINAIRE PHOTOMETRIC TEST REPORT

| | | |
|---|-------------|-------------------|
| Test:U:120.12V I:0.1080A P:12.017W PF:0.9258 Freq:60.00Hz Lamp Flux:754.194x1 lm | | |
| NAME: LS-SM-7R-12W-5CCT-WH | TYPE: | WEIGHT: |
| SPEC.: | DIM.: | SERIAL No.: 1#27K |
| MFR.: EVERFINE | SUR.: 0.154 | Shielding Angle: |

| DATA OF LAMP | | PHOTOMETRIC DATA | | | | Eff: 62.76 lm/W |
|------------------------------|---------|------------------|--------|--------------------------|--|-----------------|
| MODELS-SM-7R-12W-5CCT-WH-27K | | Imax (cd) | 261.2 | S/MH (C0/180) | | 1.26 |
| NOMINAL POWER (W) | 12 | LOR (%) | 100.0 | S/MH (C90/270) | | 1.27 |
| RATED VOLTAGE (V) | 120 | TOTAL FLUX (lm) | 754.19 | η UP, DN (C0-180) | | 0.0,50.2 |
| NOMINAL FLUX (lm) | 754.194 | CIE CLASS | DIRECT | η UP, DN (C180-360) | | 0.0,49.8 |
| LAMPS INSIDE | 1 | η up (%) | 0.0 | CIBSE SHR NOM | | 1.25 |
| TEST VOLTAGE (V) | 120 | η down (%) | 100.0 | CIBSE SHR MAX | | 1.35 |



C Range: 0 - 360DEG
 C Interval: 30.0DEG
 Test Speed: HIGH
 Temperature: 25.3°C
 Operators: DAMIN
 Test Date: 2026-02-01

γ Range: 0 - 90DEG
 γ Interval: 5.0DEG
 Test System: EVERFINE GO-2000B_V1 SYSTEM V2.00.488
 Humidity: 65.0%
 Test Distance: 6.144m [K=1.0000]
 Remarks:

ZONAL FLUX DIAGRAM

ZONAL FLUX DIAGRAM:

| γ | C0 | C45 | C90 | C135 | C180 | C225 | C270 | C315 | γ | Φ zone | Φ total | %lum, lamp |
|----------|-----------------------|--------|--------|--------|--------|--------|--------|--------|----------|-------------|--------------|------------|
| 10 | 257.3 | 256.9 | 256.6 | 256.3 | 256.4 | 256.9 | 257.0 | 257.5 | 0- 10 | 24.73 | 24.73 | 3.28,3.28 |
| 20 | 244.8 | 244.2 | 243.3 | 242.7 | 242.9 | 243.6 | 244.1 | 245.0 | 10- 20 | 70.97 | 95.69 | 12.7,12.7 |
| 30 | 223.9 | 223.0 | 221.6 | 220.5 | 220.6 | 221.5 | 222.4 | 224.0 | 20- 30 | 107.9 | 203.6 | 27,27 |
| 40 | 195.1 | 194.1 | 192.2 | 190.6 | 190.6 | 191.3 | 192.6 | 195.1 | 30- 40 | 130.3 | 333.9 | 44.3,44.3 |
| 50 | 159.8 | 158.7 | 156.6 | 154.3 | 154.1 | 154.6 | 156.2 | 159.5 | 40- 50 | 135.3 | 469.2 | 62.2,62.2 |
| 60 | 119.6 | 118.3 | 115.9 | 113.1 | 112.3 | 112.6 | 114.7 | 118.7 | 50- 60 | 122.1 | 591.3 | 78.4,78.4 |
| 70 | 76.76 | 75.16 | 72.57 | 69.90 | 68.82 | 68.37 | 70.58 | 75.42 | 60- 70 | 93.05 | 684.4 | 90.7,90.7 |
| 80 | 35.46 | 34.01 | 31.65 | 29.22 | 27.87 | 27.02 | 29.07 | 33.91 | 70- 80 | 54.14 | 738.5 | 97.9,97.9 |
| 90 | 0.6239 | 0.7250 | 0.4717 | 0.4847 | 0.5484 | 0.5420 | 0.5112 | 0.7086 | 80- 90 | 15.66 | 754.2 | 100,100 |
| 100 | | | | | | | | | 90-100 | | | |
| 110 | | | | | | | | | 100-110 | | | |
| 120 | | | | | | | | | 110-120 | | | |
| 130 | | | | | | | | | 120-130 | | | |
| 140 | | | | | | | | | 130-140 | | | |
| 150 | | | | | | | | | 140-150 | | | |
| 160 | | | | | | | | | 150-160 | | | |
| 170 | | | | | | | | | 160-170 | | | |
| 180 | | | | | | | | | 170-180 | | | |
| DEG | LUMINOUS INTENSITY:cd | | | | | | | | | UNIT:lm | | |

Conical surface Flux(90deg): 402.07 lm

%lum = 53.3%

%lamp = 53.3%

Conical surface Flux(130deg): 642.31 lm

%lum = 85.2%

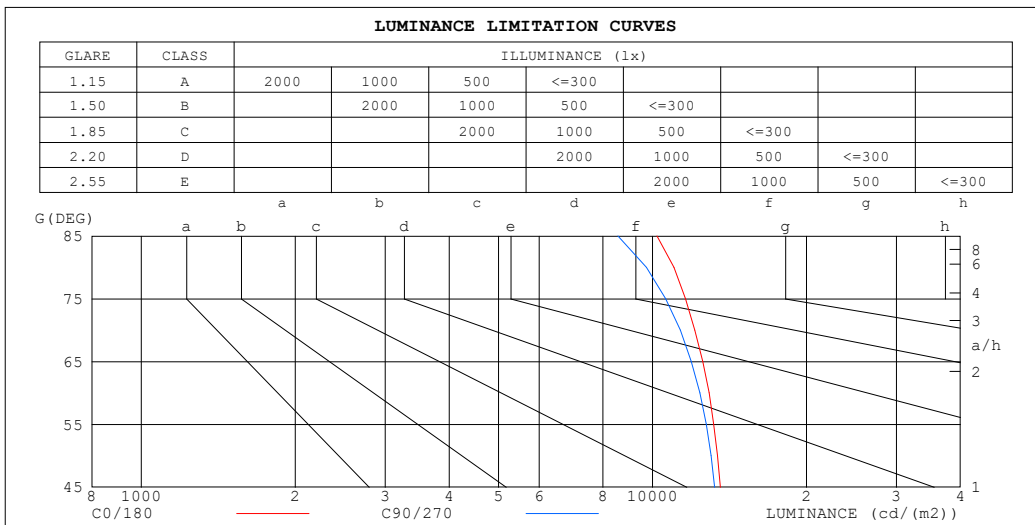
%lamp = 85.2%

C Range: 0 - 360DEG
 C Interval: 30.0DEG
 Test Speed: HIGH
 Temperature:25.3°C
 Operators:DAMIN
 Test Date:2026-02-01

γ Range: 0 - 90DEG
 γ Interval: 5.0DEG
 Test System:EVERFINE GO-2000B_V1 SYSTEM V2.00.488
 Humidity:65.0%
 Test Distance:6.144m [K=1.0000]
 Remarks:

LUMINANCE LIMITATION CURVES

| | | |
|---|-------------|-------------------|
| Test:U:120.12V I:0.1080A P:12.017W PF:0.9258 Freq:60.00Hz Lamp Flux:754.194x1 lm | | |
| NAME: LS-SM-7R-12W-5CCT-WH | TYPE: | WEIGHT: |
| SPEC.: | DIM.: | SERIAL No.: 1#27K |
| MFR.: EVERFINE | SUR.: 0.154 | Shielding Angle: |



| LUMINANCE cd/(m2) | | |
|-------------------|--------|---------|
| G (DEG) | C0/180 | C90/270 |
| 85 | 10208 | 8561 |
| 80 | 11008 | 9732 |
| 75 | 11593 | 10606 |
| 70 | 12097 | 11330 |
| 65 | 12539 | 11910 |
| 60 | 12899 | 12375 |
| 55 | 13170 | 12731 |
| 50 | 13399 | 13009 |
| 45 | 13582 | 13232 |

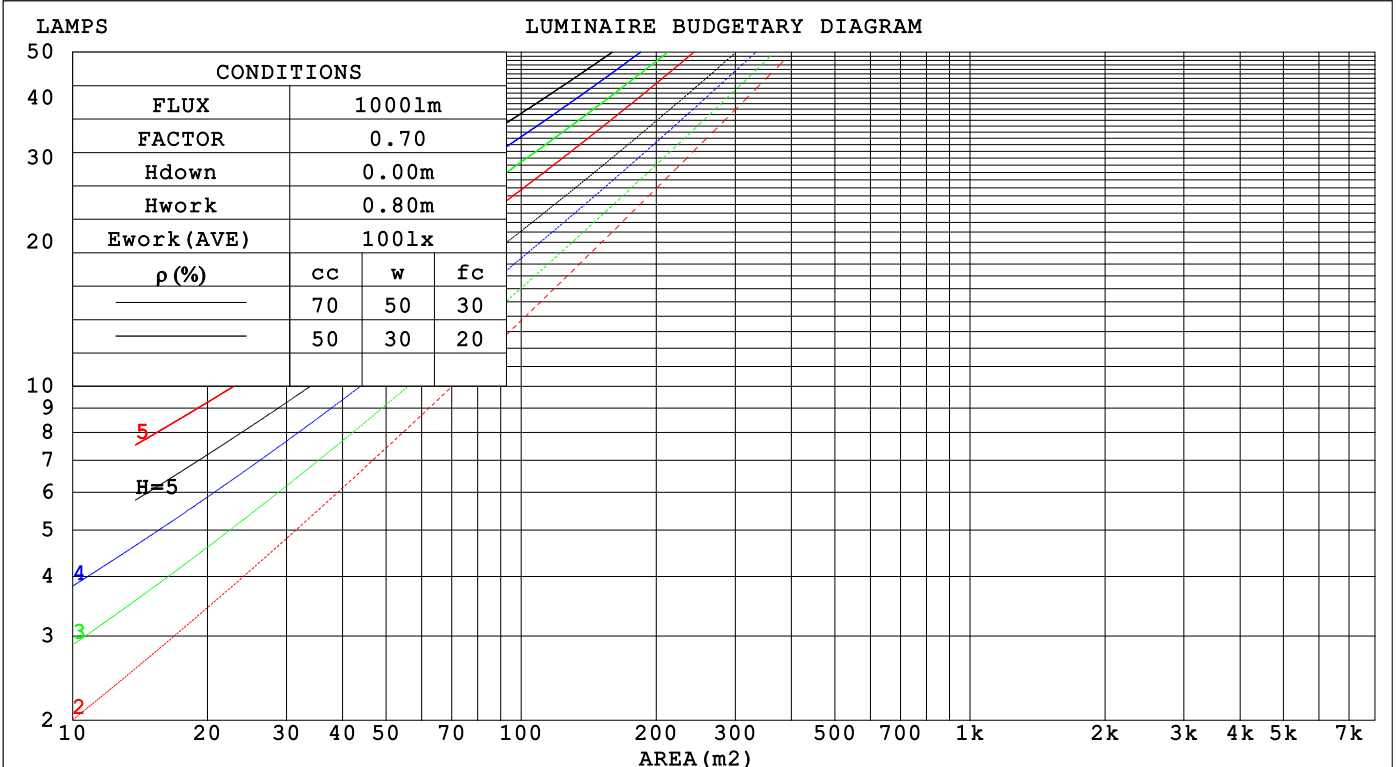
C Range: 0 - 360DEG
 C Interval: 30.0DEG
 Test Speed: HIGH
 Temperature:25.3°C
 Operators:DAMIN
 Test Date:2026-02-01

γ Range: 0 - 90DEG
 γ Interval: 5.0DEG
 Test System:EVERFINE GO-2000B_V1 SYSTEM V2.00.488
 Humidity:65.0%
 Test Distance:6.144m [K=1.0000]
 Remarks:

CU AND LUMINAIRE BUDGETARY ESTIMATE DIAGRAM

| | | |
|---|-------------|-------------------|
| Test:U:120.12V I:0.1080A P:12.017W PF:0.9258 Freq:60.00Hz Lamp Flux:754.194x1 lm | | |
| NAME: LS-SM-7R-12W-5CCT-WH | TYPE: | WEIGHT: |
| SPEC.: | DIM.: | SERIAL No.: 1#27K |
| MFR.: EVERFINE | SUR.: 0.154 | Shielding Angle: |

| ρcc | 80% | | | 70% | | | 50% | | | 30% | | | 10% | | | 0 |
|------|---------------------------------|------|------|------|------|------|------|------|------|------|------|------|------|------|------|------|
| ρw | 50% | 30% | 10% | 50% | 30% | 10% | 50% | 30% | 10% | 50% | 30% | 10% | 50% | 30% | 10% | 0 |
| ρfc | 20% | | | 20% | | | 20% | | | 20% | | | 20% | | | 0 |
| RCR | RCR:Room Cavity Ratio | | | | | | | | | | | | | | | |
| | Coefficients of Utilization(CU) | | | | | | | | | | | | | | | |
| 0.0 | 1.19 | 1.19 | 1.19 | 1.16 | 1.16 | 1.16 | 1.11 | 1.11 | 1.11 | 1.06 | 1.06 | 1.06 | 1.02 | 1.02 | 1.02 | 1.00 |
| 1.0 | 1.04 | .99 | .95 | 1.01 | .97 | .94 | .97 | .94 | .91 | .93 | .91 | .88 | .90 | .87 | .85 | .83 |
| 2.0 | .90 | .83 | .78 | .88 | .82 | .77 | .85 | .79 | .75 | .81 | .77 | .73 | .78 | .75 | .71 | .69 |
| 3.0 | .79 | .71 | .64 | .78 | .70 | .64 | .75 | .68 | .63 | .72 | .66 | .61 | .69 | .64 | .60 | .58 |
| 4.0 | .70 | .61 | .54 | .69 | .60 | .54 | .66 | .59 | .53 | .64 | .58 | .52 | .62 | .56 | .52 | .50 |
| 5.0 | .63 | .53 | .47 | .61 | .53 | .46 | .59 | .52 | .46 | .57 | .51 | .45 | .55 | .50 | .45 | .43 |
| 6.0 | .56 | .47 | .41 | .55 | .47 | .41 | .53 | .46 | .40 | .52 | .45 | .40 | .50 | .44 | .39 | .37 |
| 7.0 | .51 | .42 | .36 | .50 | .42 | .36 | .49 | .41 | .36 | .47 | .40 | .35 | .46 | .40 | .35 | .33 |
| 8.0 | .46 | .38 | .32 | .46 | .38 | .32 | .44 | .37 | .32 | .43 | .36 | .32 | .42 | .36 | .31 | .29 |
| 9.0 | .43 | .34 | .29 | .42 | .34 | .29 | .41 | .34 | .29 | .40 | .33 | .28 | .39 | .33 | .28 | .26 |
| 10.0 | .39 | .31 | .26 | .39 | .31 | .26 | .38 | .31 | .26 | .37 | .30 | .26 | .36 | .30 | .26 | .24 |



C Range: 0 - 360DEG
 C Interval: 30.0DEG
 Test Speed: HIGH
 Temperature:25.3°C
 Operators:DAMIN
 Test Date:2026-02-01

γ Range: 0 - 90DEG
 γ Interval: 5.0DEG
 Test System:EVERFINE GO-2000B_V1 SYSTEM V2.00.488
 Humidity:65.0%
 Test Distance:6.144m [K=1.0000]
 Remarks:

WEC AND CCEC

| | | | | | | | | |
|---|--|--|-------------|--|--|-------------------|--|--|
| Test:U:120.12V I:0.1080A P:12.017W PF:0.9258 Freq:60.00Hz | | | | | | | | |
| Lamp Flux:754.194x1 lm | | | | | | | | |
| NAME: LS-SM-7R-12W-5CCT-WH | | | TYPE: | | | WEIGHT: | | |
| SPEC.: | | | DIM.: | | | SERIAL No.: 1#27K | | |
| MFR.: EVERFINE | | | SUR.: 0.154 | | | Shielding Angle: | | |

| ρ_{CC} | 80% | | | 70% | | | 50% | | | 30% | | | 10% | | | 0 |
|-------------|-----------------------|------|------|------|------|------|---------------------------------|------|------|------|------|------|------|------|------|---|
| ρ_w | 50% | 30% | 10% | 50% | 30% | 10% | 50% | 30% | 10% | 50% | 30% | 10% | 50% | 30% | 10% | 0 |
| ρ_{fc} | 20% | | | 20% | | | 20% | | | 20% | | | 20% | | | 0 |
| RCR | RCR:Room Cavity Ratio | | | | | | Wall Exitance Coefficients(WEC) | | | | | | | | | |
| 0.0 | | | | | | | | | | | | | | | | |
| 1.0 | .313 | .178 | .056 | .306 | .174 | .055 | .292 | .168 | .054 | .280 | .162 | .052 | .269 | .156 | .050 | |
| 2.0 | .294 | .161 | .049 | .287 | .158 | .049 | .276 | .153 | .048 | .265 | .149 | .047 | .255 | .144 | .045 | |
| 3.0 | .271 | .144 | .043 | .266 | .142 | .043 | .256 | .138 | .042 | .246 | .135 | .041 | .237 | .131 | .041 | |
| 4.0 | .250 | .130 | .038 | .245 | .128 | .038 | .236 | .125 | .037 | .228 | .122 | .037 | .220 | .119 | .036 | |
| 5.0 | .231 | .118 | .034 | .227 | .116 | .034 | .219 | .114 | .034 | .211 | .111 | .033 | .204 | .109 | .033 | |
| 6.0 | .214 | .107 | .031 | .210 | .106 | .031 | .203 | .104 | .030 | .196 | .102 | .030 | .190 | .100 | .030 | |
| 7.0 | .199 | .099 | .028 | .196 | .098 | .028 | .189 | .096 | .028 | .183 | .094 | .027 | .178 | .092 | .027 | |
| 8.0 | .186 | .091 | .026 | .183 | .090 | .025 | .177 | .089 | .025 | .172 | .087 | .025 | .167 | .086 | .025 | |
| 9.0 | .174 | .084 | .024 | .172 | .084 | .023 | .166 | .082 | .023 | .162 | .081 | .023 | .157 | .080 | .023 | |
| 10.0 | .164 | .079 | .022 | .162 | .078 | .022 | .157 | .077 | .022 | .152 | .076 | .022 | .148 | .075 | .021 | |

| ρ_{CC} | 80% | | | 70% | | | 50% | | | 30% | | | 10% | | | 0 |
|-------------|-----------------------|------|------|------|------|------|--|------|------|------|------|------|------|------|------|---|
| ρ_w | 50% | 30% | 10% | 50% | 30% | 10% | 50% | 30% | 10% | 50% | 30% | 10% | 50% | 30% | 10% | 0 |
| ρ_{fc} | 20% | | | 20% | | | 20% | | | 20% | | | 20% | | | 0 |
| RCR | RCR:Room Cavity Ratio | | | | | | Ceiling Cavity Exitance Coefficients(CCEC) | | | | | | | | | |
| 0.0 | .190 | .190 | .190 | .163 | .163 | .163 | .111 | .111 | .111 | .064 | .064 | .064 | .020 | .020 | .020 | |
| 1.0 | .181 | .156 | .134 | .154 | .134 | .115 | .106 | .092 | .080 | .061 | .053 | .046 | .019 | .017 | .015 | |
| 2.0 | .172 | .132 | .098 | .148 | .114 | .085 | .101 | .079 | .059 | .058 | .046 | .035 | .019 | .015 | .011 | |
| 3.0 | .165 | .114 | .074 | .141 | .099 | .064 | .097 | .069 | .045 | .056 | .040 | .027 | .018 | .013 | .009 | |
| 4.0 | .157 | .101 | .058 | .135 | .087 | .051 | .093 | .061 | .036 | .054 | .036 | .021 | .017 | .012 | .007 | |
| 5.0 | .150 | .091 | .047 | .129 | .078 | .041 | .089 | .055 | .029 | .051 | .032 | .017 | .017 | .010 | .006 | |
| 6.0 | .142 | .082 | .039 | .122 | .071 | .034 | .084 | .050 | .024 | .049 | .029 | .014 | .016 | .010 | .005 | |
| 7.0 | .136 | .075 | .033 | .117 | .065 | .029 | .081 | .046 | .020 | .047 | .027 | .012 | .015 | .009 | .004 | |
| 8.0 | .129 | .070 | .029 | .111 | .060 | .025 | .077 | .042 | .018 | .045 | .025 | .011 | .014 | .008 | .003 | |
| 9.0 | .123 | .065 | .025 | .106 | .056 | .022 | .073 | .039 | .016 | .043 | .023 | .009 | .014 | .008 | .003 | |
| 10.0 | .117 | .060 | .022 | .101 | .052 | .020 | .070 | .037 | .014 | .041 | .022 | .008 | .013 | .007 | .003 | |

C Range: 0 - 360DEG
 C Interval: 30.0DEG
 Test Speed: HIGH
 Temperature:25.3°C
 Operators:DAMIN
 Test Date:2026-02-01

γ Range: 0 - 90DEG
 γ Interval: 5.0DEG
 Test System:EVERFINE GO-2000B_V1 SYSTEM V2.00.488
 Humidity:65.0%
 Test Distance:6.144m [K=1.0000]
 Remarks:

UGR(Unified Glare Rating) Table

| | | | | | | | | | | |
|---|------------------|------|------|------|-------------|----------------|------|-------------------|------|------|
| Test:U:120.12V I:0.1080A P:12.017W PF:0.9258 Freq:60.00Hz | | | | | | | | | | |
| Lamp Flux:754.194x1 lm | | | | | | | | | | |
| NAME: LS-SM-7R-12W-5CCT-WH | | | | | TYPE: | | | WEIGHT: | | |
| SPEC.: | | | | | DIM.: | | | SERIAL No.: 1#27K | | |
| MFR.: EVERFINE | | | | | SUR.: 0.154 | | | Shielding Angle: | | |
| ceiling/cavity | 0.7 | 0.7 | 0.5 | 0.5 | 0.3 | 0.7 | 0.7 | 0.5 | 0.5 | 0.3 |
| walls | 0.5 | 0.3 | 0.5 | 0.3 | 0.3 | 0.5 | 0.3 | 0.5 | 0.3 | 0.3 |
| working plane | 0.2 | 0.2 | 0.2 | 0.2 | 0.2 | 0.2 | 0.2 | 0.2 | 0.2 | 0.2 |
| Room dimensions | Viewed crosswise | | | | | Viewed endwise | | | | |
| x = 2H y = 2H | 22.9 | 24.5 | 23.2 | 24.7 | 24.9 | 22.8 | 24.3 | 23.0 | 24.5 | 24.7 |
| 3H | 24.5 | 25.9 | 24.8 | 26.2 | 26.4 | 24.3 | 25.7 | 24.6 | 25.9 | 26.2 |
| 4H | 25.2 | 26.5 | 25.5 | 26.8 | 27.0 | 24.9 | 26.2 | 25.2 | 26.5 | 26.7 |
| 6H | 25.7 | 26.9 | 26.0 | 27.2 | 27.5 | 25.3 | 26.6 | 25.6 | 26.9 | 27.1 |
| 8H | 25.8 | 27.1 | 26.2 | 27.3 | 27.6 | 25.4 | 26.7 | 25.8 | 26.9 | 27.2 |
| 12H | 25.9 | 27.1 | 26.3 | 27.4 | 27.7 | 25.5 | 26.7 | 25.9 | 27.0 | 27.3 |
| 4H 2H | 23.5 | 24.9 | 23.9 | 25.1 | 25.4 | 23.4 | 24.7 | 23.7 | 25.0 | 25.3 |
| 3H | 25.3 | 26.5 | 25.7 | 26.8 | 27.1 | 25.1 | 26.3 | 25.5 | 26.6 | 26.9 |
| 4H | 26.1 | 27.2 | 26.5 | 27.5 | 27.8 | 25.8 | 26.9 | 26.2 | 27.2 | 27.6 |
| 6H | 26.7 | 27.7 | 27.1 | 28.1 | 28.4 | 26.4 | 27.3 | 26.8 | 27.7 | 28.1 |
| 8H | 27.0 | 27.9 | 27.4 | 28.2 | 28.6 | 26.6 | 27.5 | 27.0 | 27.8 | 28.2 |
| 12H | 27.1 | 27.9 | 27.5 | 28.3 | 28.7 | 26.7 | 27.5 | 27.1 | 27.9 | 28.3 |
| 8H 4H | 26.4 | 27.3 | 26.8 | 27.6 | 28.0 | 26.1 | 27.0 | 26.5 | 27.4 | 27.8 |
| 6H | 27.2 | 27.9 | 27.6 | 28.3 | 28.7 | 26.8 | 27.6 | 27.3 | 28.0 | 28.4 |
| 8H | 27.5 | 28.1 | 27.9 | 28.6 | 29.0 | 27.1 | 27.8 | 27.6 | 28.2 | 28.6 |
| 12H | 27.7 | 28.3 | 28.2 | 28.7 | 29.2 | 27.3 | 27.9 | 27.8 | 28.3 | 28.8 |
| 12H 4H | 26.4 | 27.2 | 26.8 | 27.6 | 28.0 | 26.2 | 27.0 | 26.6 | 27.4 | 27.8 |
| 6H | 27.2 | 27.9 | 27.7 | 28.3 | 28.8 | 26.9 | 27.6 | 27.4 | 28.0 | 28.5 |
| 8H | 27.6 | 28.2 | 28.1 | 28.6 | 29.1 | 27.2 | 27.8 | 27.7 | 28.2 | 28.7 |
| Variations with the observer position at spacings(CIE Pub.117): | | | | | | | | | | |
| S = 1.0H | + 0.1 / - 0.2 | | | | | + 0.1 / - 0.2 | | | | |
| 1.5H | + 0.2 / - 0.3 | | | | | + 0.2 / - 0.3 | | | | |
| 2.0H | + 0.2 / - 0.3 | | | | | + 0.2 / - 0.3 | | | | |

CIE Pub.117, 754.2 lm Total Lamp Luminous Flux Correct (8log(F/F0) = -1.0)
 Area: 0.0187 m2

C Range: 0 - 360DEG
 C Interval: 30.0DEG
 Test Speed: HIGH
 Temperature:25.3°C
 Operators:DAMIN
 Test Date:2026-02-01

γ Range: 0 - 90DEG
 γ Interval: 5.0DEG
 Test System:EVERFINE GO-2000B_V1 SYSTEM V2.00.488
 Humidity:65.0%
 Test Distance:6.144m [K=1.0000]
 Remarks:

UTILIZATION FACTORS TABLE

| | | |
|---|-------------|-------------------|
| Test:U:120.12V I:0.1080A P:12.017W PF:0.9258 Freq:60.00Hz Lamp Flux:754.194x1 lm | | |
| NAME: LS-SM-7R-12W-5CCT-WH | TYPE: | WEIGHT: |
| SPEC.: | DIM.: | SERIAL No.: 1#27K |
| MFR.: EVERFINE | SUR.: 0.154 | Shielding Angle: |

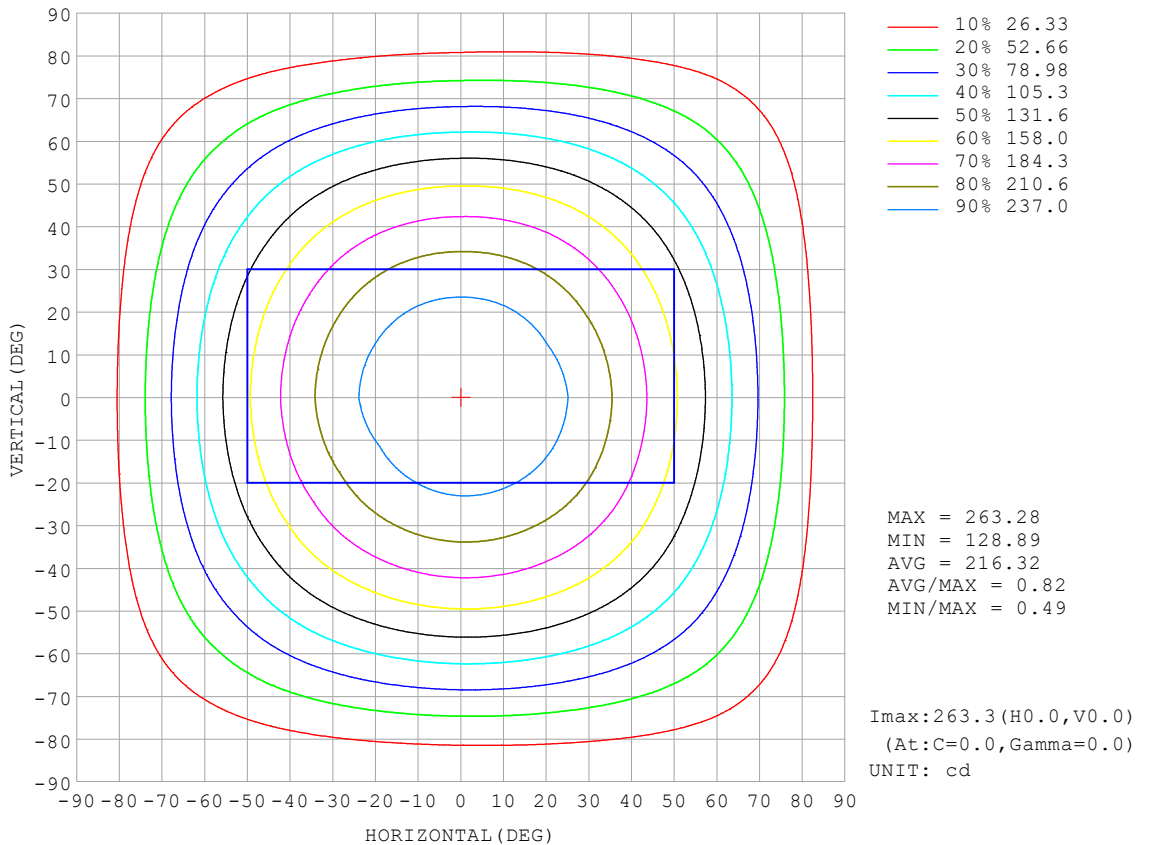
| REFLECTANCE | | | | | | | | | | |
|----------------------------------|--|-----|-----------|-----|-----|-----|---------------|-----|-----|--------|
| Ceiling | 0.8 | 0.8 | 0.8 | 0.7 | 0.7 | 0.7 | 0.5 | 0.5 | 0.5 | 0 |
| Walls | 0.7 | 0.5 | 0.3 | 0.7 | 0.5 | 0.3 | 0.7 | 0.5 | 0.3 | 0 |
| Working plane | 0.2 | 0.2 | 0.2 | 0.2 | 0.2 | 0.2 | 0.2 | 0.2 | 0.2 | 0 |
| ROOM INDEX | UTILIZATION FACTORS (PERCENT) $k(RI) \times RCR = 5$ | | | | | | | | | |
| k = 0.60 | 57 | 46 | 39 | 57 | 45 | 39 | 55 | 45 | 38 | 32 |
| 0.80 | 67 | 56 | 48 | 66 | 55 | 48 | 65 | 54 | 48 | 41 |
| 1.00 | 76 | 65 | 57 | 75 | 64 | 57 | 72 | 65 | 56 | 49 |
| 1.25 | 83 | 72 | 65 | 81 | 72 | 65 | 79 | 70 | 64 | 57 |
| 1.50 | 88 | 78 | 71 | 86 | 77 | 70 | 83 | 75 | 69 | 62 |
| 2.00 | 95 | 86 | 80 | 93 | 85 | 79 | 89 | 83 | 77 | 69 |
| 2.50 | 99 | 91 | 85 | 97 | 89 | 84 | 93 | 87 | 82 | 74 |
| 3.00 | 102 | 95 | 90 | 100 | 94 | 88 | 96 | 91 | 86 | 78 |
| 4.00 | 106 | 100 | 96 | 104 | 99 | 94 | 99 | 95 | 92 | 83 |
| 5.00 | 109 | 104 | 100 | 106 | 102 | 98 | 102 | 98 | 95 | 86 |
| ROOM INDEX | UF(total) | | | | | | | | | Direct |
| According to DIN EN 13032-2 2004 | | | Suspended | | | | SHRNOM = 1.25 | | | |

C Range: 0 - 360DEG
 C Interval: 30.0DEG
 Test Speed: HIGH
 Temperature:25.3°C
 Operators:DAMIN
 Test Date:2026-02-01

γ Range: 0 - 90DEG
 γ Interval: 5.0DEG
 Test System:EVERFINE GO-2000B_V1 SYSTEM V2.00.488
 Humidity:65.0%
 Test Distance:6.144m [K=1.0000]
 Remarks:

ISOCANDELA DIAGRAM

| | | |
|---|-------------|-------------------|
| Test:U:120.12V I:0.1080A P:12.017W PF:0.9258 Freq:60.00Hz Lamp Flux:754.194x1 lm | | |
| NAME: LS-SM-7R-12W-5CCT-WH | TYPE: | WEIGHT: |
| SPEC.: | DIM.: | SERIAL No.: 1#27K |
| MFR.: EVERFINE | SUR.: 0.154 | Shielding Angle: |

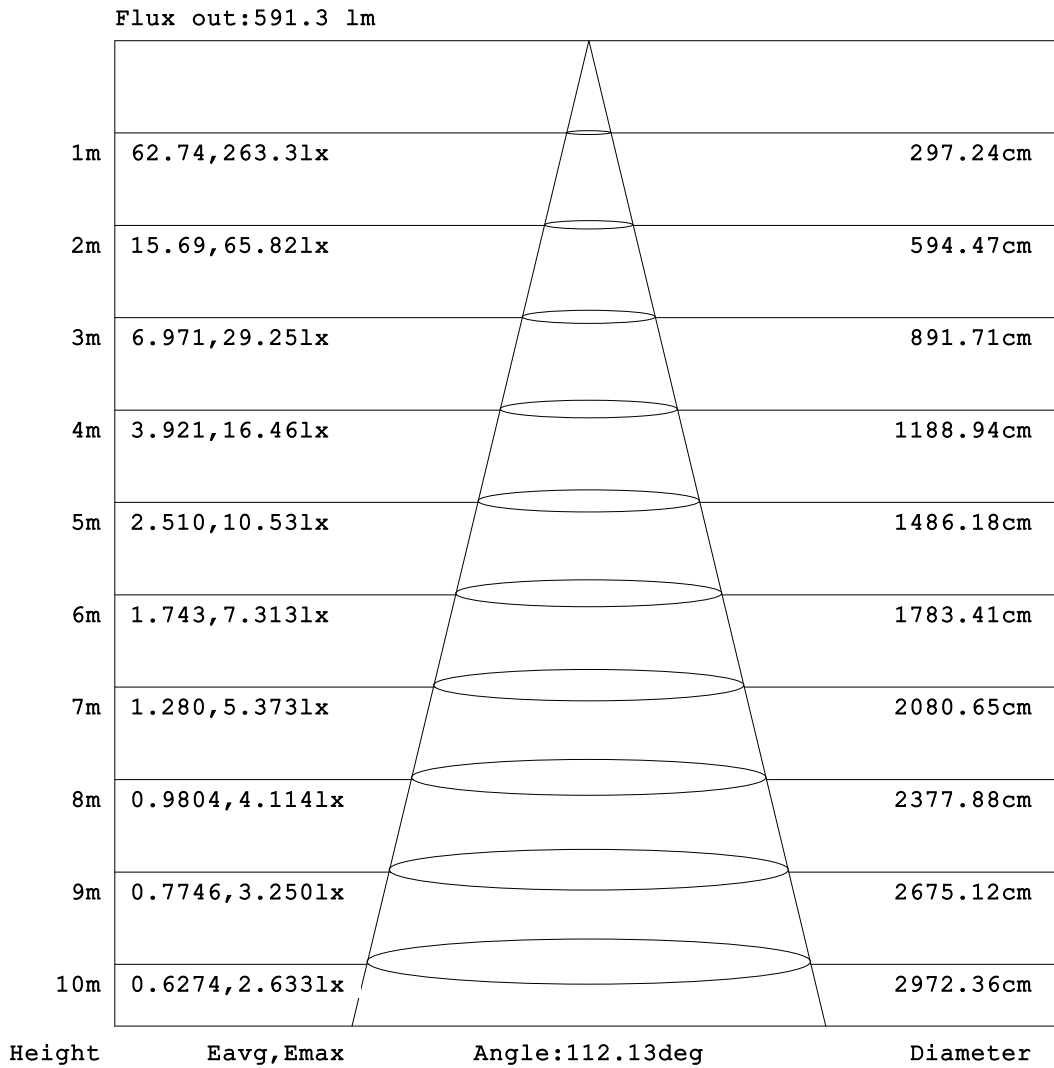


C Range: 0 - 360DEG
 C Interval: 30.0DEG
 Test Speed: HIGH
 Temperature:25.3°C
 Operators:DAMIN
 Test Date:2026-02-01

γ Range: 0 - 90DEG
 γ Interval: 5.0DEG
 Test System:EVERFINE GO-2000B_V1 SYSTEM V2.00.488
 Humidity:65.0%
 Test Distance:6.144m [K=1.0000]
 Remarks:

AAI Figure

| | | |
|---|-------------|-------------------|
| Test:U:120.12V I:0.1080A P:12.017W PF:0.9258 Freq:60.00Hz Lamp Flux:754.194x1 lm | | |
| NAME: LS-SM-7R-12W-5CCT-WH | TYPE: | WEIGHT: |
| SPEC.: | DIM.: | SERIAL No.: 1#27K |
| MFR.: EVERFINE | SUR.: 0.154 | Shielding Angle: |



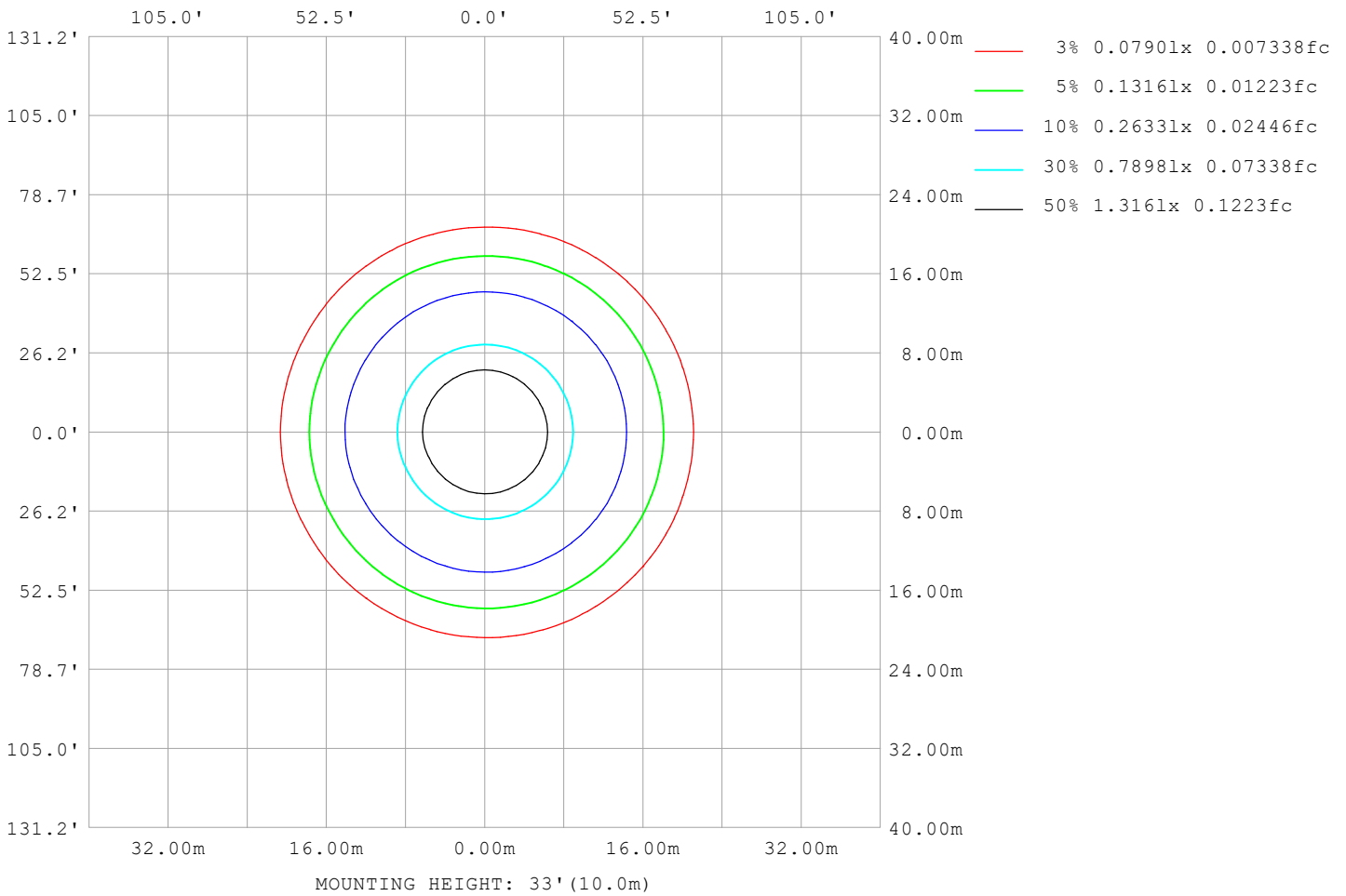
Note:The Curves indicate the illuminated area and the average illumination when the luminaire is at different distance.

C Range: 0 - 360DEG
 C Interval: 30.0DEG
 Test Speed: HIGH
 Temperature:25.3°C
 Operators:DAMIN
 Test Date:2026-02-01

γ Range: 0 - 90DEG
 γ Interval: 5.0DEG
 Test System:EVERFINE GO-2000B_V1 SYSTEM V2.00.488
 Humidity:65.0%
 Test Distance:6.144m [K=1.0000]
 Remarks:

ISOLUX DIAGRAM

| | | |
|---|-------------|-------------------|
| Test:U:120.12V I:0.1080A P:12.017W PF:0.9258 Freq:60.00Hz Lamp Flux:754.194x1 lm | | |
| NAME: LS-SM-7R-12W-5CCT-WH | TYPE: | WEIGHT: |
| SPEC.: | DIM.: | SERIAL No.: 1#27K |
| MFR.: EVERFINE | SUR.: 0.154 | Shielding Angle: |



C Range: 0 - 360DEG
 C Interval: 30.0DEG
 Test Speed: HIGH
 Temperature:25.3°C
 Operators:DAMIN
 Test Date:2026-02-01

γ Range: 0 - 90DEG
 γ Interval: 5.0DEG
 Test System:EVERFINE GO-2000B_V1 SYSTEM V2.00.488
 Humidity:65.0%
 Test Distance:6.144m [K=1.0000]
 Remarks:

LED Avg.L Report

| | | |
|---|-------------|-------------------|
| Test:U:120.12V I:0.1080A P:12.017W PF:0.9258 Freq:60.00Hz Lamp Flux:754.194x1 lm | | |
| NAME: LS-SM-7R-12W-5CCT-WH | TYPE: | WEIGHT: |
| SPEC.: | DIM.: | SERIAL No.: 1#27K |
| MFR.: EVERFINE | SUR.: 0.154 | Shielding Angle: |

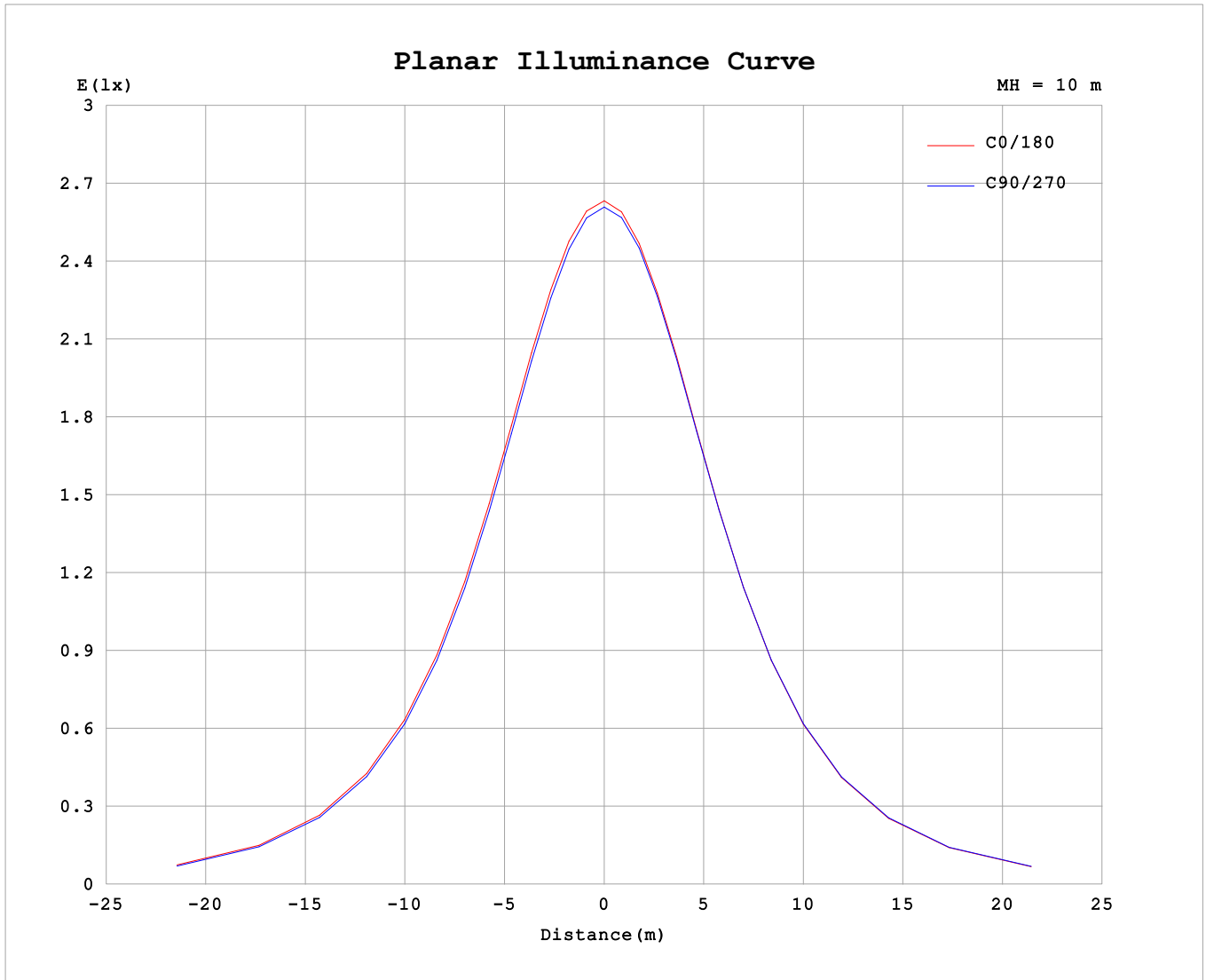
| AvgL | cd/m2 |
|------------------|-------|
| L_0~180 (65) av | 11951 |
| L_0~180 (75) av | 10676 |
| L_0~180 (85) av | 8115 |
| L_90~270 (65) av | 11826 |
| L_90~270 (75) av | 10389 |
| L_90~270 (85) av | 7752 |
| L_45 (65) av | 11896 |
| L_45 (75) av | 10534 |
| L_45 (85) av | 7960 |

Standard: GB/T 29293-2012

C Range: 0 - 360DEG
 C Interval: 30.0DEG
 Test Speed: HIGH
 Temperature:25.3°C
 Operators:DAMIN
 Test Date:2026-02-01

γ Range: 0 - 90DEG
 γ Interval: 5.0DEG
 Test System:EVERFINE GO-2000B_V1 SYSTEM V2.00.488
 Humidity:65.0%
 Test Distance:6.144m [K=1.0000]
 Remarks:

Planar Illuminance Curve



C Range: 0 - 360DEG
 C Interval: 30.0DEG
 Test Speed: HIGH
 Temperature: 25.3°C
 Operators: DAMIN
 Test Date: 2026-02-01

γ Range: 0 - 90DEG
 γ Interval: 5.0DEG
 Test System: EVERFINE GO-2000B_V1 SYSTEM V2.00.488
 Humidity: 65.0%
 Test Distance: 6.144m [K=1.0000]
 Remarks:

