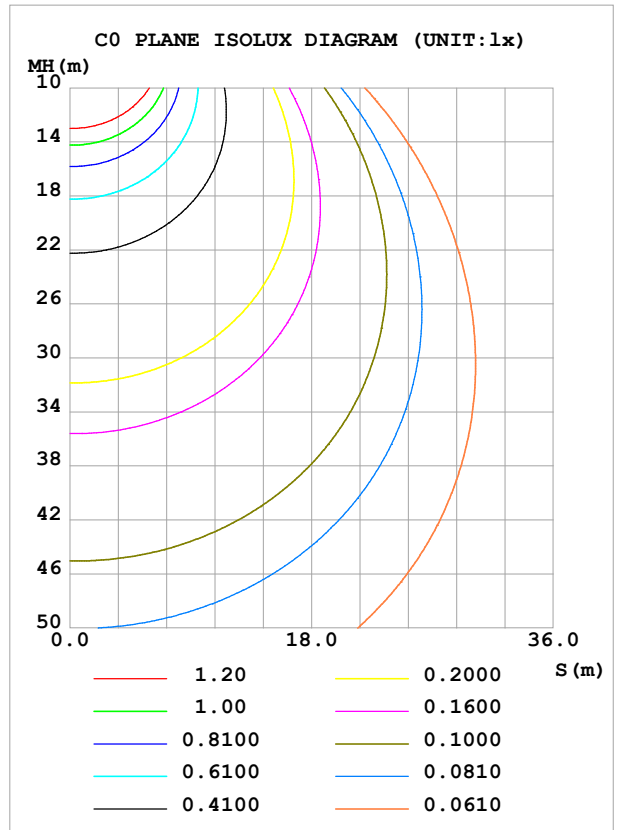
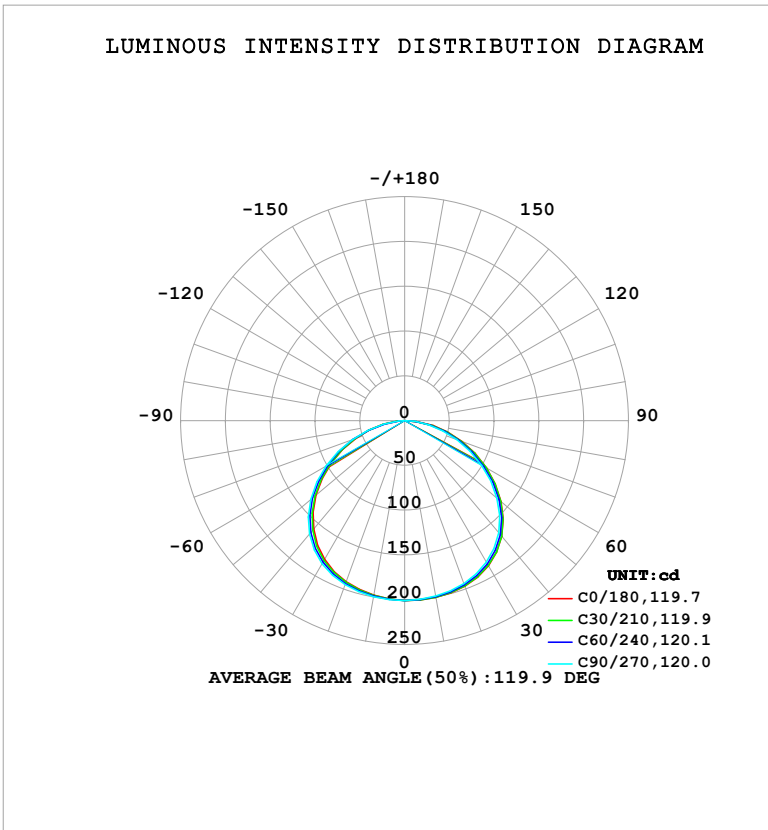


LUMINAIRE PHOTOMETRIC TEST REPORT

Test:U:121.09V I:0.0988A P:11.191W PF:0.9350 Freq:60.00Hz Lamp Flux:634.765x1 lm		
NAME: LS-SM-5R-11W-5CCT-WH	TYPE:	WEIGHT:
SPEC.:	DIM.:	SERIAL No.: 1#27K
MFR.: EVERFINE	SUR.: 0.11	Shielding Angle:

DATA OF LAMP		PHOTOMETRIC DATA			
MODELS-SM-5R-11W-5CCT-WH-27K		Imax (cd)	201.1	S/MH (C0/180)	1.32
NOMINAL POWER (W)	11	LOR (%)	100.0	S/MH (C90/270)	1.36
RATED VOLTAGE (V)	120	TOTAL FLUX (lm)	634.77	η UP, DN (C0-180)	0.0, 50.2
NOMINAL FLUX (lm)	634.765	CIE CLASS	DIRECT	η UP, DN (C180-360)	0.0, 49.8
LAMPS INSIDE	1	η up (%)	0.0	CIBSE SHR NOM	1.50
TEST VOLTAGE (V)	120	η down (%)	100.0	CIBSE SHR MAX	1.50



C Range: 0 - 360DEG
 C Interval: 30.0DEG
 Test Speed: HIGH
 Temperature: 25.3°C
 Operators: DAMIN
 Test Date: 2026-1-30

γ Range: 0 - 90DEG
 γ Interval: 5.0DEG
 Test System: EVERFINE GO-2000B_V1 SYSTEM V2.00.488
 Humidity: 65.0%
 Test Distance: 6.144m [K=1.0000]
 Remarks:

ZONAL FLUX DIAGRAM

ZONAL FLUX DIAGRAM:

γ	C0	C45	C90	C135	C180	C225	C270	C315	γ	Φ zone	Φ total	%lum, lamp
10	200.5	199.9	198.9	198.0	197.9	198.6	199.6	200.4	0- 10	19.09	19.09	3.01,3.01
20	196.7	195.7	193.6	191.4	191.3	192.9	194.9	196.5	10- 20	55.77	74.86	11.8,11.8
30	187.2	185.8	182.7	179.0	178.9	181.5	184.4	186.8	20- 30	87.43	162.3	25.6,25.6
40	168.9	167.3	163.5	158.3	158.0	161.6	165.3	168.4	30- 40	109.2	271.5	42.8,42.8
50	140.7	138.9	134.7	129.2	129.2	132.5	136.7	140.2	40- 50	116.0	387.6	61.1,61.1
60	105.7	103.5	99.37	94.79	94.58	97.33	101.3	105.1	50- 60	105.6	493.2	77.7,77.7
70	68.19	65.84	62.16	58.80	58.52	60.16	62.70	67.34	60- 70	80.82	574.0	90.4,90.4
80	32.28	30.38	27.54	25.17	24.58	23.61	24.11	30.37	70- 80	47.45	621.4	97.9,97.9
90	0.4455	0.5220	0.5396	0.5738	0.5641	0.6136	0.7266	0.8647	80- 90	13.33	634.8	100,100
100									90-100			
110									100-110			
120									110-120			
130									120-130			
140									130-140			
150									140-150			
160									150-160			
170									160-170			
180									170-180			
DEG	LUMINOUS INTENSITY:cd									UNIT:lm		

Conical surface Flux(90deg): 329.78 lm

%lum = 52.0%

%lamp = 52.0%

Conical surface Flux(130deg): 537.37 lm

%lum = 84.7%

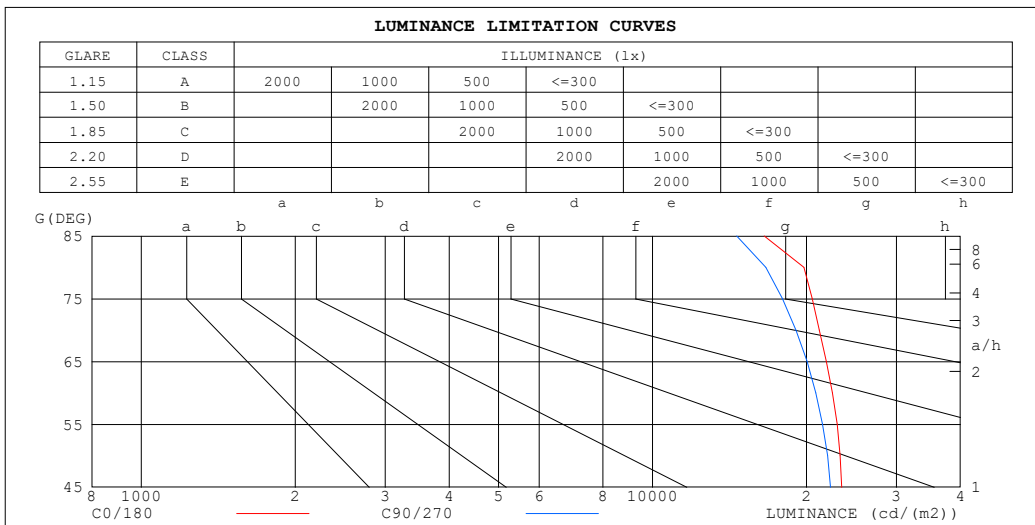
%lamp = 84.7%

C Range: 0 - 360DEG
 C Interval: 30.0DEG
 Test Speed: HIGH
 Temperature:25.3°C
 Operators:DAMIN
 Test Date:2026-1-30

γ Range: 0 - 90DEG
 γ Interval: 5.0DEG
 Test System:EVERFINE GO-2000B_V1 SYSTEM V2.00.488
 Humidity:65.0%
 Test Distance:6.144m [K=1.0000]
 Remarks:

LUMINANCE LIMITATION CURVES

Test:U:121.09V I:0.0988A P:11.191W PF:0.9350 Freq:60.00Hz Lamp Flux:634.765x1 lm		
NAME: LS-SM-5R-11W-5CCT-WH	TYPE:	WEIGHT:
SPEC.:	DIM.:	SERIAL No.: 1#27K
MFR.: EVERFINE	SUR.: 0.11	Shielding Angle:



LUMINANCE cd/(m2)		
G (DEG)	C0/180	C90/270
85	16531	14614
80	19771	16649
75	20536	17963
70	21207	19077
65	21892	20051
60	22494	20859
55	22960	21513
50	23288	21991
45	23455	22282

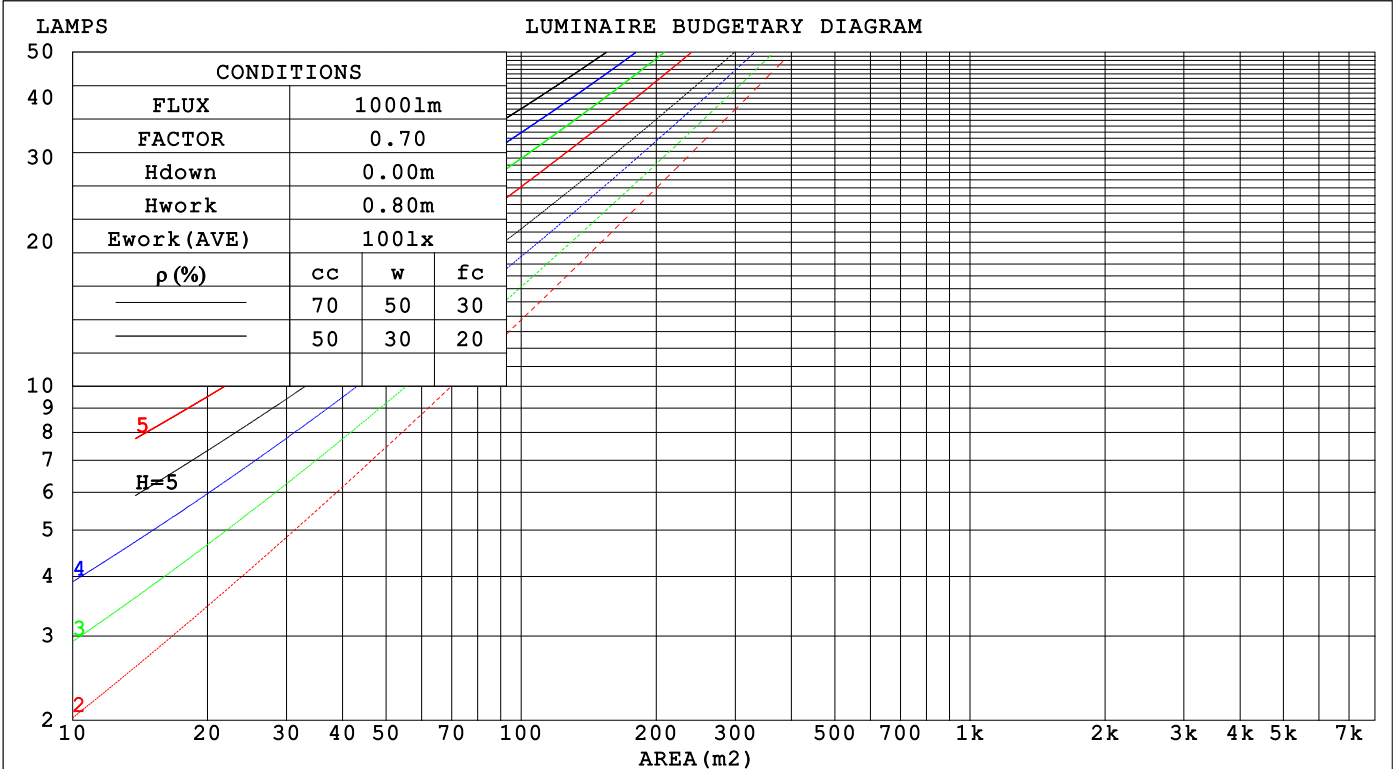
C Range: 0 - 360DEG
 C Interval: 30.0DEG
 Test Speed: HIGH
 Temperature:25.3°C
 Operators:DAMIN
 Test Date:2026-1-30

γ Range: 0 - 90DEG
 γ Interval: 5.0DEG
 Test System:EVERFINE GO-2000B_V1 SYSTEM V2.00.488
 Humidity:65.0%
 Test Distance:6.144m [K=1.0000]
 Remarks:

CU AND LUMINAIRE BUDGETARY ESTIMATE DIAGRAM

Test:U:121.09V I:0.0988A P:11.191W PF:0.9350 Freq:60.00Hz Lamp Flux:634.765x1 lm		
NAME: LS-SM-5R-11W-5CCT-WH	TYPE:	WEIGHT:
SPEC.:	DIM.:	SERIAL No.: 1#27K
MFR.: EVERFINE	SUR.: 0.11	Shielding Angle:

ρcc	80%			70%			50%			30%			10%			0
	ρw	50%	30%	10%	50%	30%	10%	50%	30%	10%	50%	30%	10%	50%	30%	10%
ρfc	20%			20%			20%			20%			20%			0
RCR	RCR:Room Cavity Ratio															
	Coefficients of Utilization(CU)															
0.0	1.19	1.19	1.19	1.16	1.16	1.16	1.11	1.11	1.11	1.06	1.06	1.06	1.02	1.02	1.02	1.00
1.0	1.03	.99	.95	1.01	.97	.94	.97	.94	.91	.93	.90	.88	.89	.87	.85	.83
2.0	.90	.83	.77	.88	.81	.76	.84	.79	.74	.81	.76	.72	.78	.74	.71	.69
3.0	.79	.70	.64	.77	.69	.63	.74	.67	.62	.71	.66	.61	.69	.64	.60	.57
4.0	.69	.60	.54	.68	.60	.53	.66	.58	.52	.63	.57	.52	.61	.55	.51	.49
5.0	.62	.53	.46	.61	.52	.46	.59	.51	.45	.57	.50	.45	.55	.49	.44	.42
6.0	.56	.46	.40	.55	.46	.40	.53	.45	.39	.51	.44	.39	.49	.43	.39	.36
7.0	.50	.41	.35	.49	.41	.35	.48	.40	.35	.46	.39	.34	.45	.39	.34	.32
8.0	.46	.37	.31	.45	.37	.31	.44	.36	.31	.42	.36	.31	.41	.35	.30	.28
9.0	.42	.34	.28	.41	.33	.28	.40	.33	.28	.39	.32	.28	.38	.32	.27	.25
10.0	.39	.31	.25	.38	.30	.25	.37	.30	.25	.36	.30	.25	.35	.29	.25	.23



C Range: 0 - 360DEG
 C Interval: 30.0DEG
 Test Speed: HIGH
 Temperature:25.3°C
 Operators:DAMIN
 Test Date:2026-1-30

γ Range: 0 - 90DEG
 γ Interval: 5.0DEG
 Test System:EVERFINE GO-2000B_V1 SYSTEM V2.00.488
 Humidity:65.0%
 Test Distance:6.144m [K=1.0000]
 Remarks:

WEC AND CCEC

Test:U:121.09V I:0.0988A P:11.191W PF:0.9350 Freq:60.00Hz								
Lamp Flux:634.765x1 lm								
NAME: LS-SM-5R-11W-5CCT-WH			TYPE:			WEIGHT:		
SPEC.:			DIM.:			SERIAL No.: 1#27K		
MFR.: EVERFINE			SUR.: 0.11			Shielding Angle:		

ρ_{CC}	80%			70%			50%			30%			10%			0
ρ_w	50%	30%	10%	50%	30%	10%	50%	30%	10%	50%	30%	10%	50%	30%	10%	0
ρ_{fc}	20%			20%			20%			20%			20%			0
RCR	RCR:Room Cavity Ratio						Wall Exitance Coefficients(WEC)									
0.0																
1.0	.317	.180	.057	.310	.177	.056	.297	.170	.054	.284	.164	.053	.273	.158	.051	
2.0	.298	.163	.050	.291	.161	.049	.280	.156	.048	.269	.151	.047	.259	.146	.046	
3.0	.275	.146	.044	.269	.144	.043	.259	.140	.043	.249	.137	.042	.240	.133	.041	
4.0	.253	.132	.039	.248	.130	.038	.239	.127	.038	.231	.124	.037	.223	.121	.037	
5.0	.234	.119	.035	.230	.118	.034	.221	.115	.034	.214	.113	.034	.207	.110	.033	
6.0	.217	.109	.031	.213	.108	.031	.206	.105	.031	.199	.103	.030	.192	.101	.030	
7.0	.201	.100	.028	.198	.099	.028	.192	.097	.028	.185	.095	.028	.180	.093	.027	
8.0	.188	.092	.026	.185	.091	.026	.179	.089	.026	.174	.088	.025	.168	.086	.025	
9.0	.176	.085	.024	.173	.084	.024	.168	.083	.024	.163	.082	.023	.158	.080	.023	
10.0	.165	.079	.022	.163	.079	.022	.158	.078	.022	.154	.076	.022	.150	.075	.022	

ρ_{CC}	80%			70%			50%			30%			10%			0
ρ_w	50%	30%	10%	50%	30%	10%	50%	30%	10%	50%	30%	10%	50%	30%	10%	0
ρ_{fc}	20%			20%			20%			20%			20%			0
RCR	RCR:Room Cavity Ratio						Ceiling Cavity Exitance Coefficients(CCEC)									
0.0	.190	.190	.190	.163	.163	.163	.111	.111	.111	.064	.064	.064	.020	.020	.020	
1.0	.181	.156	.134	.155	.134	.115	.106	.092	.080	.061	.053	.046	.020	.017	.015	
2.0	.173	.132	.097	.148	.114	.084	.102	.079	.059	.059	.046	.034	.019	.015	.011	
3.0	.165	.114	.074	.142	.099	.064	.097	.069	.045	.056	.040	.026	.018	.013	.009	
4.0	.158	.101	.058	.135	.087	.050	.093	.061	.035	.054	.036	.021	.017	.012	.007	
5.0	.150	.091	.047	.129	.078	.041	.089	.055	.029	.052	.032	.017	.017	.011	.006	
6.0	.143	.082	.039	.123	.071	.034	.085	.050	.024	.049	.029	.014	.016	.010	.005	
7.0	.136	.076	.033	.117	.065	.029	.081	.046	.020	.047	.027	.012	.015	.009	.004	
8.0	.130	.070	.028	.112	.060	.025	.077	.042	.018	.045	.025	.010	.015	.008	.003	
9.0	.124	.065	.025	.107	.056	.022	.074	.040	.015	.043	.023	.009	.014	.008	.003	
10.0	.118	.061	.022	.102	.053	.019	.071	.037	.014	.041	.022	.008	.013	.007	.003	

C Range: 0 - 360DEG
 C Interval: 30.0DEG
 Test Speed: HIGH
 Temperature:25.3°C
 Operators:DAMIN
 Test Date:2026-1-30

γ Range: 0 - 90DEG
 γ Interval: 5.0DEG
 Test System:EVERFINE GO-2000B_V1 SYSTEM V2.00.488
 Humidity:65.0%
 Test Distance:6.144m [K=1.0000]
 Remarks:

UGR(Unified Glare Rating) Table

Test:U:121.09V I:0.0988A P:11.191W PF:0.9350 Freq:60.00Hz Lamp Flux:634.765x1 lm		
NAME: LS-SM-5R-11W-5CCT-WH	TYPE:	WEIGHT:
SPEC.:	DIM.:	SERIAL No.: 1#27K
MFR.: EVERFINE	SUR.: 0.11	Shielding Angle:

ceiling/cavity	0.7	0.7	0.5	0.5	0.3	0.7	0.7	0.5	0.5	0.3
walls	0.5	0.3	0.5	0.3	0.3	0.5	0.3	0.5	0.3	0.3
working plane	0.2	0.2	0.2	0.2	0.2	0.2	0.2	0.2	0.2	0.2

Room dimensions	Viewed crosswise					Viewed endwise				
x = 2H y = 2H	25.6	27.1	25.8	27.3	27.5	25.3	26.8	25.6	27.0	27.2
3H	27.2	28.6	27.5	28.8	29.1	26.8	28.2	27.1	28.4	28.7
4H	27.9	29.2	28.2	29.5	29.7	27.4	28.8	27.7	29.0	29.3
6H	28.4	29.7	28.7	30.0	30.3	27.8	29.1	28.2	29.4	29.7
8H	28.5	29.8	28.9	30.1	30.4	28.0	29.2	28.3	29.5	29.8
12H	28.6	29.8	29.0	30.1	30.4	28.0	29.2	28.4	29.5	29.8
4H 2H	26.2	27.5	26.5	27.8	28.0	25.9	27.3	26.3	27.6	27.8
3H	28.0	29.2	28.3	29.5	29.8	27.6	28.8	28.0	29.1	29.4
4H	28.8	29.9	29.2	30.2	30.6	28.4	29.5	28.7	29.8	30.1
6H	29.5	30.4	29.9	30.8	31.2	28.9	29.9	29.3	30.3	30.6
8H	29.6	30.6	30.1	30.9	31.3	29.1	30.0	29.5	30.4	30.8
12H	29.8	30.6	30.2	31.0	31.4	29.2	30.1	29.7	30.4	30.9
8H 4H	29.1	30.0	29.5	30.4	30.7	28.7	29.6	29.1	30.0	30.4
6H	29.9	30.6	30.3	31.0	31.5	29.4	30.2	29.9	30.6	31.0
8H	30.1	30.8	30.6	31.2	31.7	29.7	30.3	30.1	30.8	31.2
12H	30.3	30.9	30.8	31.4	31.8	29.9	30.4	30.3	30.9	31.4
12H 4H	29.1	29.9	29.5	30.3	30.7	28.7	29.6	29.2	29.9	30.3
6H	29.9	30.6	30.4	31.0	31.5	29.5	30.2	29.9	30.6	31.0
8H	30.2	30.8	30.7	31.2	31.7	29.8	30.4	30.3	30.8	31.3

Variations with the observer position at spacings(CIE Pub.117):		
S = 1.0H	+ 0.1 / - 0.2	+ 0.1 / - 0.2
1.5H	+ 0.1 / - 0.3	+ 0.2 / - 0.3
2.0H	+ 0.2 / - 0.3	+ 0.2 / - 0.3

CIE Pub.117, 634.8 lm Total Lamp Luminous Flux Correct (8log(F/F0) = -1.6)
Area: 0.0095 m2

C Range: 0 - 360DEG
C Interval: 30.0DEG
Test Speed: HIGH
Temperature:25.3°C
Operators:DAMIN
Test Date:2026-1-30

γ Range: 0 - 90DEG
γ Interval: 5.0DEG
Test System:EVERFINE GO-2000B_V1 SYSTEM V2.00.488
Humidity:65.0%
Test Distance:6.144m [K=1.0000]
Remarks:

UTILIZATION FACTORS TABLE

Test:U:121.09V I:0.0988A P:11.191W PF:0.9350 Freq:60.00Hz Lamp Flux:634.765x1 lm		
NAME: LS-SM-5R-11W-5CCT-WH	TYPE:	WEIGHT:
SPEC.:	DIM.:	SERIAL No.: 1#27K
MFR.: EVERFINE	SUR.: 0.11	Shielding Angle:

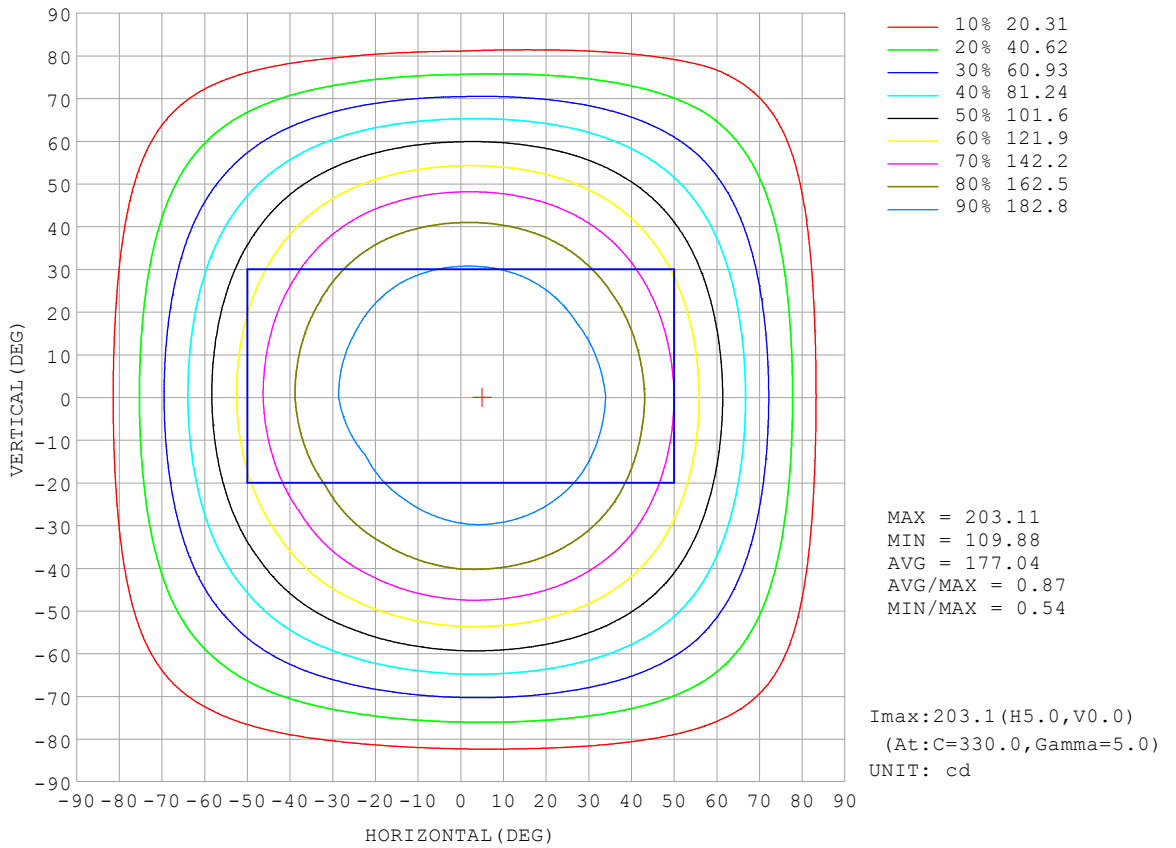
REFLECTANCE										
Ceiling	0.8	0.8	0.8	0.7	0.7	0.7	0.5	0.5	0.5	0
Walls	0.7	0.5	0.3	0.7	0.5	0.3	0.7	0.5	0.3	0
Working plane	0.2	0.2	0.2	0.2	0.2	0.2	0.2	0.2	0.2	0
ROOM INDEX	UTILIZATION FACTORS (PERCENT) $k(RI) \times RCR = 5$									
k = 0.60	56	45	38	56	44	37	54	44	37	31
0.80	67	55	47	65	54	47	64	53	47	40
1.00	75	64	56	74	63	56	72	65	55	48
1.25	82	72	64	81	71	64	78	69	63	56
1.50	87	77	70	86	76	70	83	75	68	61
2.00	94	86	79	92	84	78	89	82	77	69
2.50	98	90	84	96	89	83	92	86	81	73
3.00	102	95	89	100	93	88	95	90	86	77
4.00	106	100	95	103	98	94	99	95	91	82
5.00	108	103	99	106	101	98	101	98	95	85
ROOM INDEX	UF(total)									Direct
According to DIN EN 13032-2 2004			Suspended				SHRNOM = 1.25			

C Range: 0 - 360DEG
 C Interval: 30.0DEG
 Test Speed: HIGH
 Temperature:25.3°C
 Operators:DAMIN
 Test Date:2026-1-30

γ Range: 0 - 90DEG
 γ Interval: 5.0DEG
 Test System:EVERFINE GO-2000B_V1 SYSTEM V2.00.488
 Humidity:65.0%
 Test Distance:6.144m [K=1.0000]
 Remarks:

ISOCANDELA DIAGRAM

Test:U:121.09V I:0.0988A P:11.191W PF:0.9350 Freq:60.00Hz Lamp Flux:634.765x1 lm		
NAME: LS-SM-5R-11W-5CCT-WH	TYPE:	WEIGHT:
SPEC.:	DIM.:	SERIAL No.: 1#27K
MFR.: EVERFINE	SUR.: 0.11	Shielding Angle:

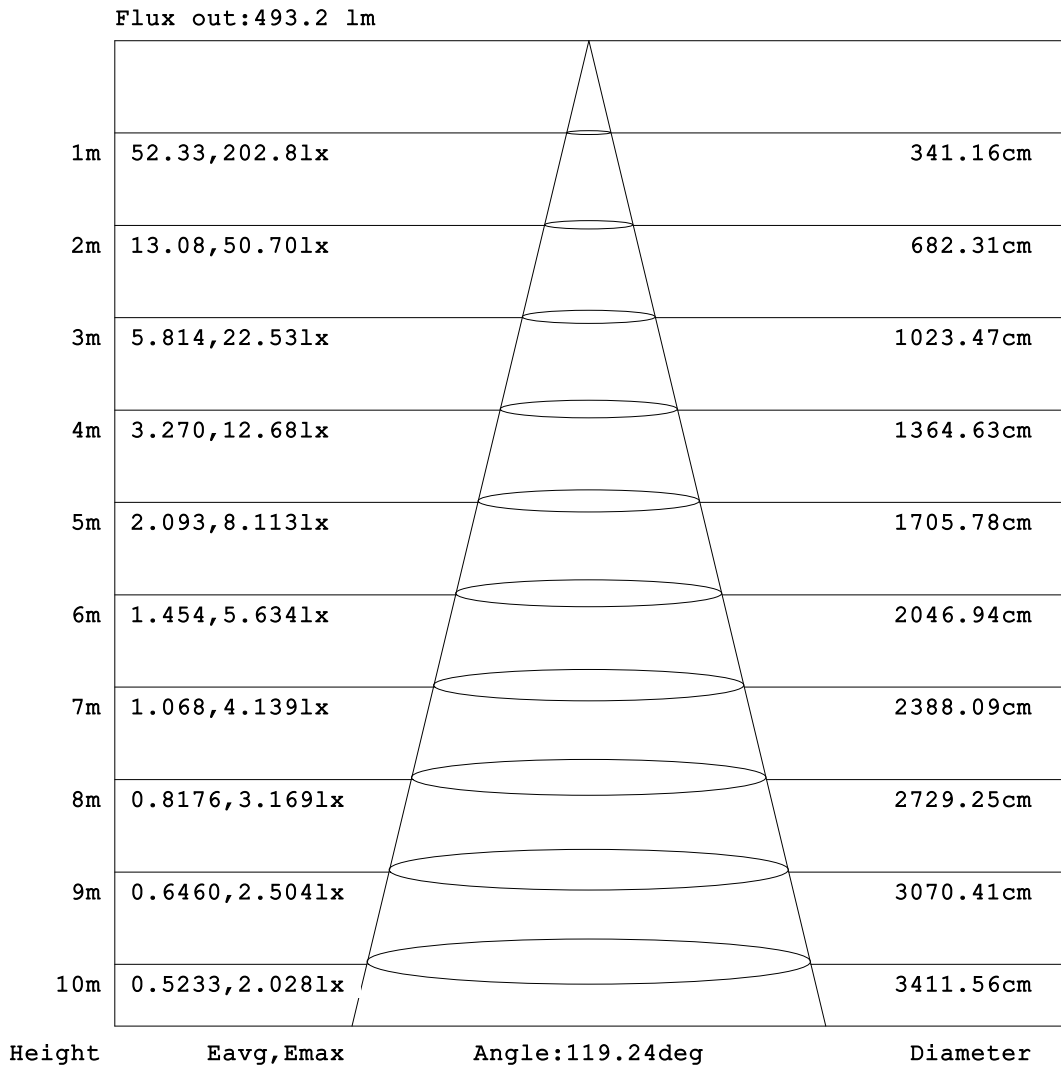


C Range: 0 - 360DEG
 C Interval: 30.0DEG
 Test Speed: HIGH
 Temperature:25.3°C
 Operators:DAMIN
 Test Date:2026-1-30

γ Range: 0 - 90DEG
 γ Interval: 5.0DEG
 Test System:EVERFINE GO-2000B_V1 SYSTEM V2.00.488
 Humidity:65.0%
 Test Distance:6.144m [K=1.0000]
 Remarks:

AAI Figure

Test:U:121.09V I:0.0988A P:11.191W PF:0.9350 Freq:60.00Hz Lamp Flux:634.765x1 lm		
NAME: LS-SM-5R-11W-5CCT-WH	TYPE:	WEIGHT:
SPEC.:	DIM.:	SERIAL No.: 1#27K
MFR.: EVERFINE	SUR.: 0.11	Shielding Angle:



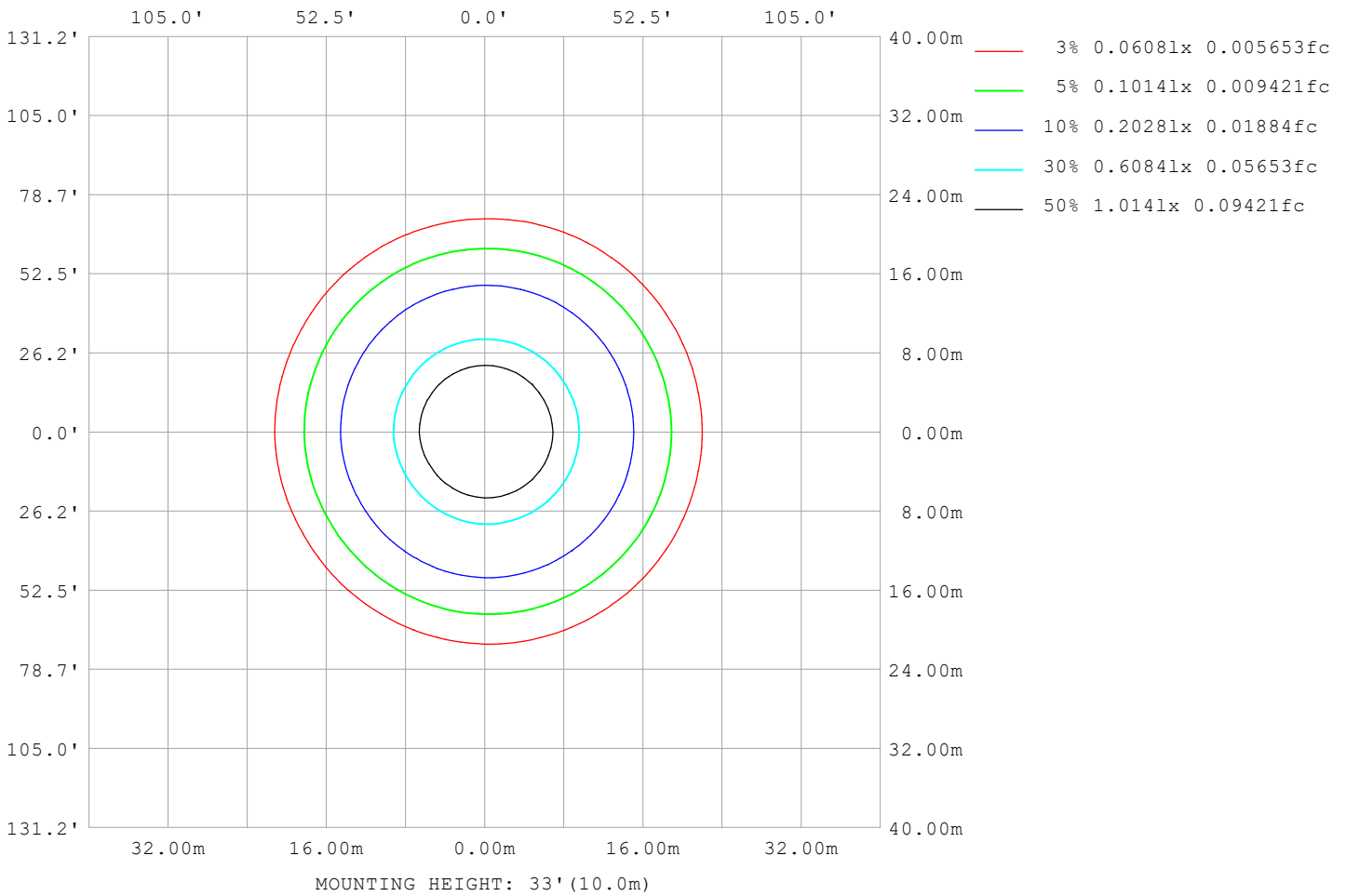
Note:The Curves indicate the illuminated area and the average illumination when the luminaire is at different distance.

C Range: 0 - 360DEG
C Interval: 30.0DEG
Test Speed: HIGH
Temperature:25.3°C
Operators:DAMIN
Test Date:2026-1-30

γ Range: 0 - 90DEG
γ Interval: 5.0DEG
Test System:EVERFINE GO-2000B_V1 SYSTEM V2.00.488
Humidity:65.0%
Test Distance:6.144m [K=1.0000]
Remarks:

ISOLUX DIAGRAM

Test:U:121.09V I:0.0988A P:11.191W PF:0.9350 Freq:60.00Hz Lamp Flux:634.765x1 lm		
NAME: LS-SM-5R-11W-5CCT-WH	TYPE:	WEIGHT:
SPEC.:	DIM.:	SERIAL No.: 1#27K
MFR.: EVERFINE	SUR.: 0.11	Shielding Angle:



C Range: 0 - 360DEG
 C Interval: 30.0DEG
 Test Speed: HIGH
 Temperature:25.3°C
 Operators:DAMIN
 Test Date:2026-1-30

γ Range: 0 - 90DEG
 γ Interval: 5.0DEG
 Test System:EVERFINE GO-2000B_V1 SYSTEM V2.00.488
 Humidity:65.0%
 Test Distance:6.144m [K=1.0000]
 Remarks:

LED Avg.L Report

Test:U:121.09V I:0.0988A P:11.191W PF:0.9350 Freq:60.00Hz Lamp Flux:634.765x1 lm		
NAME: LS-SM-5R-11W-5CCT-WH	TYPE:	WEIGHT:
SPEC.:	DIM.:	SERIAL No.: 1#27K
MFR.: EVERFINE	SUR.: 0.11	Shielding Angle:

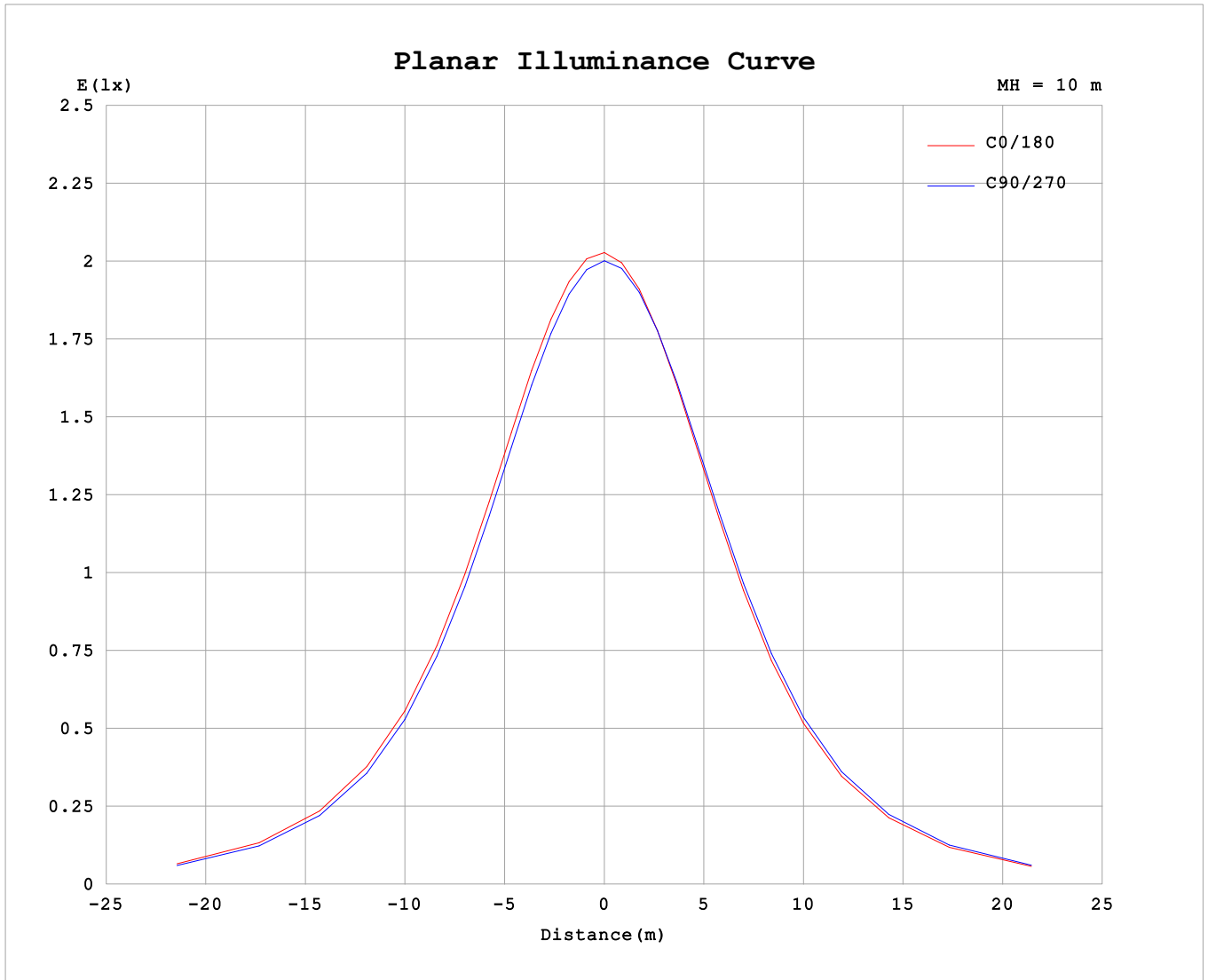
AvgL	cd/m2
L_0~180 (65) av	20363
L_0~180 (75) av	18529
L_0~180 (85) av	13575
L_90~270 (65) av	20294
L_90~270 (75) av	17758
L_90~270 (85) av	11279
L_45 (65) av	20328
L_45 (75) av	18251
L_45 (85) av	12916

Standard: GB/T 29293-2012

C Range: 0 - 360DEG
 C Interval: 30.0DEG
 Test Speed: HIGH
 Temperature:25.3°C
 Operators:DAMIN
 Test Date:2026-1-30

γ Range: 0 - 90DEG
 γ Interval: 5.0DEG
 Test System:EVERFINE GO-2000B_V1 SYSTEM V2.00.488
 Humidity:65.0%
 Test Distance:6.144m [K=1.0000]
 Remarks:

Planar Illuminance Curve



C Range: 0 - 360DEG
 C Interval: 30.0DEG
 Test Speed: HIGH
 Temperature: 25.3°C
 Operators: DAMIN
 Test Date: 2026-1-30

γ Range: 0 - 90DEG
 γ Interval: 5.0DEG
 Test System: EVERFINE GO-2000B_V1 SYSTEM V2.00.488
 Humidity: 65.0%
 Test Distance: 6.144m [K=1.0000]
 Remarks:

