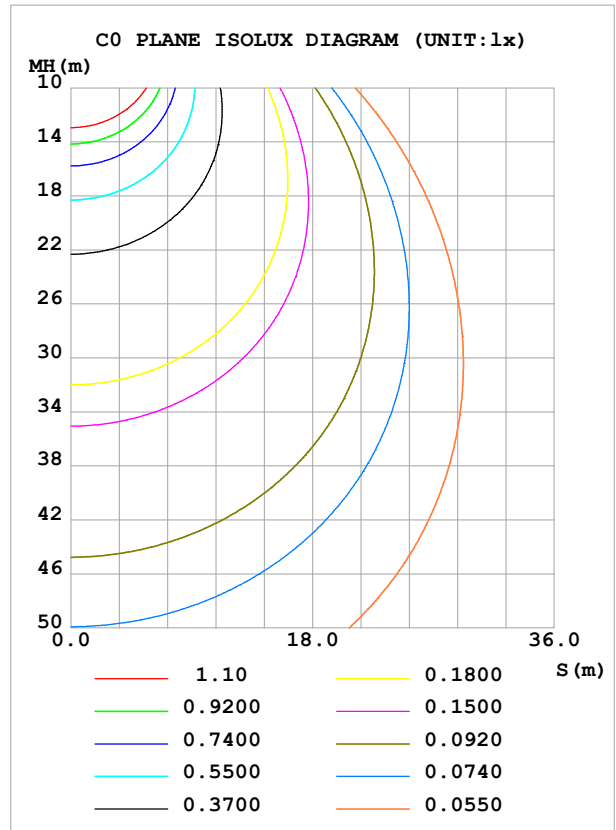
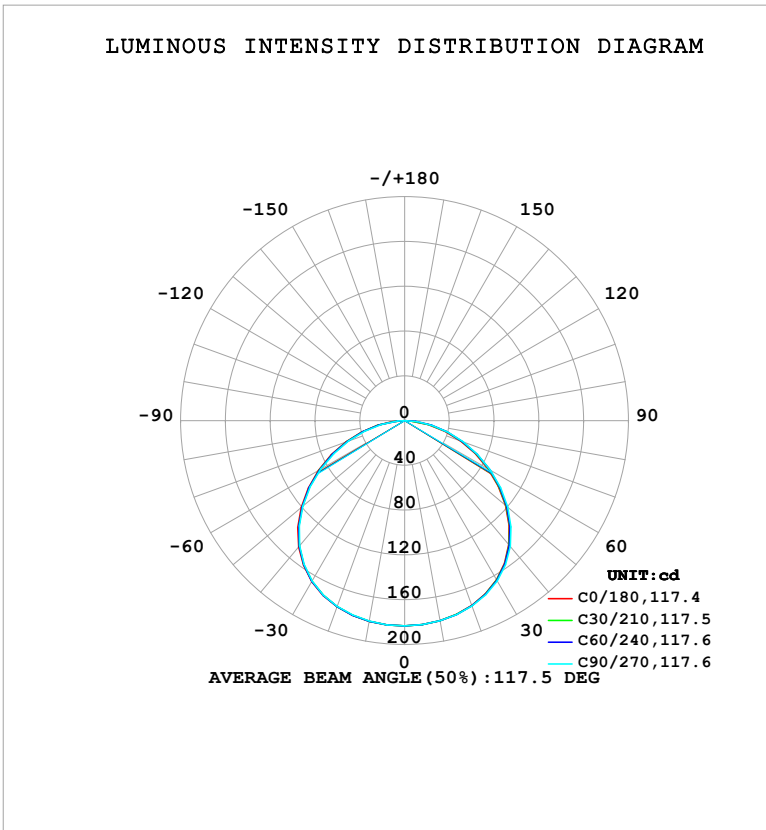


LUMINAIRE PHOTOMETRIC TEST REPORT

Test:U:120.18V I:0.0978A P:10.973W PF:0.9339 Freq:60.00Hz Lamp Flux:563.515x1 lm		
NAME: LS-SM-5R-11W-5CCT-BL	TYPE:	WEIGHT:
SPEC.:	DIM.:	SERIAL No.: 1#27K
MFR.: EVERFINE	SUR.: 0.11	Shielding Angle:

DATA OF LAMP		PHOTOMETRIC DATA			
MODELS-SM-5R-11W-5CCT-BL-27K		Imax (cd)	183.3	S/MH (C0/180)	1.34
NOMINAL POWER (W)	11	LOR (%)	100.0	S/MH (C90/270)	1.34
RATED VOLTAGE (V)	120	TOTAL FLUX (lm)	563.52	η UP, DN (C0-180)	0.0, 50.1
NOMINAL FLUX (lm)	563.515	CIE CLASS	DIRECT	η UP, DN (C180-360)	0.0, 49.9
LAMPS INSIDE	1	η up (%)	0.0	CIBSE SHR NOM	1.50
TEST VOLTAGE (V)	120	η down (%)	100.0	CIBSE SHR MAX	1.50



C Range: 0 - 360DEG
 C Interval: 30.0DEG
 Test Speed: HIGH
 Temperature: 25.3°C
 Operators: DAMIN
 Test Date: 2026-01-31

γ Range: 0 - 90DEG
 γ Interval: 5.0DEG
 Test System: EVERFINE GO-2000B_V1 SYSTEM V2.00.488
 Humidity: 65.0%
 Test Distance: 6.144m [K=1.0000]
 Remarks:

ZONAL FLUX DIAGRAM

ZONAL FLUX DIAGRAM:

γ	C0	C45	C90	C135	C180	C225	C270	C315	γ	Φ zone	Φ total	%lum, lamp
10	181.4	181.5	181.6	181.8	182.0	182.0	181.9	181.8	0- 10	17.42	17.42	3.09,3.09
20	175.7	175.9	176.2	176.5	177.0	176.8	176.5	176.4	10- 20	50.78	68.20	12.1,12.1
30	164.2	164.6	165.4	165.7	166.2	165.8	165.3	165.2	20- 30	79.16	147.4	26.2,26.2
40	144.7	145.6	146.8	147.1	147.4	146.6	146.0	146.0	30- 40	98.01	245.4	43.5,43.5
50	117.6	118.9	120.3	120.4	120.8	119.7	118.8	118.7	40- 50	103.0	348.4	61.8,61.8
60	85.91	87.49	88.71	88.47	88.90	87.76	86.60	86.47	50- 60	92.78	441.1	78.3,78.3
70	53.16	54.86	55.75	55.17	55.84	54.71	53.26	53.12	60- 70	70.27	511.4	90.8,90.8
80	21.20	23.62	25.07	24.49	25.09	23.61	21.31	21.89	70- 80	40.90	552.3	98,98
90	0.3674	0.3901	0.4018	0.4239	0.4567	0.4849	0.5419	0.4637	80- 90	11.22	563.5	100,100
100									90-100			
110									100-110			
120									110-120			
130									120-130			
140									130-140			
150									140-150			
160									150-160			
170									160-170			
180									170-180			
DEG	LUMINOUS INTENSITY:cd									UNIT:lm		

Conical surface Flux(90deg): 297.21 lm

%lum = 52.7%

%lamp = 52.7%

Conical surface Flux(130deg): 479.65 lm

%lum = 85.1%

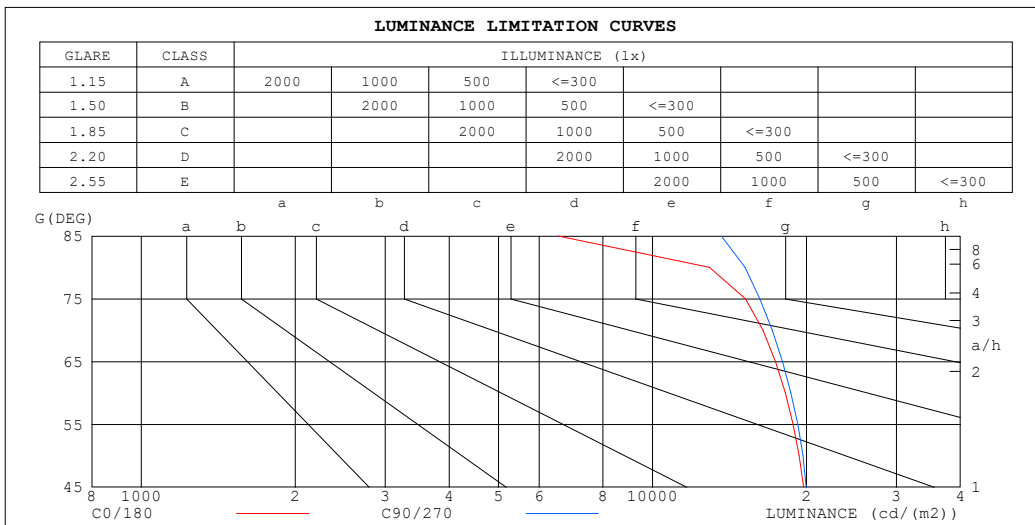
%lamp = 85.1%

C Range: 0 - 360DEG
 C Interval: 30.0DEG
 Test Speed: HIGH
 Temperature:25.3°C
 Operators:DAMIN
 Test Date:2026-01-31

γ Range: 0 - 90DEG
 γ Interval: 5.0DEG
 Test System:EVERFINE GO-2000B_V1 SYSTEM V2.00.488
 Humidity:65.0%
 Test Distance:6.144m [K=1.0000]
 Remarks:

LUMINANCE LIMITATION CURVES

Test:U:120.18V I:0.0978A P:10.973W PF:0.9339 Freq:60.00Hz Lamp Flux:563.515x1 lm		
NAME: LS-SM-5R-11W-5CCT-BL	TYPE:	WEIGHT:
SPEC.:	DIM.:	SERIAL No.: 1#27K
MFR.: EVERFINE	SUR.: 0.11	Shielding Angle:



LUMINANCE cd/(m2)		
G (DEG)	C0/180	C90/270
85	6538	13631
80	12927	15176
75	15188	16219
70	16454	17136
65	17387	17947
60	18190	18651
55	18835	19229
50	19361	19677
45	19753	19982

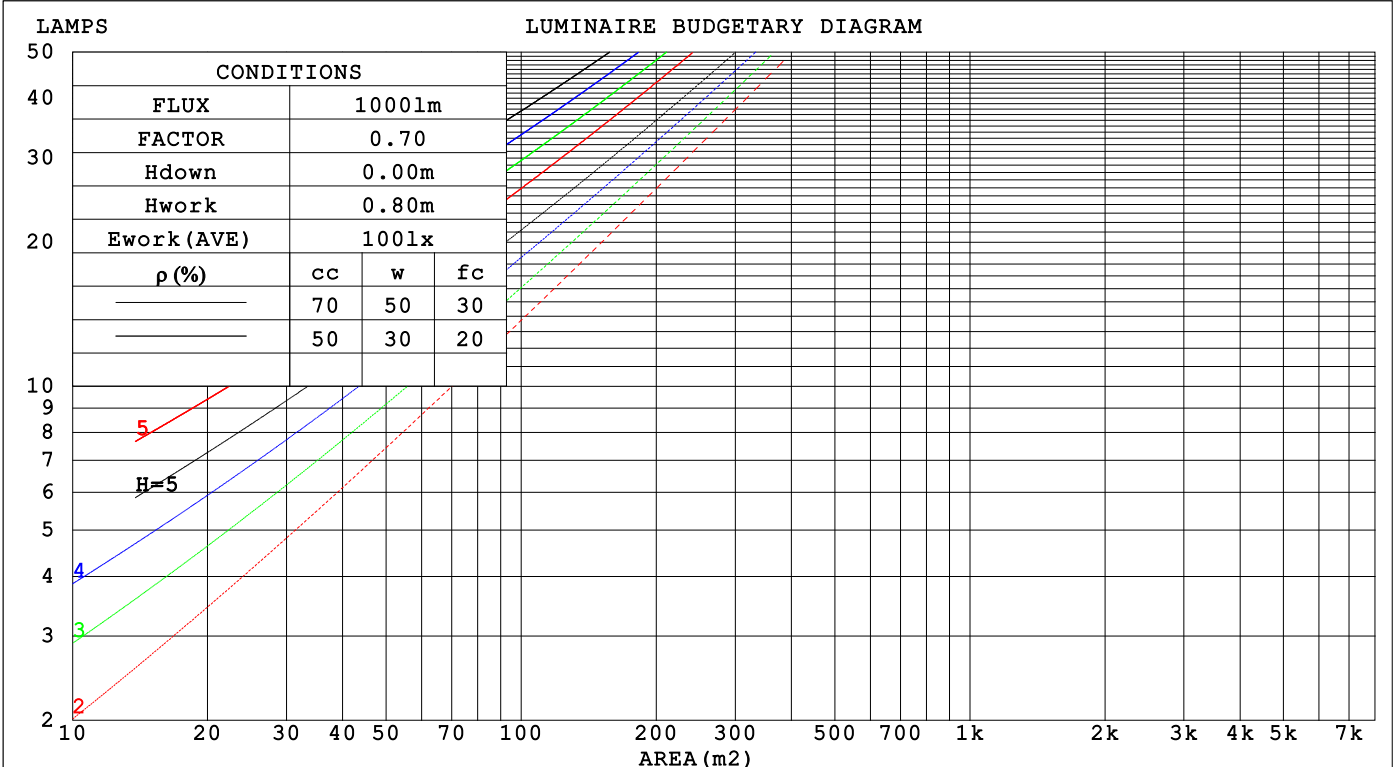
C Range: 0 - 360DEG
 C Interval: 30.0DEG
 Test Speed: HIGH
 Temperature:25.3°C
 Operators:DAMIN
 Test Date:2026-01-31

γ Range: 0 - 90DEG
 γ Interval: 5.0DEG
 Test System:EVERFINE GO-2000B_V1 SYSTEM V2.00.488
 Humidity:65.0%
 Test Distance:6.144m [K=1.0000]
 Remarks:

CU AND LUMINAIRE BUDGETARY ESTIMATE DIAGRAM

Test:U:120.18V I:0.0978A P:10.973W PF:0.9339 Freq:60.00Hz Lamp Flux:563.515x1 lm		
NAME: LS-SM-5R-11W-5CCT-BL	TYPE:	WEIGHT:
SPEC.:	DIM.:	SERIAL No.: 1#27K
MFR.: EVERFINE	SUR.: 0.11	Shielding Angle:

ρcc	80%			70%			50%			30%			10%			0
ρw	50%	30%	10%	50%	30%	10%	50%	30%	10%	50%	30%	10%	50%	30%	10%	0
ρfc	20%			20%			20%			20%			20%			0
RCR	RCR:Room Cavity Ratio															
	Coefficients of Utilization(CU)															
0.0	1.19	1.19	1.19	1.16	1.16	1.16	1.11	1.11	1.11	1.06	1.06	1.06	1.02	1.02	1.02	1.00
1.0	1.04	.99	.95	1.01	.97	.94	.97	.94	.91	.93	.91	.88	.90	.87	.85	.83
2.0	.90	.83	.77	.88	.82	.76	.85	.79	.75	.81	.77	.73	.78	.75	.71	.69
3.0	.79	.71	.64	.77	.70	.63	.74	.68	.62	.72	.66	.61	.69	.64	.60	.58
4.0	.70	.61	.54	.68	.60	.54	.66	.59	.53	.64	.57	.52	.61	.56	.51	.49
5.0	.62	.53	.46	.61	.52	.46	.59	.51	.46	.57	.50	.45	.55	.49	.45	.42
6.0	.56	.47	.40	.55	.46	.40	.53	.45	.40	.51	.45	.39	.50	.44	.39	.37
7.0	.51	.42	.35	.50	.41	.35	.48	.41	.35	.47	.40	.35	.45	.39	.35	.33
8.0	.46	.37	.32	.45	.37	.31	.44	.37	.31	.43	.36	.31	.42	.35	.31	.29
9.0	.42	.34	.28	.42	.34	.28	.40	.33	.28	.39	.33	.28	.38	.32	.28	.26
10.0	.39	.31	.26	.38	.31	.26	.37	.30	.25	.36	.30	.25	.36	.30	.25	.23



C Range: 0 - 360DEG
 C Interval: 30.0DEG
 Test Speed: HIGH
 Temperature:25.3°C
 Operators:DAMIN
 Test Date:2026-01-31

γ Range: 0 - 90DEG
 γ Interval: 5.0DEG
 Test System:EVERFINE GO-2000B_V1 SYSTEM V2.00.488
 Humidity:65.0%
 Test Distance:6.144m [K=1.0000]
 Remarks:

WEC AND CCEC

Test:U:120.18V I:0.0978A P:10.973W PF:0.9339 Freq:60.00Hz Lamp Flux:563.515x1 lm								
NAME: LS-SM-5R-11W-5CCT-BL			TYPE:			WEIGHT:		
SPEC.:			DIM.:			SERIAL No.: 1#27K		
MFR.: EVERFINE			SUR.: 0.11			Shielding Angle:		

ρ_{CC}	80%			70%			50%			30%			10%			0
ρ_w	50%	30%	10%	50%	30%	10%	50%	30%	10%	50%	30%	10%	50%	30%	10%	0
ρ_{fc}	20%			20%			20%			20%			20%			0
RCR	RCR:Room Cavity Ratio						Wall Exitance Coefficients (WEC)									
0.0																
1.0	.314	.178	.057	.307	.175	.056	.293	.168	.054	.281	.162	.052	.270	.156	.050	
2.0	.295	.162	.050	.289	.159	.049	.277	.154	.048	.266	.149	.047	.256	.145	.046	
3.0	.273	.145	.043	.267	.143	.043	.257	.139	.042	.247	.135	.042	.238	.132	.041	
4.0	.252	.131	.038	.247	.129	.038	.237	.126	.038	.229	.123	.037	.221	.120	.037	
5.0	.232	.118	.034	.228	.117	.034	.220	.115	.034	.212	.112	.033	.205	.110	.033	
6.0	.215	.108	.031	.212	.107	.031	.204	.105	.030	.198	.103	.030	.191	.101	.030	
7.0	.200	.099	.028	.197	.098	.028	.191	.096	.028	.184	.095	.028	.179	.093	.027	
8.0	.187	.091	.026	.184	.091	.026	.178	.089	.025	.173	.088	.025	.168	.086	.025	
9.0	.175	.085	.024	.173	.084	.024	.167	.083	.023	.162	.081	.023	.158	.080	.023	
10.0	.165	.079	.022	.162	.078	.022	.158	.077	.022	.153	.076	.022	.149	.075	.021	

ρ_{CC}	80%			70%			50%			30%			10%			0
ρ_w	50%	30%	10%	50%	30%	10%	50%	30%	10%	50%	30%	10%	50%	30%	10%	0
ρ_{fc}	20%			20%			20%			20%			20%			0
RCR	RCR:Room Cavity Ratio						Ceiling Cavity Exitance Coefficients (CCEC)									
0.0	.190	.190	.190	.163	.163	.163	.111	.111	.111	.064	.064	.064	.020	.020	.020	
1.0	.181	.156	.134	.155	.134	.115	.106	.092	.080	.061	.053	.046	.019	.017	.015	
2.0	.173	.132	.098	.148	.114	.084	.101	.079	.059	.058	.046	.035	.019	.015	.011	
3.0	.165	.114	.074	.141	.099	.064	.097	.069	.045	.056	.040	.026	.018	.013	.009	
4.0	.157	.101	.058	.135	.087	.050	.093	.061	.035	.054	.036	.021	.017	.012	.007	
5.0	.150	.091	.047	.129	.078	.041	.089	.055	.029	.051	.032	.017	.017	.010	.006	
6.0	.143	.082	.039	.123	.071	.034	.085	.050	.024	.049	.029	.014	.016	.010	.005	
7.0	.136	.075	.033	.117	.065	.029	.081	.046	.020	.047	.027	.012	.015	.009	.004	
8.0	.130	.070	.029	.112	.060	.025	.077	.042	.018	.045	.025	.011	.015	.008	.003	
9.0	.123	.065	.025	.106	.056	.022	.074	.039	.016	.043	.023	.009	.014	.008	.003	
10.0	.118	.060	.022	.101	.052	.019	.070	.037	.014	.041	.022	.008	.013	.007	.003	

C Range: 0 - 360DEG
 C Interval: 30.0DEG
 Test Speed: HIGH
 Temperature:25.3°C
 Operators:DAMIN
 Test Date:2026-01-31

γ Range: 0 - 90DEG
 γ Interval: 5.0DEG
 Test System:EVERFINE GO-2000B_V1 SYSTEM V2.00.488
 Humidity:65.0%
 Test Distance:6.144m [K=1.0000]
 Remarks:

UGR(Unified Glare Rating) Table

Test:U:120.18V I:0.0978A P:10.973W PF:0.9339 Freq:60.00Hz										
Lamp Flux:563.515x1 lm										
NAME: LS-SM-5R-11W-5CCT-BL					TYPE:			WEIGHT:		
SPEC.:					DIM.:			SERIAL No.: 1#27K		
MFR.: EVERFINE					SUR.: 0.11			Shielding Angle:		
ceiling/cavity	0.7	0.7	0.5	0.5	0.3	0.7	0.7	0.5	0.5	0.3
walls	0.5	0.3	0.5	0.3	0.3	0.5	0.3	0.5	0.3	0.3
working plane	0.2	0.2	0.2	0.2	0.2	0.2	0.2	0.2	0.2	0.2
Room dimensions	Viewed crosswise					Viewed endwise				
x = 2H y = 2H	25.1	26.6	25.4	26.9	27.1	25.2	26.7	25.5	26.9	27.1
3H	26.6	28.0	26.9	28.3	28.5	26.7	28.1	27.0	28.4	28.6
4H	27.2	28.5	27.5	28.8	29.1	27.3	28.7	27.6	28.9	29.2
6H	27.6	28.8	27.9	29.1	29.4	27.8	29.1	28.1	29.3	29.6
8H	27.6	28.8	27.9	29.1	29.4	27.9	29.2	28.3	29.4	29.7
12H	27.5	28.7	27.9	29.0	29.3	28.0	29.2	28.4	29.5	29.8
4H 2H	25.7	27.1	26.0	27.3	27.6	25.8	27.1	26.1	27.4	27.6
3H	27.4	28.6	27.8	28.9	29.2	27.5	28.7	27.8	29.0	29.3
4H	28.1	29.2	28.5	29.5	29.9	28.2	29.3	28.6	29.7	30.0
6H	28.6	29.6	29.0	29.9	30.3	28.8	29.8	29.2	30.1	30.5
8H	28.6	29.5	29.0	29.9	30.3	29.0	29.9	29.4	30.3	30.7
12H	28.6	29.5	29.1	29.8	30.2	29.1	30.0	29.6	30.3	30.8
8H 4H	28.4	29.3	28.8	29.7	30.1	28.5	29.4	28.9	29.8	30.2
6H	29.0	29.7	29.4	30.1	30.6	29.2	30.0	29.7	30.4	30.8
8H	29.1	29.7	29.5	30.1	30.6	29.5	30.1	29.9	30.6	31.0
12H	29.1	29.7	29.6	30.1	30.6	29.7	30.2	30.1	30.7	31.2
12H 4H	28.4	29.2	28.9	29.6	30.0	28.5	29.3	28.9	29.7	30.1
6H	29.0	29.7	29.5	30.1	30.6	29.3	29.9	29.7	30.3	30.8
8H	29.1	29.7	29.6	30.1	30.6	29.5	30.1	30.0	30.6	31.0
Variations with the observer position at spacings(CIE Pub.117):										
S = 1.0H	+ 0.1 / - 0.2					+ 0.1 / - 0.2				
1.5H	+ 0.2 / - 0.3					+ 0.2 / - 0.3				
2.0H	+ 0.2 / - 0.4					+ 0.2 / - 0.2				

CIE Pub.117, 563.5 lm Total Lamp Luminous Flux Correct (8log(F/F0) = -2.0)
 Area: 0.0095 m2

C Range: 0 - 360DEG
 C Interval: 30.0DEG
 Test Speed: HIGH
 Temperature:25.3°C
 Operators:DAMIN
 Test Date:2026-01-31

γ Range: 0 - 90DEG
 γ Interval: 5.0DEG
 Test System:EVERFINE GO-2000B_V1 SYSTEM V2.00.488
 Humidity:65.0%
 Test Distance:6.144m [K=1.0000]
 Remarks:

UTILIZATION FACTORS TABLE

Test:U:120.18V I:0.0978A P:10.973W PF:0.9339 Freq:60.00Hz Lamp Flux:563.515x1 lm		
NAME: LS-SM-5R-11W-5CCT-BL	TYPE:	WEIGHT:
SPEC.:	DIM.:	SERIAL No.: 1#27K
MFR.: EVERFINE	SUR.: 0.11	Shielding Angle:

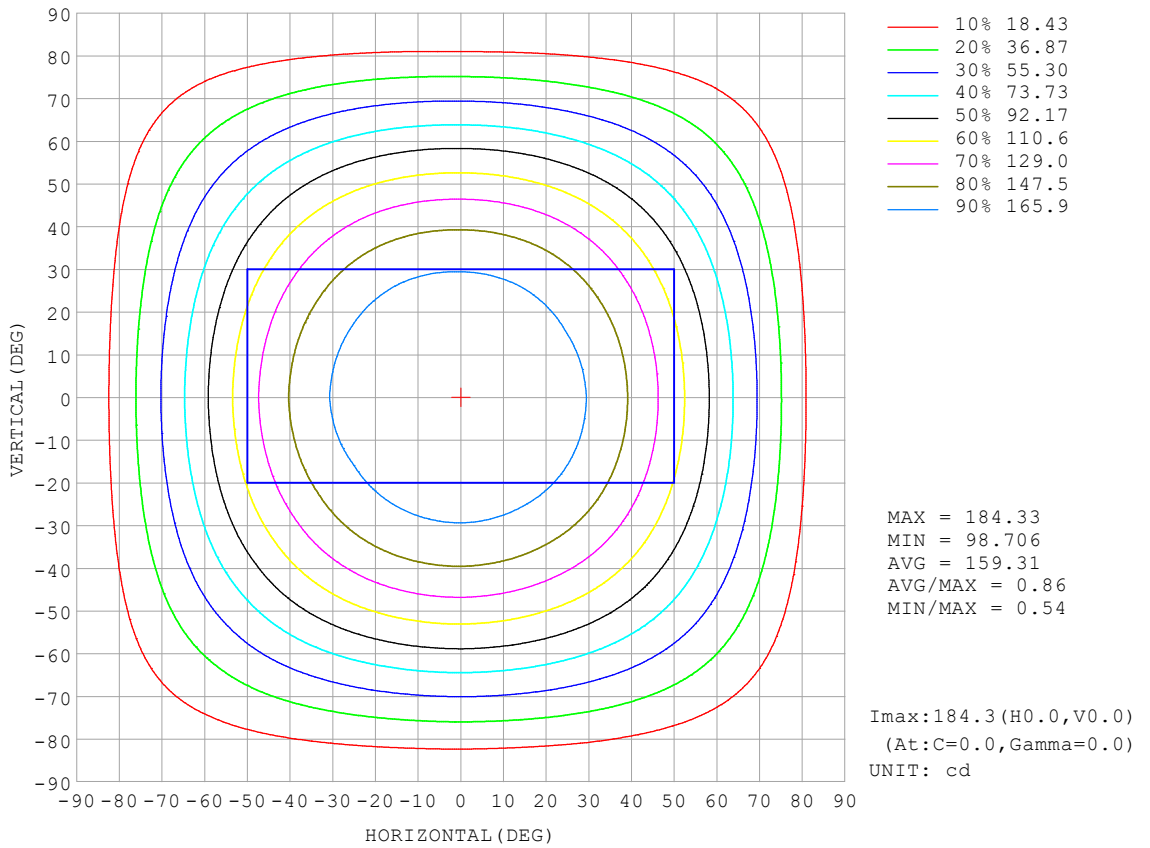
REFLECTANCE										
Ceiling	0.8	0.8	0.8	0.7	0.7	0.7	0.5	0.5	0.5	0
Walls	0.7	0.5	0.3	0.7	0.5	0.3	0.7	0.5	0.3	0
Working plane	0.2	0.2	0.2	0.2	0.2	0.2	0.2	0.2	0.2	0
ROOM INDEX	UTILIZATION FACTORS (PERCENT) $k(RI) \times RCR = 5$									
k = 0.60	57	45	38	56	45	38	55	44	38	31
0.80	67	55	48	66	55	48	64	54	47	40
1.00	75	64	57	74	64	57	72	65	56	49
1.25	83	72	65	81	71	64	78	70	64	56
1.50	88	78	71	86	77	70	83	75	69	61
2.00	95	86	79	93	85	79	89	83	77	69
2.50	99	91	85	97	89	84	93	87	82	73
3.00	102	95	89	100	93	88	96	91	86	78
4.00	106	100	96	104	98	94	99	95	91	83
5.00	108	104	99	106	102	98	102	98	95	86
ROOM INDEX	UF(total)									Direct
According to DIN EN 13032-2 2004			Suspended				SHRNOM = 1.25			

C Range: 0 - 360DEG
 C Interval: 30.0DEG
 Test Speed: HIGH
 Temperature:25.3°C
 Operators:DAMIN
 Test Date:2026-01-31

γ Range: 0 - 90DEG
 γ Interval: 5.0DEG
 Test System:EVERFINE GO-2000B_V1 SYSTEM V2.00.488
 Humidity:65.0%
 Test Distance:6.144m [K=1.0000]
 Remarks:

ISOCANDELA DIAGRAM

Test:U:120.18V I:0.0978A P:10.973W PF:0.9339 Freq:60.00Hz Lamp Flux:563.515x1 lm		
NAME: LS-SM-5R-11W-5CCT-BL	TYPE:	WEIGHT:
SPEC.:	DIM.:	SERIAL No.: 1#27K
MFR.: EVERFINE	SUR.: 0.11	Shielding Angle:

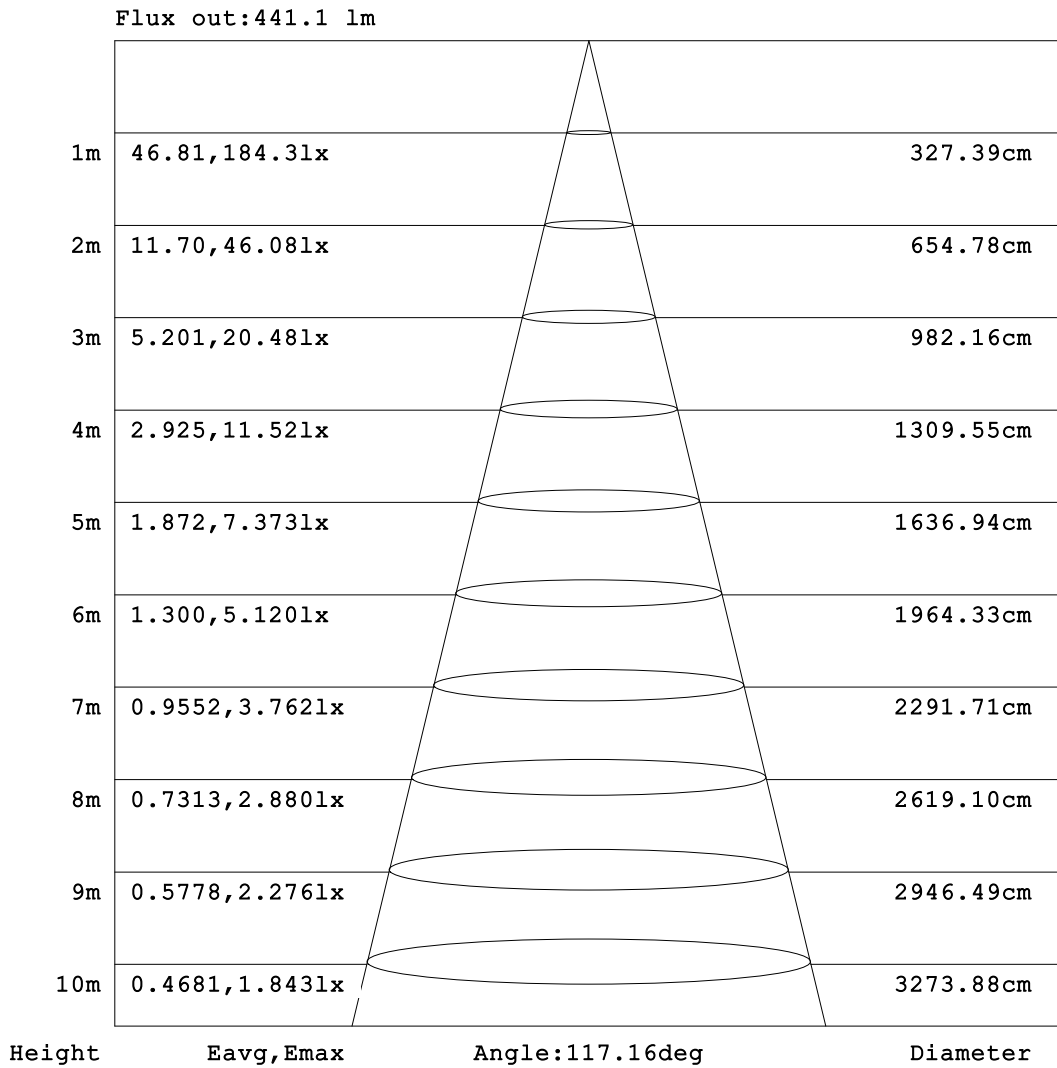


C Range: 0 - 360DEG
 C Interval: 30.0DEG
 Test Speed: HIGH
 Temperature:25.3°C
 Operators:DAMIN
 Test Date:2026-01-31

γ Range: 0 - 90DEG
 γ Interval: 5.0DEG
 Test System:EVERFINE GO-2000B_V1 SYSTEM V2.00.488
 Humidity:65.0%
 Test Distance:6.144m [K=1.0000]
 Remarks:

AAI Figure

Test:U:120.18V I:0.0978A P:10.973W PF:0.9339 Freq:60.00Hz Lamp Flux:563.515x1 lm		
NAME: LS-SM-5R-11W-5CCT-BL	TYPE:	WEIGHT:
SPEC.:	DIM.:	SERIAL No.: 1#27K
MFR.: EVERFINE	SUR.: 0.11	Shielding Angle:



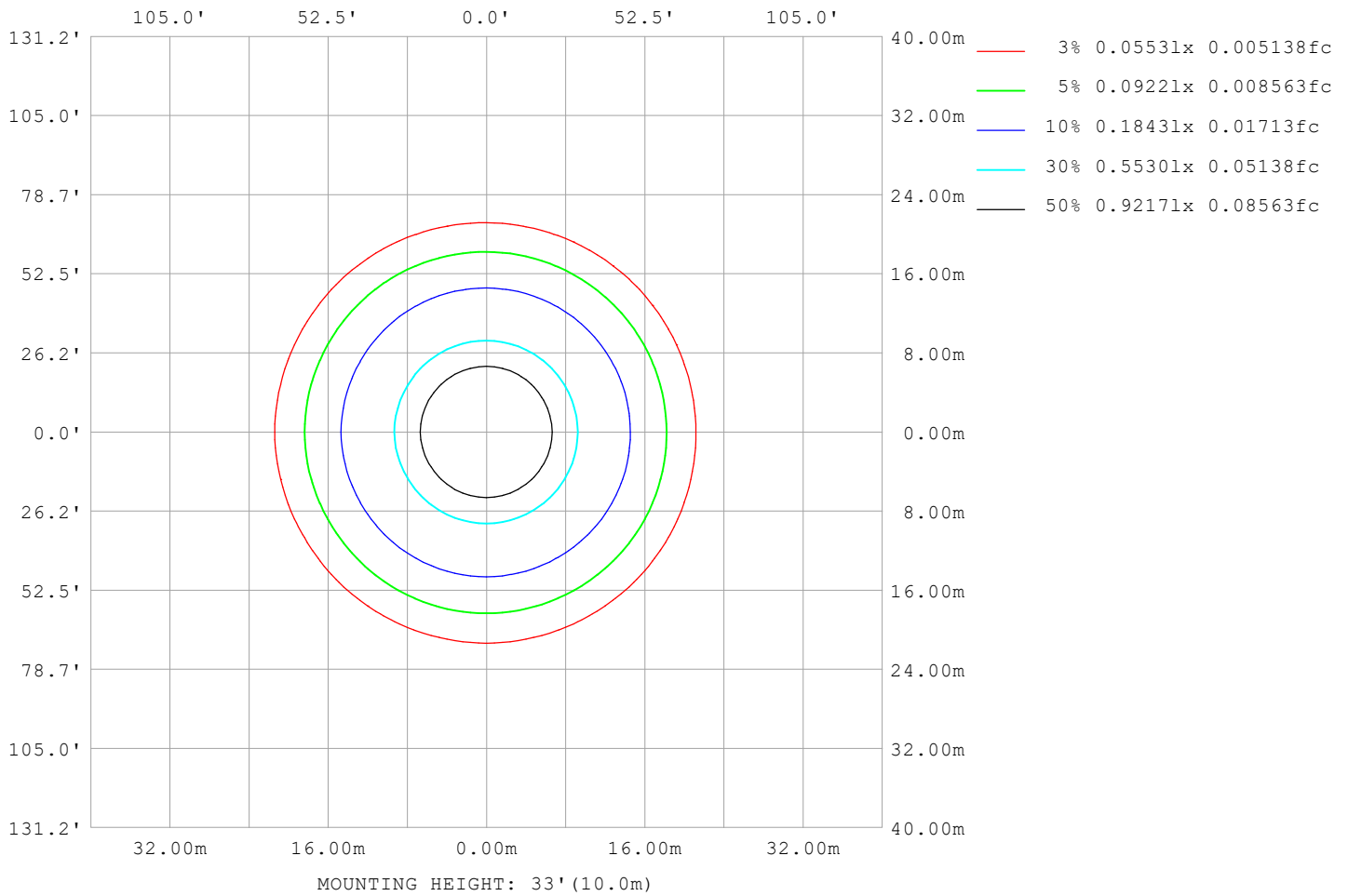
Note: The Curves indicate the illuminated area and the average illumination when the luminaire is at different distance.

C Range: 0 - 360DEG
 C Interval: 30.0DEG
 Test Speed: HIGH
 Temperature: 25.3°C
 Operators: DAMIN
 Test Date: 2026-01-31

γ Range: 0 - 90DEG
 γ Interval: 5.0DEG
 Test System: EVERFINE GO-2000B_V1 SYSTEM V2.00.488
 Humidity: 65.0%
 Test Distance: 6.144m [K=1.0000]
 Remarks:

ISOLUX DIAGRAM

Test:U:120.18V I:0.0978A P:10.973W PF:0.9339 Freq:60.00Hz Lamp Flux:563.515x1 lm		
NAME: LS-SM-5R-11W-5CCT-BL	TYPE:	WEIGHT:
SPEC.:	DIM.:	SERIAL No.: 1#27K
MFR.: EVERFINE	SUR.: 0.11	Shielding Angle:



C Range: 0 - 360DEG
 C Interval: 30.0DEG
 Test Speed: HIGH
 Temperature:25.3°C
 Operators:DAMIN
 Test Date:2026-01-31

γ Range: 0 - 90DEG
 γ Interval: 5.0DEG
 Test System:EVERFINE GO-2000B_V1 SYSTEM V2.00.488
 Humidity:65.0%
 Test Distance:6.144m [K=1.0000]
 Remarks:

LED Avg.L Report

Test:U:120.18V I:0.0978A P:10.973W PF:0.9339 Freq:60.00Hz Lamp Flux:563.515x1 lm		
NAME: LS-SM-5R-11W-5CCT-BL	TYPE:	WEIGHT:
SPEC.:	DIM.:	SERIAL No.: 1#27K
MFR.: EVERFINE	SUR.: 0.11	Shielding Angle:

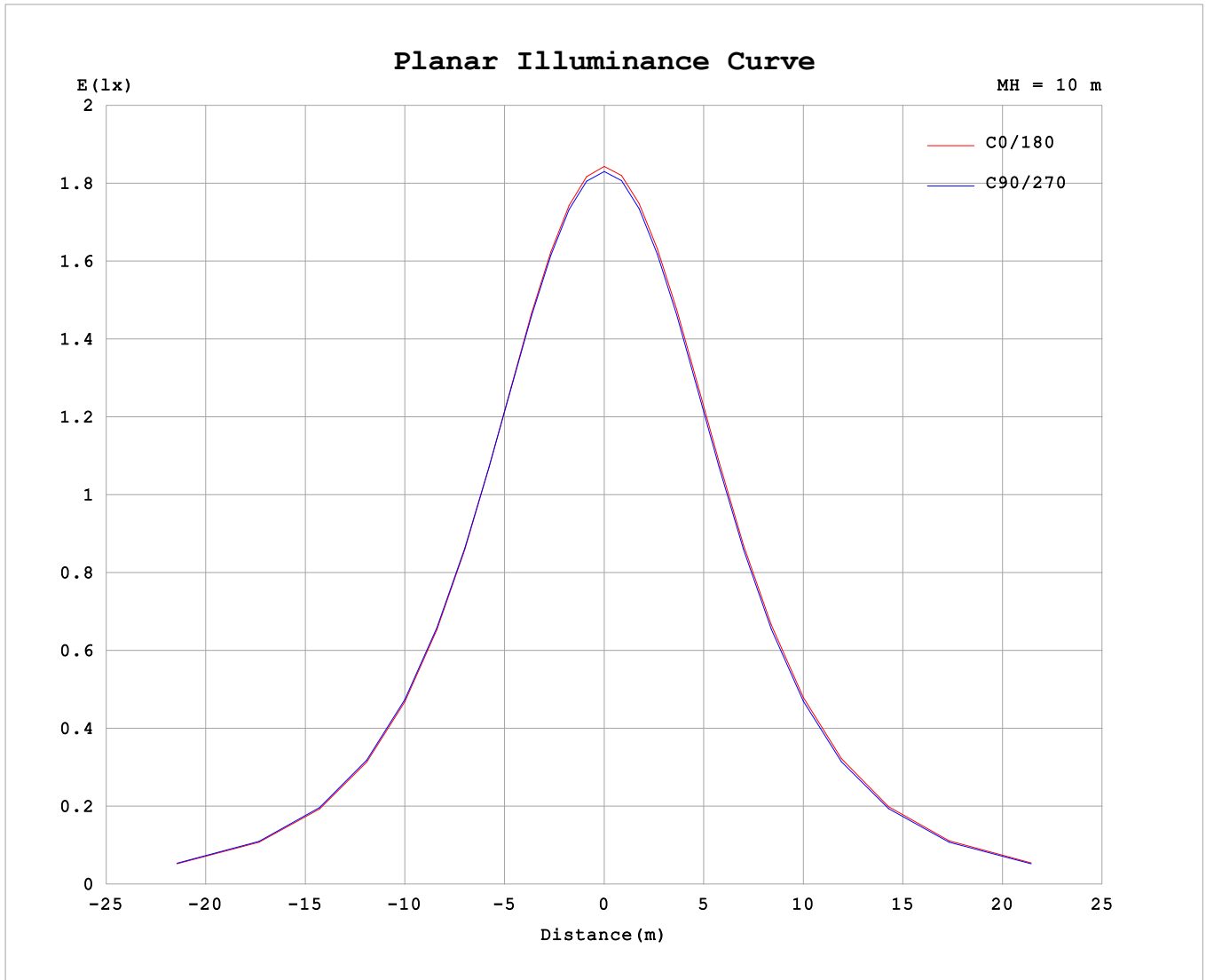
AvgL	cd/m2
L_0~180 (65) av	17651
L_0~180 (75) av	15679
L_0~180 (85) av	10029
L_90~270 (65) av	17672
L_90~270 (75) av	15692
L_90~270 (85) av	10567
L_45 (65) av	17661
L_45 (75) av	15708
L_45 (85) av	10710

Standard: GB/T 29293-2012

C Range: 0 - 360DEG
 C Interval: 30.0DEG
 Test Speed: HIGH
 Temperature:25.3°C
 Operators:DAMIN
 Test Date:2026-01-31

γ Range: 0 - 90DEG
 γ Interval: 5.0DEG
 Test System:EVERFINE GO-2000B_V1 SYSTEM V2.00.488
 Humidity:65.0%
 Test Distance:6.144m [K=1.0000]
 Remarks:

Planar Illuminance Curve



C Range: 0 - 360DEG
 C Interval: 30.0DEG
 Test Speed: HIGH
 Temperature: 25.3°C
 Operators: DAMIN
 Test Date: 2026-01-31

γ Range: 0 - 90DEG
 γ Interval: 5.0DEG
 Test System: EVERFINE GO-2000B_V1 SYSTEM V2.00.488
 Humidity: 65.0%
 Test Distance: 6.144m [K=1.0000]
 Remarks:

