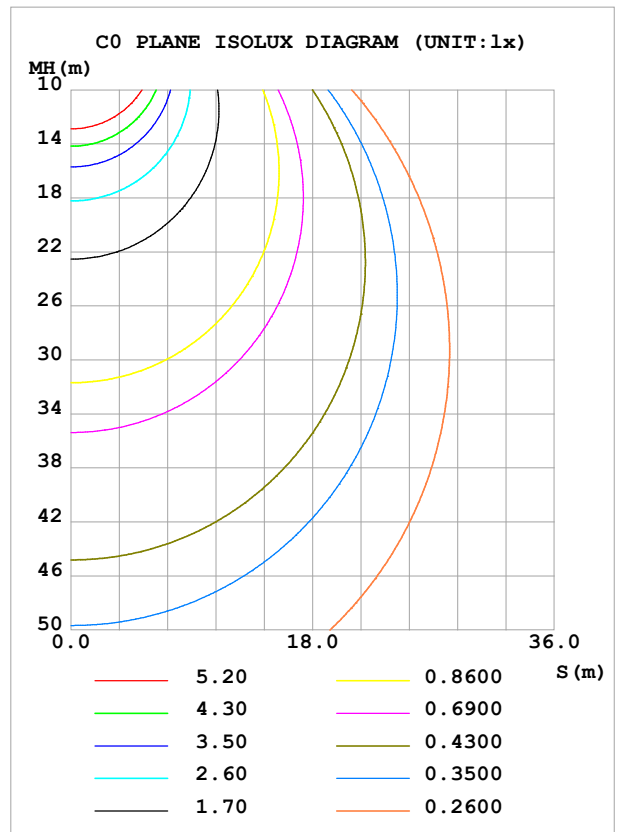
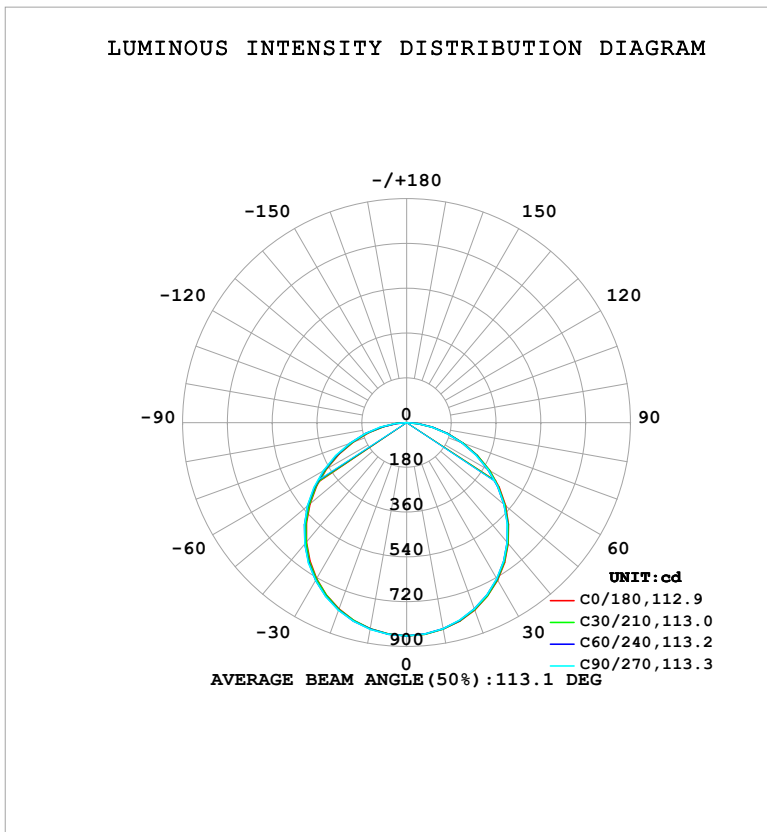


LUMINAIRE PHOTOMETRIC TEST REPORT

Test:U:121.23V I:0.2706A P:30.221W PF:0.9212 Freq:50.00Hz Lamp Flux:2475.48x1 lm		
NAME: LS-SM-16R-30W-5CCT-WH	TYPE:	WEIGHT:
SPEC.:	DIM.:	SERIAL No.: 1#27K
MFR.: EVERFINE	SUR.: 0.375	Shielding Angle:

DATA OF LAMP		PHOTOMETRIC DATA			
MODELS-SM-16R-30W-5CCT-WH-27K		Imax (cd)	856.6	S/MH (C0/180)	1.26
NOMINAL POWER (W)	30	LOR (%)	100.0	S/MH (C90/270)	1.27
RATED VOLTAGE (V)	120	TOTAL FLUX (lm)	2475.5	η UP, DN (C0-180)	0.0,49.8
NOMINAL FLUX (lm)	2475.48	CIE CLASS	DIRECT	η UP, DN (C180-360)	0.0,50.2
LAMPS INSIDE	1	η up (%)	0.0	CIBSE SHR NOM	1.25
TEST VOLTAGE (V)	120	η down (%)	100.0	CIBSE SHR MAX	1.35



C Range: 0 - 360DEG
C Interval: 30.0DEG
Test Speed: HIGH
Temperature: 25.3°C
Operators: DAMIN
Test Date: 2026-02-03

γ Range: 0 - 90DEG
 γ Interval: 5.0DEG
Test System: EVERFINE GO-2000B_V1 SYSTEM V2.00.488
Humidity: 65.0%
Test Distance: 6.144m [K=1.0000]
Remarks:

ZONAL FLUX DIAGRAM

ZONAL FLUX DIAGRAM:

γ	C0	C45	C90	C135	C180	C225	C270	C315	γ	Φ zone	Φ total	%lum,lamp
10	843.3	841.7	840.9	840.0	841.2	842.6	843.7	844.3	0- 10	81.08	81.08	3.28,3.28
20	800.9	798.3	796.8	794.9	796.8	799.9	802.1	803.1	10- 20	232.6	313.7	12.7,12.7
30	731.1	727.5	725.0	722.0	724.7	729.5	732.8	734.2	20- 30	353.5	667.2	27,27
40	635.7	631.2	628.5	624.1	627.0	633.2	637.8	639.5	30- 40	427.3	1095	44.2,44.2
50	518.8	514.1	510.9	505.2	508.4	515.3	521.0	522.3	40- 50	443.9	1538	62.1,62.1
60	385.3	380.8	377.6	370.4	372.3	380.2	387.0	387.3	50- 60	401.0	1939	78.3,78.3
70	241.9	239.5	237.1	227.9	227.5	236.8	244.6	243.0	60- 70	305.7	2245	90.7,90.7
80	104.9	104.9	103.7	95.08	92.94	101.4	108.5	106.2	70- 80	178.0	2423	97.9,97.9
90	2.859	1.904	1.721	1.686	1.799	1.793	1.976	3.387	80- 90	52.35	2475	100,100
100									90-100			
110									100-110			
120									110-120			
130									120-130			
140									130-140			
150									140-150			
160									150-160			
170									160-170			
180									170-180			
DEG	LUMINOUS INTENSITY:cd									UNIT:lm		

Conical surface Flux(90deg): 1318.2 lm

%lum = 53.2%

%lamp = 53.2%

Conical surface Flux(130deg): 2106.9 lm

%lum = 85.1%

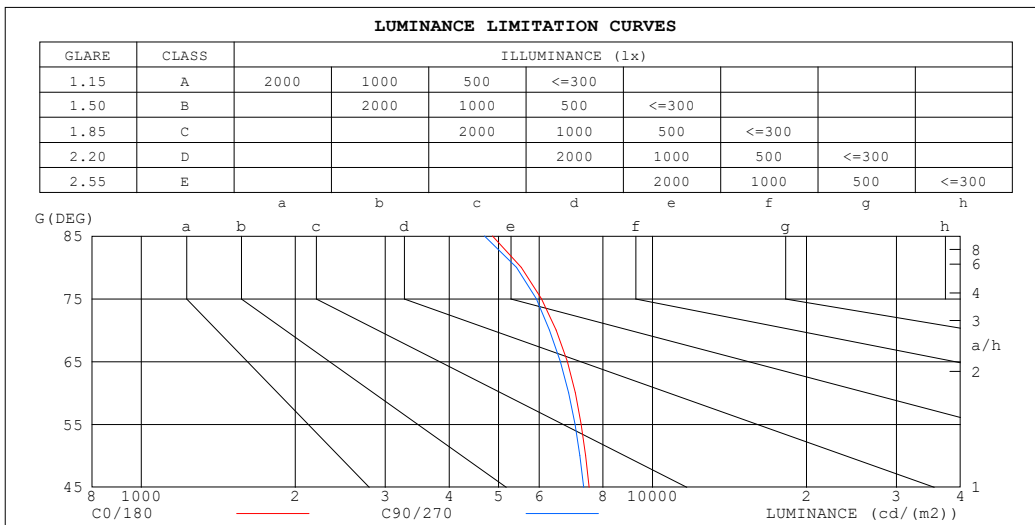
%lamp = 85.1%

C Range: 0 - 360DEG
 C Interval: 30.0DEG
 Test Speed: HIGH
 Temperature:25.3°C
 Operators:DAMIN
 Test Date:2026-02-03

γ Range: 0 - 90DEG
 γ Interval: 5.0DEG
 Test System:EVERFINE GO-2000B_V1 SYSTEM V2.00.488
 Humidity:65.0%
 Test Distance:6.144m [K=1.0000]
 Remarks:

LUMINANCE LIMITATION CURVES

Test:U:121.23V I:0.2706A P:30.221W PF:0.9212 Freq:50.00Hz Lamp Flux:2475.48x1 lm		
NAME: LS-SM-16R-30W-5CCT-WH	TYPE:	WEIGHT:
SPEC.:	DIM.:	SERIAL No.: 1#27K
MFR.: EVERFINE	SUR.: 0.375	Shielding Angle:



LUMINANCE cd/(m2)		
G (DEG)	C0/180	C90/270
85	4860	4688
80	5533	5418
75	6063	5921
70	6481	6288
65	6813	6598
60	7061	6851
55	7249	7050
50	7396	7210
45	7513	7338

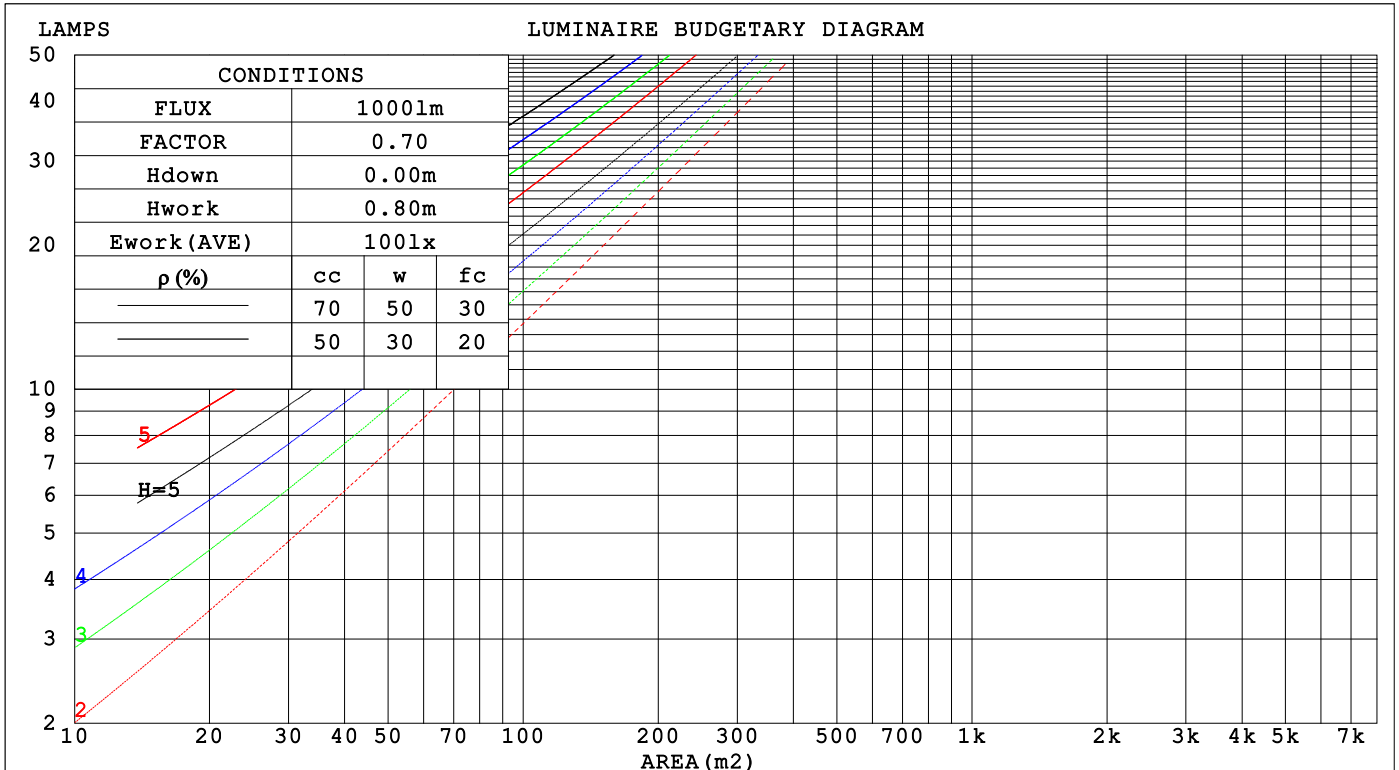
C Range: 0 - 360DEG
 C Interval: 30.0DEG
 Test Speed: HIGH
 Temperature:25.3°C
 Operators:DAMIN
 Test Date:2026-02-03

γ Range: 0 - 90DEG
 γ Interval: 5.0DEG
 Test System:EVERFINE GO-2000B_V1 SYSTEM V2.00.488
 Humidity:65.0%
 Test Distance:6.144m [K=1.0000]
 Remarks:

CU AND LUMINAIRE BUDGETARY ESTIMATE DIAGRAM

Test:U:121.23V I:0.2706A P:30.221W PF:0.9212 Freq:50.00Hz Lamp Flux:2475.48x1 lm		
NAME: LS-SM-16R-30W-5CCT-WH	TYPE:	WEIGHT:
SPEC.:	DIM.:	SERIAL No.: 1#27K
MFR.: EVERFINE	SUR.: 0.375	Shielding Angle:

ρcc	80%			70%			50%			30%			10%			0
ρw	50%	30%	10%	50%	30%	10%	50%	30%	10%	50%	30%	10%	50%	30%	10%	0
ρfc	20%			20%			20%			20%			20%			0
RCR	RCR:Room Cavity Ratio Coefficients of Utilization(CU)															
0.0	1.19	1.19	1.19	1.16	1.16	1.16	1.11	1.11	1.11	1.06	1.06	1.06	1.02	1.02	1.02	1.00
1.0	1.04	.99	.95	1.01	.97	.94	.97	.94	.91	.93	.91	.88	.90	.87	.85	.83
2.0	.90	.83	.77	.88	.82	.77	.85	.79	.75	.81	.77	.73	.78	.75	.71	.69
3.0	.79	.71	.64	.78	.70	.64	.75	.68	.63	.72	.66	.61	.69	.64	.60	.58
4.0	.70	.61	.54	.69	.60	.54	.66	.59	.53	.64	.58	.52	.62	.56	.52	.50
5.0	.62	.53	.47	.61	.53	.46	.59	.52	.46	.57	.51	.45	.55	.50	.45	.43
6.0	.56	.47	.41	.55	.47	.41	.53	.46	.40	.52	.45	.40	.50	.44	.39	.37
7.0	.51	.42	.36	.50	.42	.36	.49	.41	.35	.47	.40	.35	.46	.40	.35	.33
8.0	.46	.38	.32	.46	.38	.32	.44	.37	.32	.43	.36	.31	.42	.36	.31	.29
9.0	.43	.34	.29	.42	.34	.29	.41	.34	.29	.40	.33	.28	.39	.33	.28	.26
10.0	.39	.31	.26	.39	.31	.26	.38	.31	.26	.37	.30	.26	.36	.30	.26	.24



C Range: 0 - 360DEG
 C Interval: 30.0DEG
 Test Speed: HIGH
 Temperature:25.3°C
 Operators:DAMIN
 Test Date:2026-02-03

γ Range: 0 - 90DEG
 γ Interval: 5.0DEG
 Test System:EVERFINE GO-2000B_V1 SYSTEM V2.00.488
 Humidity:65.0%
 Test Distance:6.144m [K=1.0000]
 Remarks:

WEC AND CCEC

Test:U:121.23V I:0.2706A P:30.221W PF:0.9212 Freq:50.00Hz Lamp Flux:2475.48x1 lm		
NAME: LS-SM-16R-30W-5CCT-WH	TYPE:	WEIGHT:
SPEC.:	DIM.:	SERIAL No.: 1#27K
MFR.: EVERFINE	SUR.: 0.375	Shielding Angle:

ρ_{CC}	80%			70%			50%			30%			10%			0
ρ_w	50%	30%	10%	50%	30%	10%	50%	30%	10%	50%	30%	10%	50%	30%	10%	0
ρ_{fc}	20%			20%			20%			20%			20%			0
RCR	RCR:Room Cavity Ratio						Wall Exitance Coefficients(WEC)									
0.0																
1.0	.313	.178	.056	.306	.175	.055	.293	.168	.054	.281	.162	.052	.270	.156	.050	
2.0	.294	.161	.049	.288	.158	.049	.276	.153	.048	.265	.149	.047	.255	.144	.046	
3.0	.272	.145	.043	.266	.143	.043	.256	.139	.042	.246	.135	.041	.237	.131	.041	
4.0	.250	.130	.038	.246	.128	.038	.236	.125	.037	.228	.122	.037	.220	.119	.036	
5.0	.231	.118	.034	.227	.117	.034	.219	.114	.034	.211	.111	.033	.204	.109	.033	
6.0	.214	.107	.031	.211	.106	.031	.203	.104	.030	.197	.102	.030	.190	.100	.030	
7.0	.199	.099	.028	.196	.098	.028	.190	.096	.028	.183	.094	.027	.178	.092	.027	
8.0	.186	.091	.026	.183	.090	.025	.177	.089	.025	.172	.087	.025	.167	.086	.025	
9.0	.174	.084	.024	.172	.084	.023	.167	.082	.023	.162	.081	.023	.157	.080	.023	
10.0	.164	.079	.022	.162	.078	.022	.157	.077	.022	.152	.076	.022	.148	.075	.021	

ρ_{CC}	80%			70%			50%			30%			10%			0
ρ_w	50%	30%	10%	50%	30%	10%	50%	30%	10%	50%	30%	10%	50%	30%	10%	0
ρ_{fc}	20%			20%			20%			20%			20%			0
RCR	RCR:Room Cavity Ratio						Ceiling Cavity Exitance Coefficients(CCEC)									
0.0	.190	.190	.190	.163	.163	.163	.111	.111	.111	.064	.064	.064	.020	.020	.020	
1.0	.181	.156	.134	.154	.134	.115	.106	.092	.080	.061	.053	.046	.019	.017	.015	
2.0	.173	.132	.098	.148	.114	.084	.101	.079	.059	.058	.046	.035	.019	.015	.011	
3.0	.165	.114	.074	.141	.099	.064	.097	.069	.045	.056	.040	.027	.018	.013	.009	
4.0	.157	.101	.058	.135	.087	.050	.093	.061	.036	.054	.036	.021	.017	.012	.007	
5.0	.150	.091	.047	.129	.078	.041	.089	.055	.029	.051	.032	.017	.017	.010	.006	
6.0	.143	.082	.039	.122	.071	.034	.085	.050	.024	.049	.029	.014	.016	.010	.005	
7.0	.136	.075	.033	.117	.065	.029	.081	.046	.020	.047	.027	.012	.015	.009	.004	
8.0	.129	.070	.029	.111	.060	.025	.077	.042	.018	.045	.025	.011	.014	.008	.003	
9.0	.123	.065	.025	.106	.056	.022	.073	.039	.016	.043	.023	.009	.014	.008	.003	
10.0	.117	.060	.022	.101	.052	.020	.070	.037	.014	.041	.022	.008	.013	.007	.003	

C Range: 0 - 360DEG
 C Interval: 30.0DEG
 Test Speed: HIGH
 Temperature:25.3°C
 Operators:DAMIN
 Test Date:2026-02-03

γ Range: 0 - 90DEG
 γ Interval: 5.0DEG
 Test System:EVERFINE GO-2000B_V1 SYSTEM V2.00.488
 Humidity:65.0%
 Test Distance:6.144m [K=1.0000]
 Remarks:

UGR(Unified Glare Rating) Table

Test:U:121.23V I:0.2706A P:30.221W PF:0.9212 Freq:50.00Hz										
Lamp Flux:2475.48x1 lm										
NAME: LS-SM-16R-30W-5CCT-WH					TYPE:			WEIGHT:		
SPEC.:					DIM.:			SERIAL No.: 1#27K		
MFR.: EVERFINE					SUR.: 0.375			Shielding Angle:		
ceiling/cavity	0.7	0.7	0.5	0.5	0.3	0.7	0.7	0.5	0.5	0.3
walls	0.5	0.3	0.5	0.3	0.3	0.5	0.3	0.5	0.3	0.3
working plane	0.2	0.2	0.2	0.2	0.2	0.2	0.2	0.2	0.2	0.2
Room dimensions	Viewed crosswise					Viewed endwise				
x = 2H y = 2H	16.6	18.2	16.9	18.4	18.6	16.5	18.0	16.8	18.2	18.4
3H	18.2	19.6	18.5	19.8	20.0	18.0	19.4	18.3	19.7	19.9
4H	18.8	20.1	19.1	20.4	20.6	18.6	20.0	18.9	20.2	20.5
6H	19.2	20.5	19.5	20.7	21.0	19.1	20.3	19.4	20.6	20.9
8H	19.3	20.5	19.7	20.8	21.1	19.2	20.4	19.5	20.7	21.0
12H	19.4	20.6	19.7	20.9	21.2	19.2	20.4	19.6	20.7	21.0
4H 2H	17.2	18.6	17.5	18.8	19.1	17.1	18.5	17.4	18.7	19.0
3H	18.9	20.1	19.3	20.4	20.7	18.8	20.0	19.2	20.3	20.6
4H	19.7	20.8	20.1	21.1	21.4	19.6	20.6	19.9	21.0	21.3
6H	20.2	21.2	20.6	21.5	21.9	20.1	21.1	20.5	21.4	21.8
8H	20.4	21.3	20.8	21.7	22.0	20.3	21.2	20.7	21.5	21.9
12H	20.5	21.3	20.9	21.7	22.1	20.4	21.2	20.8	21.6	22.0
8H 4H	19.9	20.8	20.4	21.2	21.6	19.8	20.7	20.2	21.1	21.5
6H	20.6	21.4	21.1	21.8	22.2	20.5	21.3	21.0	21.7	22.1
8H	20.9	21.5	21.3	22.0	22.4	20.8	21.4	21.2	21.9	22.3
12H	21.1	21.6	21.6	22.1	22.6	21.0	21.5	21.4	22.0	22.4
12H 4H	20.0	20.8	20.4	21.2	21.6	19.8	20.7	20.3	21.1	21.5
6H	20.7	21.3	21.1	21.8	22.2	20.6	21.2	21.0	21.7	22.1
8H	21.0	21.5	21.5	22.0	22.5	20.9	21.4	21.3	21.9	22.4
Variations with the observer position at spacings(CIE Pub.117):										
S = 1.0H	+ 0.1 / - 0.2					+ 0.1 / - 0.2				
1.5H	+ 0.2 / - 0.3					+ 0.2 / - 0.3				
2.0H	+ 0.2 / - 0.3					+ 0.2 / - 0.3				

CIE Pub.117, 2475 lm Total Lamp Luminous Flux Correct (8log(F/F0) = 3.1)
 Area: 0.11 m2

C Range: 0 - 360DEG
 C Interval: 30.0DEG
 Test Speed: HIGH
 Temperature:25.3°C
 Operators:DAMIN
 Test Date:2026-02-03

γ Range: 0 - 90DEG
 γ Interval: 5.0DEG
 Test System:EVERFINE GO-2000B_V1 SYSTEM V2.00.488
 Humidity:65.0%
 Test Distance:6.144m [K=1.0000]
 Remarks:

UTILIZATION FACTORS TABLE

Test:U:121.23V I:0.2706A P:30.221W PF:0.9212 Freq:50.00Hz Lamp Flux:2475.48x1 lm		
NAME: LS-SM-16R-30W-5CCT-WH	TYPE:	WEIGHT:
SPEC.:	DIM.:	SERIAL No.: 1#27K
MFR.: EVERFINE	SUR.: 0.375	Shielding Angle:

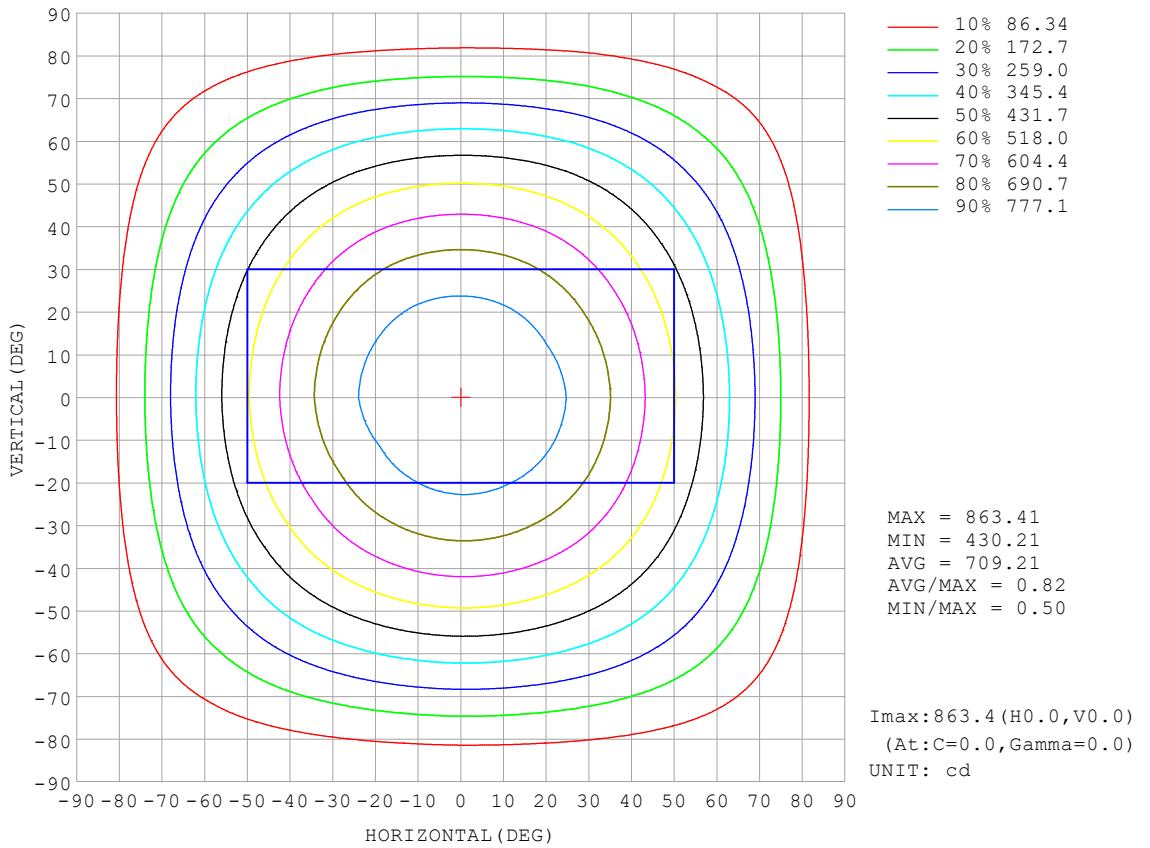
REFLECTANCE										
Ceiling	0.8	0.8	0.8	0.7	0.7	0.7	0.5	0.5	0.5	0
Walls	0.7	0.5	0.3	0.7	0.5	0.3	0.7	0.5	0.3	0
Working plane	0.2	0.2	0.2	0.2	0.2	0.2	0.2	0.2	0.2	0
ROOM INDEX	UTILIZATION FACTORS (PERCENT) $k(RI) \times RCR = 5$									
k = 0.60	57	46	39	57	45	39	55	45	38	32
0.80	67	56	48	66	55	48	64	54	48	41
1.00	76	65	57	75	64	57	72	65	56	49
1.25	83	72	65	81	72	65	79	70	64	57
1.50	88	78	71	86	77	70	83	75	69	62
2.00	95	86	80	93	85	79	89	83	77	69
2.50	99	91	85	97	89	84	93	87	82	74
3.00	102	95	90	100	94	88	96	91	86	78
4.00	106	100	96	104	99	94	99	95	92	83
5.00	109	104	100	106	102	98	102	98	95	86
ROOM INDEX	UF(total)									Direct
According to DIN EN 13032-2 2004			Suspended				SHRNOM = 1.25			

C Range: 0 - 360DEG
 C Interval: 30.0DEG
 Test Speed: HIGH
 Temperature:25.3°C
 Operators:DAMIN
 Test Date:2026-02-03

γ Range: 0 - 90DEG
 γ Interval: 5.0DEG
 Test System:EVERFINE GO-2000B_V1 SYSTEM V2.00.488
 Humidity:65.0%
 Test Distance:6.144m [K=1.0000]
 Remarks:

ISOCANDELA DIAGRAM

Test:U:121.23V I:0.2706A P:30.221W PF:0.9212 Freq:50.00Hz Lamp Flux:2475.48x1 lm		
NAME: LS-SM-16R-30W-5CCT-WH	TYPE:	WEIGHT:
SPEC.:	DIM.:	SERIAL No.: 1#27K
MFR.: EVERFINE	SUR.: 0.375	Shielding Angle:

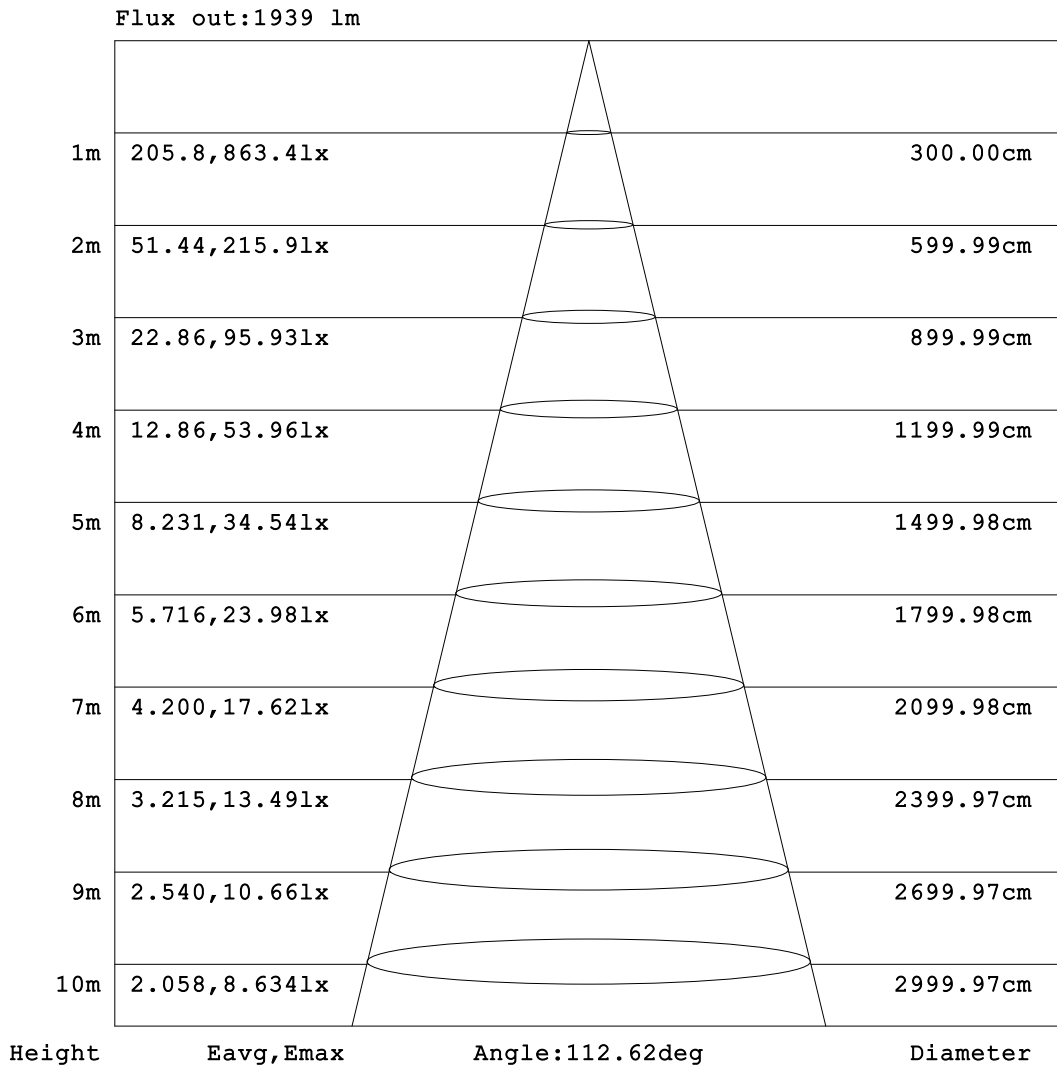


C Range: 0 - 360DEG
 C Interval: 30.0DEG
 Test Speed: HIGH
 Temperature:25.3°C
 Operators:DAMIN
 Test Date:2026-02-03

γ Range: 0 - 90DEG
 γ Interval: 5.0DEG
 Test System:EVERFINE GO-2000B_V1 SYSTEM V2.00.488
 Humidity:65.0%
 Test Distance:6.144m [K=1.0000]
 Remarks:

AAI Figure

Test:U:121.23V I:0.2706A P:30.221W PF:0.9212 Freq:50.00Hz Lamp Flux:2475.48x1 lm		
NAME: LS-SM-16R-30W-5CCT-WH	TYPE:	WEIGHT:
SPEC.:	DIM.:	SERIAL No.: 1#27K
MFR.: EVERFINE	SUR.: 0.375	Shielding Angle:



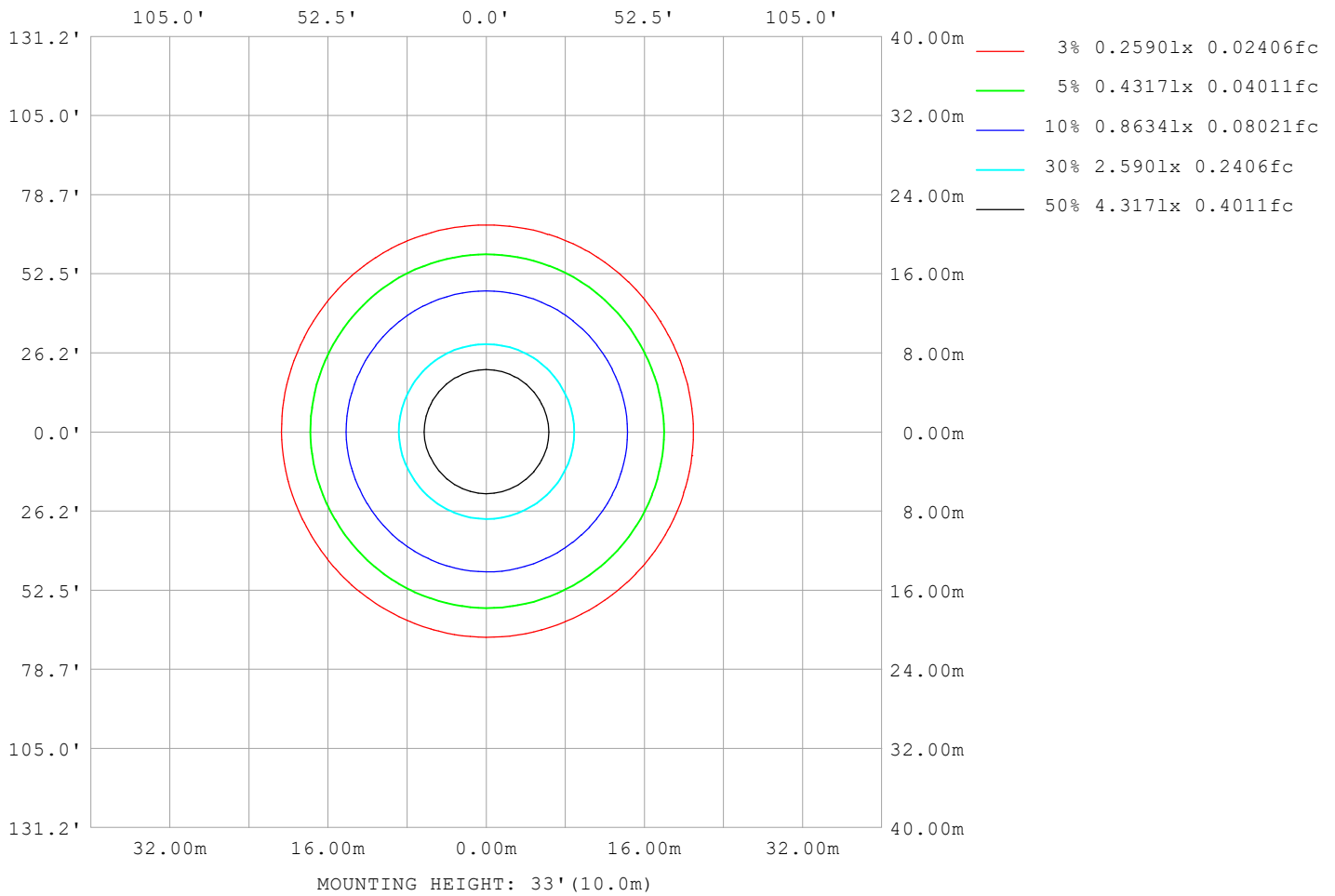
Note: The Curves indicate the illuminated area and the average illumination when the luminaire is at different distance.

C Range: 0 - 360DEG
 C Interval: 30.0DEG
 Test Speed: HIGH
 Temperature: 25.3°C
 Operators: DAMIN
 Test Date: 2026-02-03

γ Range: 0 - 90DEG
 γ Interval: 5.0DEG
 Test System: EVERFINE GO-2000B_V1 SYSTEM V2.00.488
 Humidity: 65.0%
 Test Distance: 6.144m [K=1.0000]
 Remarks:

ISOLUX DIAGRAM

Test:U:121.23V I:0.2706A P:30.221W PF:0.9212 Freq:50.00Hz Lamp Flux:2475.48x1 lm		
NAME: LS-SM-16R-30W-5CCT-WH	TYPE:	WEIGHT:
SPEC.:	DIM.:	SERIAL No.: 1#27K
MFR.: EVERFINE	SUR.: 0.375	Shielding Angle:



C Range: 0 - 360DEG
 C Interval: 30.0DEG
 Test Speed: HIGH
 Temperature:25.3°C
 Operators:DAMIN
 Test Date:2026-02-03

γ Range: 0 - 90DEG
 γ Interval: 5.0DEG
 Test System:EVERFINE GO-2000B_V1 SYSTEM V2.00.488
 Humidity:65.0%
 Test Distance:6.144m [K=1.0000]
 Remarks:

LED Avg.L Report

Test:U:121.23V I:0.2706A P:30.221W PF:0.9212 Freq:50.00Hz Lamp Flux:2475.48x1 lm		
NAME: LS-SM-16R-30W-5CCT-WH	TYPE:	WEIGHT:
SPEC.:	DIM.:	SERIAL No.: 1#27K
MFR.: EVERFINE	SUR.: 0.375	Shielding Angle:

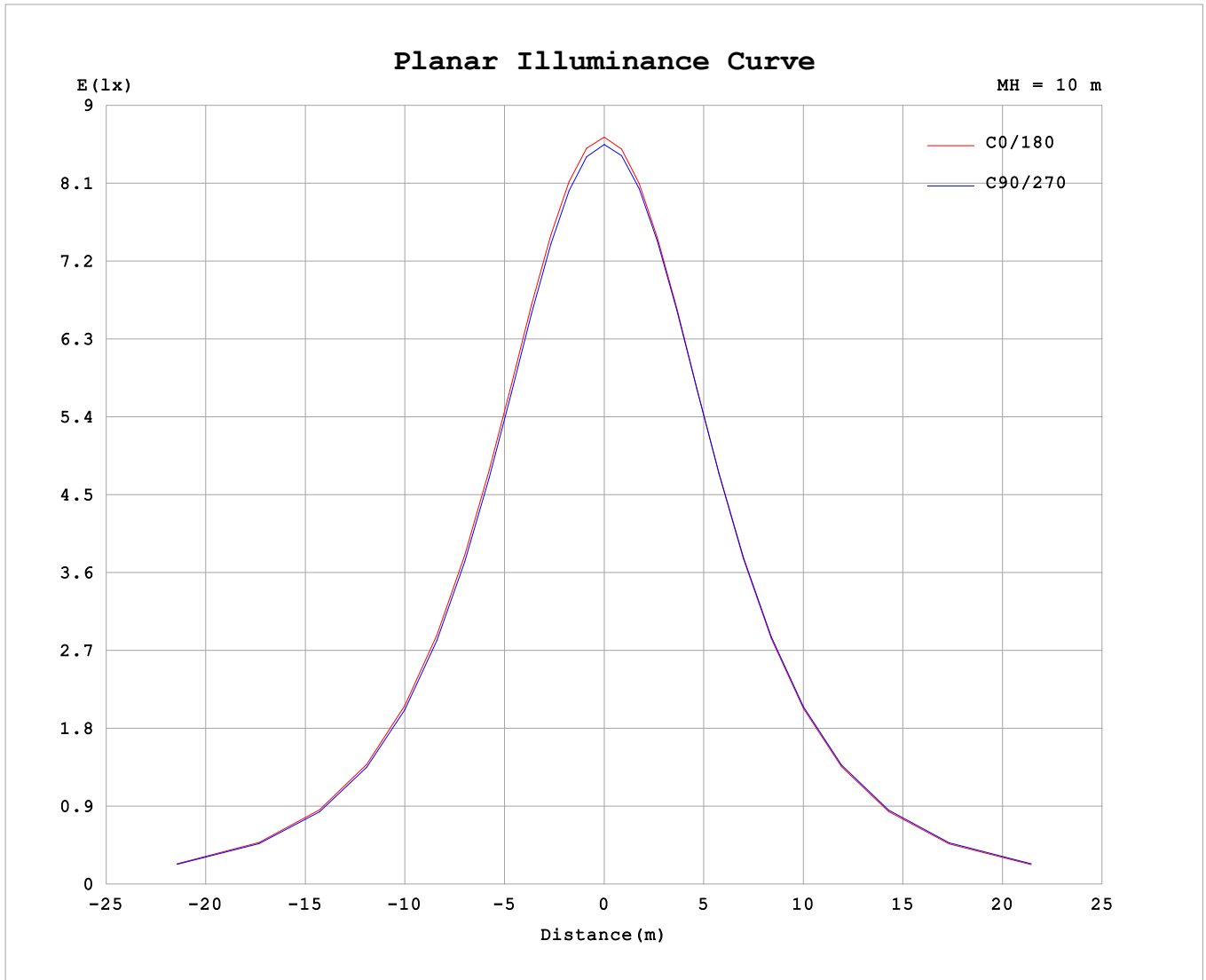
AvgL	cd/m2
L_0~180 (65) av	6612
L_0~180 (75) av	5774
L_0~180 (85) av	4348
L_90~270 (65) av	6704
L_90~270 (75) av	6038
L_90~270 (85) av	4876
L_45 (65) av	6634
L_45 (75) av	5877
L_45 (85) av	4579

Standard: GB/T 29293-2012

C Range: 0 - 360DEG
 C Interval: 30.0DEG
 Test Speed: HIGH
 Temperature:25.3°C
 Operators:DAMIN
 Test Date:2026-02-03

γ Range: 0 - 90DEG
 γ Interval: 5.0DEG
 Test System:EVERFINE GO-2000B_V1 SYSTEM V2.00.488
 Humidity:65.0%
 Test Distance:6.144m [K=1.0000]
 Remarks:

Planar Illuminance Curve



C Range: 0 - 360DEG
 C Interval: 30.0DEG
 Test Speed: HIGH
 Temperature: 25.3°C
 Operators: DAMIN
 Test Date: 2026-02-03

γ Range: 0 - 90DEG
 γ Interval: 5.0DEG
 Test System: EVERFINE GO-2000B_V1 SYSTEM V2.00.488
 Humidity: 65.0%
 Test Distance: 6.144m [K=1.0000]
 Remarks:

