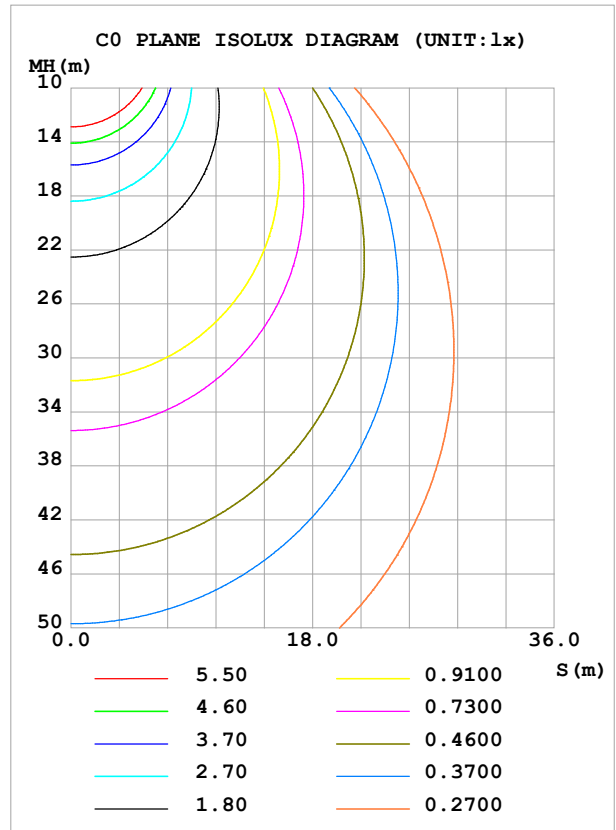
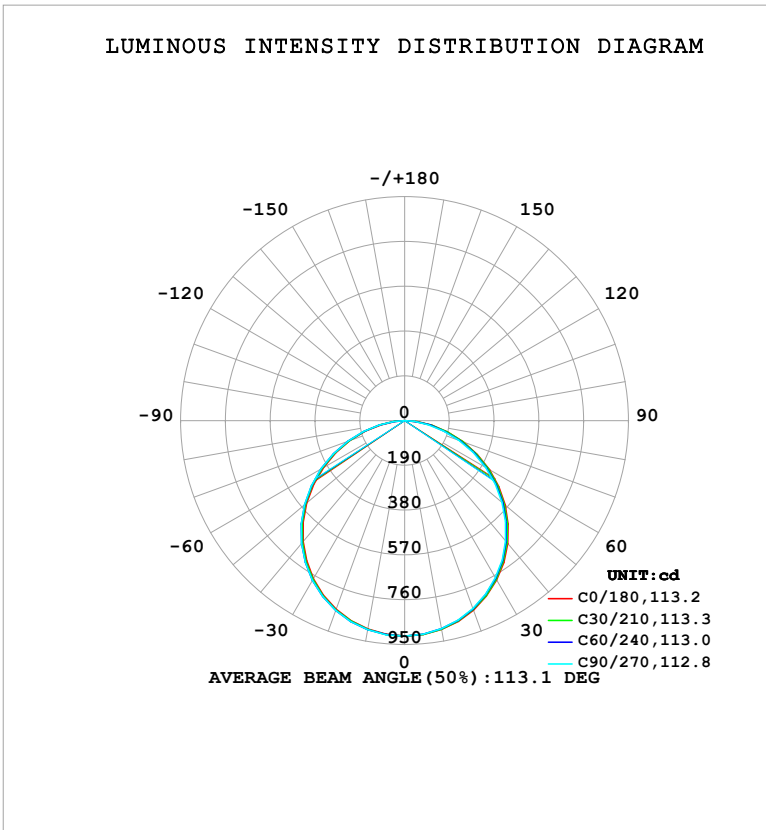


LUMINAIRE PHOTOMETRIC TEST REPORT

Test:U:121.26V I:0.2741A P:30.795W PF:0.9265 Freq:50.00Hz Lamp Flux:2639.69x1 lm		
NAME: LS-SM-16R-30W-5CCT-BL	TYPE:	WEIGHT:
SPEC.:	DIM.:	SERIAL No.: 1#35K
MFR.: EVERFINE	SUR.: 0.375	Shielding Angle:

DATA OF LAMP		PHOTOMETRIC DATA			
MODELS-SM-16R-30W-5CCT-BL-35K		Imax (cd)	914.2	S/MH (C0/180)	1.26
NOMINAL POWER (W)	30	LOR (%)	100.0	S/MH (C90/270)	1.27
RATED VOLTAGE (V)	120	TOTAL FLUX (lm)	2639.7	η UP, DN (C0-180)	0.0,49.7
NOMINAL FLUX (lm)	2639.69	CIE CLASS	DIRECT	η UP, DN (C180-360)	0.0,50.3
LAMPS INSIDE	1	η up (%)	0.0	CIBSE SHR NOM	1.25
TEST VOLTAGE (V)	120	η down (%)	100.0	CIBSE SHR MAX	1.35



C Range: 0 - 360DEG
C Interval: 30.0DEG
Test Speed: HIGH
Temperature:25.3°C
Operators:DAMIN
Test Date:2026-02-03

γ Range: 0 - 90DEG
 γ Interval: 5.0DEG
Test System:EVERFINE GO-2000B_V1 SYSTEM V2.00.488
Humidity:65.0%
Test Distance:6.144m [K=1.0000]
Remarks:

ZONAL FLUX DIAGRAM

ZONAL FLUX DIAGRAM:

γ	C0	C45	C90	C135	C180	C225	C270	C315	γ	Φ zone	Φ total	%lum, lamp
10	899.9	897.7	896.6	896.1	897.9	900.0	900.9	901.2	0- 10	86.53	86.53	3.28,3.28
20	855.2	851.1	848.3	847.3	851.1	855.2	856.9	857.8	10- 20	248.3	334.8	12.7,12.7
30	781.7	775.4	770.7	768.9	774.4	780.6	782.9	784.4	20- 30	377.3	712.1	27,27
40	680.7	673.1	666.6	663.6	670.2	677.7	681.0	683.5	30- 40	456.1	1168	44.3,44.3
50	557.0	548.3	540.2	535.9	542.9	551.5	555.6	558.9	40- 50	473.6	1642	62.2,62.2
60	416.1	406.7	396.9	391.2	397.9	406.7	411.2	415.0	50- 60	427.6	2069	78.4,78.4
70	265.0	256.5	245.1	238.6	245.6	253.5	256.6	260.7	60- 70	325.8	2395	90.7,90.7
80	120.0	113.1	102.4	96.37	101.8	108.4	110.6	113.9	70- 80	189.2	2584	97.9,97.9
90	4.038	2.016	1.768	1.795	1.955	1.935	2.130	4.591	80- 90	55.25	2640	100,100
100									90-100			
110									100-110			
120									110-120			
130									120-130			
140									130-140			
150									140-150			
160									150-160			
170									160-170			
180									170-180			
DEG	LUMINOUS INTENSITY:cd									UNIT:lm		

Conical surface Flux(90deg): 1406.8 lm

%lum = 53.3%

%lamp = 53.3%

Conical surface Flux(130deg): 2247.9 lm

%lum = 85.2%

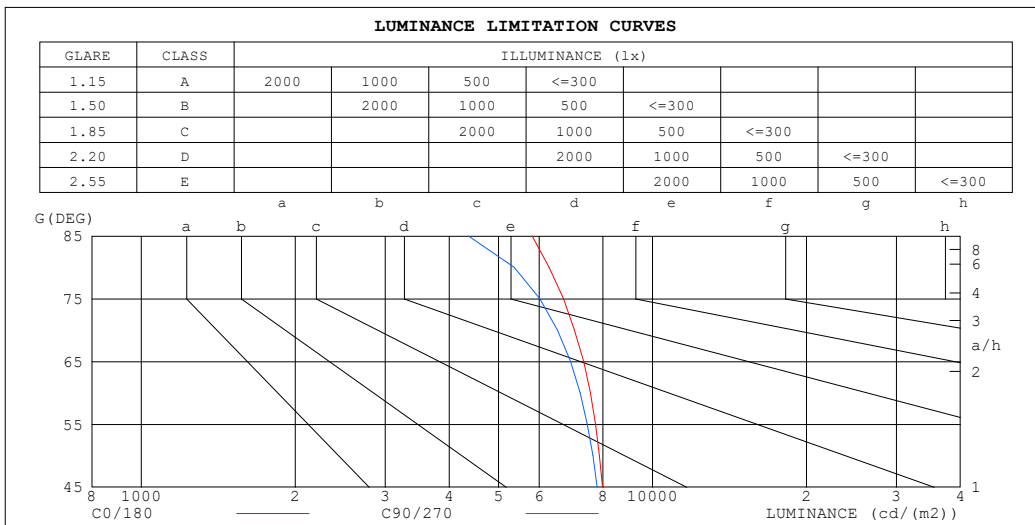
%lamp = 85.2%

C Range: 0 - 360DEG
 C Interval: 30.0DEG
 Test Speed: HIGH
 Temperature:25.3°C
 Operators:DAMIN
 Test Date:2026-02-03

γ Range: 0 - 90DEG
 γ Interval: 5.0DEG
 Test System:EVERFINE GO-2000B_V1 SYSTEM V2.00.488
 Humidity:65.0%
 Test Distance:6.144m [K=1.0000]
 Remarks:

LUMINANCE LIMITATION CURVES

Test:U:121.26V I:0.2741A P:30.795W PF:0.9265 Freq:50.00Hz Lamp Flux:2639.69x1 lm		
NAME: LS-SM-16R-30W-5CCT-BL	TYPE:	WEIGHT:
SPEC.:	DIM.:	SERIAL No.: 1#35K
MFR.: EVERFINE	SUR.: 0.375	Shielding Angle:



LUMINANCE cd/(m2)		
G (DEG)	C0/180	C90/270
85	5811	4367
80	6278	5361
75	6693	6020
70	7037	6515
65	7331	6908
60	7559	7217
55	7732	7455
50	7871	7641
45	7984	7791

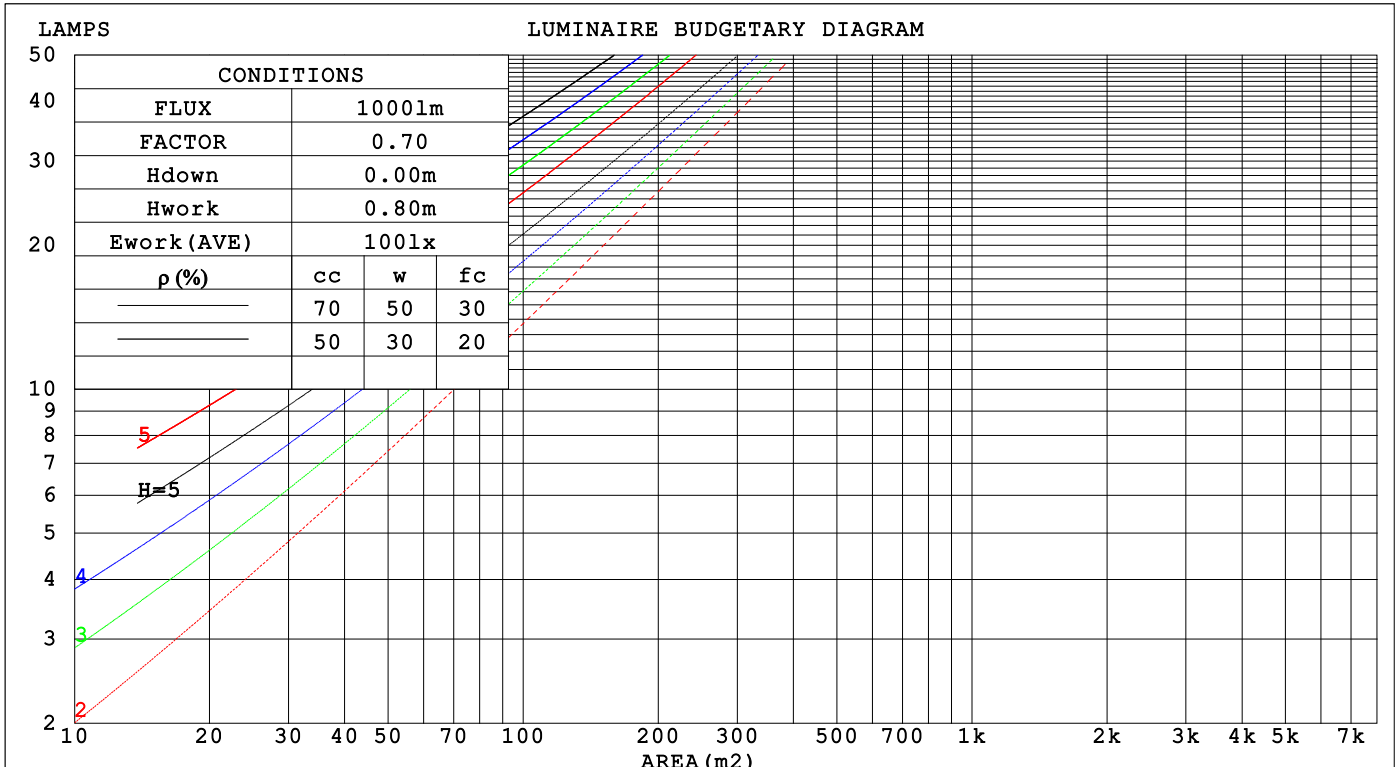
C Range: 0 - 360DEG
 C Interval: 30.0DEG
 Test Speed: HIGH
 Temperature:25.3°C
 Operators:DAMIN
 Test Date:2026-02-03

γ Range: 0 - 90DEG
 γ Interval: 5.0DEG
 Test System:EVERFINE GO-2000B_V1 SYSTEM V2.00.488
 Humidity:65.0%
 Test Distance:6.144m [K=1.0000]
 Remarks:

CU AND LUMINAIRE BUDGETARY ESTIMATE DIAGRAM

Test:U:121.26V I:0.2741A P:30.795W PF:0.9265 Freq:50.00Hz Lamp Flux:2639.69x1 lm		
NAME: LS-SM-16R-30W-5CCT-BL	TYPE:	WEIGHT:
SPEC.:	DIM.:	SERIAL No.: 1#35K
MFR.: EVERFINE	SUR.: 0.375	Shielding Angle:

ρcc	80%			70%			50%			30%			10%			0
ρw	50%	30%	10%	50%	30%	10%	50%	30%	10%	50%	30%	10%	50%	30%	10%	0
ρfc	20%			20%			20%			20%			20%			0
RCR	RCR:Room Cavity Ratio Coefficients of Utilization(CU)															
0.0	1.19	1.19	1.19	1.16	1.16	1.16	1.11	1.11	1.11	1.06	1.06	1.06	1.02	1.02	1.02	.00
1.0	1.04	.99	.95	1.01	.97	.94	.97	.94	.91	.93	.91	.88	.90	.87	.85	.83
2.0	.90	.83	.77	.88	.82	.77	.85	.79	.75	.81	.77	.73	.78	.75	.71	.69
3.0	.79	.71	.64	.78	.70	.64	.75	.68	.63	.72	.66	.61	.69	.64	.60	.58
4.0	.70	.61	.54	.69	.60	.54	.66	.59	.53	.64	.58	.52	.62	.56	.52	.50
5.0	.63	.53	.47	.61	.53	.46	.59	.52	.46	.57	.51	.45	.55	.50	.45	.43
6.0	.56	.47	.41	.55	.47	.41	.53	.46	.40	.52	.45	.40	.50	.44	.39	.37
7.0	.51	.42	.36	.50	.42	.36	.49	.41	.36	.47	.40	.35	.46	.40	.35	.33
8.0	.46	.38	.32	.46	.38	.32	.44	.37	.32	.43	.36	.32	.42	.36	.31	.29
9.0	.43	.34	.29	.42	.34	.29	.41	.34	.29	.40	.33	.28	.39	.33	.28	.26
10.0	.39	.31	.26	.39	.31	.26	.38	.31	.26	.37	.30	.26	.36	.30	.26	.24



C Range: 0 - 360DEG
 C Interval: 30.0DEG
 Test Speed: HIGH
 Temperature:25.3°C
 Operators:DAMIN
 Test Date:2026-02-03

γ Range: 0 - 90DEG
 γ Interval: 5.0DEG
 Test System:EVERFINE GO-2000B_V1 SYSTEM V2.00.488
 Humidity:65.0%
 Test Distance:6.144m [K=1.0000]
 Remarks:

WEC AND CCEC

Test:U:121.26V I:0.2741A P:30.795W PF:0.9265 Freq:50.00Hz Lamp Flux:2639.69x1 lm		
NAME: LS-SM-16R-30W-5CCT-BL	TYPE:	WEIGHT:
SPEC.:	DIM.:	SERIAL No.: 1#35K
MFR.: EVERFINE	SUR.: 0.375	Shielding Angle:

ρ_{CC}	80%			70%			50%			30%			10%			0
ρ_w	50%	30%	10%	50%	30%	10%	50%	30%	10%	50%	30%	10%	50%	30%	10%	0
ρ_{fc}	20%			20%			20%			20%			20%			0
RCR	RCR:Room Cavity Ratio						Wall Exitance Coefficients(WEC)									
0.0																
1.0	.313	.178	.056	.306	.174	.055	.293	.168	.054	.280	.162	.052	.269	.156	.050	
2.0	.294	.161	.049	.287	.158	.049	.276	.153	.048	.265	.149	.047	.255	.144	.045	
3.0	.271	.144	.043	.266	.142	.043	.256	.138	.042	.246	.135	.041	.237	.131	.041	
4.0	.250	.130	.038	.245	.128	.038	.236	.125	.037	.228	.122	.037	.220	.119	.036	
5.0	.231	.118	.034	.227	.116	.034	.219	.114	.034	.211	.111	.033	.204	.109	.033	
6.0	.214	.107	.031	.211	.106	.031	.203	.104	.030	.196	.102	.030	.190	.100	.030	
7.0	.199	.099	.028	.196	.098	.028	.190	.096	.028	.183	.094	.027	.178	.092	.027	
8.0	.186	.091	.026	.183	.090	.025	.177	.089	.025	.172	.087	.025	.167	.086	.025	
9.0	.174	.084	.024	.172	.084	.023	.167	.082	.023	.162	.081	.023	.157	.080	.023	
10.0	.164	.079	.022	.162	.078	.022	.157	.077	.022	.152	.076	.022	.148	.075	.021	

ρ_{CC}	80%			70%			50%			30%			10%			0
ρ_w	50%	30%	10%	50%	30%	10%	50%	30%	10%	50%	30%	10%	50%	30%	10%	0
ρ_{fc}	20%			20%			20%			20%			20%			0
RCR	RCR:Room Cavity Ratio						Ceiling Cavity Exitance Coefficients(CCEC)									
0.0																
1.0	.190	.190	.190	.163	.163	.163	.111	.111	.111	.064	.064	.064	.020	.020	.020	
2.0	.181	.156	.134	.154	.134	.115	.106	.092	.080	.061	.053	.046	.019	.017	.015	
3.0	.173	.132	.098	.148	.114	.085	.101	.079	.059	.058	.046	.035	.019	.015	.011	
4.0	.165	.114	.074	.141	.099	.064	.097	.069	.045	.056	.040	.027	.018	.013	.009	
5.0	.157	.101	.058	.135	.087	.051	.093	.061	.036	.054	.036	.021	.017	.012	.007	
6.0	.150	.091	.047	.129	.078	.041	.089	.055	.029	.051	.032	.017	.017	.010	.006	
7.0	.142	.082	.039	.122	.071	.034	.084	.050	.024	.049	.029	.014	.016	.010	.005	
8.0	.136	.075	.033	.117	.065	.029	.081	.046	.020	.047	.027	.012	.015	.009	.004	
9.0	.129	.070	.029	.111	.060	.025	.077	.042	.018	.045	.025	.011	.014	.008	.003	
10.0	.123	.065	.025	.106	.056	.022	.073	.039	.016	.043	.023	.009	.014	.008	.003	
10.0	.117	.060	.022	.101	.052	.020	.070	.037	.014	.041	.022	.008	.013	.007	.003	

C Range: 0 - 360DEG
 C Interval: 30.0DEG
 Test Speed: HIGH
 Temperature:25.3°C
 Operators:DAMIN
 Test Date:2026-02-03

γ Range: 0 - 90DEG
 γ Interval: 5.0DEG
 Test System:EVERFINE GO-2000B_V1 SYSTEM V2.00.488
 Humidity:65.0%
 Test Distance:6.144m [K=1.0000]
 Remarks:

UGR(Unified Glare Rating) Table

Test:U:121.26V I:0.2741A P:30.795W PF:0.9265 Freq:50.00Hz Lamp Flux:2639.69x1 lm		
NAME: LS-SM-16R-30W-5CCT-BL	TYPE:	WEIGHT:
SPEC.:	DIM.:	SERIAL No.: 1#35K
MFR.: EVERFINE	SUR.: 0.375	Shielding Angle:

ceiling/cavity	0.7	0.7	0.5	0.5	0.3	0.7	0.7	0.5	0.5	0.3
walls	0.5	0.3	0.5	0.3	0.3	0.5	0.3	0.5	0.3	0.3
working plane	0.2	0.2	0.2	0.2	0.2	0.2	0.2	0.2	0.2	0.2

Room dimensions	Viewed crosswise					Viewed endwise				
x = 2H y = 2H	16.6	18.2	16.9	18.4	18.6	16.5	18.0	16.7	18.2	18.4
3H	18.2	19.6	18.5	19.9	20.1	17.9	19.3	18.2	19.6	19.8
4H	18.8	20.2	19.2	20.4	20.7	18.5	19.9	18.8	20.1	20.4
6H	19.3	20.6	19.7	20.9	21.1	18.9	20.2	19.2	20.4	20.7
8H	19.5	20.7	19.8	21.0	21.3	19.0	20.2	19.3	20.5	20.8
12H	19.6	20.7	19.9	21.0	21.3	19.0	20.2	19.4	20.5	20.8
4H 2H	17.2	18.6	17.5	18.8	19.1	17.1	18.4	17.4	18.7	18.9
3H	19.0	20.2	19.3	20.5	20.8	18.8	19.9	19.1	20.2	20.5
4H	19.8	20.8	20.1	21.2	21.5	19.5	20.5	19.8	20.9	21.2
6H	20.4	21.3	20.8	21.7	22.0	20.0	20.9	20.4	21.3	21.6
8H	20.6	21.5	21.0	21.8	22.2	20.1	21.0	20.5	21.4	21.7
12H	20.7	21.5	21.1	21.9	22.3	20.2	21.0	20.6	21.4	21.8
8H 4H	20.0	20.9	20.4	21.3	21.7	19.7	20.6	20.2	21.0	21.4
6H	20.8	21.5	21.2	21.9	22.3	20.4	21.1	20.8	21.5	22.0
8H	21.1	21.7	21.5	22.1	22.6	20.6	21.3	21.1	21.7	22.1
12H	21.3	21.8	21.8	22.3	22.8	20.8	21.3	21.2	21.8	22.3
12H 4H	20.0	20.8	20.5	21.2	21.6	19.8	20.6	20.2	21.0	21.4
6H	20.8	21.5	21.3	21.9	22.4	20.5	21.1	20.9	21.5	22.0
8H	21.2	21.7	21.6	22.2	22.6	20.7	21.3	21.2	21.7	22.2

Variations with the observer position at spacings(CIE Pub.117):		
S = 1.0H	+ 0.1 / - 0.2	+ 0.1 / - 0.2
1.5H	+ 0.2 / - 0.3	+ 0.2 / - 0.3
2.0H	+ 0.2 / - 0.2	+ 0.2 / - 0.3

CIE Pub.117, 2640 lm Total Lamp Luminous Flux Correct (8log(F/F0) = 3.4)
Area: 0.11 m2

C Range: 0 - 360DEG
C Interval: 30.0DEG
Test Speed: HIGH
Temperature:25.3°C
Operators:DAMIN
Test Date:2026-02-03

γ Range: 0 - 90DEG
γ Interval: 5.0DEG
Test System:EVERFINE GO-2000B_V1 SYSTEM V2.00.488
Humidity:65.0%
Test Distance:6.144m [K=1.0000]
Remarks:

UTILIZATION FACTORS TABLE

Test:U:121.26V I:0.2741A P:30.795W PF:0.9265 Freq:50.00Hz Lamp Flux:2639.69x1 lm		
NAME: LS-SM-16R-30W-5CCT-BL	TYPE:	WEIGHT:
SPEC.:	DIM.:	SERIAL No.: 1#35K
MFR.: EVERFINE	SUR.: 0.375	Shielding Angle:

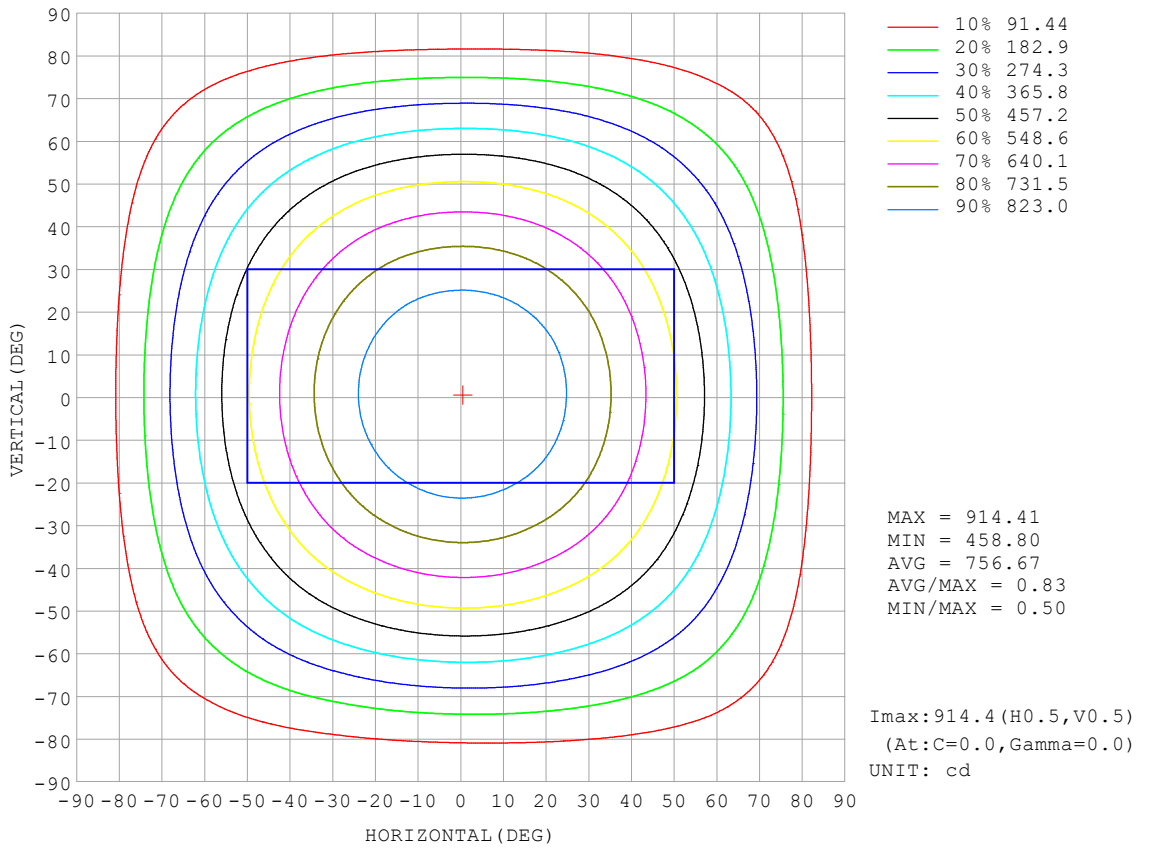
REFLECTANCE										
Ceiling	0.8	0.8	0.8	0.7	0.7	0.7	0.5	0.5	0.5	0
Walls	0.7	0.5	0.3	0.7	0.5	0.3	0.7	0.5	0.3	0
Working plane	0.2	0.2	0.2	0.2	0.2	0.2	0.2	0.2	0.2	0
ROOM INDEX	UTILIZATION FACTORS (PERCENT) $k(RI) \times RCR = 5$									
k = 0.60	57	46	39	57	45	39	55	45	38	32
0.80	67	56	48	66	55	48	65	54	48	41
1.00	76	65	57	75	64	57	72	65	56	49
1.25	83	72	65	81	72	65	79	70	64	57
1.50	88	78	71	86	77	70	83	75	69	62
2.00	95	86	80	93	85	79	89	83	77	69
2.50	99	91	85	97	89	84	93	87	82	74
3.00	102	95	90	100	94	88	96	91	86	78
4.00	106	100	96	104	99	94	99	95	92	83
5.00	109	104	100	106	102	98	102	98	95	86
ROOM INDEX	UF(total)									Direct
According to DIN EN 13032-2 2004			Suspended				SHRNOM = 1.25			

C Range: 0 - 360DEG
 C Interval: 30.0DEG
 Test Speed: HIGH
 Temperature:25.3°C
 Operators:DAMIN
 Test Date:2026-02-03

γ Range: 0 - 90DEG
 γ Interval: 5.0DEG
 Test System:EVERFINE GO-2000B_V1 SYSTEM V2.00.488
 Humidity:65.0%
 Test Distance:6.144m [K=1.0000]
 Remarks:

ISOCANDELA DIAGRAM

Test:U:121.26V I:0.2741A P:30.795W PF:0.9265 Freq:50.00Hz Lamp Flux:2639.69x1 lm		
NAME: LS-SM-16R-30W-5CCT-BL	TYPE:	WEIGHT:
SPEC.:	DIM.:	SERIAL No.: 1#35K
MFR.: EVERFINE	SUR.: 0.375	Shielding Angle:

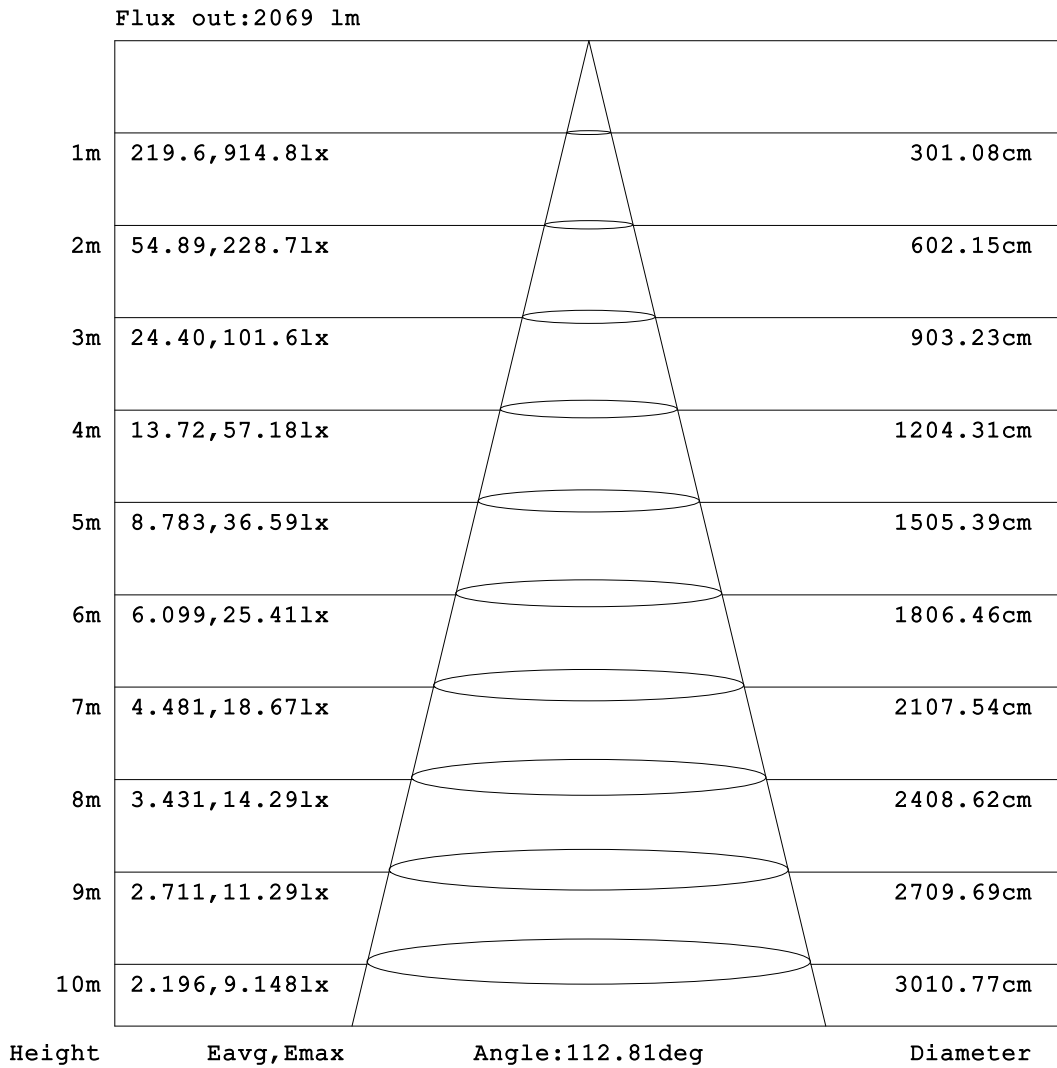


C Range: 0 - 360DEG
 C Interval: 30.0DEG
 Test Speed: HIGH
 Temperature:25.3°C
 Operators:DAMIN
 Test Date:2026-02-03

γ Range: 0 - 90DEG
 γ Interval: 5.0DEG
 Test System:EVERFINE GO-2000B_V1 SYSTEM V2.00.488
 Humidity:65.0%
 Test Distance:6.144m [K=1.0000]
 Remarks:

AAI Figure

Test:U:121.26V I:0.2741A P:30.795W PF:0.9265 Freq:50.00Hz Lamp Flux:2639.69x1 lm		
NAME: LS-SM-16R-30W-5CCT-BL	TYPE:	WEIGHT:
SPEC.:	DIM.:	SERIAL No.: 1#35K
MFR.: EVERFINE	SUR.: 0.375	Shielding Angle:



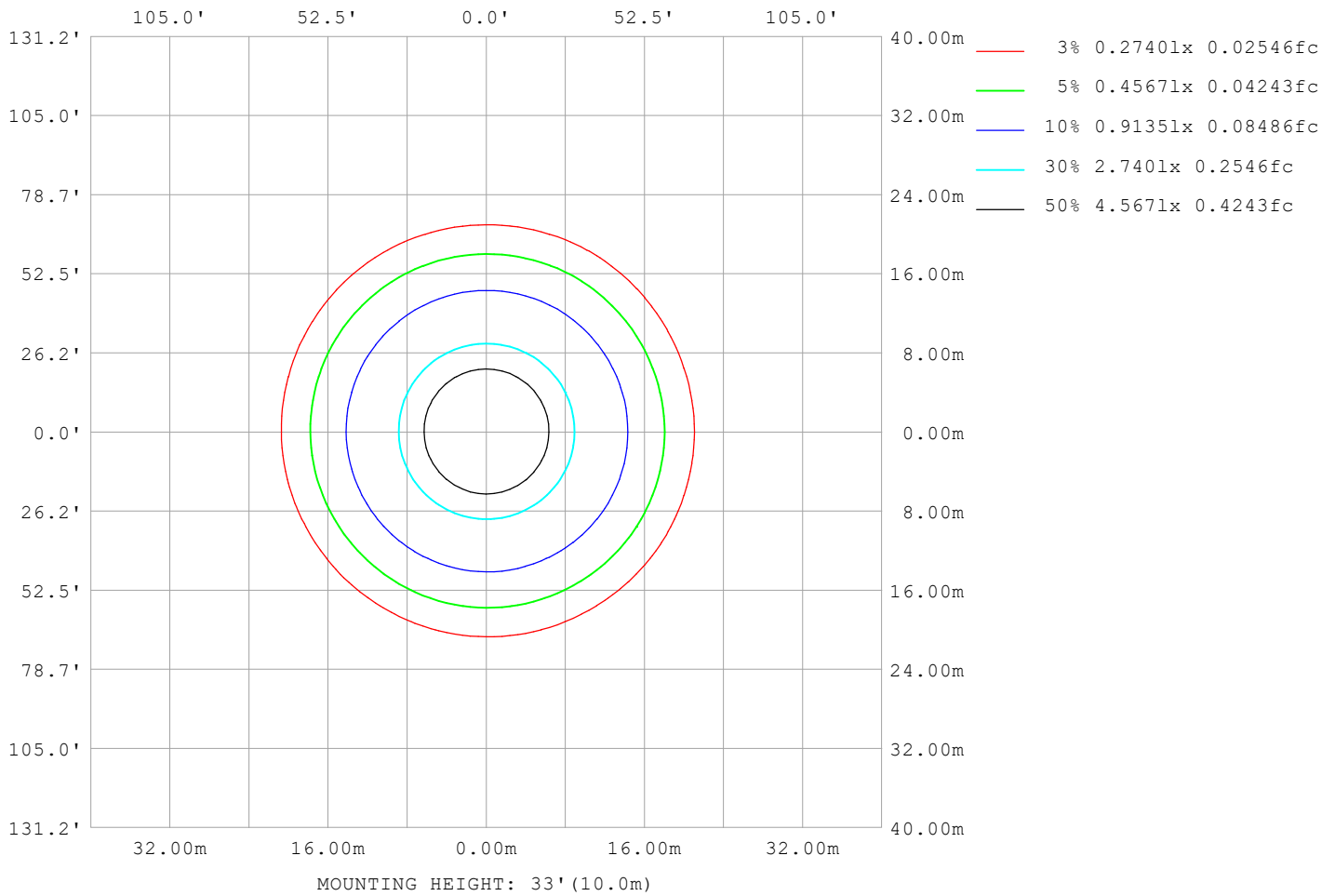
Note: The Curves indicate the illuminated area and the average illumination when the luminaire is at different distance.

C Range: 0 - 360DEG
 C Interval: 30.0DEG
 Test Speed: HIGH
 Temperature: 25.3°C
 Operators: DAMIN
 Test Date: 2026-02-03

γ Range: 0 - 90DEG
 γ Interval: 5.0DEG
 Test System: EVERFINE GO-2000B_V1 SYSTEM V2.00.488
 Humidity: 65.0%
 Test Distance: 6.144m [K=1.0000]
 Remarks:

ISOLUX DIAGRAM

Test:U:121.26V I:0.2741A P:30.795W PF:0.9265 Freq:50.00Hz Lamp Flux:2639.69x1 lm		
NAME: LS-SM-16R-30W-5CCT-BL	TYPE:	WEIGHT:
SPEC.:	DIM.:	SERIAL No.: 1#35K
MFR.: EVERFINE	SUR.: 0.375	Shielding Angle:



C Range: 0 - 360DEG
 C Interval: 30.0DEG
 Test Speed: HIGH
 Temperature:25.3°C
 Operators:DAMIN
 Test Date:2026-02-03

γ Range: 0 - 90DEG
 γ Interval: 5.0DEG
 Test System:EVERFINE GO-2000B_V1 SYSTEM V2.00.488
 Humidity:65.0%
 Test Distance:6.144m [K=1.0000]
 Remarks:

LED Avg.L Report

Test:U:121.26V I:0.2741A P:30.795W PF:0.9265 Freq:50.00Hz Lamp Flux:2639.69x1 lm		
NAME: LS-SM-16R-30W-5CCT-BL	TYPE:	WEIGHT:
SPEC.:	DIM.:	SERIAL No.: 1#35K
MFR.: EVERFINE	SUR.: 0.375	Shielding Angle:

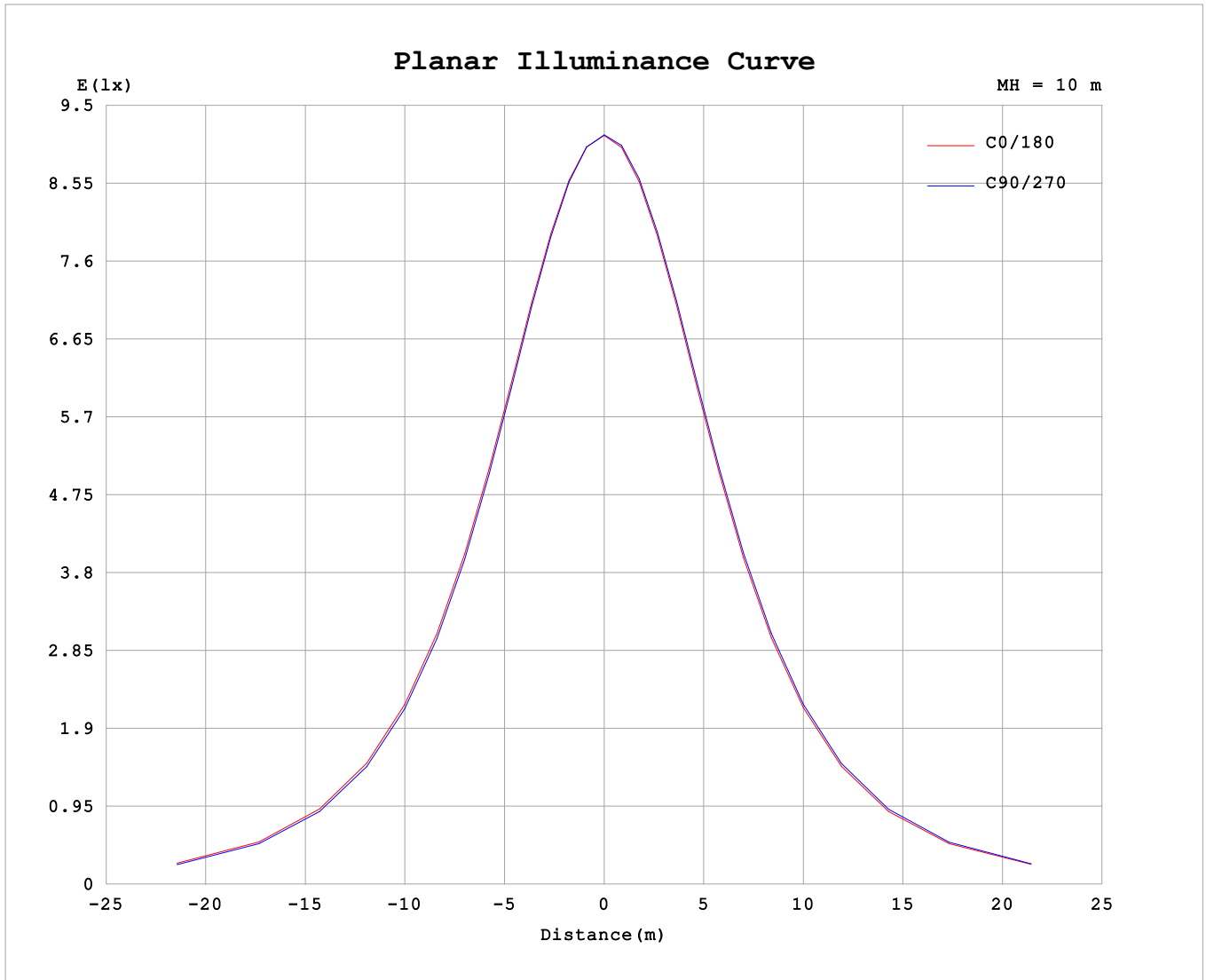
AvgL	cd/m2
L_0~180 (65) av	7132
L_0~180 (75) av	6366
L_0~180 (85) av	4960
L_90~270 (65) av	7048
L_90~270 (75) av	6193
L_90~270 (85) av	4725
L_45 (65) av	7074
L_45 (75) av	6245
L_45 (85) av	4787

Standard: GB/T 29293-2012

C Range: 0 - 360DEG
 C Interval: 30.0DEG
 Test Speed: HIGH
 Temperature:25.3°C
 Operators:DAMIN
 Test Date:2026-02-03

γ Range: 0 - 90DEG
 γ Interval: 5.0DEG
 Test System:EVERFINE GO-2000B_V1 SYSTEM V2.00.488
 Humidity:65.0%
 Test Distance:6.144m [K=1.0000]
 Remarks:

Planar Illuminance Curve



C Range: 0 - 360DEG
 C Interval: 30.0DEG
 Test Speed: HIGH
 Temperature: 25.3°C
 Operators: DAMIN
 Test Date: 2026-02-03

γ Range: 0 - 90DEG
 γ Interval: 5.0DEG
 Test System: EVERFINE GO-2000B_V1 SYSTEM V2.00.488
 Humidity: 65.0%
 Test Distance: 6.144m [K=1.0000]
 Remarks:

