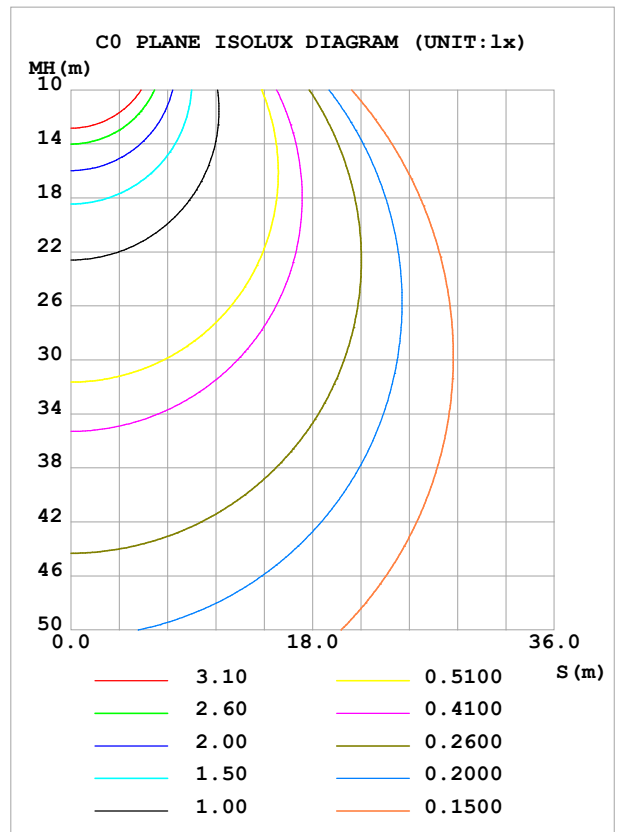
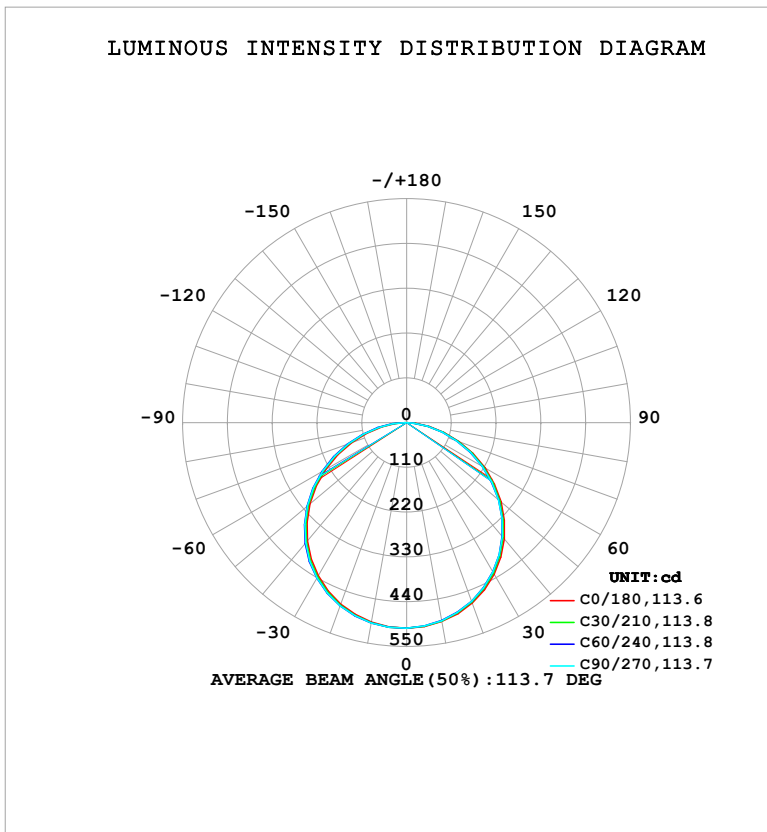


LUMINAIRE PHOTOMETRIC TEST REPORT

Test:U:121.00V I:0.2155A P:23.899W PF:0.9164 Freq:60.00Hz Lamp Flux:1470.15x1 lm		
NAME: LS-SM-12R-24W-5CCT-BL	TYPE:	WEIGHT:
SPEC.:	DIM.:	SERIAL No.: 1#27K
MFR.: EVERFINE	SUR.: 0.274	Shielding Angle:

DATA OF LAMP		PHOTOMETRIC DATA				Eff: 61.52 lm/W
MODELS-SM-12R-24W-5CCT-BL-27K		I _{max} (cd)	505.0	S/MH (C0/180)		1.28
NOMINAL POWER (W)	24	LOR (%)	100.0	S/MH (C90/270)		1.29
RATED VOLTAGE (V)	120	TOTAL FLUX (lm)	1470.1	η UP, DN (C0-180)		0.0,48.6
NOMINAL FLUX (lm)	1470.15	CIE CLASS	DIRECT	η UP, DN (C180-360)		0.0,51.4
LAMPS INSIDE	1	η up (%)	0.0	CIBSE SHR NOM		1.25
TEST VOLTAGE (V)	120	η down (%)	100.0	CIBSE SHR MAX		1.35



C Range: 0 - 360DEG
C Interval: 30.0DEG
Test Speed: HIGH
Temperature:25.3°C
Operators:DAMIN
Test Date:2026-02-03

γ Range: 0 - 90DEG
γ Interval: 5.0DEG
Test System:EVERFINE GO-2000B_V1 SYSTEM V2.00.488
Humidity:65.0%
Test Distance:6.144m [K=1.0000]
Remarks:

ZONAL FLUX DIAGRAM

ZONAL FLUX DIAGRAM:

γ	C0	C45	C90	C135	C180	C225	C270	C315	γ	Φ zone	Φ total	%lum,lamp
10	496.2	494.4	494.1	495.1	497.7	499.5	499.7	498.7	0- 10	47.82	47.82	3.25,3.25
20	471.3	467.9	467.2	469.2	474.3	477.8	478.3	476.2	10- 20	137.4	185.3	12.6,12.6
30	430.2	425.2	424.2	427.3	434.5	439.7	440.4	437.3	20- 30	209.5	394.8	26.9,26.9
40	373.3	367.2	366.2	369.9	379.1	385.5	386.2	382.2	30- 40	254.0	648.8	44.1,44.1
50	303.0	296.5	295.3	299.5	309.8	317.4	318.0	313.3	40- 50	264.4	913.2	62.1,62.1
60	222.6	216.2	214.8	218.8	229.4	237.8	238.3	233.0	50- 60	239.0	1152	78.4,78.4
70	137.1	132.0	130.4	132.7	143.2	152.3	152.4	146.6	60- 70	181.9	1334	90.7,90.7
80	56.83	53.36	51.91	53.08	61.54	69.91	69.91	63.98	70- 80	105.3	1439	97.9,97.9
90	0.9324	1.011	1.031	0.9522	1.027	3.092	3.740	1.761	80- 90	30.67	1470	100,100
100									90-100			
110									100-110			
120									110-120			
130									120-130			
140									130-140			
150									140-150			
160									150-160			
170									160-170			
180									170-180			
DEG	LUMINOUS INTENSITY:cd									UNIT:lm		

Conical surface Flux(90deg): 781.94 lm

%lum = 53.2%

%lamp = 53.2%

Conical surface Flux(130deg): 1251.9 lm

%lum = 85.2%

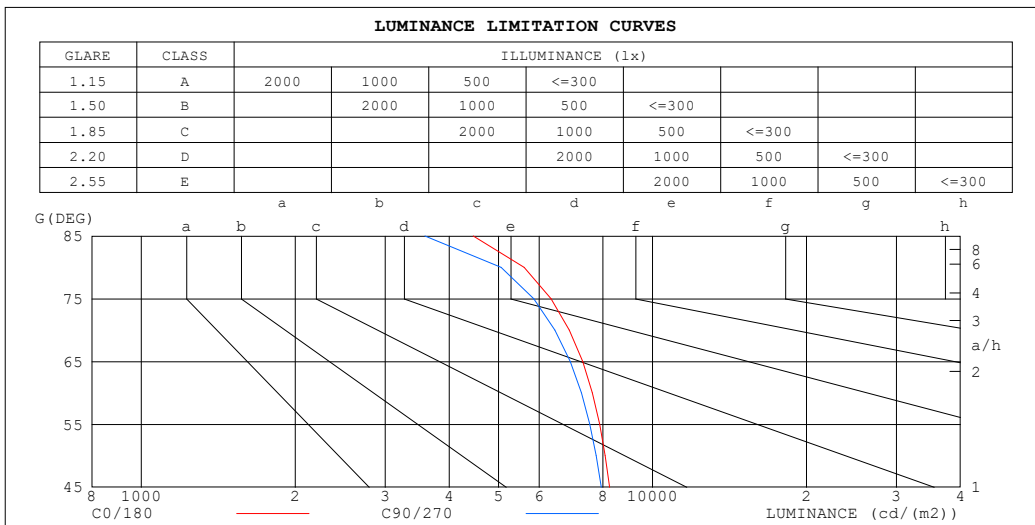
%lamp = 85.2%

C Range: 0 - 360DEG
 C Interval: 30.0DEG
 Test Speed: HIGH
 Temperature:25.3°C
 Operators:DAMIN
 Test Date:2026-02-03

γ Range: 0 - 90DEG
 γ Interval: 5.0DEG
 Test System:EVERFINE GO-2000B_V1 SYSTEM V2.00.488
 Humidity:65.0%
 Test Distance:6.144m [K=1.0000]
 Remarks:

LUMINANCE LIMITATION CURVES

Test:U:121.00V I:0.2155A P:23.899W PF:0.9164 Freq:60.00Hz Lamp Flux:1470.15x1 lm		
NAME: LS-SM-12R-24W-5CCT-BL	TYPE:	WEIGHT:
SPEC.:	DIM.:	SERIAL No.: 1#27K
MFR.: EVERFINE	SUR.: 0.274	Shielding Angle:



LUMINANCE cd/(m2)		
G (DEG)	C0/180	C90/270
85	4456	3585
80	5609	5052
75	6334	5853
70	6870	6443
65	7298	6904
60	7630	7261
55	7882	7540
50	8080	7763
45	8236	7937

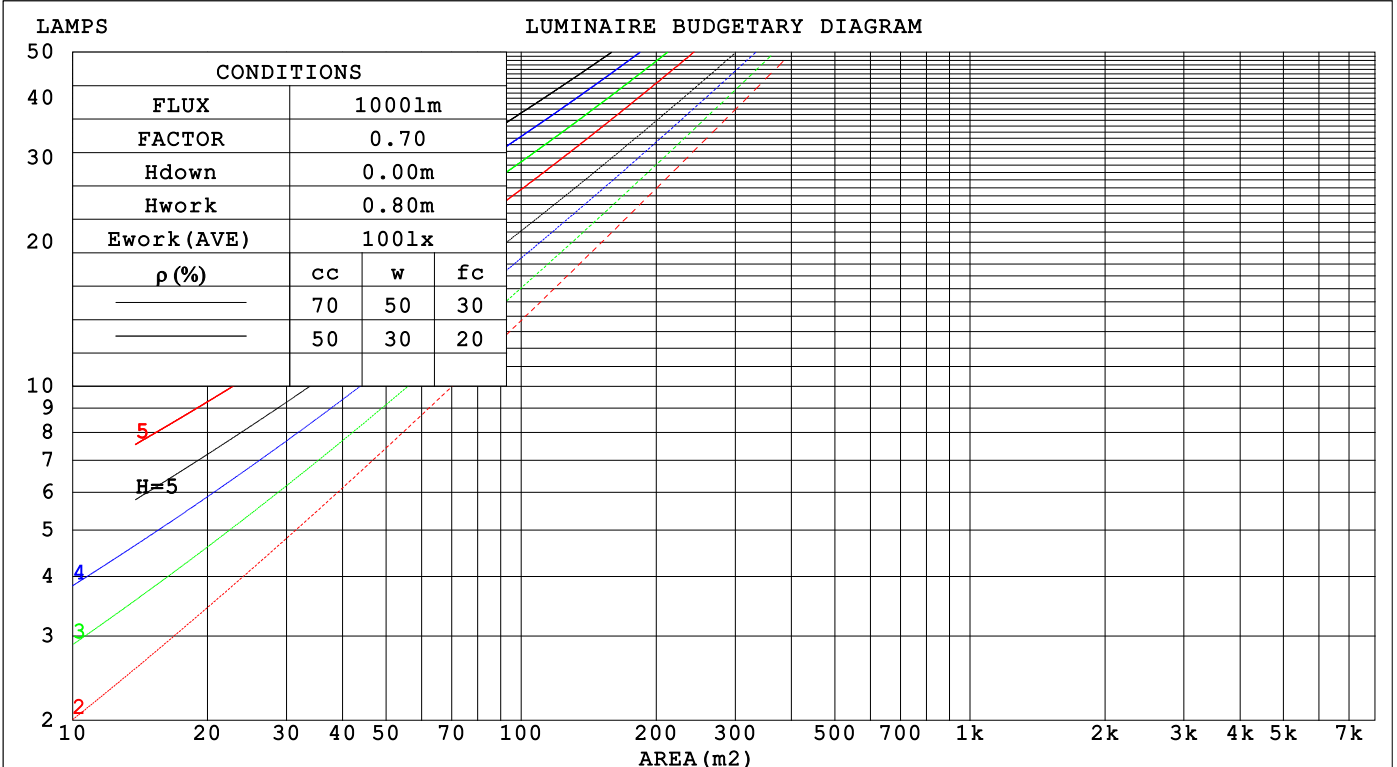
C Range: 0 - 360DEG
 C Interval: 30.0DEG
 Test Speed: HIGH
 Temperature:25.3°C
 Operators:DAMIN
 Test Date:2026-02-03

γ Range: 0 - 90DEG
 γ Interval: 5.0DEG
 Test System:EVERFINE GO-2000B_V1 SYSTEM V2.00.488
 Humidity:65.0%
 Test Distance:6.144m [K=1.0000]
 Remarks:

CU AND LUMINAIRE BUDGETARY ESTIMATE DIAGRAM

Test:U:121.00V I:0.2155A P:23.899W PF:0.9164 Freq:60.00Hz Lamp Flux:1470.15x1 lm		
NAME: LS-SM-12R-24W-5CCT-BL	TYPE:	WEIGHT:
SPEC.:	DIM.:	SERIAL No.: 1#27K
MFR.: EVERFINE	SUR.: 0.274	Shielding Angle:

ρcc	80%			70%			50%			30%			10%			0
ρw	50%	30%	10%	50%	30%	10%	50%	30%	10%	50%	30%	10%	50%	30%	10%	0
ρfc	20%			20%			20%			20%			20%			0
RCR	RCR:Room Cavity Ratio															
	Coefficients of Utilization(CU)															
0.0	1.19	1.19	1.19	1.16	1.16	1.16	1.11	1.11	1.11	1.06	1.06	1.06	1.02	1.02	1.02	.00
1.0	1.04	.99	.95	1.01	.97	.94	.97	.94	.91	.93	.91	.88	.90	.87	.85	.83
2.0	.90	.83	.77	.88	.82	.77	.85	.79	.75	.81	.77	.73	.78	.75	.71	.69
3.0	.79	.71	.64	.78	.70	.64	.75	.68	.62	.72	.66	.61	.69	.64	.60	.58
4.0	.70	.61	.54	.69	.60	.54	.66	.59	.53	.64	.57	.52	.62	.56	.52	.50
5.0	.62	.53	.47	.61	.53	.46	.59	.52	.46	.57	.51	.45	.55	.50	.45	.43
6.0	.56	.47	.41	.55	.47	.40	.53	.46	.40	.52	.45	.40	.50	.44	.39	.37
7.0	.51	.42	.36	.50	.42	.36	.49	.41	.35	.47	.40	.35	.46	.40	.35	.33
8.0	.46	.38	.32	.46	.38	.32	.44	.37	.32	.43	.36	.31	.42	.36	.31	.29
9.0	.43	.34	.29	.42	.34	.29	.41	.34	.28	.40	.33	.28	.39	.33	.28	.26
10.0	.39	.31	.26	.39	.31	.26	.38	.31	.26	.37	.30	.26	.36	.30	.26	.24



C Range: 0 - 360DEG
 C Interval: 30.0DEG
 Test Speed: HIGH
 Temperature:25.3°C
 Operators:DAMIN
 Test Date:2026-02-03

γ Range: 0 - 90DEG
 γ Interval: 5.0DEG
 Test System:EVERFINE GO-2000B_V1 SYSTEM V2.00.488
 Humidity:65.0%
 Test Distance:6.144m [K=1.0000]
 Remarks:

WEC AND CCEC

Test:U:121.00V I:0.2155A P:23.899W PF:0.9164 Freq:60.00Hz								
Lamp Flux:1470.15x1 lm								
NAME: LS-SM-12R-24W-5CCT-BL			TYPE:			WEIGHT:		
SPEC.:			DIM.:			SERIAL No.: 1#27K		
MFR.: EVERFINE			SUR.: 0.274			Shielding Angle:		

ρ_{CC}	80%			70%			50%			30%			10%			0
ρ_w	50%	30%	10%	50%	30%	10%	50%	30%	10%	50%	30%	10%	50%	30%	10%	0
ρ_{fc}	20%			20%			20%			20%			20%			0
RCR	RCR:Room Cavity Ratio						Wall Exitance Coefficients(WEC)									
0.0																
1.0	.313	.178	.056	.306	.175	.055	.293	.168	.054	.281	.162	.052	.269	.156	.050	
2.0	.294	.161	.049	.288	.158	.049	.276	.153	.048	.265	.149	.047	.255	.144	.046	
3.0	.272	.145	.043	.266	.143	.043	.256	.139	.042	.246	.135	.041	.237	.131	.041	
4.0	.250	.130	.038	.246	.129	.038	.236	.125	.037	.228	.122	.037	.220	.120	.036	
5.0	.231	.118	.034	.227	.117	.034	.219	.114	.034	.211	.112	.033	.204	.109	.033	
6.0	.215	.108	.031	.211	.106	.031	.203	.104	.030	.197	.102	.030	.190	.100	.030	
7.0	.200	.099	.028	.196	.098	.028	.190	.096	.028	.184	.094	.027	.178	.092	.027	
8.0	.186	.091	.026	.183	.090	.026	.177	.089	.025	.172	.087	.025	.167	.086	.025	
9.0	.175	.084	.024	.172	.084	.024	.167	.082	.023	.162	.081	.023	.157	.080	.023	
10.0	.164	.079	.022	.162	.078	.022	.157	.077	.022	.153	.076	.022	.148	.075	.021	

ρ_{CC}	80%			70%			50%			30%			10%			0
ρ_w	50%	30%	10%	50%	30%	10%	50%	30%	10%	50%	30%	10%	50%	30%	10%	0
ρ_{fc}	20%			20%			20%			20%			20%			0
RCR	RCR:Room Cavity Ratio						Ceiling Cavity Exitance Coefficients(CCEC)									
0.0	.190	.190	.190	.163	.163	.163	.111	.111	.111	.064	.064	.064	.020	.020	.020	
1.0	.181	.156	.134	.154	.134	.115	.106	.092	.080	.061	.053	.046	.019	.017	.015	
2.0	.173	.132	.098	.148	.114	.084	.101	.079	.059	.058	.046	.035	.019	.015	.011	
3.0	.165	.114	.074	.141	.099	.064	.097	.069	.045	.056	.040	.027	.018	.013	.009	
4.0	.157	.101	.058	.135	.087	.050	.093	.061	.036	.054	.036	.021	.017	.012	.007	
5.0	.150	.091	.047	.129	.078	.041	.089	.055	.029	.051	.032	.017	.017	.010	.006	
6.0	.143	.082	.039	.123	.071	.034	.085	.050	.024	.049	.029	.014	.016	.010	.005	
7.0	.136	.075	.033	.117	.065	.029	.081	.046	.020	.047	.027	.012	.015	.009	.004	
8.0	.129	.070	.029	.111	.060	.025	.077	.042	.018	.045	.025	.011	.014	.008	.003	
9.0	.123	.065	.025	.106	.056	.022	.073	.039	.016	.043	.023	.009	.014	.008	.003	
10.0	.117	.060	.022	.101	.052	.020	.070	.037	.014	.041	.022	.008	.013	.007	.003	

C Range: 0 - 360DEG
 C Interval: 30.0DEG
 Test Speed: HIGH
 Temperature:25.3°C
 Operators:DAMIN
 Test Date:2026-02-03

γ Range: 0 - 90DEG
 γ Interval: 5.0DEG
 Test System:EVERFINE GO-2000B_V1 SYSTEM V2.00.488
 Humidity:65.0%
 Test Distance:6.144m [K=1.0000]
 Remarks:

UGR(Unified Glare Rating) Table

Test:U:121.00V I:0.2155A P:23.899W PF:0.9164 Freq:60.00Hz Lamp Flux:1470.15x1 lm		
NAME: LS-SM-12R-24W-5CCT-BL	TYPE:	WEIGHT:
SPEC.:	DIM.:	SERIAL No.: 1#27K
MFR.: EVERFINE	SUR.: 0.274	Shielding Angle:

ceiling/cavity	0.7	0.7	0.5	0.5	0.3	0.7	0.7	0.5	0.5	0.3
walls	0.5	0.3	0.5	0.3	0.3	0.5	0.3	0.5	0.3	0.3
working plane	0.2	0.2	0.2	0.2	0.2	0.2	0.2	0.2	0.2	0.2

Room dimensions	Viewed crosswise					Viewed endwise				
x = 2H y = 2H	18.6	20.1	18.9	20.3	20.6	18.4	19.9	18.7	20.1	20.3
3H	20.1	21.5	20.4	21.7	22.0	19.8	21.2	20.1	21.5	21.7
4H	20.7	22.0	21.0	22.3	22.5	20.4	21.7	20.7	22.0	22.2
6H	21.0	22.3	21.4	22.6	22.9	20.7	22.0	21.0	22.3	22.5
8H	21.1	22.3	21.5	22.6	22.9	20.7	22.0	21.1	22.3	22.6
12H	21.2	22.3	21.5	22.6	22.9	20.8	21.9	21.1	22.2	22.5
4H 2H	19.2	20.5	19.5	20.8	21.0	19.0	20.4	19.3	20.6	20.9
3H	20.8	22.0	21.2	22.3	22.6	20.6	21.8	21.0	22.1	22.4
4H	21.5	22.6	21.9	22.9	23.3	21.3	22.3	21.6	22.7	23.0
6H	22.0	23.0	22.4	23.3	23.7	21.7	22.7	22.1	23.0	23.4
8H	22.1	23.0	22.5	23.4	23.8	21.8	22.7	22.2	23.0	23.4
12H	22.2	23.0	22.6	23.4	23.8	21.8	22.6	22.2	23.0	23.4
8H 4H	21.7	22.6	22.2	23.0	23.4	21.5	22.4	21.9	22.8	23.2
6H	22.3	23.1	22.8	23.5	23.9	22.1	22.8	22.5	23.2	23.6
8H	22.5	23.2	23.0	23.6	24.0	22.2	22.8	22.6	23.3	23.7
12H	22.6	23.2	23.1	23.7	24.1	22.3	22.8	22.7	23.3	23.8
12H 4H	21.7	22.6	22.2	22.9	23.3	21.5	22.3	21.9	22.7	23.1
6H	22.4	23.0	22.8	23.4	23.9	22.1	22.7	22.5	23.2	23.6
8H	22.6	23.1	23.0	23.6	24.1	22.2	22.8	22.7	23.2	23.7

Variations with the observer position at spacings(CIE Pub.117):		
S = 1.0H	+ 0.1 / - 0.2	+ 0.1 / - 0.2
1.5H	+ 0.1 / - 0.3	+ 0.2 / - 0.3
2.0H	+ 0.3 / - 0.3	+ 0.3 / - 0.3

CIE Pub.117, 1470 lm Total Lamp Luminous Flux Correct (8log(F/F0) = 1.3)
Area: 0.059 m2

C Range: 0 - 360DEG
C Interval: 30.0DEG
Test Speed: HIGH
Temperature:25.3°C
Operators:DAMIN
Test Date:2026-02-03

γ Range: 0 - 90DEG
γ Interval: 5.0DEG
Test System:EVERFINE GO-2000B_V1 SYSTEM V2.00.488
Humidity:65.0%
Test Distance:6.144m [K=1.0000]
Remarks:

UTILIZATION FACTORS TABLE

Test:U:121.00V I:0.2155A P:23.899W PF:0.9164 Freq:60.00Hz Lamp Flux:1470.15x1 lm		
NAME: LS-SM-12R-24W-5CCT-BL	TYPE:	WEIGHT:
SPEC.:	DIM.:	SERIAL No.: 1#27K
MFR.: EVERFINE	SUR.: 0.274	Shielding Angle:

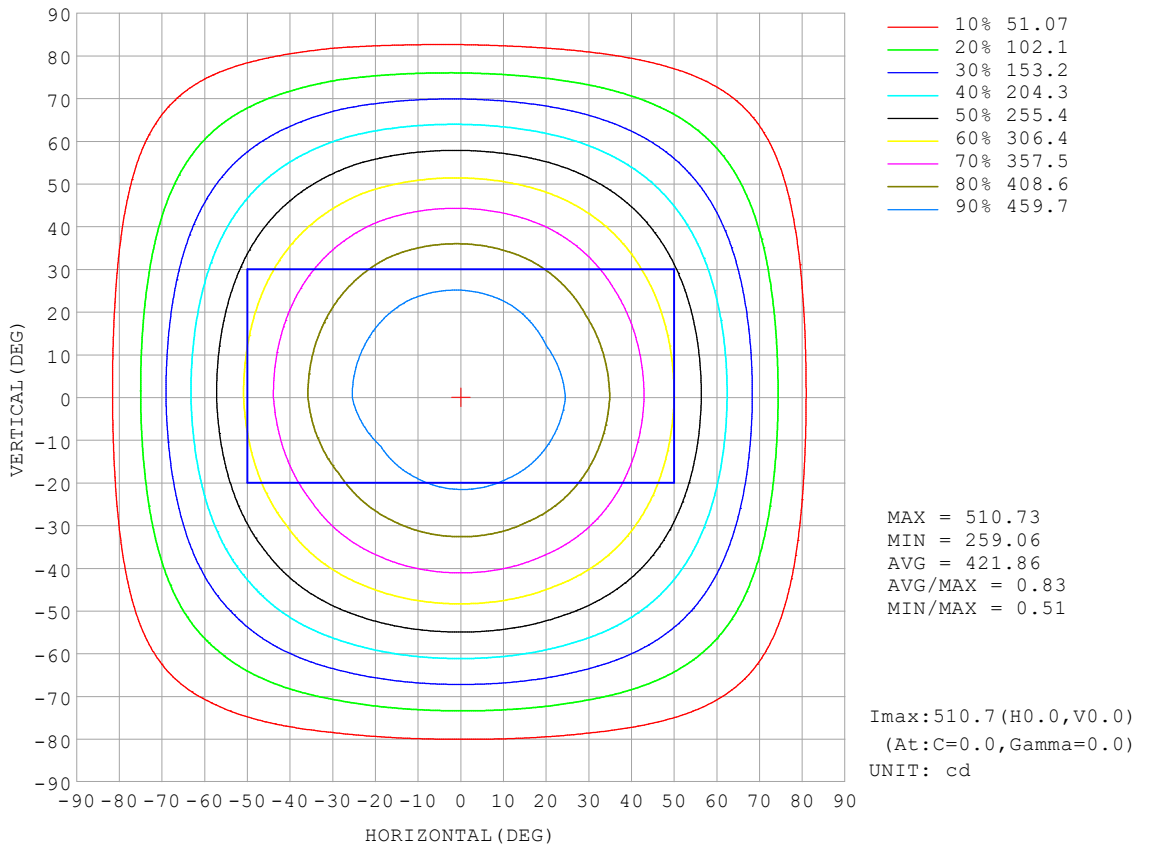
REFLECTANCE										
Ceiling	0.8	0.8	0.8	0.7	0.7	0.7	0.5	0.5	0.5	0
Walls	0.7	0.5	0.3	0.7	0.5	0.3	0.7	0.5	0.3	0
Working plane	0.2	0.2	0.2	0.2	0.2	0.2	0.2	0.2	0.2	0
ROOM INDEX	UTILIZATION FACTORS (PERCENT) $k(RI) \times RCR = 5$									
k = 0.60	57	46	39	56	45	38	55	45	38	32
0.80	67	56	48	66	55	48	64	54	48	41
1.00	76	65	57	75	64	57	72	65	56	49
1.25	83	72	65	81	72	65	79	70	64	56
1.50	88	78	71	86	77	70	83	75	69	62
2.00	95	86	80	93	85	79	89	83	77	69
2.50	99	91	85	97	89	84	93	87	82	74
3.00	102	95	90	100	94	88	96	91	86	78
4.00	106	100	96	104	99	94	99	95	92	83
5.00	109	104	100	106	102	98	102	98	95	86
ROOM INDEX	UF(total)									Direct
According to DIN EN 13032-2 2004			Suspended				SHRNOM = 1.25			

C Range: 0 - 360DEG
 C Interval: 30.0DEG
 Test Speed: HIGH
 Temperature:25.3°C
 Operators:DAMIN
 Test Date:2026-02-03

γ Range: 0 - 90DEG
 γ Interval: 5.0DEG
 Test System:EVERFINE GO-2000B_V1 SYSTEM V2.00.488
 Humidity:65.0%
 Test Distance:6.144m [K=1.0000]
 Remarks:

ISOCANDELA DIAGRAM

Test:U:121.00V I:0.2155A P:23.899W PF:0.9164 Freq:60.00Hz Lamp Flux:1470.15x1 lm		
NAME: LS-SM-12R-24W-5CCT-BL	TYPE:	WEIGHT:
SPEC.:	DIM.:	SERIAL No.: 1#27K
MFR.: EVERFINE	SUR.: 0.274	Shielding Angle:

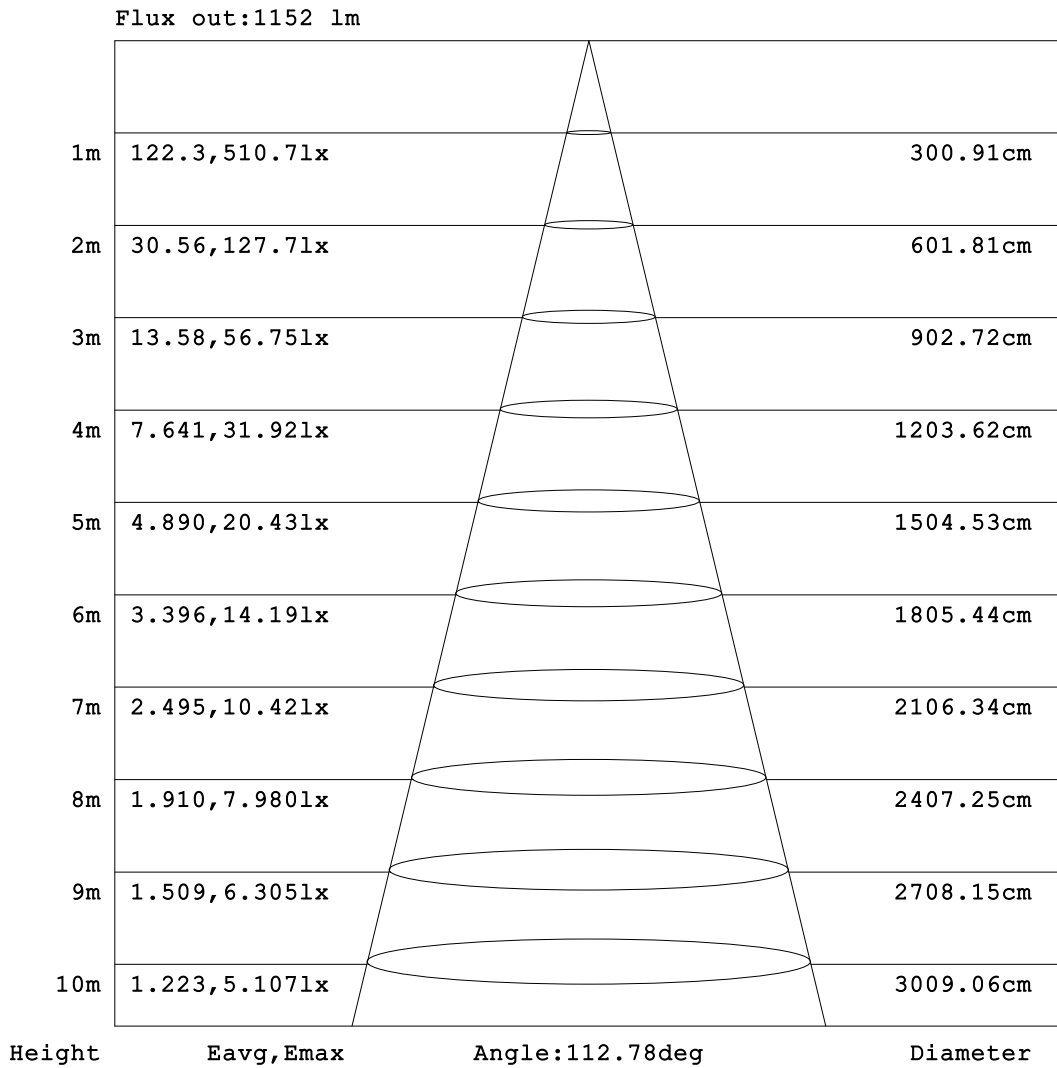


C Range: 0 - 360DEG
 C Interval: 30.0DEG
 Test Speed: HIGH
 Temperature:25.3°C
 Operators:DAMIN
 Test Date:2026-02-03

γ Range: 0 - 90DEG
 γ Interval: 5.0DEG
 Test System:EVERFINE GO-2000B_V1 SYSTEM V2.00.488
 Humidity:65.0%
 Test Distance:6.144m [K=1.0000]
 Remarks:

AAI Figure

Test:U:121.00V I:0.2155A P:23.899W PF:0.9164 Freq:60.00Hz Lamp Flux:1470.15x1 lm		
NAME: LS-SM-12R-24W-5CCT-BL	TYPE:	WEIGHT:
SPEC.:	DIM.:	SERIAL No.: 1#27K
MFR.: EVERFINE	SUR.: 0.274	Shielding Angle:



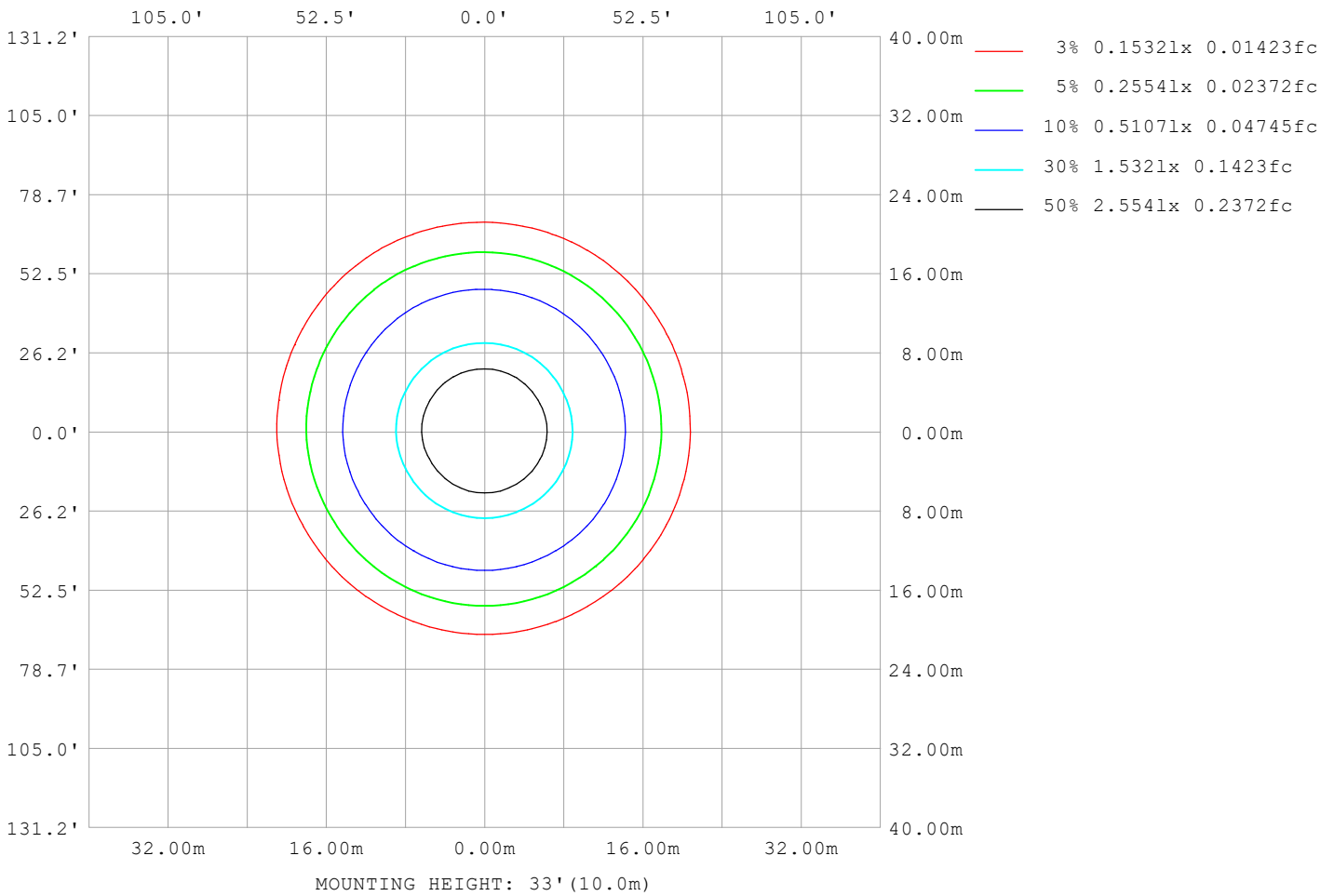
Note: The Curves indicate the illuminated area and the average illumination when the luminaire is at different distance.

C Range: 0 - 360DEG
 C Interval: 30.0DEG
 Test Speed: HIGH
 Temperature: 25.3°C
 Operators: DAMIN
 Test Date: 2026-02-03

γ Range: 0 - 90DEG
 γ Interval: 5.0DEG
 Test System: EVERFINE GO-2000B_V1 SYSTEM V2.00.488
 Humidity: 65.0%
 Test Distance: 6.144m [K=1.0000]
 Remarks:

ISOLUX DIAGRAM

Test:U:121.00V I:0.2155A P:23.899W PF:0.9164 Freq:60.00Hz Lamp Flux:1470.15x1 lm		
NAME: LS-SM-12R-24W-5CCT-BL	TYPE:	WEIGHT:
SPEC.:	DIM.:	SERIAL No.: 1#27K
MFR.: EVERFINE	SUR.: 0.274	Shielding Angle:



C Range: 0 - 360DEG
 C Interval: 30.0DEG
 Test Speed: HIGH
 Temperature:25.3°C
 Operators:DAMIN
 Test Date:2026-02-03

γ Range: 0 - 90DEG
 γ Interval: 5.0DEG
 Test System:EVERFINE GO-2000B_V1 SYSTEM V2.00.488
 Humidity:65.0%
 Test Distance:6.144m [K=1.0000]
 Remarks:

LED Avg.L Report

Test:U:121.00V I:0.2155A P:23.899W PF:0.9164 Freq:60.00Hz Lamp Flux:1470.15x1 lm		
NAME: LS-SM-12R-24W-5CCT-BL	TYPE:	WEIGHT:
SPEC.:	DIM.:	SERIAL No.: 1#27K
MFR.: EVERFINE	SUR.: 0.274	Shielding Angle:

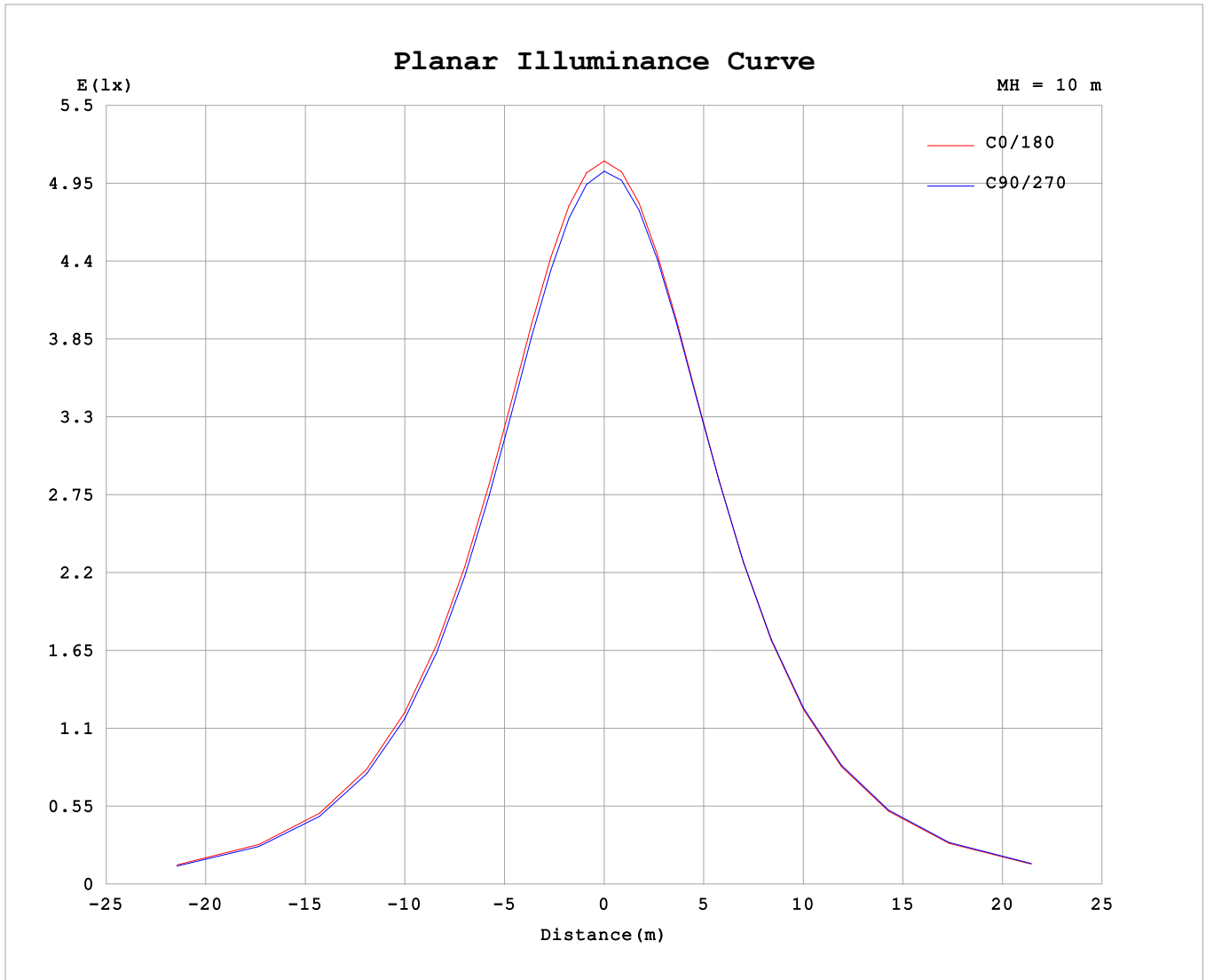
AvgL	cd/m2
L_0~180 (65) av	7351
L_0~180 (75) av	6437
L_0~180 (85) av	4804
L_90~270 (65) av	7385
L_90~270 (75) av	6546
L_90~270 (85) av	5084
L_45 (65) av	7375
L_45 (75) av	6495
L_45 (85) av	4950

Standard: GB/T 29293-2012

C Range: 0 - 360DEG
 C Interval: 30.0DEG
 Test Speed: HIGH
 Temperature:25.3°C
 Operators:DAMIN
 Test Date:2026-02-03

γ Range: 0 - 90DEG
 γ Interval: 5.0DEG
 Test System:EVERFINE GO-2000B_V1 SYSTEM V2.00.488
 Humidity:65.0%
 Test Distance:6.144m [K=1.0000]
 Remarks:

Planar Illuminance Curve



C Range: 0 - 360DEG
 C Interval: 30.0DEG
 Test Speed: HIGH
 Temperature: 25.3°C
 Operators: DAMIN
 Test Date: 2026-02-03

γ Range: 0 - 90DEG
 γ Interval: 5.0DEG
 Test System: EVERFINE GO-2000B_V1 SYSTEM V2.00.488
 Humidity: 65.0%
 Test Distance: 6.144m [K=1.0000]
 Remarks:

