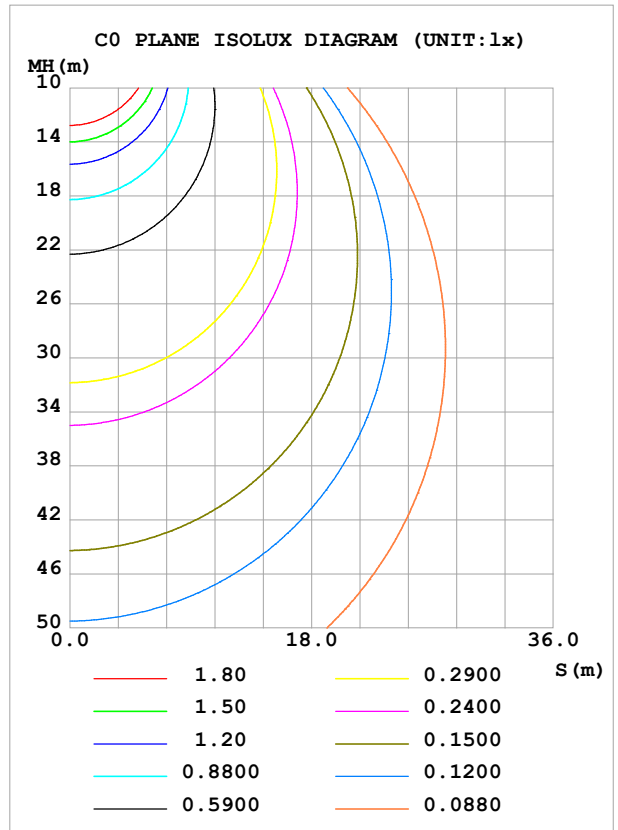
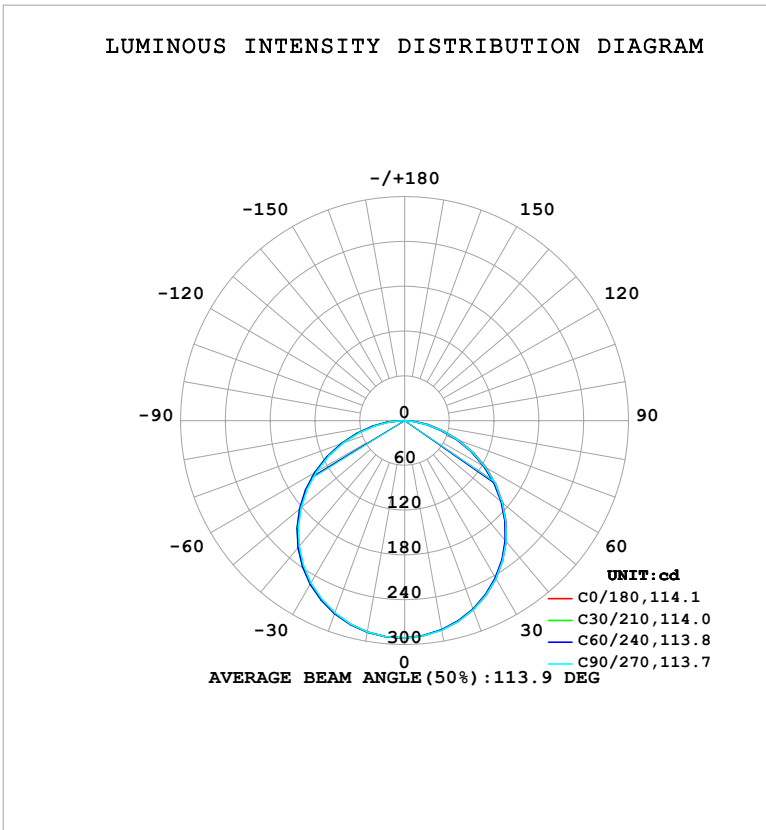


**LUMINAIRE PHOTOMETRIC TEST REPORT**

Test:U:121.03V I:0.1645A P:18.476W PF:0.9283 Freq:60.00Hz Lamp Flux:850.305x1 lm		
NAME: LS-AL-9TL-18W-5CCT-BL	TYPE:	WEIGHT:
SPEC.:	DIM.:	SERIAL No.: 1#27K
MFR.: YOURZOR	SUR.: 0.199	Shielding Angle:

DATA OF LAMP		PHOTOMETRIC DATA				Eff: 46.02 lm/W
MODES-AL-9TL-18W-5CCT-BL-27K		Imax (cd)	291.1	S/MH (C0/180)		1.29
NOMINAL POWER (W)	18	LOR (%)	100.0	S/MH (C90/270)		1.28
RATED VOLTAGE (V)	120	TOTAL FLUX (lm)	850.31	$\eta$ UP, DN (C0-180)		0.0,48.6
NOMINAL FLUX (lm)	850.305	CIE CLASS	DIRECT	$\eta$ UP, DN (C180-360)		0.0,51.4
LAMPS INSIDE	1	$\eta$ up (%)	0.0	CIBSE SHR NOM		1.25
TEST VOLTAGE (V)	120	$\eta$ down (%)	100.0	CIBSE SHR MAX		1.35



C Range: 0 - 360DEG  
 C Interval: 30.0DEG  
 Test Speed: HIGH  
 Temperature: 25.3°C  
 Operators: DAMIN  
 Test Date: 2026-02-04

$\gamma$  Range: 0 - 90DEG  
 $\gamma$  Interval: 5.0DEG  
 Test System: EVERFINE GO-2000B\_V1 SYSTEM V2.00.488  
 Humidity: 65.0%  
 Test Distance: 6.144m [K=1.0000]  
 Remarks:

ZONAL FLUX DIAGRAM

ZONAL FLUX DIAGRAM:

$\gamma$	C0	C45	C90	C135	C180	C225	C270	C315	$\gamma$	$\Phi$ zone	$\Phi$ total	%lum,lamp
10	285.0	284.6	285.1	286.2	287.5	287.9	287.3	286.4	0- 10	27.56	27.56	3.24,3.24
20	269.5	268.6	269.4	271.6	274.4	275.0	273.8	272.1	10- 20	79.10	106.7	12.5,12.5
30	244.9	243.4	244.7	247.9	252.0	252.9	251.2	248.6	20- 30	120.3	227.0	26.7,26.7
40	211.7	209.8	211.5	215.5	220.9	222.1	219.8	216.5	30- 40	145.8	372.8	43.8,43.8
50	171.5	169.1	171.0	175.9	182.3	183.8	181.1	177.2	40- 50	152.0	524.8	61.7,61.7
60	125.8	123.0	125.0	130.5	137.7	139.3	136.4	132.0	50- 60	138.0	662.8	77.9,77.9
70	77.47	74.30	75.93	81.97	89.55	90.84	87.43	83.48	60- 70	105.9	768.7	90.4,90.4
80	31.88	28.96	30.02	35.73	42.49	43.53	40.32	36.99	70- 80	62.39	831.1	97.7,97.7
90	0.7081	0.7074	0.7053	0.7810	2.830	4.600	3.676	1.254	80- 90	19.21	850.3	100,100
100									90-100			
110									100-110			
120									110-120			
130									120-130			
140									130-140			
150									140-150			
160									150-160			
170									160-170			
180									170-180			
DEG	LUMINOUS INTENSITY:cd									UNIT:lm		

Conical surface Flux(90deg): 449.28 lm

%lum = 52.8%

%lamp = 52.8%

Conical surface Flux(130deg): 720.68 lm

%lum = 84.8%

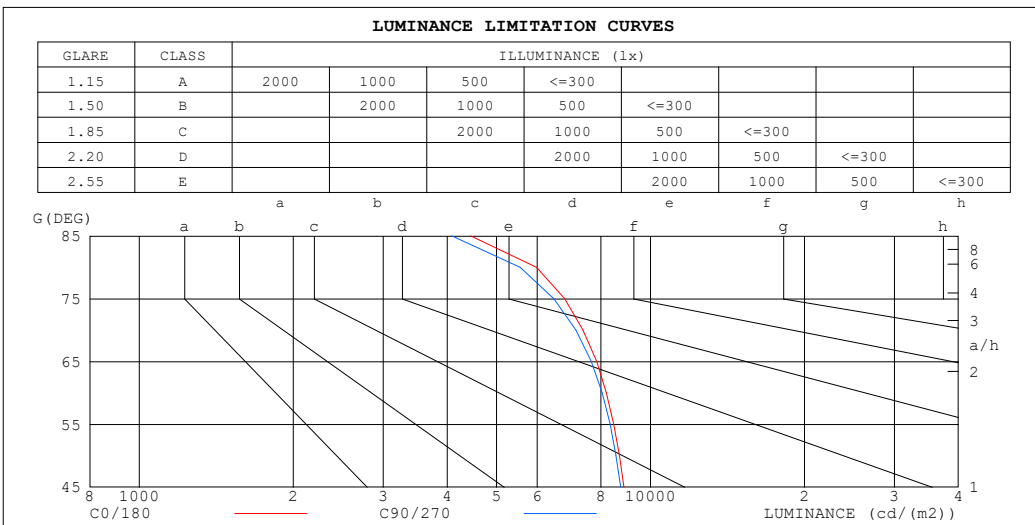
%lamp = 84.8%

C Range: 0 - 360DEG  
 C Interval: 30.0DEG  
 Test Speed: HIGH  
 Temperature:25.3°C  
 Operators:DAMIN  
 Test Date:2026-02-04

$\gamma$  Range: 0 - 90DEG  
 $\gamma$  Interval: 5.0DEG  
 Test System:EVERFINE GO-2000B\_V1 SYSTEM V2.00.488  
 Humidity:65.0%  
 Test Distance:6.144m [K=1.0000]  
 Remarks:

**LUMINANCE LIMITATION CURVES**

Test:U:121.03V I:0.1645A P:18.476W PF:0.9283 Freq:60.00Hz Lamp Flux:850.305x1 lm		
NAME: LS-AL-9TL-18W-5CCT-BL	TYPE:	WEIGHT:
SPEC.:	DIM.:	SERIAL No.: 1#27K
MFR.: YOURZOR	SUR.: 0.199	Shielding Angle:



LUMINANCE cd/(m2)		
G (DEG)	C0/180	C90/270
85	4452	4091
80	5980	5563
75	6797	6473
70	7378	7144
65	7842	7654
60	8197	8047
55	8473	8338
50	8690	8561
45	8866	8740

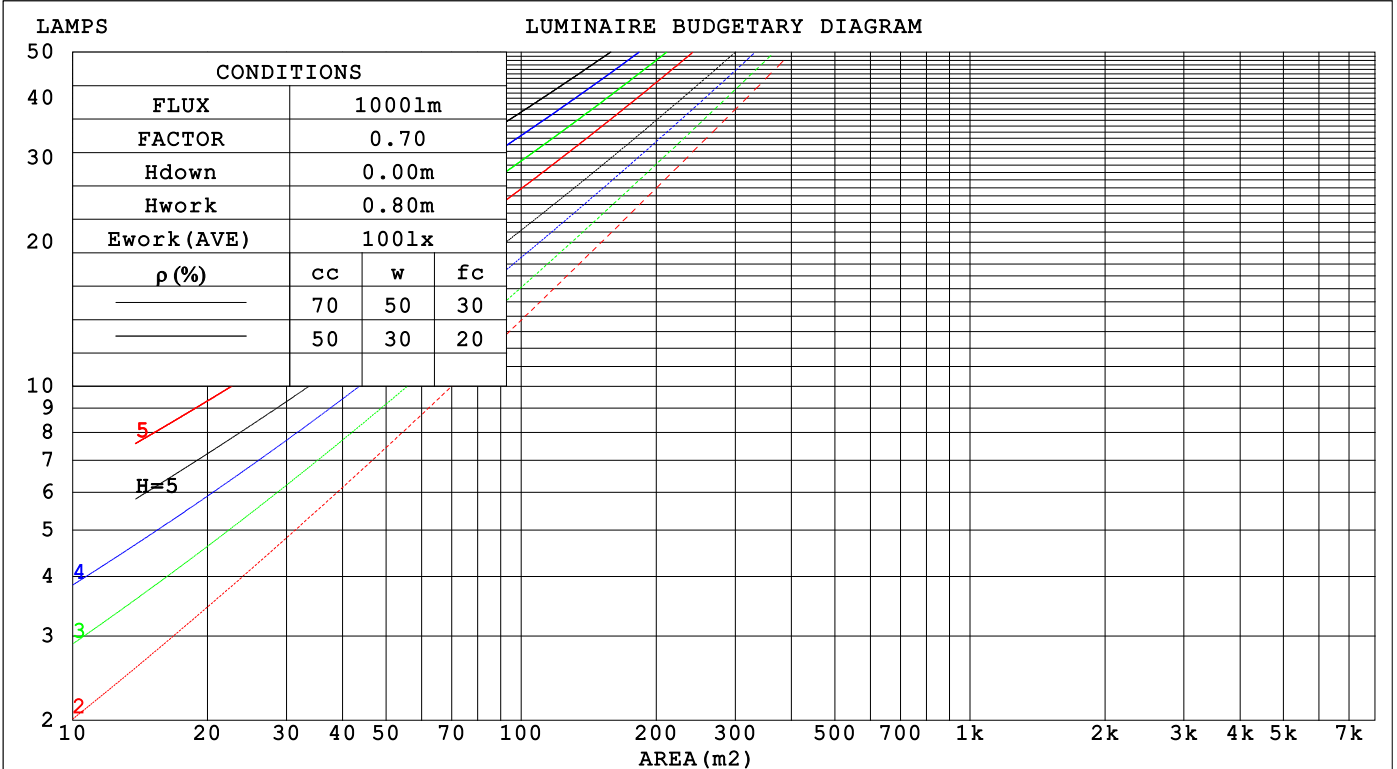
C Range: 0 - 360DEG  
 C Interval: 30.0DEG  
 Test Speed: HIGH  
 Temperature:25.3°C  
 Operators:DAMIN  
 Test Date:2026-02-04

γ Range: 0 - 90DEG  
 γ Interval: 5.0DEG  
 Test System:EVERFINE GO-2000B\_V1 SYSTEM V2.00.488  
 Humidity:65.0%  
 Test Distance:6.144m [K=1.0000]  
 Remarks:

**CU AND LUMINAIRE BUDGETARY ESTIMATE DIAGRAM**

Test:U:121.03V I:0.1645A P:18.476W PF:0.9283 Freq:60.00Hz Lamp Flux:850.305x1 lm		
NAME: LS-AL-9TL-18W-5CCT-BL	TYPE:	WEIGHT:
SPEC.:	DIM.:	SERIAL No.: 1#27K
MFR.: YOURZOR	SUR.: 0.199	Shielding Angle:

ρcc	80%			70%			50%			30%			10%			0
	ρw	50%	30%	10%	50%	30%	10%	50%	30%	10%	50%	30%	10%	50%	30%	10%
ρfc	20%			20%			20%			20%			20%			0
RCR	RCR:Room Cavity Ratio															
	Coefficients of Utilization(CU)															
0.0	1.19	1.19	1.19	1.16	1.16	1.16	1.11	1.11	1.11	1.06	1.06	1.06	1.02	1.02	1.02	1.00
1.0	1.04	.99	.95	1.01	.97	.94	.97	.94	.91	.93	.90	.88	.89	.87	.85	.83
2.0	.90	.83	.77	.88	.82	.76	.85	.79	.74	.81	.77	.73	.78	.74	.71	.69
3.0	.79	.71	.64	.77	.70	.63	.74	.68	.62	.72	.66	.61	.69	.64	.60	.58
4.0	.70	.61	.54	.68	.60	.54	.66	.59	.53	.64	.57	.52	.61	.56	.51	.49
5.0	.62	.53	.46	.61	.53	.46	.59	.51	.46	.57	.50	.45	.55	.49	.45	.42
6.0	.56	.47	.40	.55	.46	.40	.53	.46	.40	.52	.45	.40	.50	.44	.39	.37
7.0	.51	.42	.36	.50	.42	.36	.48	.41	.35	.47	.40	.35	.46	.39	.35	.33
8.0	.46	.38	.32	.46	.37	.32	.44	.37	.31	.43	.36	.31	.42	.36	.31	.29
9.0	.42	.34	.29	.42	.34	.28	.41	.33	.28	.40	.33	.28	.39	.32	.28	.26
10.0	.39	.31	.26	.39	.31	.26	.38	.31	.26	.37	.30	.26	.36	.30	.25	.24



C Range: 0 - 360DEG  
 C Interval: 30.0DEG  
 Test Speed: HIGH  
 Temperature:25.3°C  
 Operators:DAMIN  
 Test Date:2026-02-04

γ Range: 0 - 90DEG  
 γ Interval: 5.0DEG  
 Test System:EVERFINE GO-2000B\_V1 SYSTEM V2.00.488  
 Humidity:65.0%  
 Test Distance:6.144m [K=1.0000]  
 Remarks:

**WEC AND CCEC**

Test:U:121.03V I:0.1645A P:18.476W PF:0.9283 Freq:60.00Hz Lamp Flux:850.305x1 lm		
NAME: LS-AL-9TL-18W-5CCT-BL	TYPE:	WEIGHT:
SPEC.:	DIM.:	SERIAL No.: 1#27K
MFR.: YOURZOR	SUR.: 0.199	Shielding Angle:

$\rho_{CC}$	80%			70%			50%			30%			10%			0
$\rho_w$	50%	30%	10%	50%	30%	10%	50%	30%	10%	50%	30%	10%	50%	30%	10%	0
$\rho_{fc}$	20%			20%			20%			20%			20%			0
RCR	RCR:Room Cavity Ratio						Wall Exitance Coefficients (WEC)									
0.0																
1.0	.316	.180	.057	.309	.176	.056	.296	.170	.054	.283	.163	.052	.272	.158	.051	
2.0	.296	.162	.050	.290	.159	.049	.278	.154	.048	.267	.150	.047	.257	.145	.046	
3.0	.273	.145	.044	.267	.143	.043	.257	.139	.042	.247	.136	.042	.239	.132	.041	
4.0	.251	.131	.038	.247	.129	.038	.237	.126	.038	.229	.123	.037	.221	.120	.037	
5.0	.232	.118	.034	.228	.117	.034	.220	.114	.034	.212	.112	.033	.205	.109	.033	
6.0	.215	.108	.031	.211	.107	.031	.204	.105	.030	.197	.102	.030	.191	.100	.030	
7.0	.200	.099	.028	.197	.098	.028	.190	.096	.028	.184	.094	.027	.178	.093	.027	
8.0	.187	.091	.026	.184	.090	.026	.178	.089	.025	.172	.087	.025	.167	.086	.025	
9.0	.175	.085	.024	.172	.084	.024	.167	.083	.023	.162	.081	.023	.157	.080	.023	
10.0	.164	.079	.022	.162	.078	.022	.157	.077	.022	.153	.076	.022	.149	.075	.021	

$\rho_{CC}$	80%			70%			50%			30%			10%			0
$\rho_w$	50%	30%	10%	50%	30%	10%	50%	30%	10%	50%	30%	10%	50%	30%	10%	0
$\rho_{fc}$	20%			20%			20%			20%			20%			0
RCR	RCR:Room Cavity Ratio						Ceiling Cavity Exitance Coefficients (CCEC)									
0.0	.190	.190	.190	.163	.163	.163	.111	.111	.111	.064	.064	.064	.020	.020	.020	
1.0	.181	.156	.134	.155	.134	.115	.106	.092	.080	.061	.053	.046	.020	.017	.015	
2.0	.173	.132	.098	.148	.114	.084	.101	.079	.059	.058	.046	.034	.019	.015	.011	
3.0	.165	.114	.074	.142	.099	.064	.097	.069	.045	.056	.040	.026	.018	.013	.009	
4.0	.157	.101	.058	.135	.087	.050	.093	.061	.035	.054	.036	.021	.017	.012	.007	
5.0	.150	.091	.047	.129	.078	.041	.089	.055	.029	.051	.032	.017	.017	.010	.006	
6.0	.143	.082	.039	.123	.071	.034	.085	.050	.024	.049	.029	.014	.016	.010	.005	
7.0	.136	.075	.033	.117	.065	.029	.081	.046	.020	.047	.027	.012	.015	.009	.004	
8.0	.129	.070	.029	.111	.060	.025	.077	.042	.018	.045	.025	.011	.015	.008	.003	
9.0	.123	.065	.025	.106	.056	.022	.074	.039	.016	.043	.023	.009	.014	.008	.003	
10.0	.118	.060	.022	.101	.052	.019	.070	.037	.014	.041	.022	.008	.013	.007	.003	

C Range: 0 - 360DEG  
 C Interval: 30.0DEG  
 Test Speed: HIGH  
 Temperature:25.3°C  
 Operators:DAMIN  
 Test Date:2026-02-04

$\gamma$  Range: 0 - 90DEG  
 $\gamma$  Interval: 5.0DEG  
 Test System:EVERFINE GO-2000B\_V1 SYSTEM V2.00.488  
 Humidity:65.0%  
 Test Distance:6.144m [K=1.0000]  
 Remarks:

**UGR(Unified Glare Rating) Table**

Test:U:121.03V I:0.1645A P:18.476W PF:0.9283 Freq:60.00Hz										
Lamp Flux:850.305x1 lm										
NAME: LS-AL-9TL-18W-5CCT-BL					TYPE:			WEIGHT:		
SPEC.:					DIM.:			SERIAL No.: 1#27K		
MFR.: YOURZOR					SUR.: 0.199			Shielding Angle:		
ceiling/cavity	0.7	0.7	0.5	0.5	0.3	0.7	0.7	0.5	0.5	0.3
walls	0.5	0.3	0.5	0.3	0.3	0.5	0.3	0.5	0.3	0.3
working plane	0.2	0.2	0.2	0.2	0.2	0.2	0.2	0.2	0.2	0.2
Room dimensions	Viewed crosswise					Viewed endwise				
x = 2H y = 2H	20.7	22.2	21.0	22.4	22.6	20.6	22.1	20.9	22.3	22.5
3H	22.1	23.6	22.4	23.8	24.0	22.0	23.4	22.3	23.7	23.9
4H	22.7	24.1	23.0	24.3	24.6	22.6	23.9	22.9	24.2	24.4
6H	23.1	24.4	23.4	24.6	24.9	22.9	24.2	23.2	24.4	24.7
8H	23.1	24.4	23.5	24.7	25.0	22.9	24.2	23.3	24.4	24.7
12H	23.2	24.4	23.5	24.7	25.0	23.0	24.1	23.3	24.4	24.7
4H 2H	21.2	22.6	21.6	22.8	23.1	21.2	22.5	21.5	22.8	23.0
3H	22.9	24.1	23.2	24.4	24.7	22.8	23.9	23.1	24.2	24.5
4H	23.6	24.6	23.9	25.0	25.3	23.4	24.5	23.8	24.8	25.1
6H	24.0	25.0	24.4	25.4	25.7	23.8	24.8	24.2	25.2	25.5
8H	24.1	25.0	24.5	25.4	25.8	23.9	24.8	24.3	25.2	25.6
12H	24.2	25.0	24.6	25.4	25.8	24.0	24.8	24.4	25.2	25.6
8H 4H	23.8	24.7	24.2	25.0	25.4	23.6	24.5	24.0	24.9	25.3
6H	24.3	25.1	24.8	25.5	25.9	24.2	24.9	24.6	25.3	25.7
8H	24.5	25.1	24.9	25.6	26.0	24.3	24.9	24.7	25.4	25.8
12H	24.6	25.2	25.1	25.6	26.1	24.4	24.9	24.8	25.4	25.9
12H 4H	23.8	24.6	24.2	25.0	25.4	23.6	24.5	24.1	24.8	25.2
6H	24.4	25.0	24.8	25.4	25.9	24.2	24.8	24.6	25.3	25.7
8H	24.5	25.1	25.0	25.5	26.0	24.3	24.9	24.8	25.3	25.8
Variations with the observer position at spacings(CIE Pub.117):										
S = 1.0H	+ 0.1 / - 0.2					+ 0.1 / - 0.2				
1.5H	+ 0.1 / - 0.3					+ 0.1 / - 0.3				
2.0H	+ 0.3 / - 0.3					+ 0.3 / - 0.3				

CIE Pub.117, 850.3 lm Total Lamp Luminous Flux Correct (8log(F/F0) = -0.6)  
 Area: 0.031 m2

C Range: 0 - 360DEG  
 C Interval: 30.0DEG  
 Test Speed: HIGH  
 Temperature:25.3°C  
 Operators:DAMIN  
 Test Date:2026-02-04

γ Range: 0 - 90DEG  
 γ Interval: 5.0DEG  
 Test System:EVERFINE GO-2000B\_V1 SYSTEM V2.00.488  
 Humidity:65.0%  
 Test Distance:6.144m [K=1.0000]  
 Remarks:

**UTILIZATION FACTORS TABLE**

Test:U:121.03V I:0.1645A P:18.476W PF:0.9283 Freq:60.00Hz Lamp Flux:850.305x1 lm		
NAME: LS-AL-9TL-18W-5CCT-BL	TYPE:	WEIGHT:
SPEC.:	DIM.:	SERIAL No.: 1#27K
MFR.: YOURZOR	SUR.: 0.199	Shielding Angle:

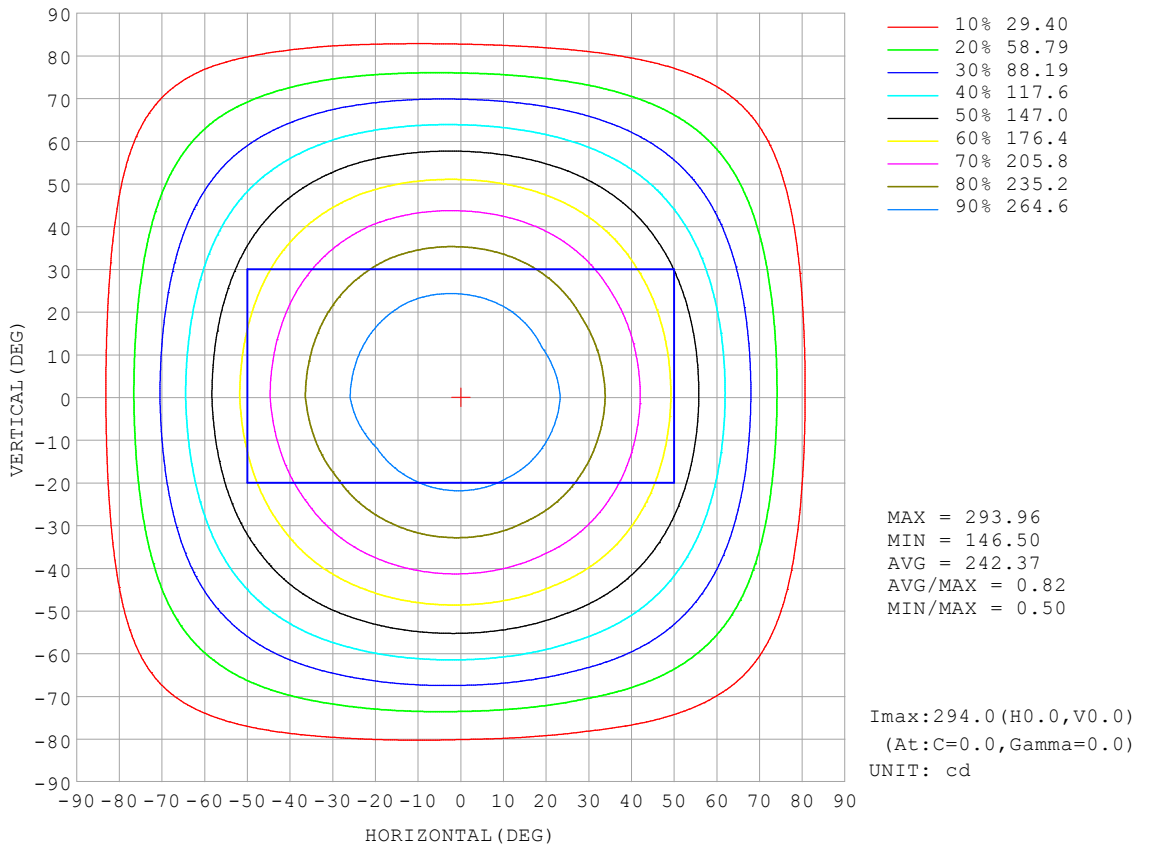
REFLECTANCE										
Ceiling	0.8	0.8	0.8	0.7	0.7	0.7	0.5	0.5	0.5	0
Walls	0.7	0.5	0.3	0.7	0.5	0.3	0.7	0.5	0.3	0
Working plane	0.2	0.2	0.2	0.2	0.2	0.2	0.2	0.2	0.2	0
ROOM INDEX	UTILIZATION FACTORS (PERCENT) $k(RI) \times RCR = 5$									
k = 0.60	57	45	38	56	45	38	55	45	38	32
0.80	67	55	48	66	55	48	64	54	47	40
1.00	76	64	57	74	64	57	72	65	56	49
1.25	83	72	65	81	71	64	78	70	64	56
1.50	88	78	71	86	77	70	83	75	69	61
2.00	95	86	79	93	85	79	89	82	77	69
2.50	99	91	84	96	89	84	93	87	82	73
3.00	102	95	89	100	93	88	96	90	86	77
4.00	106	100	95	104	98	94	99	95	91	82
5.00	108	103	99	106	102	98	101	98	95	85
ROOM INDEX	UF(total)									Direct
According to DIN EN 13032-2 2004			Suspended				SHRNOM = 1.25			

C Range: 0 - 360DEG  
 C Interval: 30.0DEG  
 Test Speed: HIGH  
 Temperature:25.3°C  
 Operators:DAMIN  
 Test Date:2026-02-04

$\gamma$  Range: 0 - 90DEG  
 $\gamma$  Interval: 5.0DEG  
 Test System:EVERFINE GO-2000B\_V1 SYSTEM V2.00.488  
 Humidity:65.0%  
 Test Distance:6.144m [K=1.0000]  
 Remarks:

**ISOCANDELA DIAGRAM**

Test:U:121.03V I:0.1645A P:18.476W PF:0.9283 Freq:60.00Hz Lamp Flux:850.305x1 lm		
NAME: LS-AL-9TL-18W-5CCT-BL	TYPE:	WEIGHT:
SPEC.:	DIM.:	SERIAL No.: 1#27K
MFR.: YOURZOR	SUR.: 0.199	Shielding Angle:

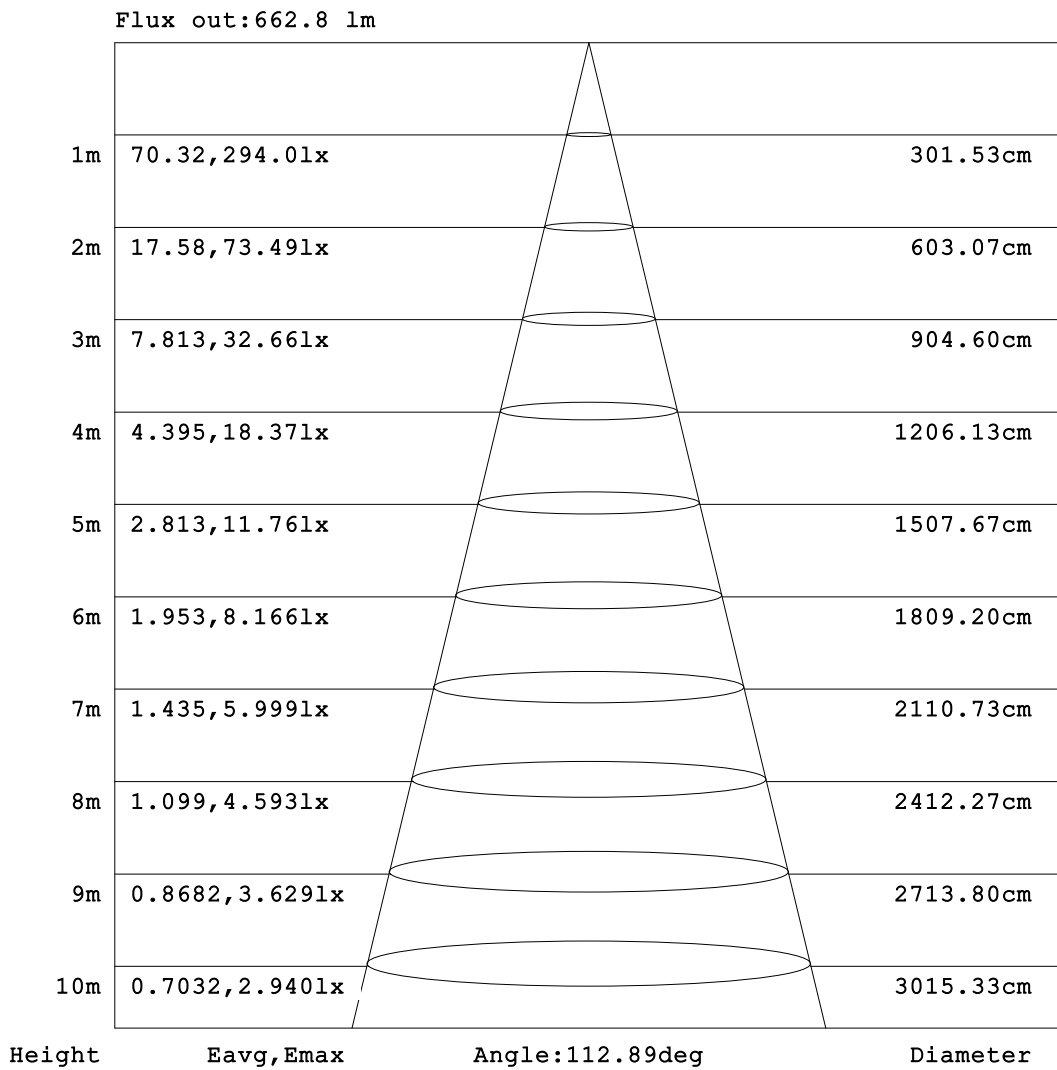


C Range: 0 - 360DEG  
 C Interval: 30.0DEG  
 Test Speed: HIGH  
 Temperature:25.3°C  
 Operators:DAMIN  
 Test Date:2026-02-04

γ Range: 0 - 90DEG  
 γ Interval: 5.0DEG  
 Test System:EVERFINE GO-2000B\_V1 SYSTEM V2.00.488  
 Humidity:65.0%  
 Test Distance:6.144m [K=1.0000]  
 Remarks:

**AAI Figure**

Test:U:121.03V I:0.1645A P:18.476W PF:0.9283 Freq:60.00Hz Lamp Flux:850.305x1 lm		
NAME: LS-AL-9TL-18W-5CCT-BL	TYPE:	WEIGHT:
SPEC.:	DIM.:	SERIAL No.: 1#27K
MFR.: YOURZOR	SUR.: 0.199	Shielding Angle:



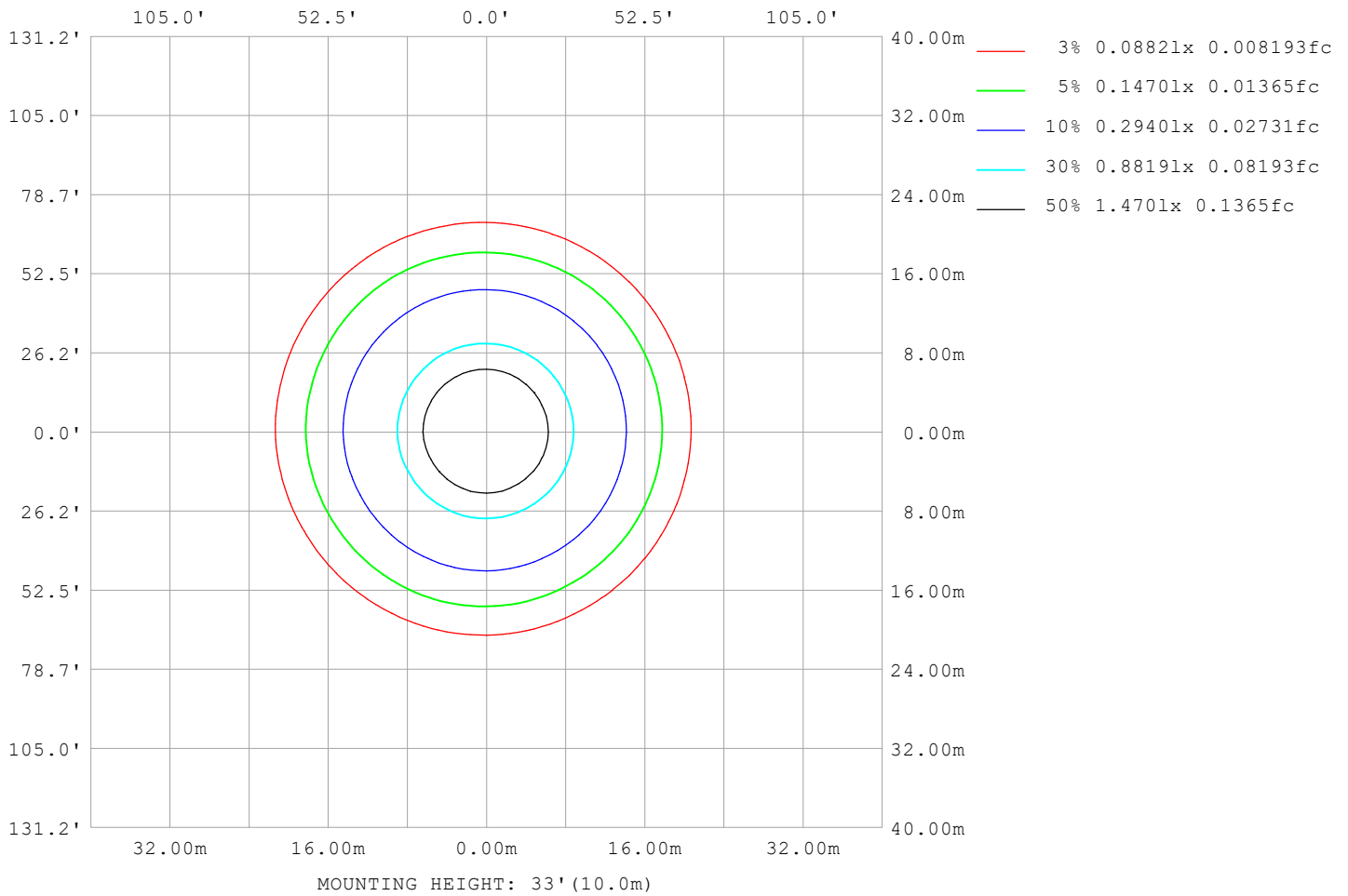
Note: The Curves indicate the illuminated area and the average illumination when the luminaire is at different distance.

C Range: 0 - 360DEG  
C Interval: 30.0DEG  
Test Speed: HIGH  
Temperature: 25.3°C  
Operators: DAMIN  
Test Date: 2026-02-04

γ Range: 0 - 90DEG  
γ Interval: 5.0DEG  
Test System: EVERFINE GO-2000B\_V1 SYSTEM V2.00.488  
Humidity: 65.0%  
Test Distance: 6.144m [K=1.0000]  
Remarks:

**ISOLUX DIAGRAM**

Test:U:121.03V I:0.1645A P:18.476W PF:0.9283 Freq:60.00Hz Lamp Flux:850.305x1 lm		
NAME: LS-AL-9TL-18W-5CCT-BL	TYPE:	WEIGHT:
SPEC.:	DIM.:	SERIAL No.: 1#27K
MFR.: YOURZOR	SUR.: 0.199	Shielding Angle:



C Range: 0 - 360DEG  
 C Interval: 30.0DEG  
 Test Speed: HIGH  
 Temperature:25.3°C  
 Operators:DAMIN  
 Test Date:2026-02-04

γ Range: 0 - 90DEG  
 γ Interval: 5.0DEG  
 Test System:EVERFINE GO-2000B\_V1 SYSTEM V2.00.488  
 Humidity:65.0%  
 Test Distance:6.144m [K=1.0000]  
 Remarks:

**LED Avg.L Report**

Test:U:121.03V I:0.1645A P:18.476W PF:0.9283 Freq:60.00Hz Lamp Flux:850.305x1 lm		
NAME: LS-AL-9TL-18W-5CCT-BL	TYPE:	WEIGHT:
SPEC.:	DIM.:	SERIAL No.: 1#27K
MFR.: YOURZOR	SUR.: 0.199	Shielding Angle:

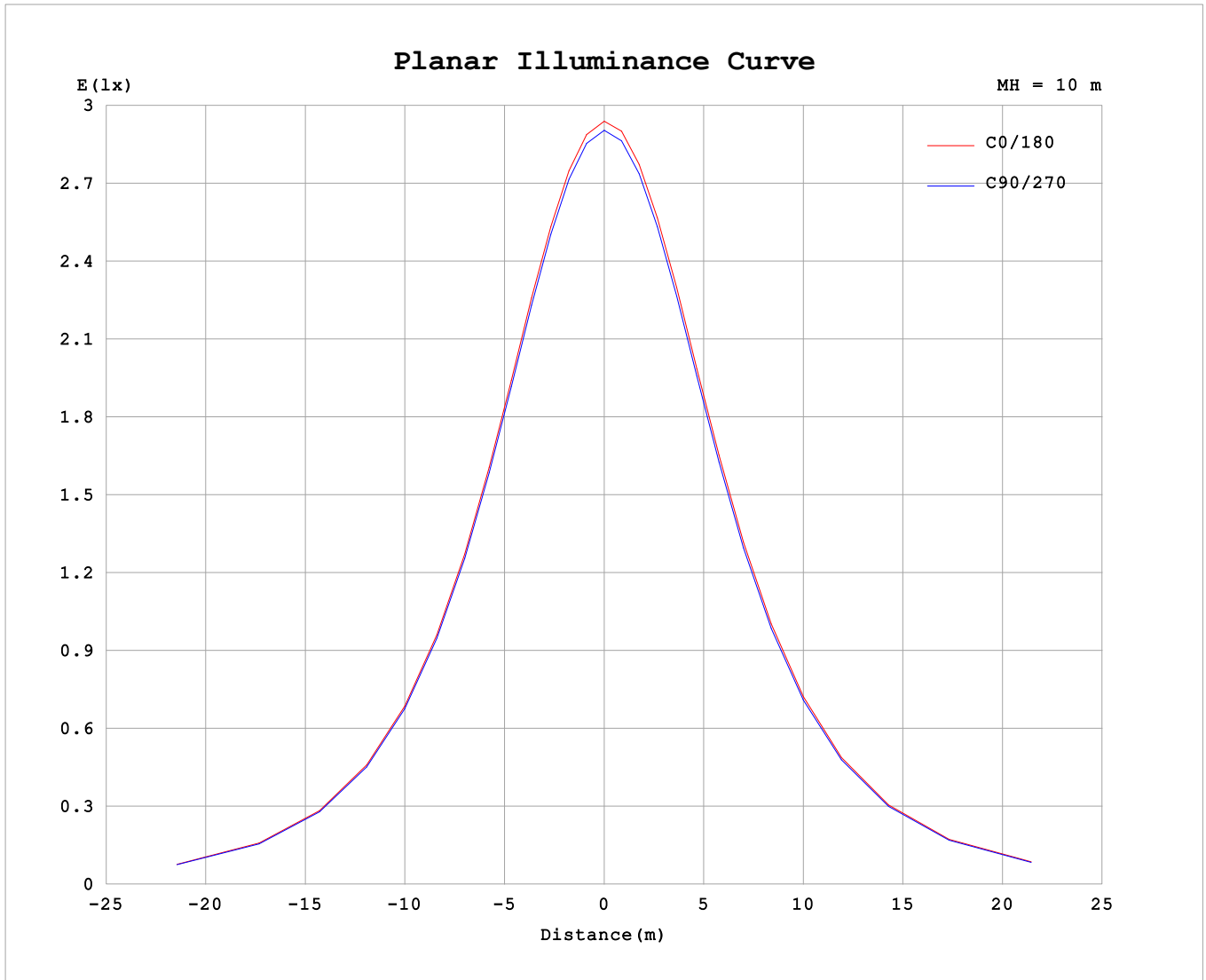
AvgL	cd/m2
L_0~180 (65) av	8226
L_0~180 (75) av	7449
L_0~180 (85) av	6130
L_90~270 (65) av	8117
L_90~270 (75) av	7189
L_90~270 (85) av	5805
L_45 (65) av	8170
L_45 (75) av	7329
L_45 (85) av	6013

Standard: GB/T 29293-2012

C Range: 0 - 360DEG  
 C Interval: 30.0DEG  
 Test Speed: HIGH  
 Temperature:25.3°C  
 Operators:DAMIN  
 Test Date:2026-02-04

γ Range: 0 - 90DEG  
 γ Interval: 5.0DEG  
 Test System:EVERFINE GO-2000B\_V1 SYSTEM V2.00.488  
 Humidity:65.0%  
 Test Distance:6.144m [K=1.0000]  
 Remarks:

**Planar Illuminance Curve**



C Range: 0 - 360DEG  
 C Interval: 30.0DEG  
 Test Speed: HIGH  
 Temperature: 25.3°C  
 Operators: DAMIN  
 Test Date: 2026-02-04

γ Range: 0 - 90DEG  
 γ Interval: 5.0DEG  
 Test System: EVERFINE GO-2000B\_V1 SYSTEM V2.00.488  
 Humidity: 65.0%  
 Test Distance: 6.144m [K=1.0000]  
 Remarks:

