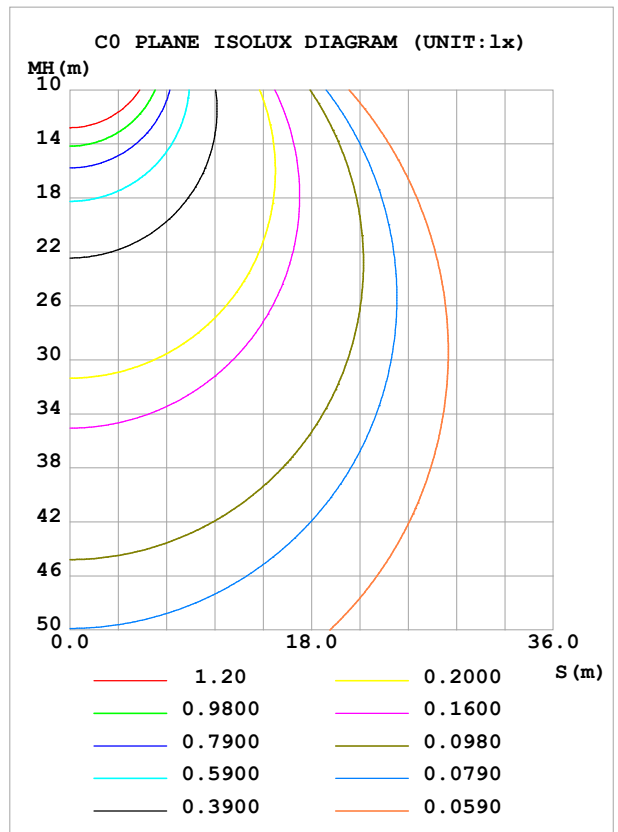
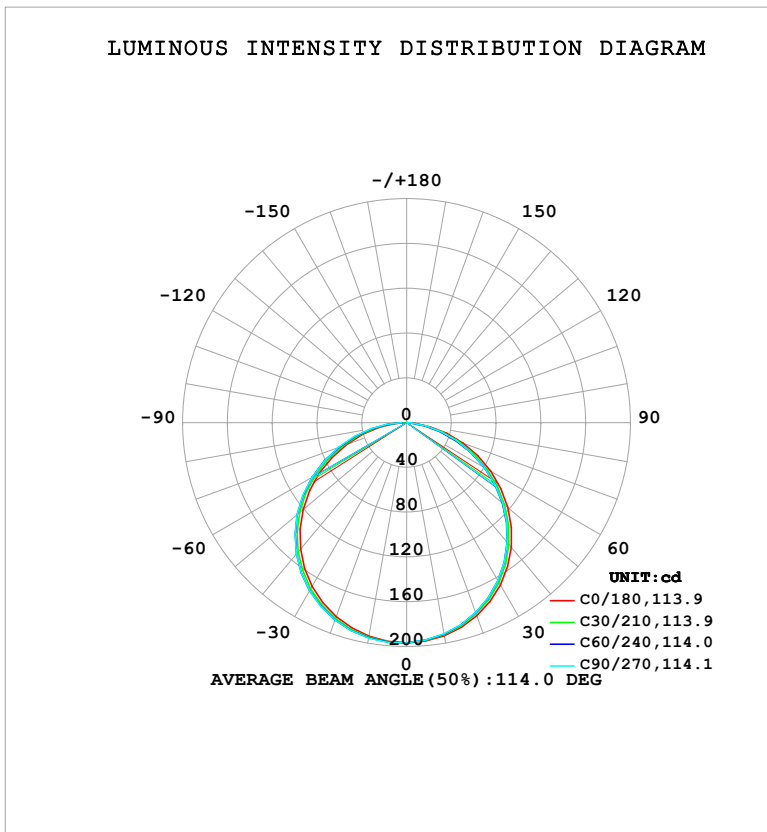


LUMINAIRE PHOTOMETRIC TEST REPORT

Test:U:121.01V I:0.1084A P:12.197W PF:0.9299 Freq:60.00Hz Lamp Flux:575.047x1 lm		
NAME: LS-AL-7TL-12W-5CCT-G	TYPE:	WEIGHT:
SPEC.:	DIM.:	SERIAL No.: 1#30K
MFR.: YOURZOR	SUR.: 0.154	Shielding Angle:

DATA OF LAMP		PHOTOMETRIC DATA				Eff: 47.15 lm/W
MODELS-AL-7TL-12W-5CCT-G-30K		I _{max} (cd)	196.8	S/MH (C0/180)		1.28
NOMINAL POWER (W)	12	LOR (%)	100.0	S/MH (C90/270)		1.31
RATED VOLTAGE (V)	120	TOTAL FLUX (lm)	575.05	η UP, DN (C0-180)		0.0,47.5
NOMINAL FLUX (lm)	575.047	CIE CLASS	DIRECT	η UP, DN (C180-360)		0.0,52.5
LAMPS INSIDE	1	η up (%)	0.0	CIBSE SHR NOM		1.25
TEST VOLTAGE (V)	120	η down (%)	100.0	CIBSE SHR MAX		1.35



C Range: 0 - 360DEG
 C Interval: 30.0DEG
 Test Speed: HIGH
 Temperature: 25.3°C
 Operators: DAMIN
 Test Date: 2026-02-04

γ Range: 0 - 90DEG
 γ Interval: 5.0DEG
 Test System: EVERFINE GO-2000B_V1 SYSTEM V2.00.488
 Humidity: 65.0%
 Test Distance: 6.144m [K=1.0000]
 Remarks:

ZONAL FLUX DIAGRAM

ZONAL FLUX DIAGRAM:

γ	C0	C45	C90	C135	C180	C225	C270	C315	γ	Φ zone	Φ total	%lum,lamp
10	193.2	192.1	191.8	192.3	193.7	194.9	195.3	194.7	0- 10	18.62	18.62	3.24,3.24
20	183.5	181.2	180.6	181.7	184.4	186.8	187.5	186.3	10- 20	53.51	72.13	12.5,12.5
30	167.5	164.1	163.2	165.0	169.0	172.4	173.4	171.6	20- 30	81.53	153.7	26.7,26.7
40	145.4	141.0	140.0	142.4	147.5	151.9	153.3	150.8	30- 40	98.89	252.6	43.9,43.9
50	118.1	113.1	112.0	114.9	120.8	126.1	127.6	124.7	40- 50	103.1	355.6	61.8,61.8
60	86.89	81.31	80.37	83.69	90.12	95.81	97.54	94.20	50- 60	93.46	449.1	78.1,78.1
70	53.52	48.03	47.51	50.89	56.99	62.70	64.79	61.28	60- 70	71.57	520.7	90.5,90.5
80	21.42	17.19	17.17	20.20	25.35	30.29	32.32	28.53	70- 80	41.88	562.5	97.8,97.8
90	0.3814	0.4180	0.4300	0.4024	0.5153	3.325	4.452	1.881	80- 90	12.50	575.0	100,100
100									90-100			
110									100-110			
120									110-120			
130									120-130			
140									130-140			
150									140-150			
160									150-160			
170									160-170			
180									170-180			
DEG	LUMINOUS INTENSITY:cd									UNIT:lm		

Conical surface Flux(90deg): 304.44 lm

%lum = 52.9%

%lamp = 52.9%

Conical surface Flux(130deg): 488.25 lm

%lum = 84.9%

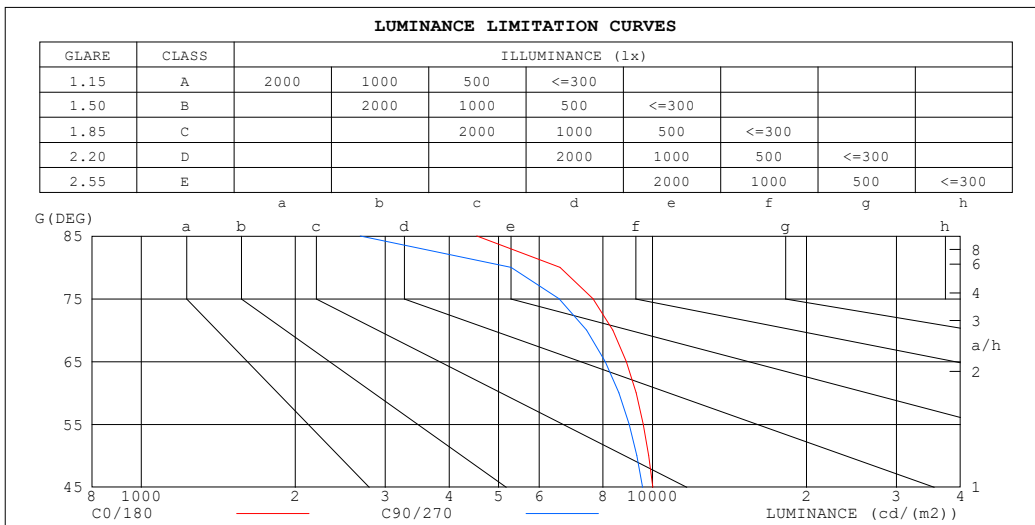
%lamp = 84.9%

C Range: 0 - 360DEG
 C Interval: 30.0DEG
 Test Speed: HIGH
 Temperature:25.3°C
 Operators:DAMIN
 Test Date:2026-02-04

γ Range: 0 - 90DEG
 γ Interval: 5.0DEG
 Test System:EVERFINE GO-2000B_V1 SYSTEM V2.00.488
 Humidity:65.0%
 Test Distance:6.144m [K=1.0000]
 Remarks:

LUMINANCE LIMITATION CURVES

Test:U:121.01V I:0.1084A P:12.197W PF:0.9299 Freq:60.00Hz Lamp Flux:575.047x1 lm		
NAME: LS-AL-7TL-12W-5CCT-G	TYPE:	WEIGHT:
SPEC.:	DIM.:	SERIAL No.: 1#30K
MFR.: YOURZOR	SUR.: 0.154	Shielding Angle:



LUMINANCE cd/(m2)		
G (DEG)	C0/180	C90/270
85	4533	2678
80	6594	5287
75	7644	6563
70	8366	7427
65	8889	8078
60	9290	8595
55	9589	8995
50	9824	9314
45	10008	9568

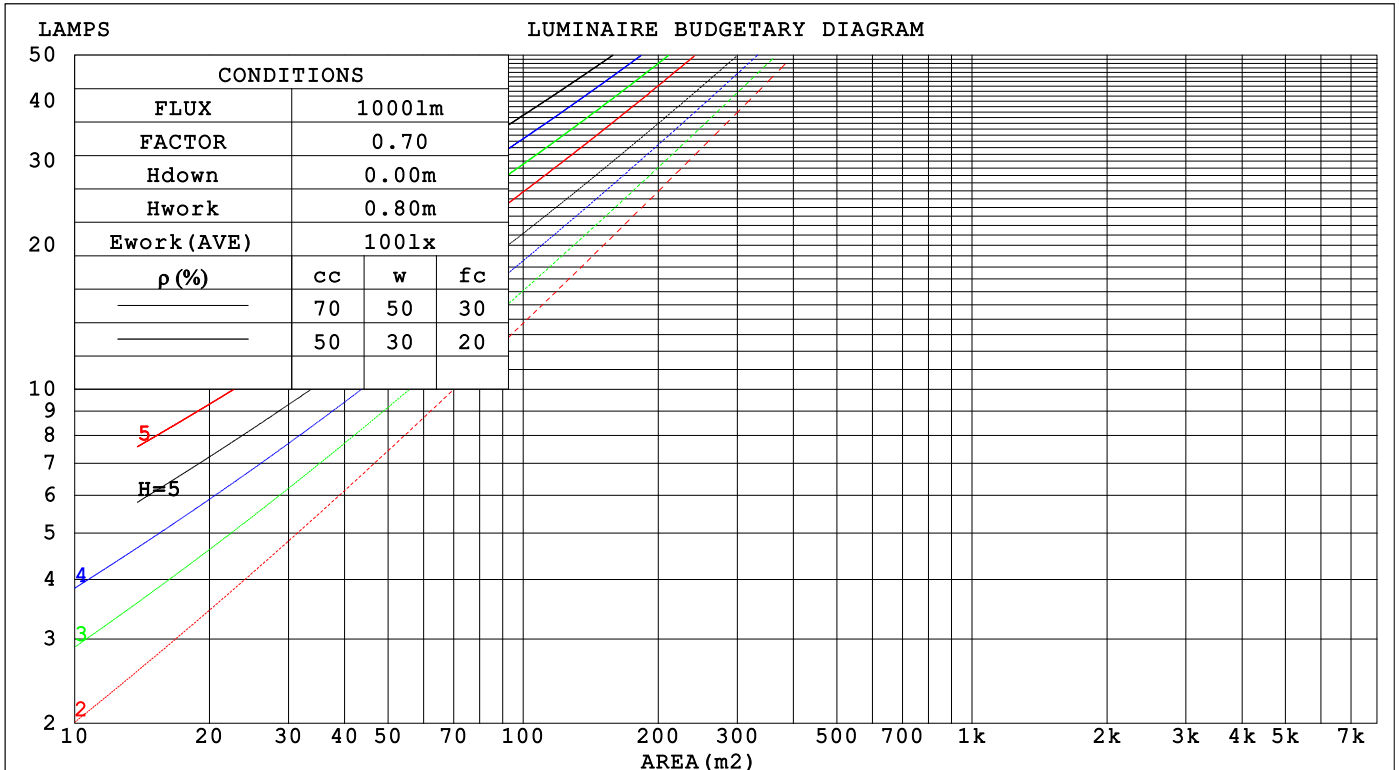
C Range: 0 - 360DEG
 C Interval: 30.0DEG
 Test Speed: HIGH
 Temperature:25.3°C
 Operators:DAMIN
 Test Date:2026-02-04

γ Range: 0 - 90DEG
 γ Interval: 5.0DEG
 Test System:EVERFINE GO-2000B_V1 SYSTEM V2.00.488
 Humidity:65.0%
 Test Distance:6.144m [K=1.0000]
 Remarks:

CU AND LUMINAIRE BUDGETARY ESTIMATE DIAGRAM

Test:U:121.01V I:0.1084A P:12.197W PF:0.9299 Freq:60.00Hz Lamp Flux:575.047x1 lm		
NAME: LS-AL-7TL-12W-5CCT-G	TYPE:	WEIGHT:
SPEC.:	DIM.:	SERIAL No.: 1#30K
MFR.: YOURZOR	SUR.: 0.154	Shielding Angle:

pcc	80%			70%			50%			30%			10%			0
	50%	30%	10%	50%	30%	10%	50%	30%	10%	50%	30%	10%	50%	30%	10%	0
p _w	50%	30%	10%	50%	30%	10%	50%	30%	10%	50%	30%	10%	50%	30%	10%	0
p _{fc}	20%			20%			20%			20%			20%			0
RCR	RCR:Room Cavity Ratio Coefficients of Utilization(CU)															
0.0	1.19	1.19	1.19	1.16	1.16	1.16	1.11	1.11	1.11	1.06	1.06	1.06	1.02	1.02	1.02	1.00
1.0	1.04	.99	.95	1.01	.97	.94	.97	.94	.91	.93	.90	.88	.90	.87	.85	.83
2.0	.90	.83	.77	.88	.82	.76	.85	.79	.75	.81	.77	.73	.78	.75	.71	.69
3.0	.79	.71	.64	.77	.70	.63	.74	.68	.62	.72	.66	.61	.69	.64	.60	.58
4.0	.70	.61	.54	.69	.60	.54	.66	.59	.53	.64	.57	.52	.61	.56	.52	.49
5.0	.62	.53	.47	.61	.53	.46	.59	.52	.46	.57	.50	.45	.55	.49	.45	.43
6.0	.56	.47	.41	.55	.47	.40	.53	.46	.40	.52	.45	.40	.50	.44	.39	.37
7.0	.51	.42	.36	.50	.42	.36	.48	.41	.35	.47	.40	.35	.46	.39	.35	.33
8.0	.46	.38	.32	.46	.37	.32	.44	.37	.32	.43	.36	.31	.42	.36	.31	.29
9.0	.42	.34	.29	.42	.34	.29	.41	.33	.28	.40	.33	.28	.39	.33	.28	.26
10.0	.39	.31	.26	.39	.31	.26	.38	.31	.26	.37	.30	.26	.36	.30	.25	.24



C Range: 0 - 360DEG
 C Interval: 30.0DEG
 Test Speed: HIGH
 Temperature:25.3°C
 Operators:DAMIN
 Test Date:2026-02-04

γ Range: 0 - 90DEG
 γ Interval: 5.0DEG
 Test System:EVERFINE GO-2000B_V1 SYSTEM V2.00.488
 Humidity:65.0%
 Test Distance:6.144m [K=1.0000]
 Remarks:

WEC AND CCEC

Test:U:121.01V I:0.1084A P:12.197W PF:0.9299 Freq:60.00Hz Lamp Flux:575.047x1 lm		
NAME: LS-AL-7TL-12W-5CCT-G	TYPE:	WEIGHT:
SPEC.:	DIM.:	SERIAL No.: 1#30K
MFR.: YOURZOR	SUR.: 0.154	Shielding Angle:

ρ_{CC}	80%			70%			50%			30%			10%			0
ρ_w	50%	30%	10%	50%	30%	10%	50%	30%	10%	50%	30%	10%	50%	30%	10%	0
ρ_{fc}	20%			20%			20%			20%			20%			0
RCR	RCR:Room Cavity Ratio						Wall Exitance Coefficients (WEC)									
0.0																
1.0	.315	.179	.057	.308	.176	.056	.294	.169	.054	.282	.163	.052	.271	.157	.051	
2.0	.295	.162	.050	.289	.159	.049	.277	.154	.048	.266	.149	.047	.256	.145	.046	
3.0	.273	.145	.043	.267	.143	.043	.257	.139	.042	.247	.135	.042	.238	.132	.041	
4.0	.251	.131	.038	.246	.129	.038	.237	.126	.038	.229	.123	.037	.221	.120	.037	
5.0	.232	.118	.034	.228	.117	.034	.219	.114	.034	.212	.112	.033	.205	.109	.033	
6.0	.215	.108	.031	.211	.107	.031	.204	.104	.030	.197	.102	.030	.191	.100	.030	
7.0	.200	.099	.028	.196	.098	.028	.190	.096	.028	.184	.094	.027	.178	.093	.027	
8.0	.187	.091	.026	.184	.090	.026	.178	.089	.025	.172	.087	.025	.167	.086	.025	
9.0	.175	.085	.024	.172	.084	.024	.167	.082	.023	.162	.081	.023	.157	.080	.023	
10.0	.164	.079	.022	.162	.078	.022	.157	.077	.022	.153	.076	.022	.148	.075	.021	

ρ_{CC}	80%			70%			50%			30%			10%			0
ρ_w	50%	30%	10%	50%	30%	10%	50%	30%	10%	50%	30%	10%	50%	30%	10%	0
ρ_{fc}	20%			20%			20%			20%			20%			0
RCR	RCR:Room Cavity Ratio						Ceiling Cavity Exitance Coefficients (CCEC)									
0.0	.190	.190	.190	.163	.163	.163	.111	.111	.111	.064	.064	.064	.020	.020	.020	
1.0	.181	.156	.134	.155	.134	.115	.106	.092	.080	.061	.053	.046	.019	.017	.015	
2.0	.173	.132	.098	.148	.114	.084	.101	.079	.059	.058	.046	.034	.019	.015	.011	
3.0	.165	.114	.074	.141	.099	.064	.097	.069	.045	.056	.040	.027	.018	.013	.009	
4.0	.157	.101	.058	.135	.087	.050	.093	.061	.035	.054	.036	.021	.017	.012	.007	
5.0	.150	.091	.047	.129	.078	.041	.089	.055	.029	.051	.032	.017	.017	.010	.006	
6.0	.143	.082	.039	.123	.071	.034	.085	.050	.024	.049	.029	.014	.016	.010	.005	
7.0	.136	.075	.033	.117	.065	.029	.081	.046	.020	.047	.027	.012	.015	.009	.004	
8.0	.129	.070	.029	.111	.060	.025	.077	.042	.018	.045	.025	.011	.014	.008	.003	
9.0	.123	.065	.025	.106	.056	.022	.074	.039	.016	.043	.023	.009	.014	.008	.003	
10.0	.117	.060	.022	.101	.052	.020	.070	.037	.014	.041	.022	.008	.013	.007	.003	

C Range: 0 - 360DEG
 C Interval: 30.0DEG
 Test Speed: HIGH
 Temperature:25.3°C
 Operators:DAMIN
 Test Date:2026-02-04

γ Range: 0 - 90DEG
 γ Interval: 5.0DEG
 Test System:EVERFINE GO-2000B_V1 SYSTEM V2.00.488
 Humidity:65.0%
 Test Distance:6.144m [K=1.0000]
 Remarks:

UGR(Unified Glare Rating) Table

Test:U:121.01V I:0.1084A P:12.197W PF:0.9299 Freq:60.00Hz										
Lamp Flux:575.047x1 lm										
NAME: LS-AL-7TL-12W-5CCT-G					TYPE:			WEIGHT:		
SPEC.:					DIM.:			SERIAL No.: 1#30K		
MFR.: YOURZOR					SUR.: 0.154			Shielding Angle:		
ceiling/cavity	0.7	0.7	0.5	0.5	0.3	0.7	0.7	0.5	0.5	0.3
walls	0.5	0.3	0.5	0.3	0.3	0.5	0.3	0.5	0.3	0.3
working plane	0.2	0.2	0.2	0.2	0.2	0.2	0.2	0.2	0.2	0.2
Room dimensions	Viewed crosswise					Viewed endwise				
x = 2H y = 2H	22.4	24.0	22.7	24.2	24.4	22.1	23.7	22.4	23.9	24.1
3H	23.9	25.3	24.2	25.6	25.8	23.5	24.9	23.8	25.1	25.4
4H	24.5	25.8	24.8	26.1	26.3	24.0	25.3	24.3	25.6	25.8
6H	24.8	26.1	25.2	26.4	26.6	24.2	25.5	24.6	25.8	26.1
8H	24.9	26.1	25.2	26.4	26.7	24.2	25.4	24.6	25.7	26.0
12H	24.9	26.1	25.2	26.3	26.7	24.2	25.4	24.5	25.7	26.0
4H 2H	23.0	24.3	23.3	24.6	24.8	22.7	24.1	23.0	24.3	24.6
3H	24.6	25.8	24.9	26.1	26.4	24.2	25.4	24.6	25.7	26.0
4H	25.2	26.3	25.6	26.7	27.0	24.8	25.9	25.2	26.2	26.5
6H	25.7	26.7	26.1	27.0	27.4	25.2	26.1	25.6	26.5	26.8
8H	25.7	26.6	26.2	27.0	27.4	25.2	26.1	25.6	26.4	26.8
12H	25.8	26.6	26.2	27.0	27.4	25.1	26.0	25.6	26.4	26.8
8H 4H	25.4	26.3	25.8	26.7	27.1	25.0	25.9	25.4	26.3	26.7
6H	25.9	26.7	26.4	27.1	27.5	25.4	26.2	25.9	26.6	27.0
8H	26.0	26.7	26.5	27.1	27.6	25.5	26.1	25.9	26.5	27.0
12H	26.1	26.7	26.6	27.1	27.6	25.5	26.0	25.9	26.5	27.0
12H 4H	25.4	26.2	25.8	26.6	27.0	25.0	25.8	25.4	26.2	26.6
6H	25.9	26.6	26.4	27.0	27.5	25.4	26.1	25.9	26.5	27.0
8H	26.0	26.6	26.5	27.0	27.5	25.5	26.0	25.9	26.5	27.0
Variations with the observer position at spacings(CIE Pub.117):										
S = 1.0H	+ 0.1 / - 0.1					+ 0.1 / - 0.2				
1.5H	+ 0.1 / - 0.3					+ 0.2 / - 0.3				
2.0H	+ 0.3 / - 0.3					+ 0.3 / - 0.4				

CIE Pub.117, 575.0 lm Total Lamp Luminous Flux Correct (8log(F/F0) = -1.9)
 Area: 0.0187 m2

C Range: 0 - 360DEG
 C Interval: 30.0DEG
 Test Speed: HIGH
 Temperature:25.3°C
 Operators:DAMIN
 Test Date:2026-02-04

γ Range: 0 - 90DEG
 γ Interval: 5.0DEG
 Test System:EVERFINE GO-2000B_V1 SYSTEM V2.00.488
 Humidity:65.0%
 Test Distance:6.144m [K=1.0000]
 Remarks:

UTILIZATION FACTORS TABLE

Test:U:121.01V I:0.1084A P:12.197W PF:0.9299 Freq:60.00Hz Lamp Flux:575.047x1 lm		
NAME: LS-AL-7TL-12W-5CCT-G	TYPE:	WEIGHT:
SPEC.:	DIM.:	SERIAL No.: 1#30K
MFR.: YOURZOR	SUR.: 0.154	Shielding Angle:

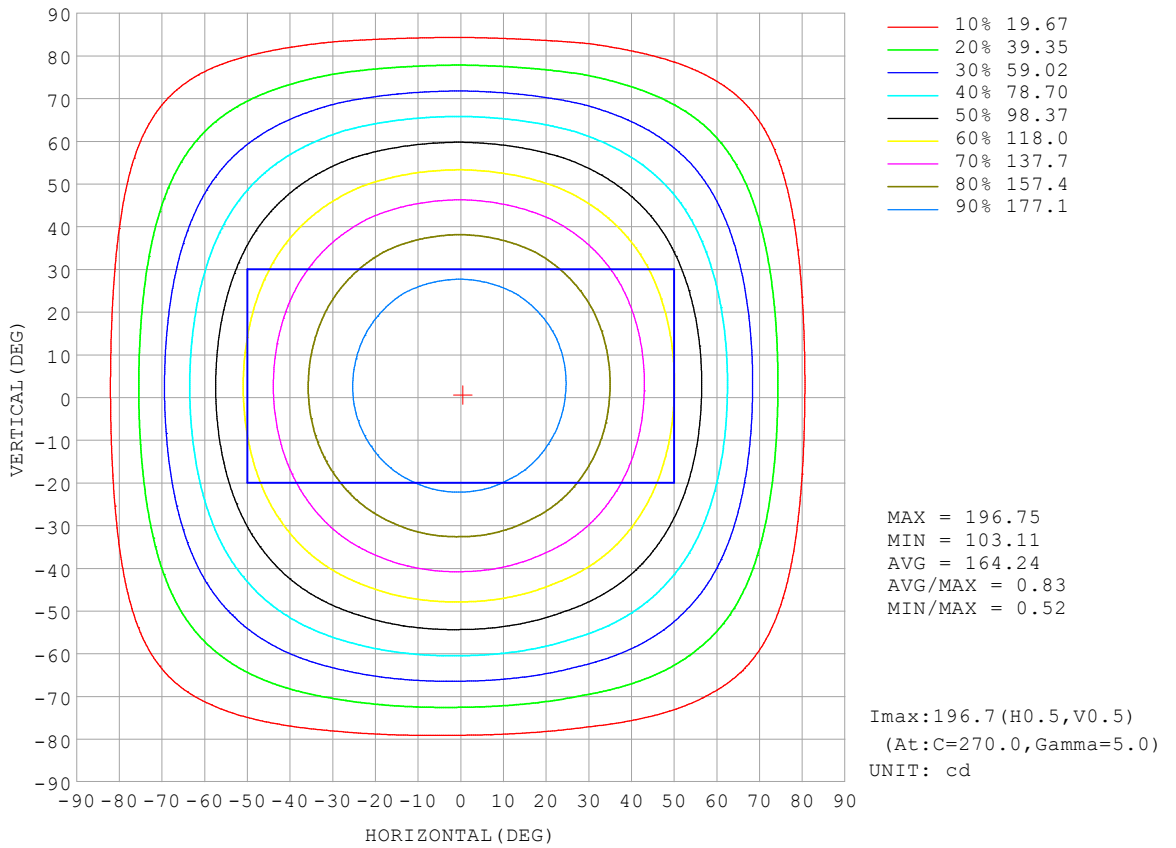
REFLECTANCE										
Ceiling	0.8	0.8	0.8	0.7	0.7	0.7	0.5	0.5	0.5	0
Walls	0.7	0.5	0.3	0.7	0.5	0.3	0.7	0.5	0.3	0
Working plane	0.2	0.2	0.2	0.2	0.2	0.2	0.2	0.2	0.2	0
ROOM INDEX	UTILIZATION FACTORS (PERCENT) $k(RI) \times RCR = 5$									
k = 0.60	57	45	38	56	45	38	55	45	38	32
0.80	67	55	48	66	55	48	64	54	47	40
1.00	76	64	57	74	64	57	72	65	56	49
1.25	83	72	65	81	71	64	79	70	64	56
1.50	88	78	71	86	77	70	83	75	69	61
2.00	95	86	79	93	85	79	89	83	77	69
2.50	99	91	85	97	89	84	93	87	82	73
3.00	102	95	89	100	93	88	96	90	86	78
4.00	106	100	95	104	98	94	99	95	91	82
5.00	108	104	99	106	102	98	101	98	95	86
ROOM INDEX	UF(total)									Direct
According to DIN EN 13032-2 2004			Suspended				SHRNOM = 1.25			

C Range: 0 - 360DEG
 C Interval: 30.0DEG
 Test Speed: HIGH
 Temperature:25.3°C
 Operators:DAMIN
 Test Date:2026-02-04

γ Range: 0 - 90DEG
 γ Interval: 5.0DEG
 Test System:EVERFINE GO-2000B_V1 SYSTEM V2.00.488
 Humidity:65.0%
 Test Distance:6.144m [K=1.0000]
 Remarks:

ISOCANDELA DIAGRAM

Test:U:121.01V I:0.1084A P:12.197W PF:0.9299 Freq:60.00Hz Lamp Flux:575.047x1 lm		
NAME: LS-AL-7TL-12W-5CCT-G	TYPE:	WEIGHT:
SPEC.:	DIM.:	SERIAL No.: 1#30K
MFR.: YOURZOR	SUR.: 0.154	Shielding Angle:

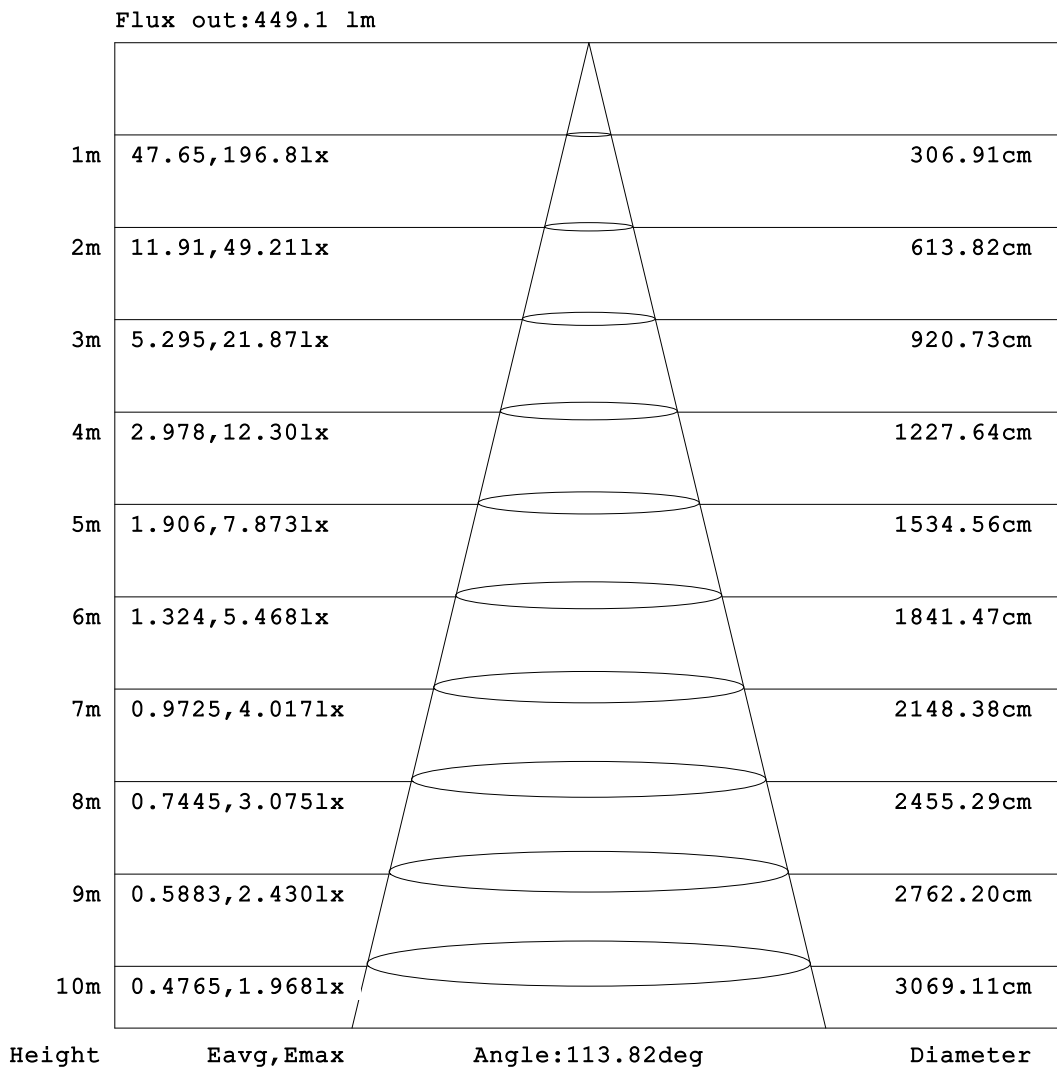


C Range: 0 - 360DEG
 C Interval: 30.0DEG
 Test Speed: HIGH
 Temperature:25.3°C
 Operators:DAMIN
 Test Date:2026-02-04

γ Range: 0 - 90DEG
 γ Interval: 5.0DEG
 Test System:EVERFINE GO-2000B_V1 SYSTEM V2.00.488
 Humidity:65.0%
 Test Distance:6.144m [K=1.0000]
 Remarks:

AAI Figure

Test:U:121.01V I:0.1084A P:12.197W PF:0.9299 Freq:60.00Hz Lamp Flux:575.047x1 lm		
NAME: LS-AL-7TL-12W-5CCT-G	TYPE:	WEIGHT:
SPEC.:	DIM.:	SERIAL No.: 1#30K
MFR.: YOURZOR	SUR.: 0.154	Shielding Angle:



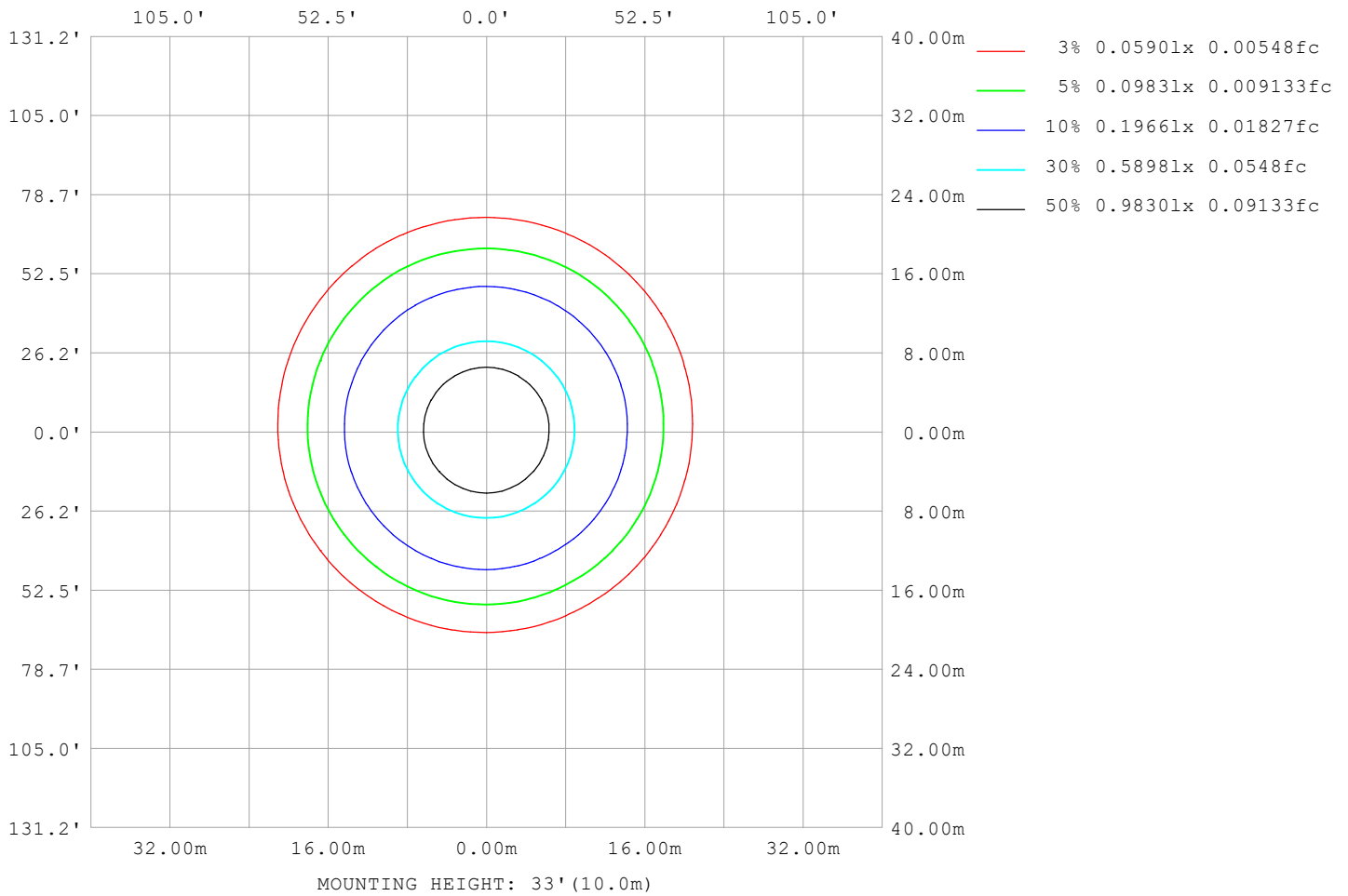
Note:The Curves indicate the illuminated area and the average illumination when the luminaire is at different distance.

C Range: 0 - 360DEG
C Interval: 30.0DEG
Test Speed: HIGH
Temperature:25.3°C
Operators:DAMIN
Test Date:2026-02-04

γ Range: 0 - 90DEG
γ Interval: 5.0DEG
Test System:EVERFINE GO-2000B_V1 SYSTEM V2.00.488
Humidity:65.0%
Test Distance:6.144m [K=1.0000]
Remarks:

ISOLUX DIAGRAM

Test:U:121.01V I:0.1084A P:12.197W PF:0.9299 Freq:60.00Hz Lamp Flux:575.047x1 lm		
NAME: LS-AL-7TL-12W-5CCT-G	TYPE:	WEIGHT:
SPEC.:	DIM.:	SERIAL No.: 1#30K
MFR.: YOURZOR	SUR.: 0.154	Shielding Angle:



C Range: 0 - 360DEG
C Interval: 30.0DEG
Test Speed: HIGH
Temperature:25.3°C
Operators:DAMIN
Test Date:2026-02-04

γ Range: 0 - 90DEG
γ Interval: 5.0DEG
Test System:EVERFINE GO-2000B_V1 SYSTEM V2.00.488
Humidity:65.0%
Test Distance:6.144m [K=1.0000]
Remarks:

LED Avg.L Report

Test:U:121.01V I:0.1084A P:12.197W PF:0.9299 Freq:60.00Hz Lamp Flux:575.047x1 lm		
NAME: LS-AL-7TL-12W-5CCT-G	TYPE:	WEIGHT:
SPEC.:	DIM.:	SERIAL No.: 1#30K
MFR.: YOURZOR	SUR.: 0.154	Shielding Angle:

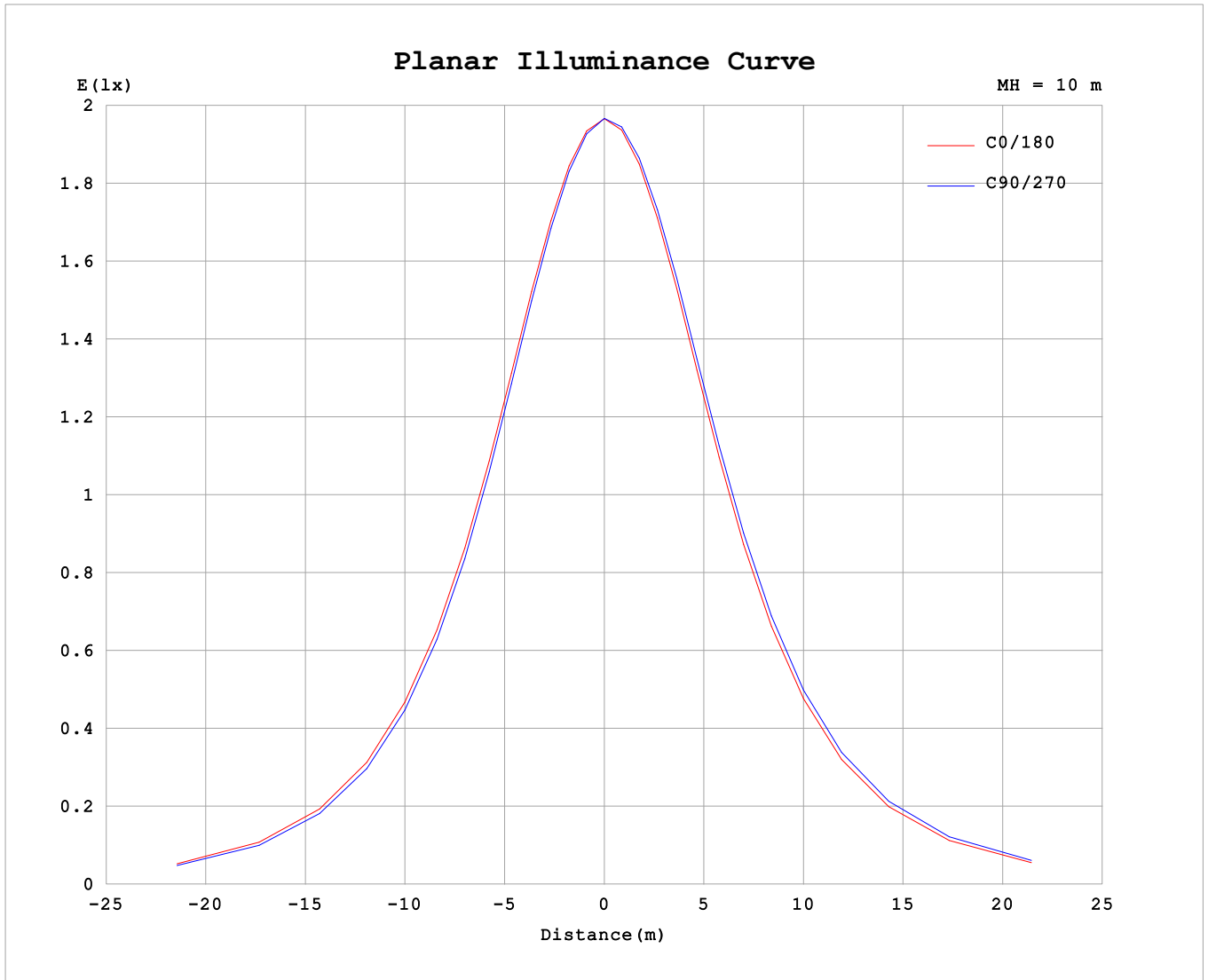
AvgL	cd/m2
L_0~180 (65) av	9109
L_0~180 (75) av	8022
L_0~180 (85) av	5804
L_90~270 (65) av	9181
L_90~270 (75) av	8272
L_90~270 (85) av	6733
L_45 (65) av	9152
L_45 (75) av	8159
L_45 (85) av	6244

Standard: GB/T 29293-2012

C Range: 0 - 360DEG
 C Interval: 30.0DEG
 Test Speed: HIGH
 Temperature:25.3℃
 Operators:DAMIN
 Test Date:2026-02-04

γ Range: 0 - 90DEG
 γ Interval: 5.0DEG
 Test System:EVERFINE GO-2000B_V1 SYSTEM V2.00.488
 Humidity:65.0%
 Test Distance:6.144m [K=1.0000]
 Remarks:

Planar Illuminance Curve



C Range: 0 - 360DEG
 C Interval: 30.0DEG
 Test Speed: HIGH
 Temperature: 25.3°C
 Operators: DAMIN
 Test Date: 2026-02-04

γ Range: 0 - 90DEG
 γ Interval: 5.0DEG
 Test System: EVERFINE GO-2000B_V1 SYSTEM V2.00.488
 Humidity: 65.0%
 Test Distance: 6.144m [K=1.0000]
 Remarks:

